



320N

NGP-TPV Automatic Door Bottom for Hollow Metal Doors

PRODUCT CUT SHEET

PROJECT:
SUBMITTED BY:
DATE:
NOTES:

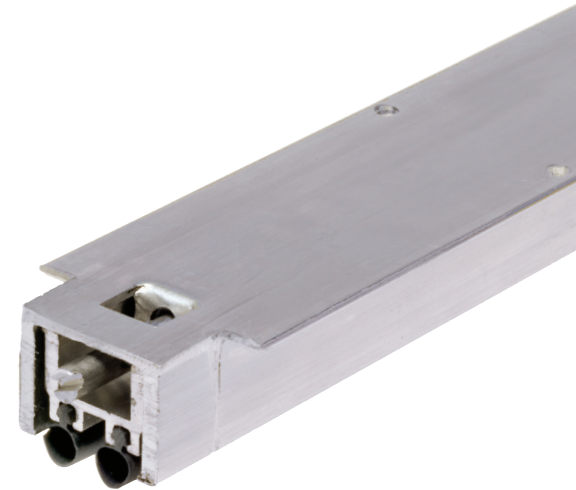
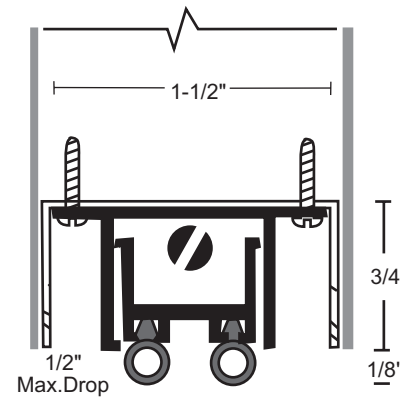
Material

Aluminum Alloy 6063, T5 Temper
Thermo-Plastic Vulcanizate (TPV)
NGP-TPV is Black

- ▶ Very Good Abrasion Resistance, Tensile Strength and Memory
- ▶ Flame Resistant
- ▶ Moisture Resistant
- ▶ Temperature Range -80°F to 275°F
- ▶ Good Resistance to Ozone, Sunlight and Aging
- ▶ Fits in 1⁵/₈" x 3/4" Channel. A "Furring Strip" May Be Used to Lower Automatic Door Bottom When a Deeper Channel is Used
- ▶ Furnished 1/2" Shorter Than Ordered to Fit Within Net Door Size. (i.e. 36" is Furnished 35 1/2") Length May Be Field Cut Up To 4"
- ▶ Fire Ratings Apply to Metal Doors Only
- ▶ #4 x 5/8" SMS Furnished
- ▶ End Caps Not Available
- ▶ Available 24" to 48" in Length
- ▶ 1/2" Max Drop

Finish

Mill Aluminum



NGP-GKT-320N-PCS-1220-A