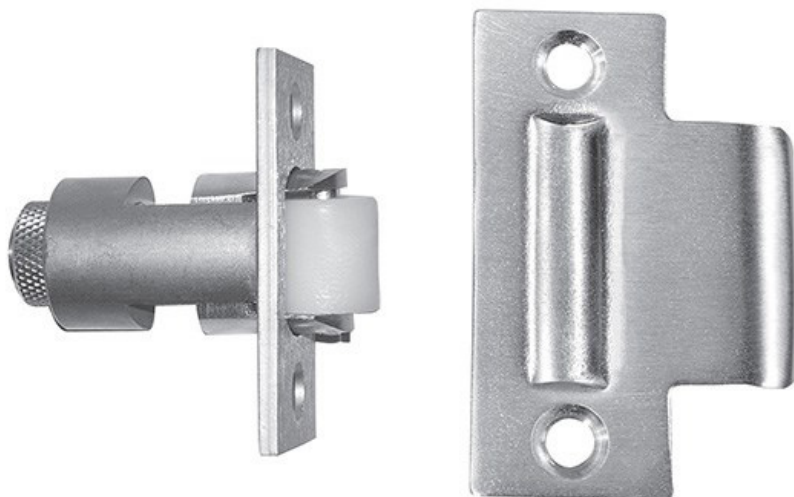


The global leader in  
door opening solutions

### Rockwood 594 - Roller Latch



#### Available Finishes:

- US3/605
- US4/606
- US10/612
- US10B/613
- US10BE/613E
- US26/625
- US26D/626

#### SIZE:

Strike: 1 1/8" x 2 3/4"

Latch Face: 1 1/8" x 2 1/4"

#### WEIGHT:

0.7 lbs.

### Specifications:

#### MATERIAL:

Cast Brass

#### FASTENERS:

Body: 2 ea. #8 x 3/4" Flat Head Combo Screws

Strike: 2 ea. #8 x 3/4" Flat Head Combo Screws

#### FEATURES:

- Solid nylon roller for durable silent operation
- Simple adjustment for roller projection