

ASSA ABLOY

The global leader in
door opening solutions

Electronic Security Hardware

HES | Securitron Product Pricelist

U.S. & Canada effective February 1, 2019



Table of Contents

Electric Strikes

| | |
|---|----|
| HES 1006 | 2 |
| HES 1500 | 4 |
| HES 1600 | 5 |
| HES 4500C | 7 |
| HES 5000, 5200 | 8 |
| HES 7000 | 9 |
| HES 7501 | 10 |
| HES 8000, 8300 | 10 |
| HES 8500 | 11 |
| Securiton UNL, MUNL | 11 |
| HES 9400, 9500, 9600, 9700, 9800 | 12 |
| HES Folger Adam SB:310-1(X), 310-2 | 13 |
| HES Folger Adam 310-2 3/4, 310-2 3/4 OB | 14 |
| HES Folger Adam 310-3-1 | 15 |
| HES Folger Adam 310-4, 310-4 (S) | 16 |
| HES Folger Adam 310-4-X | 17 |
| HES Folger Adam 310-6-X | 19 |
| HES Folger Adam 310-1-X | 22 |
| HES Folger Adam 712, 712-75 | 23 |
| HES Folger Adam 732, 732-75 | 24 |
| HES Folger Adam SB710, SB710-75 | 25 |
| HES Folger Adam SB730, SB730-75 | 26 |
| HES Folger Adam 742-75 | 27 |
| HES Folger Adam SB740-75 | 28 |
| HES Electric Strike Accessories | 29 |

Electromagnetic Locks

| | |
|---|----|
| Intelligent Magnalocks® | |
| Securiton M370, M380 | 30 |
| Securiton M680E EcoMag | 30 |
| Delayed Egress Magnalocks® | |
| Securiton iMXDa | 31 |
| Durable Magnalocks® | |
| Securiton M32 | 32 |
| Securiton M62 | 32 |
| Securiton M82 | 32 |
| Securiton M32, M62, M82 Brackets | 33 |
| Securiton M32, M62, M82 Accessories | 33 |
| Securiton M38 | 35 |
| Securiton M68 | 35 |
| Securiton Universal Magnalock Accessories | 36 |
| Securiton DM62 | 37 |
| Shear Aligning Magnalocks® | |
| Securiton SAM, SAM2, M34R | 37 |

Cabinet Locks

| | |
|---------------------------------------|----|
| HES 610 | 38 |
| HES 660 | 38 |
| HES K20 | 38 |
| HES KP20 | 38 |
| HES K100-622H Aperio Cabinet Lock | 39 |
| HES K200 Wiegand Cabinet Lock | 39 |
| HES KS200 Wiegand Server Cabinet Lock | 39 |
| Securiton MCL | 40 |
| Securiton M32-SS | 40 |

Specialty Locks

| | |
|----------------------|----|
| Securiton GL1 | 40 |
| Securiton MM15 | 41 |
| Securiton M62FG-SASM | 41 |

Keypads & Card Readers

| | |
|----------------------------|----|
| Stand Alone Keypads | |
| Securiton DK-12 | 42 |
| Keypad Systems | |
| Securiton DK-16 | 42 |
| Securiton DK-26 | 42 |
| Wiegand Keypads | |
| Securiton DK-37 | 42 |
| Securiton DK-38 | 43 |
| Aperio Card Reader | |
| Securiton R100-1H | 43 |

Push Buttons & Egress Devices

| | |
|-----------------------------------|----|
| Securiton XMS Exit Motion Sensor | 44 |
| Emergency Exit Buttons | |
| Securiton EEB | 44 |
| Push Buttons | |
| Securiton PB | 44 |
| Securiton PB2 | 45 |
| Securiton PB3 | 45 |
| Securiton PB4L | 46 |
| Securiton PB5 | 46 |
| Securiton MK Mortise Key Switch | 47 |
| Securiton KP-1 Tubular Key Switch | 47 |
| Securiton WSS Wave Switch | 48 |
| Securiton SP-1 Capacitive Button | 48 |
| Egress Bars | |
| Securiton DSB | 48 |
| Securiton TSB | 49 |
| Securiton EMB | 49 |
| Egress Handles | |
| Securiton TSH | 50 |
| Securiton EMH | 50 |

Power

| | |
|--|----|
| Securiton BPS Linear Power Supplies | 51 |
| Securiton AQ Series Power Supplies | 52 |
| Securiton AQ Series Distribution Boards | 52 |
| Securiton AQ Series Power Supply Boards Only | 52 |
| Securiton AQ Series Step by Step Configuration | 53 |
| Securiton EcoPower® | 53 |
| Securiton BPS Solar Power Supplies | 54 |
| Securiton AQE Single-Port PoE | 54 |
| Securiton AQE Multi-Port PoE | 54 |
| Securiton PSP Plug-In Power Supplies | 55 |
| Other Power Products | 55 |

Power Transfers

| | |
|--|----|
| Securiton ICPT Inductive Coupling Power Transfer | 55 |
| Securiton CEPT Concealed Electrical Power Transfers | 55 |
| Securiton SEPT Square-Cut Electrical Power Transfers | 56 |
| Securiton EPT Electrical Power Transfers | 56 |
| Securiton EH Electric Hinges | 56 |
| Securiton TSB Door Cords | 57 |

Accessories

| | |
|--|----|
| Securiton TM-2, TM-9, DT-7 & PZ1 Timers & Alarms | 57 |
| Securiton BA-DPA Door Prop Alarm Monitoring | 57 |
| Securiton DPS Door Position Switches | 57 |
| Securiton MSS Magnetic Switch/High Security | 58 |
| Securiton LM Latch Monitoring | 58 |
| Securiton RLP, RB-4 Relay Logic Packs & Boards | 58 |

Terms & Conditions | Warranty

| | |
|--------------------------------|----|
| Terms & Conditions, Warranties | 59 |
|--------------------------------|----|

Electric Strikes

HES 1006



Complete Pacs for Latchbolt Locks

| MODELS & FINISHES | 630 |
|-----------------------------------|-------|
| 1006CLB | \$587 |
| 1006CLB-F (Fail Safe) | \$587 |
| 1006CLB-LBM | \$697 |
| 1006CLB-F-LBM (Fail Safe) | \$697 |
| 1006CLB-LBSM | \$707 |
| 1006CLB-F-LBSM (Fail Safe) | \$707 |

Complete Pacs for Locks with Deadbolts

| MODELS & FINISHES | 630 |
|--------------------------------|-------|
| 1006CDB | \$610 |
| 1006CDB-F (Fail Safe) | \$610 |
| 1006CAS | \$610 |
| 1006CAS-F (Fail Safe) | \$610 |
| 1006CAS-2 | \$635 |
| 1006CAS-2-F (Fail Safe) | \$635 |

Complete Pacs for Latchbolt Locks & Deadbolts

| MODELS & FINISHES | 630 |
|-----------------------------|-------|
| 1006CS | \$659 |
| 1006CS-F (Fail Safe) | \$659 |

Electric Strike Bodies

| MODELS & FINISHES | 630 | BLK | 605 | 606 | 612 | 613 | 629 |
|--------------------------------|-------|-------|-------|-------|-------|-------|-------|
| 1006 | \$552 | \$572 | \$638 | \$625 | \$625 | \$598 | \$638 |
| 1006-F (Fail Safe) | \$552 | \$572 | \$638 | \$625 | \$625 | \$598 | \$638 |
| 1006-LBM | \$662 | \$682 | \$748 | \$735 | \$735 | \$708 | \$748 |
| 1006-F-LBM (Fail Safe) | \$662 | \$682 | \$748 | \$735 | \$735 | \$708 | \$748 |
| 1006-LBSM | \$672 | \$692 | \$758 | \$745 | \$745 | \$718 | \$758 |
| 1006-F-LBSM (Fail Safe) | \$672 | \$692 | \$758 | \$745 | \$745 | \$718 | \$758 |

HES 1006 continued on next page.

HES 1006 Cont.

Faceplates

| OPTIONS | DESCRIPTION | 630 | BLK | 605 | 606 | 612 | 613 | 629 |
|-------------|---|------|------|-------|------|------|------|------|
| LB | Kit includes J, KM and KD faceplates | \$35 | — | — | — | — | — | — |
| DB | Kit includes faceplates and brackets to make N and H series options | \$58 | — | — | — | — | — | — |
| E | | \$52 | \$72 | \$102 | \$90 | \$90 | \$72 | \$90 |
| R | | \$52 | \$72 | \$102 | \$90 | \$90 | \$72 | \$90 |
| Z | | \$35 | \$55 | \$101 | \$89 | \$89 | \$55 | \$89 |
| J-2 | | \$68 | \$88 | \$112 | \$98 | \$98 | \$88 | \$98 |
| KM-2 | | \$68 | \$88 | \$112 | \$98 | \$98 | \$88 | \$98 |
| DB-2 | Kit includes faceplates and brackets to make N-2 and H-2 series options | \$83 | — | — | — | — | — | — |

Tier Two Faceplates

| OPTIONS | 630 | BLK | 605 | 606 | 612 | 613 | 629 |
|----------------|------|------|-------|------|------|------|------|
| J | \$34 | \$54 | \$100 | \$90 | \$90 | \$54 | \$90 |
| KD, KM | \$34 | \$54 | \$100 | \$90 | \$90 | \$54 | \$90 |
| ND, NM | \$52 | \$72 | \$101 | \$89 | \$89 | \$72 | \$89 |
| HM, HTD | \$52 | \$72 | \$101 | \$89 | \$89 | \$72 | \$89 |

Accessories

| MODEL | DESCRIPTION | PRICE |
|-----------------|----------------------------------|-------|
| 157 | Torx screws | \$13 |
| 1000-102 | Rain guard | \$33 |
| 1006-103 | Full keeper shims | \$11 |
| 1000-104 | Lip extension trim adapter (BLK) | \$61 |
| 1006-105 | Trim enhancer (BLK) | \$31 |
| 1006-109 | Trim adapter (BLK) | \$43 |
| 1000-110 | Replacement strike plate | \$100 |
| 1000-130 | KD filler plate | \$45 |

How to Order Specify quantity and the following information. Order related products separately.

| SERIES | MODEL | FAIL SAFE/ SECURE | FINISH* | OPTION(S) |
|---|--|---------------------------------------|-------------------------|--------------------------------------|
| 1006 | — | - F | - 630 | - LBM |
| 1006 Universal Electric Strike Faceplates ordered separately | CS Complete Electric Strike; includes the HES SMART Pac® III and J, KD, KM, HM, and AD faceplates | F Fail Safe/Secure | 605 Bright Brass | LBM Latchbolt Monitor |
| | | | 606 Satin Brass | |
| | CLB Complete Electric Strike for latchbolt locks; includes the J, K, KD, and KM faceplates | (blank) Fail Secure (standard) | 612 Satin Bronze | LBSM Latchbolt Strike Monitor |
| | | | 613 Bronze Toned | |
| CDB Complete Electric Strike for Deadbolt Locks; includes the HM and AD faceplates | 629 Bright Stainless Steel | | | |
| CAS Complete Electric Strike for Deadbolt Locks; includes the ND and NM faceplates | | 630 Satin Stainless Steel | | |
| | | BLK Black | | |

*Complete Pacs are only available in the 630 finish.

HES 1500



Complete Pacs for Latchbolt Locks

| MODELS & FINISHES | DESCRIPTION | 630 | BSP | 613E | 605 | 606 | 612 | 629 |
|-------------------|-------------------------------------|-------|-------|-------|-------|-------|-------|-------|
| 1500C | | \$535 | \$592 | \$592 | \$635 | \$620 | \$620 | \$625 |
| 1500C-LM | Lock monitor | \$640 | \$697 | \$697 | \$740 | \$725 | \$725 | \$730 |
| 1500C-DLM | Dual lock monitors | \$745 | \$802 | \$802 | \$845 | \$830 | \$830 | \$835 |
| 1500C-LMS | Lock monitor & strike monitor | \$650 | \$707 | \$707 | \$750 | \$735 | \$735 | \$740 |
| 1500C-DLMS | Dual lock monitors & strike monitor | \$755 | \$812 | \$812 | \$855 | \$840 | \$840 | \$845 |

Complete electric strike kit includes faceplates that accommodate 1J, 1K, 1KD or 1KM options.

Electric Strike Bodies

| MODELS & FINISHES | DESCRIPTION | 630 | BSP | 613E | 605 | 606 | 612 | 629 |
|-------------------|-------------------------------------|-------|-------|-------|-------|-------|-------|-------|
| 1500 | | \$494 | \$526 | \$526 | \$570 | \$560 | \$560 | \$570 |
| 1500-LM | Lock monitor | \$599 | \$631 | \$631 | \$675 | \$665 | \$665 | \$675 |
| 1500-DLM | Dual lock monitors | \$704 | \$736 | \$736 | \$780 | \$770 | \$770 | \$780 |
| 1500-LMS | Lock monitor & strike monitor | \$609 | \$641 | \$641 | \$685 | \$675 | \$675 | \$685 |
| 1500-DLMS | Dual lock monitors & strike monitor | \$714 | \$746 | \$746 | \$790 | \$780 | \$780 | \$790 |

Faceplates

| OPTIONS | DESCRIPTION | 630 | BSP | 613E | 605 | 606 | 612 | 629 |
|--------------|---|------|------|------|-------|-------|-------|-------|
| 1LB | Kit includes 1J, 1K, 1KD and 1KM faceplates | \$41 | \$66 | \$66 | \$87 | \$81 | \$81 | \$81 |
| 1LB-2 | Kit includes 1J-2 & 1KM-2 faceplates | \$68 | \$93 | \$93 | \$114 | \$108 | \$108 | \$108 |

Accessories

| MODELS | DESCRIPTION | 630 | BSP | 613E | 605 | 606 | 612 | 629 |
|---------------------|--|-------|------|------|------|------|------|------|
| 157 | Torx Screws | \$13 | — | — | — | — | — | — |
| 1500-104-XXX | Lip extension trim adapter (finish to match) | \$38 | \$61 | \$61 | \$82 | \$76 | \$76 | \$76 |
| 1500-106-XXX | 4500 filler plates and trim enhancer kit (finish to match) | \$31 | \$54 | \$54 | \$75 | \$69 | \$69 | \$69 |
| OPT-1SRK | Optional spring replacement kit | \$46 | — | — | — | — | — | — |
| OPT-1LM | Optional kit includes single lock monitor | \$105 | — | — | — | — | — | — |
| OPT-1DLM | Optional kit includes dual lock monitors | \$210 | — | — | — | — | — | — |
| MOD-1SOL | Solenoid replacement module | \$286 | — | — | — | — | — | — |

How to Order

Specify quantity and the following information. Order related products separately.

| SERIES | MODEL | FINISH | OPTION(S)* |
|---|---|---|---|
| 1500 | — | — 630 | — LM |
| 1500 Universal Electric Strike faceplate option kits ordered separately | C Complete Electric Strike; includes 1LB faceplate kit for latchbolts | 605 Bright Brass | LM Lock Monitor |
| | | 606 Satin Brass | DLM Dual Lock Monitor |
| | | 612 Satin Bronze | LMS Lock Monitor and Strike Monitor |
| | | 613E Dark Oxidized Satin Bronze Powder | DLMS Dual Lock Monitors and Strike Monitor |
| | | 629 Bright Stainless Steel | OPT-1LM Single Lock Monitor |
| | | 630 Satin Stainless Steel | OPT-1DLM Dual Lock Monitors |
| | | BSP Black Suede Powder | |

*LMS/DLMS factory installed only option.

HES 1600



Complete Pacs for Latchbolt Locks

| MODELS & FINISHES | DESCRIPTION | 630 | BSP | 613E | 605 | 606 | 612 | 629 |
|----------------------|-------------------------------------|-------|-------|-------|-------|-------|-------|-------|
| 1600-CLB | | \$535 | \$592 | \$592 | \$635 | \$620 | \$620 | \$625 |
| 1600-CLB-LM | Lock monitor | \$640 | \$697 | \$697 | \$740 | \$725 | \$725 | \$730 |
| 1600-CLB-DLM | Dual lock monitors | \$745 | \$802 | \$802 | \$845 | \$830 | \$830 | \$835 |
| 1600-CLB-LMS | Lock monitor & strike monitor | \$650 | \$707 | \$707 | \$750 | \$735 | \$735 | \$740 |
| 1600-CLB-DLMS | Dual lock monitors & strike monitor | \$755 | \$812 | \$812 | \$855 | \$840 | \$840 | \$845 |

Electric strike complete with LB option includes faceplates that accommodate 1J, 1K, 1KD or 1KM options.

Complete Pacs for Locks with Deadbolts

| MODELS & FINISHES | DESCRIPTION | 630 | BSP | 613E | 605 | 606 | 612 | 629 |
|----------------------|-------------------------------------|-------|-------|-------|-------|-------|-------|-------|
| 1600-CDB | | \$535 | \$592 | \$592 | \$635 | \$620 | \$620 | \$625 |
| 1600-CDB-LM | Lock monitor | \$640 | \$697 | \$697 | \$740 | \$725 | \$725 | \$730 |
| 1600-CDB-DLM | Lock monitor & strike monitor | \$745 | \$802 | \$802 | \$845 | \$830 | \$830 | \$835 |
| 1600-CDB-LMS | Lock monitor & strike monitor | \$650 | \$707 | \$707 | \$750 | \$735 | \$735 | \$740 |
| 1600-CDB-DLMS | Dual lock monitors & strike monitor | \$755 | \$812 | \$812 | \$855 | \$840 | \$840 | \$845 |

Electric strike complete with DB option includes faceplates that accommodate 1N, 1ND, 1NM OR 1NTD options.

Complete Pacs for Latchbolt Locks & Deadbolts

| MODELS & FINISHES | DESCRIPTION | 630 | BSP | 613E | 605 | 606 | 612 | 629 |
|---------------------|-------------------------------------|-------|-------|-------|-------|-------|-------|-------|
| 1600-CS | | \$592 | \$640 | \$640 | \$748 | \$775 | \$775 | \$758 |
| 1600-CS-LM | Lock monitor | \$697 | \$745 | \$745 | \$858 | \$880 | \$880 | \$868 |
| 1600-CS-DLM | Dual lock monitors | \$802 | \$850 | \$850 | \$968 | \$985 | \$985 | \$978 |
| 1600-CS-LMS | Lock monitor & strike monitor | \$707 | \$755 | \$755 | \$868 | \$890 | \$890 | \$878 |
| 1600-CS-DLMS | Dual lock monitors & strike monitor | \$812 | \$860 | \$860 | \$978 | \$995 | \$995 | \$988 |

Electric strike complete with options to accommodate most latchbolts and deadbolts; includes faceplates and bracket to accommodate 1J, 1K, 1KD, 1KM, 1N, 1ND, 1NM or 1NTD options.

Electric Strike Bodies

| MODELS & FINISHES | DESCRIPTION | 630 | BSP | 613E | 605 | 606 | 612 | 629 |
|-------------------|-------------------------------------|-------|-------|-------|-------|-------|-------|-------|
| 1600 | | \$494 | \$526 | \$526 | \$570 | \$560 | \$560 | \$570 |
| 1600-LM | Lock monitor | \$599 | \$631 | \$631 | \$675 | \$665 | \$665 | \$675 |
| 1600-DLM | Dual lock monitors | \$704 | \$736 | \$736 | \$780 | \$770 | \$770 | \$780 |
| 1600-LMS | Lock monitor & strike monitor | \$609 | \$641 | \$641 | \$685 | \$675 | \$675 | \$685 |
| 1600-DLMS | Dual lock monitors & strike monitor | \$714 | \$746 | \$746 | \$790 | \$780 | \$780 | \$790 |

Faceplates

| OPTIONS | DESCRIPTION | 630 | BSP | 613E | 605 | 606 | 612 | 629 |
|--------------|---|------|------|------|-------|-------|-------|-------|
| 1LB | Kit includes 1J, 1K, 1KD and 1KM faceplates | \$41 | \$66 | \$66 | \$87 | \$81 | \$81 | \$81 |
| 1LB-2 | Kit includes 1J-2 and 1KM-2 faceplates | \$68 | \$93 | \$93 | \$114 | \$108 | \$108 | \$108 |
| 1DB | Kit includes faceplates and brackets to make 1N, 1ND, 1NM or 1NTD options | \$41 | \$66 | \$66 | \$87 | \$81 | \$81 | \$81 |
| 1DB-2 | Kit includes faceplates and brackets to make 1N-2 option | \$68 | \$93 | \$93 | \$114 | \$108 | \$108 | \$108 |

HES 1600 continued on next page.

HES 1600

Cont.

Accessories

| MODELS | DESCRIPTION | 630 | BSP | 613E | 605 | 606 | 612 | 629 |
|--------------|---|-------|------|------|------|------|------|------|
| 157 | Torx Screws | \$13 | — | — | — | — | — | — |
| 1600-104-XXX | Lip extension trim adapter (finish to match) | \$38 | \$61 | \$61 | \$82 | \$76 | \$76 | \$76 |
| 1600-106-XXX | 1006 filler plate and trim enhancer kit (finish to match) | \$31 | \$54 | \$54 | \$75 | \$69 | \$69 | \$69 |
| OPT-1SRK | Optional spring replacement kit | \$46 | — | — | — | — | — | — |
| OPT-1LM | Optional kit includes single lock monitor | \$105 | — | — | — | — | — | — |
| OPT-1DLM | Optional kit includes dual lock monitors | \$210 | — | — | — | — | — | — |
| MOD-1SOL | Solenoid replacement module | \$286 | — | — | — | — | — | — |

How to Order *Specify quantity and the following information. Order related products separately.*

| SERIES | MODEL | FINISH | OPTION(S)* |
|--|--|--|--|
| 1600 | – CS | – 630 | – LM |
| 1600 Universal Electric Strike; Faceplate option kits ordered separately | CS Complete Electric Strike; includes 1LB faceplate kit for latchbolts and 1DB faceplate kit for deadbolts | 605 Bright Brass | LM Lock Monitor |
| | | 606 Satin Brass | |
| | CLB Complete Electric Strike for Latchbolt Locks; includes 1LB faceplate kit for latchbolts | 612 Satin Bronze | DLM Dual Lock Monitor |
| | | 613E Dark Oxidized Satin Bronze Powder | |
| | CDB Complete Electric Strike for Deadbolt Locks; includes 1DB faceplate kit for deadbolts | 629 Bright Stainless Steel | LMS Lock Monitor and Strike Monitor |
| | | 630 Satin Stainless Steel | DLMS Dual Lock Monitors and Strike Monitor |
| | BSP Black Suede Powder | OPT-1LM Single Lock Monitor | |
| | | | OPT-1DLM Dual Lock Monitors |

*LMS/DLMS factory installed only option.

HES 4500C



Complete Pacs for Latchbolt Locks

| MODELS & FINISHES | DESCRIPTION | 630 | 605 | 606 | 612 | 613 | 629 |
|-------------------|--------------------------|-------|-------|-------|-------|-------|-------|
| 4500C | | \$597 | \$683 | \$670 | \$670 | \$638 | \$683 |
| 4500C-LBM | Latchbolt monitor | \$707 | \$793 | \$780 | \$780 | \$748 | \$793 |
| 4500C-LBSM | Latchbolt strike monitor | \$717 | \$803 | \$790 | \$790 | \$758 | \$803 |

Accessories

| MODEL | DESCRIPTION | PRICE |
|-----------------|------------------------------|-------|
| 157 | Torx screws | \$13 |
| 4500-105 | Trim enhancer (BLK) | \$31 |
| 4500-110 | Replacement strike plate | \$95 |
| 4500-131 | Filler block | \$40 |
| 4501-1/2 | 1/2" stackable lip extension | \$53 |
| 4501-1 | 1" stackable lip extension | \$60 |

How to Order Specify quantity and the following information. Order related products separately.

| SERIES | FINISH | OPTION(S) |
|--|-----------------------------------|--------------------------------------|
| 4500C | - 630 | - LBM |
| 4500C Complete Electric Strike; includes faceplates for cylindrical and mortise locks | 605 Bright Brass | LBM Latchbolt Monitor |
| | 606 Satin Brass | LBSM Latchbolt Strike Monitor |
| | 612 Satin Bronze | |
| | 613 Bronze Toned | |
| | 629 Bright Stainless Steel | |
| | 630 Satin Stainless Steel | |

HES 5000, 5200



Complete Pacs for Latchbolt Locks

| MODELS & FINISHES | DESCRIPTION | 630 |
|-------------------|--------------------------|-------|
| 5000C | | \$199 |
| 5000C-LBM | Latchbolt monitor | \$274 |
| 5200C | | \$204 |
| 5200C-LBM | Latchbolt monitor | \$279 |
| 5200C-LBSM | Latchbolt strike monitor | \$289 |

Electric Strike Bodies

| MODELS & FINISHES | DESCRIPTION | PRICE |
|-------------------|--------------------------|-------|
| 5000 | | \$175 |
| 5000-LBM | Latchbolt monitor | \$250 |
| 5200 | | \$180 |
| 5200-LBM | Latchbolt monitor | \$255 |
| 5200-LBSM | Latchbolt strike monitor | \$265 |

Faceplates

| MODELS & FINISHES | 630 | BLK | 605 | 606 | 612 | 613 | 629 |
|-------------------|------|------|------|------|------|------|------|
| 501 | \$19 | \$40 | \$65 | \$48 | \$48 | \$40 | \$65 |
| 501A | \$24 | \$44 | \$71 | \$51 | \$51 | \$44 | \$71 |
| 502 | \$42 | \$57 | \$85 | \$70 | \$70 | \$57 | \$85 |
| 503 | \$42 | \$57 | \$85 | \$70 | \$70 | \$57 | \$85 |
| 504 | \$42 | \$57 | \$85 | \$70 | \$70 | \$57 | \$85 |

Accessories

| MODEL | DESCRIPTION | PRICE |
|------------|--------------------------------|-------|
| 157 | Torx screws | \$13 |
| 5000-105 | Trim enhancer (goof plate) | \$31 |
| 5104-1/2 | 1/2" stackable lip extension | \$52 |
| 5104-1 | 1" stackable lip extension | \$58 |
| 5104-1-1/4 | 1-1/4" stackable lip extension | \$60 |
| 5200-105 | Trim enhancer (goof plate) | \$31 |
| 5200-500 | Filler block | \$55 |
| 5204-1/2 | 1/2" stackable lip extension | \$52 |
| 5204-1 | 1" stackable lip extension | \$58 |
| 5204-1-1/4 | 1-1/4" stackable lip extension | \$60 |

How to Order Specify quantity and the following information. Order related products separately.

| SERIES | MODEL | FINISH* | OPTION(S) |
|--|--|----------------------------|----------------------------------|
| 5000, 5200 | — | — 630 | — LBM |
| 5000, 5200 Universal Electric Strike; faceplates ordered separately | C Complete Electric Strike; includes the 501 and 501A faceplates | 605 Bright Brass | LBM Latchbolt Monitor |
| | | 606 Satin Brass | |
| | | 612 Satin Bronze | LBSM Latchbolt Strike Monitor |
| | | 613 Bronze Toned | |
| | | 629 Bright Stainless Steel | |
| | | 630 Satin Stainless Steel | |
| | | BLK Black | |

*Complete Pacs are only available in the 630 finish.

HES 7000



Complete Pacs for Latchbolt Locks

| MODELS & FINISHES | DESCRIPTION | 630 |
|-------------------|-------------------|-------|
| 7000C | | \$305 |
| 7000C-LBM | Latchbolt monitor | \$415 |

Electric Strike Bodies

| MODELS | DESCRIPTION | PRICE |
|-----------------|-------------------|-------|
| 7000 | | \$246 |
| 7000-LBM | Latchbolt monitor | \$356 |

Faceplates

| CYLINDRICAL LOCK OPTIONS | 630 | BLK | 613E | 605 | 606 | 612 | 629 |
|--------------------------|-------|------|-------|-------|------|------|-------|
| 791 | \$59 | \$78 | \$78 | \$106 | \$90 | \$90 | \$106 |
| 792 | \$59 | \$78 | \$78 | \$106 | \$90 | \$90 | \$106 |
| RIM EXIT DEVICES OPTIONS | 630 | BLK | 613E | 605 | 606 | 612 | 629 |
| 783S | \$152 | - | \$217 | - | - | - | - |
| 786S | \$170 | - | \$247 | - | - | - | - |
| 789S | \$170 | - | \$247 | - | - | - | - |

7000 Accessories

| MODEL | DESCRIPTION | PRICE |
|-----------------|---|-------|
| 157 | Torx screws | \$13 |
| 7000-104 | Lip extension trim adapter (791 & 792 options only) | \$31 |
| 7000-105 | Trim enhancer (goof plate) (791 & 792 options only) | \$31 |
| 7000-106 | Keeper pocket adapter (783S & 789S options only) | \$30 |
| 7000-107 | Full keeper shim pack | \$16 |
| 7000-108 | Spacer plate (783S & 789S options, black finish only) | \$33 |
| 7000-110 | Replacement strike plate (701 option only) | \$103 |
| SMB | Surface mounting box (783S and 789S options only) | \$209 |

How to Order Specify quantity and the following information. Order related products separately.

| SERIES | MODEL | FINISH* | | OPTION(S) |
|---|---|--|--|-----------------------|
| 7000 | — | — 630 | | — LBM |
| | | 791 AND 792 OPTIONS | 783S, 786S, 789S OPTIONS | |
| 7000 Universal Electric Strike; faceplates ordered separately | C Complete Electric Strike; includes the 791 and 792 faceplates | 605 Bright Brass | 613E Dark Oxidized Satin Bronze Powder | LBM Latchbolt Monitor |
| | | 606 Satin Brass | | |
| | | 612 Satin Bronze | 630 Satin Stainless Steel | |
| | | 613E Dark Oxidized Satin Bronze Powder | | |
| | | 629 Bright Stainless Steel | | |
| | | 630 Satin Stainless Steel | | |
| | | BLK Black | | |

*Complete Pacs are only available in 630 finish.

HES 7501



Complete Electric Strike Kits

| MODELS & FINISHES | DESCRIPTION | 630 | 605 | 606 | 612 | 613 | 629 |
|-------------------|-------------------|-------|-------|-------|-------|-------|-------|
| 7501 | | \$606 | \$692 | \$679 | \$679 | \$663 | \$692 |
| 7501-LBM | Latchbolt monitor | \$716 | \$802 | \$789 | \$789 | \$773 | \$802 |

How to Order Specify quantity and the following information. Order related products separately.

| SERIES | FINISH | OPTION(S) |
|---|----------------------------|-----------------------|
| 7501 | - 630 | - LBM |
| 7501 Universal Electric Strike; includes faceplate for cylindrical locksets | 605 Bright Brass | LBM Latchbolt Monitor |
| | 606 Satin Brass | |
| | 612 Satin Bronze | |
| | 613 Bronze Toned | |
| | 629 Bright Stainless Steel | |
| | 630 Satin Stainless Steel | |

HES 8000, 8300



Complete Pac for Latchbolt Locks

| MODELS & FINISH | DESCRIPTION | 630 |
|-----------------|-------------------|-------|
| 8000C | | \$240 |
| 8000C-LBM | Latchbolt monitor | \$350 |
| 8300C | | \$535 |
| 8300C-LBM | Latchbolt monitor | \$645 |

Electric Strike Bodies

| MODELS | DESCRIPTION | PRICE |
|----------|-------------------|-------|
| 8000 | | \$210 |
| 8000-LBM | Latchbolt monitor | \$320 |
| 8300 | | \$505 |
| 8300-LBM | Latchbolt monitor | \$615 |

Faceplates

| OPTIONS & FINISHES | 630 | BLK | 605 | 606 | 612 | 613 | 629 |
|--------------------|------|------|------|------|------|------|------|
| 801 | \$30 | \$50 | \$78 | \$62 | \$62 | \$50 | \$78 |
| 801A | \$35 | \$55 | \$83 | \$67 | \$67 | \$55 | \$83 |
| 801E | \$30 | \$50 | \$78 | \$62 | \$62 | \$50 | \$78 |
| 802 | \$48 | \$68 | \$96 | \$80 | \$80 | \$68 | \$96 |
| 803 | \$48 | \$68 | \$96 | \$80 | \$80 | \$68 | \$96 |
| 805 | \$48 | \$68 | \$96 | \$80 | \$80 | \$68 | \$96 |

How to Order Specify quantity and the following information. Order related products separately.

| SERIES | MODEL | FINISH* | OPTION(S) |
|---|--|----------------------------|-----------------------|
| 8000 | - | - 630 | - LBM |
| 8000, 8300 Universal Electric Strike; faceplates ordered separately | C Complete Electric Strike; includes the 801 and 801A faceplates | 605 Bright Brass | LBM Latchbolt Monitor |
| | | 606 Satin Brass | |
| | | 612 Satin Bronze | |
| | | 613 Bronze Toned | |
| | | 629 Bright Stainless Steel | |
| | | 630 Satin Stainless Steel | |
| | | BLK Black | |

*Complete Pacs are only available in the 630 finish.

HES 8500



Electric Strike Bodies

| MODELS & FINISHES | DESCRIPTION | 630 | 605 | 606 | 612 | 613 | 629 |
|-------------------|--------------------------|-------|-------|-------|-------|-------|-------|
| 8500 | | \$505 | \$563 | \$553 | \$553 | \$553 | \$563 |
| 8500-LBM | Latchbolt monitor | \$615 | \$673 | \$663 | \$663 | \$663 | \$673 |
| 8500-LBSM | Latchbolt strike monitor | \$625 | \$683 | \$673 | \$673 | \$673 | \$683 |

Faceplates

| OPTIONS | 630 | 605 | 606 | 612 | 613 | 629 |
|-------------------------------|------|------|------|------|------|------|
| 851M, 852M, 852L, 852K | \$39 | \$87 | \$71 | \$71 | \$61 | \$87 |

How to Order *Specify quantity and the following information. Order related products separately.*

| SERIES | MODEL | FINISH* | OPTION(S) |
|--|---|-----------------------------------|--------------------------------------|
| 8500 | — | – 630 | – LBM |
| 8500 Universal Electric Strike; faceplates ordered separately | C Complete Electric Strike; includes the 801 and 801A faceplates | 605 Bright Brass | LBM Latchbolt Monitor |
| | | 606 Satin Brass | |
| | | 612 Satin Bronze | LBSM Latchbolt Strike Monitor |
| | | 613 Bronze Toned | |
| | | 629 Bright Stainless Steel | |
| | | 630 Satin Stainless Steel | |

*Complete Pacs are only available in the 630 finish.

Securitron UNL, MUNL



Complete Pacs for Latchbolt Locks

| MODELS & FINISHES | US26D/626 | US10B/613 | US03/605 |
|-------------------|-----------|-----------|----------|
| UNL-12 | \$466 | \$522 | — |
| UNL-24 | \$466 | \$522 | — |
| MUNL-12 | \$655 | \$704 | \$704 |
| MUNL-24 | \$655 | \$704 | \$704 |

Accessories

| MODEL | PRICE |
|--|-------|
| FSUNL-12 Fail Safe/Fail Secure UnLatch Module, 12 VDC | \$117 |
| FSUNL-24 Fail Safe/Fail Secure UnLatch Module, 24 VDC | \$117 |

How to Order *Specify quantity and the following information. Order related products separately.*

| SERIES | FAIL SAFE/SECURE | VOLTAGE | FINISH |
|------------------------|--|-------------------|--|
| MUNL | — | – 24 | – 10B |
| UNL Cylindrical | (blank) Fail Secure (Standard) | 12 12 Volt | (blank) US26D/626—Stainless Steel |
| MUNL Mortise | Note: FSUNL for field-selectable fail safe operation ordered separately | 24 24 Volt | 10B US10B/613—Oil Rubbed Bronze |
| | | | US3 US03/605—Bright Brass |

HES 9400, 9500, 9600, 9700, 9800



Surface Mounted Electric Strikes for Rim Exit Devices

| MODELS & FINISHES | 630 | BSP | 613E | 628E | 605 | 606 | 612 | 613 | 629 |
|-------------------|----------------|-------|-------|-------|-------|-------|-------|-------|-------|
| 9400 | \$510 | \$542 | \$542 | — | \$596 | \$583 | \$583 | \$583 | \$596 |
| 9400-LBM | \$620 | \$652 | \$652 | — | \$706 | \$693 | \$693 | \$693 | \$706 |
| 9400-LBSM | \$630 | \$662 | \$662 | — | \$716 | \$703 | \$703 | \$703 | \$716 |
| 9500 | \$595 | — | \$627 | — | \$681 | \$668 | \$668 | \$668 | \$681 |
| 9500-LBM | \$705 | — | \$737 | — | \$791 | \$778 | \$778 | \$778 | \$791 |
| 9500-LBSM | \$715 | — | \$747 | — | \$801 | \$788 | \$788 | \$788 | \$801 |
| 9600 | \$510 | \$542 | \$542 | — | \$596 | \$583 | \$583 | \$583 | \$596 |
| 9600-LBM | \$620 | \$652 | \$652 | — | \$706 | \$693 | \$693 | \$693 | \$706 |
| 9600-LBSM | \$630 | \$662 | \$662 | — | \$716 | \$703 | \$703 | \$703 | \$716 |
| 9700 | \$595 | — | \$627 | — | \$681 | \$668 | \$668 | \$668 | \$681 |
| 9700-LBM | \$705 | — | \$737 | — | \$791 | \$778 | \$778 | \$778 | \$791 |
| 9700-LBSM | \$715 | — | \$747 | — | \$801 | \$788 | \$788 | \$788 | \$801 |
| 9800 | \$595 | \$627 | \$627 | \$627 | \$681 | \$668 | — | — | \$681 |
| 9800-LBM | Coming in 2019 | | | | | | | | |
| 9800-LBSM | Coming in 2019 | | | | | | | | |

Accessories

| MODELS & FINISHES | DESCRIPTION | PRICE |
|-------------------|---------------------------------|-------|
| SMB | 7000, 9000 surface mounting box | \$209 |
| 9000-ASB | Aluminum spacer bracket | — |
| 9000-MTK | Metal template installation kit | \$75 |

Spacer Plates

| MODELS & FINISHES | DESCRIPTION | 630 | BSP | 613E | 628E |
|-------------------|--------------------|------|------|------|------|
| 9000-108-XXX | 1/8" Spacer plate | \$32 | \$45 | \$45 | \$45 |
| 9000-116-XXX | 1/16" Spacer plate | \$32 | \$45 | \$45 | \$45 |

How to Order Specify quantity and the following information. Order related products separately.

| SERIES | FINISH | OPTION(S) |
|---|---------------------------------|-------------------------------|
| 9600 | – 630 | – LBM |
| 9400 Surface Mounted Electric Strike for 1/2" Pullman Exit Device; no faceplates required | 605 Bright Brass | LBM Latchbolt Monitor |
| | 606 Satin Brass | |
| 9500 Surface Mounted Electric Strike for 3/4" Pullman, fire rated; no faceplates required | 612 Satin Bronze | |
| | 613 Bronze Toned | |
| 9600 Surface Mounted Electric Strike for 3/4" Pullman Rim Exit Devices, non-fire rated; no faceplates required | 613E Dark Oxidized Satin Bronze | LBSM Latchbolt Strike Monitor |
| | 629 Bright Stainless Steel | |
| 9700 Surface Mounted Electric Strike for Corbin Russwin SecureBolt® and Yale SquareBolt® Rim Exit Devices; no faceplates required | 628E Satin Aluminum Powder | |
| | 630 Satin Stainless Steel | |
| 9800 Surface Mounted Electric Strike for Adams Rite® Starwheel and Interlocking Rim Exit Devices; no faceplates required | BSP Black Suede Powder | |

**HES
Folger Adam
SB:310-1(X),
310-2**



SB: 310-1(X) Electric Strike Bodies

| MODELS & KEEPER STYLE | (1/2) | (3/4) | -1 | (PK) | (SK) |
|-------------------------------|-------|-------|-------|-------|-------|
| 310-1-12D | \$530 | \$530 | \$530 | \$530 | \$545 |
| 310-1-24D | \$530 | \$530 | \$530 | \$530 | \$545 |
| 310-1-F-12D (Fail Safe) | \$530 | \$530 | \$530 | \$530 | \$545 |
| 310-1-F-24D (Fail Safe) | \$530 | \$530 | \$530 | \$530 | \$545 |
| 310-1-12D-LCBMA | \$664 | \$664 | \$664 | \$664 | \$678 |
| 310-1-24D-LCBMA | \$664 | \$664 | \$664 | \$664 | \$678 |
| 310-1-F-12D-LCBMA (Fail Safe) | \$664 | \$664 | \$664 | \$664 | \$678 |
| 310-1-F-24D-LCBMA (Fail Safe) | \$664 | \$664 | \$664 | \$664 | \$678 |

How to Order *Specify quantity and the following information. Order related products separately.*

| PREFIX | SERIES | KEEPER STYLE | FAIL SAFE/SECURE | VOLTAGE | OPTION(S) |
|-------------------------|------------------------|--|--------------------------------|--------------|---|
| SB | 310-1 | (3/4) | - F | - 24D | - LCBMA |
| STRIKE BODY ONLY | | | | | |
| SB Strike Body | 310-1 Strike Body Only | (1/2) 1/2" keeper | (blank) Fail Secure (Standard) | 12D 12 Volt | LCBMA Latchbolt & locking cam monitor with auxiliary switch |
| | | (3/4) 3/4" keeper | F Fail Safe | 24D 24 Volt | |
| | | (1) 1" keeper | | | |
| | | (PK) For use with 3/4" Pullman style latchbolts | | | |
| | | (SK) For use with Squarebolt® style rim exit devices | | | |

310-2 Complete Pacs for Latchbolt Locks

| MODELS & FINISHES | 630 | 605 | 606 | 612 | 613 | 629 |
|-------------------------------|-------|-------|-------|-------|-------|-------|
| 310-2-12D | \$676 | \$778 | \$747 | \$747 | \$712 | \$778 |
| 310-2-24D | \$676 | \$778 | \$747 | \$747 | \$712 | \$778 |
| 310-2-F-12D (Fail Safe) | \$676 | \$778 | \$747 | \$747 | \$712 | \$778 |
| 310-2-F-24D (Fail Safe) | \$676 | \$778 | \$747 | \$747 | \$712 | \$778 |
| 310-2-12D-LCBMA | \$809 | \$911 | \$880 | \$880 | \$846 | \$911 |
| 310-2-24D-LCBMA | \$809 | \$911 | \$880 | \$880 | \$846 | \$911 |
| 310-2-F-12D-LCBMA (Fail Safe) | \$809 | \$911 | \$880 | \$880 | \$846 | \$911 |
| 310-2-F-24D-LCBMA (Fail Safe) | \$809 | \$911 | \$880 | \$880 | \$846 | \$911 |

Faceplates

| OPTION | 630 | 605 | 606 | 612 | 613 | 629 |
|------------------|-------|-------|-------|-------|-------|-------|
| FP: 310-2 | \$146 | \$248 | \$216 | \$216 | \$182 | \$248 |

NOTE: These products will require relocation of the center line when used with mortise locks. Consult customer support regarding use with the Best 40 series.

HES Folger Adam 310-2 3/4, 310-2 3/4OB



310-2 3/4 Complete Pacs for Latchbolt Locks

| MODELS & FINISHES | 630 | 605 | 606 | 612 | 613 | 629 |
|-----------------------------------|-------|---------|-------|-------|-------|---------|
| 310-2 3/4-12D | \$771 | \$870 | \$841 | \$841 | \$807 | \$868 |
| 310-2 3/4-24D | \$771 | \$870 | \$841 | \$841 | \$807 | \$868 |
| 310-2 3/4-F-12D (Fail Safe) | \$771 | \$870 | \$841 | \$841 | \$807 | \$868 |
| 310-2 3/4-F-24D (Fail Safe) | \$771 | \$870 | \$841 | \$841 | \$807 | \$868 |
| 310-2 3/4-12D-LCBMA | \$904 | \$1,004 | \$974 | \$974 | \$940 | \$1,002 |
| 310-2 3/4-24D-LCBMA | \$904 | \$1,004 | \$974 | \$974 | \$940 | \$1,002 |
| 310-2 3/4-F-12D-LCBMA (Fail Safe) | \$904 | \$1,004 | \$974 | \$974 | \$940 | \$1,002 |
| 310-2 3/4-F-24D-LCBMA (Fail Safe) | \$904 | \$1,004 | \$974 | \$974 | \$940 | \$1,002 |

310-2 3/4 Faceplates

| OPTION | 630 | 605 | 606 | 612 | 613 | 629 |
|---------------|-------|-------|-------|-------|-------|-------|
| FP: 310-2 3/4 | \$240 | \$340 | \$311 | \$311 | \$277 | \$338 |

310-2 3/4OB Complete Pacs for Latchbolt Locks

| MODELS & FINISHES | 630 | 605 | 606 | 612 | 613 | 629 |
|-------------------------------|-------|---------|---------|---------|-------|---------|
| 310-2 3/4OB-12D | \$953 | \$1,054 | \$1,024 | \$1,024 | \$993 | \$1,054 |
| 310-2 3/4OB-24D | \$953 | \$1,054 | \$1,024 | \$1,024 | \$993 | \$1,054 |
| 310-2 3/4OB-F-12D (Fail Safe) | \$953 | \$1,054 | \$1,024 | \$1,024 | \$993 | \$1,054 |
| 310-2 3/4OB-F-24D (Fail Safe) | \$953 | \$1,054 | \$1,024 | \$1,024 | \$993 | \$1,054 |

310-2 3/4OB Faceplates

| OPTION | 630 | 605 | 606 | 612 | 613 | 629 |
|------------------|-------|-------|-------|-------|-------|-------|
| FP: 310-2 3/4 OB | \$422 | \$523 | \$494 | \$494 | \$463 | \$523 |

NOTE: These products will require relocation of the center line when used with mortise locks. Consult customer support regarding use with the Best 40 series.

HES
Folger Adam
310-2 3/4OB,
310-3-1



310-3-1 Complete Pacs for Latchbolt Locks & Deadbolts

| MODELS & FINISHES | 630 | 605 | 606 | 612 | 613 | 629 |
|---------------------------------|---------|---------|---------|---------|---------|---------|
| 310-3-1-12D | \$966 | \$1,019 | \$994 | \$994 | \$961 | \$1,019 |
| 310-3-1-24D | \$966 | \$1,019 | \$994 | \$994 | \$961 | \$1,019 |
| 310-3-1-F-12D (Fail Safe) | \$966 | \$1,019 | \$994 | \$994 | \$961 | \$1,019 |
| 310-3-1-F-24D (Fail Safe) | \$966 | \$1,019 | \$994 | \$994 | \$961 | \$1,019 |
| 310-3-1-12D-LCBMA | \$1,099 | \$1,152 | \$1,127 | \$1,127 | \$1,094 | \$1,152 |
| 310-3-1-24D-LCBMA | \$1,099 | \$1,152 | \$1,127 | \$1,127 | \$1,094 | \$1,152 |
| 310-3-1-F-12D-LCBMA (Fail Safe) | \$1,099 | \$1,152 | \$1,127 | \$1,127 | \$1,094 | \$1,152 |
| 310-3-1-F-24D-LCBMA (Fail Safe) | \$1,099 | \$1,152 | \$1,127 | \$1,127 | \$1,094 | \$1,152 |

310-3-1 Faceplates

| OPTION | 630 | 605 | 606 | 612 | 613 | 629 |
|-------------------------|-------|-------|-------|-------|-------|-------|
| FP: 310-3-1 (with Plug) | \$436 | \$489 | \$464 | \$464 | \$431 | \$489 |

How to Order *Specify quantity and the following information. Order related products separately.*

| SERIES | FAIL SAFE/SECURE | VOLTAGE | FINISH | OPTION(S) |
|---|--------------------------------|--------------|---|--|
| 310-2 | - F | - 24D | - 613 | - LCBMA |
| COMPLETE PACS | | | | |
| 310-2 1/2" keeper standard; for up to a 5/8" throw latchbolt | (blank) Fail Secure (Standard) | 12D 12 Volt | 605 Bright Brass 606 Satin Brass | LCBMA* Latchbolt & locking cam monitor with auxiliary switch |
| 310-2 3/4 3/4" keeper standard; for up to a 3/4" throw latchbolt without deadbolt | F Fail Safe | 24D 24 Volt | 612 Satin Bronze 613 Bronze Toned | |
| 310-2 3/4OB* 3/4" keeper standard; for a pair of doors without a door coordinator | | | 629 Bright Stainless Steel 630 Satin Stainless Steel | |
| 310-3-1 1" keeper standard; for up to a 3/4" throw latchbolt and a 1" deadbolt | | | | |

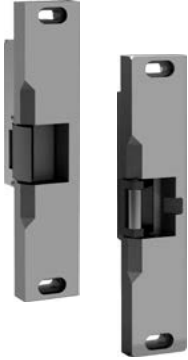
*LCBMA not available with 310-2 3/4OB.

How to Order *Specify quantity and the following information. Order related products separately.*

| PREFIX | SERIES | FINISH |
|-----------------------|---|----------------------------|
| FP | - 310-2 3/4OB | - 630 |
| FACEPLATE ONLY | | |
| FP Faceplate | 310-2 1/2" keeper standard; for up to a 5/8" throw latchbolt | 605 Bright Brass |
| | 310-2 3/4 3/4" keeper standard; for up to a 3/4" throw latchbolt without deadbolt | 606 Satin Brass |
| | 310-2 3/4OB 3/4" keeper standard; for a pair of doors without a door coordinator | 612 Satin Bronze |
| | 310-3-1 1" keeper standard; for up to a 3/4" throw latchbolt and a 1" deadbolt | 613 Bronze Toned |
| | | 629 Bright Stainless Steel |
| | | 630 Satin Stainless Steel |

NOTE: These products will require relocation of the center line when used with mortise locks. Consult customer support regarding use with the Best 40 series.

HES
Folger Adam
310-4, 310-4(S)



310-4 Complete Pacs for Pullman Rim Exit Devices

| MODELS & FINISHES | 630 | 605 | 606 | 612 | 613 | 629 |
|-------------------------------|-------|-------|-------|-------|-------|-------|
| 310-4-12D | \$706 | \$811 | \$781 | \$781 | \$745 | \$811 |
| 310-4-24D | \$706 | \$811 | \$781 | \$781 | \$745 | \$811 |
| 310-4-F-12D (Fail Safe) | \$706 | \$811 | \$781 | \$781 | \$745 | \$811 |
| 310-4-F-24D (Fail Safe) | \$706 | \$811 | \$781 | \$781 | \$745 | \$811 |
| 310-4-12D-LCBMA | \$839 | \$944 | \$914 | \$914 | \$878 | \$944 |
| 310-4-24D-LCBMA | \$839 | \$944 | \$914 | \$914 | \$878 | \$944 |
| 310-4-F-12D-LCBMA (Fail Safe) | \$839 | \$944 | \$914 | \$914 | \$878 | \$944 |
| 310-4-F-24D-LCBMA (Fail Safe) | \$839 | \$944 | \$914 | \$914 | \$878 | \$944 |

310-4 Faceplates

| OPTION | 630 | 605 | 606 | 612 | 613 | 629 |
|-----------|-------|-------|-------|-------|-------|-------|
| FP: 310-4 | \$176 | \$281 | \$251 | \$251 | \$214 | \$281 |

310-4 (S) Complete Pacs for Squarebolt® Rim Exit Devices

| MODELS & FINISHES | 630 | 605 | 606 | 612 | 613 | 629 |
|----------------------------------|-------|-------|-------|-------|-------|-------|
| 310-4(S)-12D | \$750 | \$851 | \$822 | \$822 | \$787 | \$851 |
| 310-4(S)-24D | \$750 | \$851 | \$822 | \$822 | \$787 | \$851 |
| 310-4(S)-F-12D (Fail Safe) | \$750 | \$851 | \$822 | \$822 | \$787 | \$851 |
| 310-4(S)-F-24D (Fail Safe) | \$750 | \$851 | \$822 | \$822 | \$787 | \$851 |
| 310-4(S)-12D-LCBMA | \$883 | \$984 | \$955 | \$955 | \$920 | \$984 |
| 310-4(S)-24D-LCBMA | \$883 | \$984 | \$955 | \$955 | \$920 | \$984 |
| 310-4(S)-F-12D-LCBMA (Fail Safe) | \$883 | \$984 | \$955 | \$955 | \$920 | \$984 |
| 310-4(S)-F-24D-LCBMA (Fail Safe) | \$883 | \$984 | \$955 | \$955 | \$920 | \$984 |

310-4 (S) Faceplates

| OPTION | 630 | 605 | 606 | 612 | 613 | 629 |
|-------------|-------|-------|-------|-------|-------|-------|
| FP 310-4(S) | \$205 | \$306 | \$277 | \$277 | \$242 | \$306 |

How to Order *Specify quantity and the following information. Order related products separately.*

| SERIES | FAIL SAFE/SECURE | VOLTAGE | FINISH | OPTION(S) |
|--|--------------------------------|-------------|----------------------------|--|
| 310-4 (S) | - F | - 12D | - 605 | - LCBMA |
| COMPLETE PACS | | | | |
| 310-4 PK keeper standard; for use with 3/4" Pullman style latchbolts | (blank) Fail Secure (Standard) | 12D 12 Volt | 605 Bright Brass | LCBMA* Latchbolt & locking cam monitor with auxiliary switch |
| | F Fail Safe | 24D 24 Volt | 606 Satin Brass | |
| 310-4(S) SK keeper standard; for use with Squarebolt® style rim exit devices | | | 612 Satin Bronze | |
| | | | 613 Bronze Toned | |
| | | | 629 Bright Stainless Steel | |
| | | | 630 Satin Stainless Steel | |

How to Order *Specify quantity and the following information. Order related products separately.*

| PREFIX | SERIES | KEEPER STYLE | FINISH |
|------------------------|--|--|----------------------------|
| FP | - 310-4 | (SK) | - 630 |
| FACEPLATES ONLY | | | |
| FP Faceplate | 310-4 PK keeper standard; for use with 3/4" Pullman style latchbolts | (SK) For use with Squarebolt® style rim exit devices | 605 Bright Brass |
| | 310-4(S) SK keeper standard; for use with Squarebolt® style rim exit devices | | 606 Satin Brass |
| | | | 612 Satin Bronze |
| | | | 613 Bronze Toned |
| | | | 629 Bright Stainless Steel |
| | | 630 Satin Stainless Steel | |

**HES
Folger Adam
310-4-X**



310-4-1 Complete Pacs for Surface Vertical Rods

| MODELS & FINISHES | 630 | 605 | 606 | 612 | 613 | 629 |
|---------------------------------|---------|---------|---------|---------|---------|---------|
| 310-4-1-12D | \$1,322 | \$1,364 | \$1,329 | \$1,329 | \$1,322 | \$1,364 |
| 310-4-1-24D | \$1,322 | \$1,364 | \$1,329 | \$1,329 | \$1,322 | \$1,364 |
| 310-4-1-F-12D (Fail Safe) | \$1,322 | \$1,364 | \$1,329 | \$1,329 | \$1,322 | \$1,364 |
| 310-4-1-F-24D (Fail Safe) | \$1,322 | \$1,364 | \$1,329 | \$1,329 | \$1,322 | \$1,364 |
| 310-4-1-12D-LCBMA | \$1,559 | \$1,602 | \$1,566 | \$1,566 | \$1,559 | \$1,602 |
| 310-4-1-24D-LCBMA | \$1,559 | \$1,602 | \$1,566 | \$1,566 | \$1,559 | \$1,602 |
| 310-4-1-F-12D-LCBMA (Fail Safe) | \$1,559 | \$1,602 | \$1,566 | \$1,566 | \$1,559 | \$1,602 |
| 310-4-1-F-24D-LCBMA (Fail Safe) | \$1,559 | \$1,602 | \$1,566 | \$1,566 | \$1,559 | \$1,602 |

Vertical rod spacing between 4" and 4-3/4".

310-4-1 Faceplates

| OPTION | 630 | 605 | 606 | 612 | 613 | 629 |
|-------------|-------|-------|-------|-------|-------|-------|
| FP: 310-4-1 | \$365 | \$408 | \$372 | \$372 | \$365 | \$408 |

310-4-2 Complete Pacs for Surface Vertical Rods

| MODELS & FINISHES | 630 | 605 | 606 | 612 | 613 | 629 |
|---------------------------------|---------|---------|---------|---------|---------|---------|
| 310-4-2-12D | \$1,322 | \$1,364 | \$1,329 | \$1,329 | \$1,322 | \$1,364 |
| 310-4-2-24D | \$1,322 | \$1,364 | \$1,329 | \$1,329 | \$1,322 | \$1,364 |
| 310-4-2-F-12D (Fail Safe) | \$1,322 | \$1,364 | \$1,329 | \$1,329 | \$1,322 | \$1,364 |
| 310-4-2-F-24D (Fail Safe) | \$1,322 | \$1,364 | \$1,329 | \$1,329 | \$1,322 | \$1,364 |
| 310-4-2-12D-LCBMA | \$1,559 | \$1,602 | \$1,566 | \$1,566 | \$1,559 | \$1,602 |
| 310-4-2-24D-LCBMA | \$1,559 | \$1,602 | \$1,566 | \$1,566 | \$1,559 | \$1,602 |
| 310-4-2-F-12D-LCBMA (Fail Safe) | \$1,559 | \$1,602 | \$1,566 | \$1,566 | \$1,559 | \$1,602 |
| 310-4-2-F-24D-LCBMA (Fail Safe) | \$1,559 | \$1,602 | \$1,566 | \$1,566 | \$1,559 | \$1,602 |

Vertical rod spacing between 4-5/8" and 5-3/8".

310-4-2 Faceplates

| OPTION | 630 | 605 | 606 | 612 | 613 | 629 |
|-------------|-------|-------|-------|-------|-------|-------|
| FP: 310-4-2 | \$365 | \$408 | \$372 | \$372 | \$365 | \$408 |

310-4-3 Complete Pacs for Surface Vertical Rods

| MODELS & FINISHES | 630 | 605 | 606 | 612 | 613 | 629 |
|---------------------------------|---------|---------|---------|---------|---------|---------|
| 310-4-3-12D | \$1,384 | \$1,428 | \$1,395 | \$1,395 | \$1,384 | \$1,428 |
| 310-4-3-24D | \$1,384 | \$1,428 | \$1,395 | \$1,395 | \$1,384 | \$1,428 |
| 310-4-3-F-12D (Fail Safe) | \$1,384 | \$1,428 | \$1,395 | \$1,395 | \$1,384 | \$1,428 |
| 310-4-3-F-24D (Fail Safe) | \$1,384 | \$1,428 | \$1,395 | \$1,395 | \$1,384 | \$1,428 |
| 310-4-3-12D-LCBMA | \$1,621 | \$1,665 | \$1,632 | \$1,632 | \$1,621 | \$1,665 |
| 310-4-3-24D-LCBMA | \$1,621 | \$1,665 | \$1,632 | \$1,632 | \$1,621 | \$1,665 |
| 310-4-3-F-12D-LCBMA (Fail Safe) | \$1,621 | \$1,665 | \$1,632 | \$1,632 | \$1,621 | \$1,665 |
| 310-4-3-F-24D-LCBMA (Fail Safe) | \$1,621 | \$1,665 | \$1,632 | \$1,632 | \$1,621 | \$1,665 |

Vertical rod spacing between 5-1/4" and 6".

310-4-3 Faceplates

| OPTION | 630 | 605 | 606 | 612 | 613 | 629 |
|-------------|-------|-------|-------|-------|-------|-------|
| FP: 310-4-3 | \$427 | \$471 | \$438 | \$438 | \$427 | \$471 |

HES Folger Adam 310-4-X continued on next page.

HES
Folger Adam
310-4-X
Cont.

310-4-30 Complete Pacs for Surface Vertical Rods

| MODELS & FINISHES | 630 | 605 | 606 | 612 | 613 | 629 |
|---|---------|---------|---------|---------|---------|---------|
| 310-4-30-12D | \$1,384 | \$1,428 | \$1,395 | \$1,395 | \$1,384 | \$1,428 |
| 310-4-30-24D | \$1,384 | \$1,428 | \$1,395 | \$1,395 | \$1,384 | \$1,428 |
| 310-4-30-F-12D (Fail Safe) | \$1,384 | \$1,428 | \$1,395 | \$1,395 | \$1,384 | \$1,428 |
| 310-4-30-F-24D (Fail Safe) | \$1,384 | \$1,428 | \$1,395 | \$1,395 | \$1,384 | \$1,428 |
| 310-4-30-12D-LCBMA | \$1,621 | \$1,665 | \$1,632 | \$1,632 | \$1,621 | \$1,665 |
| 310-4-30-24D-LCBMA | \$1,621 | \$1,665 | \$1,632 | \$1,632 | \$1,621 | \$1,665 |
| 310-4-30-F-12D-LCBMA (Fail Safe) | \$1,621 | \$1,665 | \$1,632 | \$1,632 | \$1,621 | \$1,665 |
| 310-4-30-F-24D-LCBMA (Fail Safe) | \$1,621 | \$1,665 | \$1,632 | \$1,632 | \$1,621 | \$1,665 |

Vertical rod spacing between 2-5/8" and 3-3/8".

310-4-30 Faceplates

| OPTION | 630 | 605 | 606 | 612 | 613 | 629 |
|---------------------|-------|-------|-------|-------|-------|-------|
| FP: 310-4-30 | \$427 | \$471 | \$438 | \$438 | \$427 | \$471 |

| HOW TO ORDER <i>Specify quantity and the following information. Order related products separately.</i> | | | | | |
|--|--|---------------------------------------|-----------------------------------|-------------------------|--|
| SERIES | KEEPER STYLE | FAIL SAFE/SECURE | VOLTAGE | FINISH | OPTION(S) |
| 310-4-X | (PK) | F | - 24D | - 612 | - LCBMA |
| COMPLETE PACS | | | | | |
| 1 For use with vertical rod spacing between 4" and 4-3/4" | (PK) For use with 3/4" Pullman style latchbolts | (blank) Fail Secure (Standard) | 12D 12 Volt | 605 Bright Brass | LCBMA Latchbolt & locking cam monitor with auxiliary switch |
| | | | | 606 Satin Brass | |
| 2 For use with vertical rod spacing between 4-5/8" and 5-3/8" | | F Fail Safe | 24D 24 Volt | 612 Satin Bronze | |
| | | | | 613 Bronze Toned | |
| 3 For use with vertical rod spacing between 5-1/4" and 6" | | | 629 Bright Stainless Steel | | |
| 30 For use with vertical rod spacing between 2-5/8" and 3-3/8" | | | 630 Satin Stainless Steel | | |

How to Order *Specify quantity and the following information. Order related products separately.*

| PREFIX | SERIES | KEEPER STYLE | FINISH |
|---------------------|---|--|-----------------------------------|
| FP | - 310-4-X | (PK) | - 630 |
| FACEPLATE ONLY | | | |
| FP Faceplate | 1 For use with vertical rod spacing between 4" and 4-3/4" | (PK) For use with 3/4" Pullman style latchbolts | 605 Bright Brass |
| | 2 For use with vertical rod spacing between 4-5/8" and 5-3/8" | | 606 Satin Brass |
| | 30 For use with vertical rod spacing between 2-5/8" and 3-3/8" | | 612 Satin Bronze |
| | | | 613 Bronze Toned |
| | | | 629 Bright Stainless Steel |
| | | | 630 Satin Stainless Steel |

INSTALLATION NOTE: Double-door models are available with four different center-to-center dimensions between latchbolt keepers. Keepers are wide enough to compensate for vertical rod exit bolts, which may be as much as 3/8" (10 mm) off center-to-center dimension, either way.

When using an electric strike in conjunction with a vertical rod exit device, it is necessary that:

1. The bottom rod of the exit device be removed or made inoperative
2. The latchbolt of the exit device be the "Pullman" or beveled type
3. The latchbolt be free-latching and remain projected while the door is open. Mechanisms that hold the latchbolt retracted while the door is open, and automatically release it when the door is closed, must be removed or made inoperative.

HES Folger Adam 310-6-X



310-6-1 Complete Pacs for Concealed Vertical Rods

| MODELS & FINISHES | 627 | 612 |
|---------------------------------|---------|---------|
| 310-6-1-12D | \$1,332 | \$1,552 |
| 310-6-1-24D | \$1,332 | \$1,552 |
| 310-6-1-F-12D (Fail Safe) | \$1,332 | \$1,552 |
| 310-6-1-F-24D (Fail Safe) | \$1,332 | \$1,552 |
| 310-6-1-12D-LCBMA | \$1,569 | \$1,789 |
| 310-6-1-24D-LCBMA | \$1,569 | \$1,789 |
| 310-6-1-F-12D-LCBMA (Fail Safe) | \$1,569 | \$1,789 |
| 310-6-1-F-24D-LCBMA (Fail Safe) | \$1,569 | \$1,789 |

Vertical rod spacing between 4" and 4-3/4".

310-6-1 Faceplates

| OPTION | 627 | 612 |
|-------------|-------|-------|
| FP: 310-6-1 | \$375 | \$595 |

310-6-2 Complete Pacs for Concealed Vertical Rods

| MODELS & FINISHES | 627 | 612 |
|---------------------------------|---------|---------|
| 310-6-2-12D | \$1,332 | \$1,552 |
| 310-6-2-24D | \$1,332 | \$1,552 |
| 310-6-2-F-12D (Fail Safe) | \$1,332 | \$1,552 |
| 310-6-2-F-24D (Fail Safe) | \$1,332 | \$1,552 |
| 310-6-2-12D-LCBMA | \$1,569 | \$1,789 |
| 310-6-2-24D-LCBMA | \$1,569 | \$1,789 |
| 310-6-2-F-12D-LCBMA (Fail Safe) | \$1,569 | \$1,789 |
| 310-6-2-F-24D-LCBMA (Fail Safe) | \$1,569 | \$1,789 |

Vertical rod spacing between 4-5/8" and 5-3/8".

310-6-2 Faceplates

| OPTION | 627 | 612 |
|-------------|-------|-------|
| FP: 310-6-2 | \$375 | \$595 |

310-6-3 Complete Pacs for Concealed Vertical Rods

| MODELS & FINISHES | 627 | 612 |
|---------------------------------|---------|---------|
| 310-6-3-12D | \$1,332 | \$1,552 |
| 310-6-3-24D | \$1,332 | \$1,552 |
| 310-6-3-F-12D (Fail Safe) | \$1,332 | \$1,552 |
| 310-6-3-F-24D (Fail Safe) | \$1,332 | \$1,552 |
| 310-6-3-12D-LCBMA | \$1,569 | \$1,789 |
| 310-6-3-24D-LCBMA | \$1,569 | \$1,789 |
| 310-6-3-F-12D-LCBMA (Fail Safe) | \$1,569 | \$1,789 |
| 310-6-3-F-24D-LCBMA (Fail Safe) | \$1,569 | \$1,789 |

Vertical rod spacing between 5-1/4" and 6".

HES Folger Adam 310-6-X continued on next page.

HES
Folger Adam
310-6-X
 Cont.

310-6-3 Faceplates

| OPTION | 627 | 612 |
|-------------|-------|-------|
| FP: 310-6-3 | \$375 | \$595 |

310-6-8 Complete Pacs for Concealed Vertical Rods

| MODELS & FINISHES | 627 | 612 |
|---------------------------------|---------|---------|
| 310-6-8-12D | \$1,332 | \$1,552 |
| 310-6-8-24D | \$1,332 | \$1,552 |
| 310-6-8-F-12D (Fail Safe) | \$1,332 | \$1,552 |
| 310-6-8-F-24D (Fail Safe) | \$1,332 | \$1,552 |
| 310-6-8-12D-LCBMA | \$1,569 | \$1,789 |
| 310-6-8-24D-LCBMA | \$1,569 | \$1,789 |
| 310-6-8-F-12D-LCBMA (Fail Safe) | \$1,569 | \$1,789 |
| 310-6-8-F-24D-LCBMA (Fail Safe) | \$1,569 | \$1,789 |

Only used on active leaf.

310-6-8 Faceplates

| OPTION | 627 | 612 |
|-------------|-------|-------|
| FP: 310-6-8 | \$375 | \$595 |

INSTALLATION NOTE: Double-door models are available with four different center-to-center dimensions between latchbolt keepers. Keepers are wide enough to compensate for vertical rod exit bolts, which may be as much as 3/8" (10 mm) off center-to-center dimension, either way.

When using an electric strike in conjunction with a vertical rod exit device, it is necessary that:

1. The bottom rod of the exit device be removed or made inoperative
2. The latchbolt of the exit device be the "Pullman" or beveled type
3. The latchbolt be free-latching and remain projected while the door is open. Mechanisms that hold the latchbolt retracted while the door is open, and automatically release it when the door is closed, must be removed or made inoperative.

310-6-30 Complete Pacs for Concealed Vertical Rods

| MODELS & FINISHES | 627 | 612 |
|----------------------------------|---------|---------|
| 310-6-30-12D | \$1,332 | \$1,552 |
| 310-6-30-24D | \$1,332 | \$1,552 |
| 310-6-30-F-12D (Fail Safe) | \$1,332 | \$1,552 |
| 310-6-30-F-24D (Fail Safe) | \$1,332 | \$1,552 |
| 310-6-30-12D-LCBMA | \$1,569 | \$1,789 |
| 310-6-30-24D-LCBMA | \$1,569 | \$1,789 |
| 310-6-30-F-12D-LCBMA (Fail Safe) | \$1,569 | \$1,789 |
| 310-6-30-F-24D-LCBMA (Fail Safe) | \$1,569 | \$1,789 |

Vertical rod spacing between 2-5/8" and 3-3/8".

HES Folger Adam 310-6-X continued on next page.

HES
Folger Adam
310-6-X
Cont.

310-6-30 Faceplates

| OPTION | 627 | 612 |
|--------------|-------|-------|
| FP: 310-6-30 | \$375 | \$595 |

How to Order *Specify quantity and the following information. Order related products separately.*

| SERIES | KEEPER STYLE | FAIL SAFE/SECURE | VOLTAGE | FINISH | OPTION(S) |
|---|--|---------------------------------------|--------------------|---------------------------|--|
| 310-6-X | (PK) | - F | - 24D | - 627 | - LCBMA |
| COMPLETE PACS | | | | | |
| 1 For use with vertical rod spacing between 4" and 4-3/4" | (PK) For use with 3/4" Pullman style latchbolts | (blank) Fail Secure (Standard) | 12D 12 Volt | 612 Satin Bronze | LCBMA Latchbolt & locking cam monitor with auxiliary switch |
| 2 For use with vertical rod spacing between 4-5/8" and 5-3/8" | | F Fail Safe | 24D 24 Volt | 627 Satin Aluminum | |
| 3 For use with vertical rod spacing between 5-1/4" and 6" | | | | | |
| 8 For only the active leaf of a pair of doors | | | | | |
| 30 For use with vertical rod spacing between 2-5/8" and 3-3/8" | | | | | |

How to Order *Specify quantity and the following information. Order related products separately.*

| PREFIX | SERIES | KEEPER STYLE | FINISH |
|-----------------------|---|--|-----------------------------------|
| FP | - 310-6-X | (PK) | - 612 |
| FACEPLATE ONLY | | | |
| FP Faceplate | 1 For use with vertical rod spacing between 4" and 4-3/4" | (PK) For use with 3/4" Pullman style latchbolts | 612 Satin Bronze |
| | 2 For use with vertical rod spacing between 4-5/8" and 5-3/8" | | 629 Bright Stainless Steel |
| | 3 For use with vertical rod spacing between 5-1/4" and 6" | | 630 Satin Stainless Steel |
| | 8 For only the active leaf of a pair of doors | | |
| | 30 For use with vertical rod spacing between 2-5/8" and 3-3/8" | | |

HES Folger Adam 310-1-X



310-1-1 Electric Strike Bodies

| MODELS & KEEPER STYLE | (PK) |
|---------------------------------|---------|
| 310-1-1-12D | \$890 |
| 310-1-1-24D | \$890 |
| 310-1-1-F-12D (Fail Safe) | \$890 |
| 310-1-1-F-24D (Fail Safe) | \$890 |
| 310-1-1-12D-LCBMA | \$1,147 |
| 310-1-1-24D-LCBMA | \$1,147 |
| 310-1-1-F-12D-LCBMA (Fail Safe) | \$1,147 |
| 310-1-1-F-24D-LCBMA (Fail Safe) | \$1,147 |

310-1-2 Electric Strike Bodies

| MODEL & KEEPER | (PK) |
|---------------------------------|---------|
| 310-1-2-12D | \$890 |
| 310-1-2-24D | \$890 |
| 310-1-2-F-12D (Fail Safe) | \$890 |
| 310-1-2-F-24D (Fail Safe) | \$890 |
| 310-1-2-12D-LCBMA | \$1,147 |
| 310-1-2-24D-LCBMA | \$1,147 |
| 310-1-2-F-12D-LCBMA (Fail Safe) | \$1,147 |
| 310-1-2-F-24D-LCBMA (Fail Safe) | \$1,147 |

310-1-3 Electric Strike Bodies

| MODEL & KEEPER | (PK) |
|---------------------------------|---------|
| 310-1-3-12D | \$890 |
| 310-1-3-24D | \$890 |
| 310-1-3-F-12D (Fail Safe) | \$890 |
| 310-1-3-F-24D (Fail Safe) | \$890 |
| 310-1-3-12D-LCBMA | \$1,147 |
| 310-1-3-24D-LCBMA | \$1,147 |
| 310-1-3-F-12D-LCBMA (Fail Safe) | \$1,147 |
| 310-1-3-F-24D-LCBMA (Fail Safe) | \$1,147 |

310-1-30 Electric Strike Bodies

| MODEL & KEEPER | KEEPER |
|----------------------------------|---------|
| 310-1-30-12D | \$890 |
| 310-1-30-24D | \$890 |
| 310-1-30-F-12D (Fail Safe) | \$890 |
| 310-1-30-F-24D (Fail Safe) | \$890 |
| 310-1-30-12D-LCBMA | \$1,147 |
| 310-1-30-24D-LCBMA | \$1,147 |
| 310-1-30-F-12D-LCBMA (Fail Safe) | \$1,147 |
| 310-1-30-F-24D-LCBMA (Fail Safe) | \$1,147 |

HES Folger Adam 310-1-X continued on next page.

**HES
Folger Adam
310-1-X
Cont.**

How to Order *Specify quantity and the following information. Order related products separately.*

| PREFIX | SERIES | X - MODEL | KEEPER STYLE | FAIL SAFE/SECURE | VOLTAGE | OPTION(S) |
|-------------------------|--------------------------|--|--|--------------------------------|-------------|---|
| SB | - 310-1 | - 1 | (PK) | - F | - 24D | - LCBMA |
| STRIKE BODY ONLY | | | | | | |
| SB Strike Body | 310-1-X Strike Body Only | 1 For use with vertical rod spacing between 4" and 4-3/4" | (PK) For use with Pullman style latchbolts | (blank) Fail Secure (Standard) | 12D 12 Volt | LCBMA Latchbolt & locking cam monitor with auxiliary switch |
| | | 2 For use with vertical rod spacing between 4-5/8" and 5-3/8" | | F Fail Safe | 24D 24 Volt | |
| | | 3 For use with vertical rod spacing between 5-1/4" and 6" | | | | |
| | | 30 For use with vertical rod spacing between 2-5/8" and 3-3/8" | | | | |

**HES
Folger Adam
712, 712-75**



712 Complete Pacs for Latchbolt Locks

| MODELS & FINISHES | 630 | 605 | 606 | 612 | 613 | 629 |
|------------------------------|-------|-------|-------|-------|-------|-------|
| 712-12D | \$622 | \$724 | \$696 | \$696 | \$659 | \$696 |
| 712-24D | \$622 | \$724 | \$696 | \$696 | \$659 | \$696 |
| 712-F-12D (Fail Safe) | \$622 | \$724 | \$696 | \$696 | \$659 | \$696 |
| 712-F-24D (Fail Safe) | \$622 | \$724 | \$696 | \$696 | \$659 | \$696 |
| 712-12D-LBMLCM | \$754 | \$856 | \$828 | \$828 | \$791 | \$828 |
| 712-24D-LBMLCM | \$754 | \$856 | \$828 | \$828 | \$791 | \$828 |
| 712-F-12D-LBMLCM (Fail Safe) | \$754 | \$856 | \$828 | \$828 | \$791 | \$828 |
| 712-F-24D-LBMLCM (Fail Safe) | \$754 | \$856 | \$828 | \$828 | \$791 | \$828 |

Hollow metal frame applications with up to 5/8" throw latchbolts.

712 Faceplates

| OPTION | 630 | 605 | 606 | 612 | 613 | 629 |
|-------------|-------|-------|-------|-------|-------|-------|
| FP: 712/732 | \$134 | \$236 | \$208 | \$208 | \$172 | \$208 |

712-75 Complete Pacs for Latchbolt Locks

| MODELS & FINISHES | 630 | 605 | 606 | 612 | 613 | 629 |
|---------------------------------|-------|-------|-------|-------|-------|-------|
| 712-75-12D | \$647 | \$750 | \$718 | \$718 | \$686 | \$718 |
| 712-75-24D | \$647 | \$750 | \$718 | \$718 | \$686 | \$718 |
| 712-75-F-12D (Fail Safe) | \$647 | \$750 | \$718 | \$718 | \$686 | \$718 |
| 712-75-F-24D (Fail Safe) | \$647 | \$750 | \$718 | \$718 | \$686 | \$718 |
| 712-75-12D-LBMLCM | \$779 | \$882 | \$850 | \$850 | \$818 | \$850 |
| 712-75-24D-LBMLCM | \$779 | \$882 | \$850 | \$850 | \$818 | \$850 |
| 712-75-F-12D-LBMLCM (Fail Safe) | \$779 | \$882 | \$850 | \$850 | \$818 | \$850 |
| 712-75-F-24D-LBMLCM (Fail Safe) | \$779 | \$882 | \$850 | \$850 | \$818 | \$850 |

Hollow metal frame applications with up to 3/4" throw latchbolts.

712-75 Faceplates

| OPTION | 630 | 605 | 606 | 612 | 613 | 629 |
|-------------------|-------|-------|-------|-------|-------|-------|
| FP: 712-75/732-75 | \$159 | \$262 | \$230 | \$230 | \$199 | \$230 |

700 & 742 Series | LBMLCM: When using LBMLCM with a SARGENT 78/8200 Series or BEST 40 Series Mortise Lock, a 1/2" or 5/8" keeper latchbolt detection will be dependent on the door gap in order to ensure functionality. Consult customer support regarding use with other manufacturers.

712-75, 732-75 and 742-75: The LBMLCM option is compatible with SARGENT 78/8200 Series or BEST 40 Series 3/4" throw mortise lock latchbolts in hollow metal and wood frame applications. Monitoring capabilities are dependent on a maximum 1/8" door gap in order to ensure functionality. Consult customer support regarding use with other manufacturers.

HES Folger Adam 732, 732-75

732 Complete Pacs for Latchbolt Locks

| MODELS & FINISHES | 630 | 605 | 606 | 612 | 613 | 629 |
|------------------------------|-------|-------|-------|-------|-------|-------|
| 732-12D | \$622 | \$724 | \$696 | \$696 | \$659 | \$696 |
| 732-24D | \$622 | \$724 | \$696 | \$696 | \$659 | \$696 |
| 732-F-12D (Fail Safe) | \$622 | \$724 | \$696 | \$696 | \$659 | \$696 |
| 732-F-24D (Fail Safe) | \$622 | \$724 | \$696 | \$696 | \$659 | \$696 |
| 732-12D-LBMLCM | \$754 | \$856 | \$828 | \$828 | \$791 | \$828 |
| 732-24D-LBMLCM | \$754 | \$856 | \$828 | \$828 | \$791 | \$828 |
| 732-F-12D-LBMLCM (Fail Safe) | \$754 | \$856 | \$828 | \$828 | \$791 | \$828 |
| 732-F-24D-LBMLCM (Fail Safe) | \$754 | \$856 | \$828 | \$828 | \$791 | \$828 |

Wood frame applications with up to 5/8" throw latchbolts.

732 Faceplates

| OPTION | 630 | 605 | 606 | 612 | 613 | 629 |
|-------------|-------|-------|-------|-------|-------|-------|
| FP: 712/732 | \$134 | \$236 | \$208 | \$208 | \$172 | \$208 |

732-75 Complete Pacs for Latchbolt Locks

| MODELS & FINISHES | 630 | 605 | 606 | 612 | 613 | 629 |
|---------------------------------|-------|-------|-------|-------|-------|-------|
| 732-75-12D | \$647 | \$750 | \$718 | \$718 | \$686 | \$718 |
| 732-75-24D | \$647 | \$750 | \$718 | \$718 | \$686 | \$718 |
| 732-75-F-12D (Fail Safe) | \$647 | \$750 | \$718 | \$718 | \$686 | \$718 |
| 732-75-F-24D (Fail Safe) | \$647 | \$750 | \$718 | \$718 | \$686 | \$718 |
| 732-75-12D-LBMLCM | \$779 | \$882 | \$850 | \$850 | \$818 | \$850 |
| 732-75-24D-LBMLCM | \$779 | \$882 | \$850 | \$850 | \$818 | \$850 |
| 732-75-F-12D-LBMLCM (Fail Safe) | \$779 | \$882 | \$850 | \$850 | \$818 | \$850 |
| 732-75-F-24D-LBMLCM (Fail Safe) | \$779 | \$882 | \$850 | \$850 | \$818 | \$850 |

Wood frame applications with up to 3/4" throw latchbolts.

732-75 Faceplates

| OPTION | 630 | 605 | 606 | 612 | 613 | 629 |
|-------------------|-------|-------|-------|-------|-------|-------|
| FP: 712-75/732-75 | \$159 | \$262 | \$230 | \$230 | \$199 | \$230 |

700 & 742 Series | LBMLCM: When using LBMLCM with a SARGENT 78/8200 Series or BEST 40 Series Mortise Lock, a 1/2" or 5/8" keeper latchbolt detection will be dependent on the door gap in order to ensure functionality. Consult customer support regarding use with other manufacturers.

712-75, 732-75 and 742-75: The LBMLCM option is compatible with SARGENT 78/8200 Series or BEST 40 Series 3/4" throw mortise lock latchbolts in hollow metal and wood frame applications. Monitoring capabilities are dependent on a maximum 1/8" door gap in order to ensure functionality. Consult customer support regarding use with other manufacturers.

**HES
Folger Adam
712, 712-75,
732, 732-75**



How to Order *Specify quantity and the following information. Order related products separately.*

| SERIES | FAIL SAFE/SECURE | VOLTAGE | FINISH | OPTION(S) |
|--|--------------------------------|-------------|--------------------------------------|--|
| 712 | - F | - 24D | - 630 | - LBMLCM |
| COMPLETE PACS | | | | |
| 712 1/2" PK keeper standard; Hollow metal frames, for up to a 5/8" throw latchbolt | (blank) Fail Secure (Standard) | 12D 12 Volt | 605 Bright Brass 606 Satin Brass | LBMLCM Latchbolt & locking cam monitor |
| 712-75 3/4" PK keeper standard; Hollow metal frames, for up to a 3/4" throw latchbolt without deadbolt | F Fail Safe | 24D 24 Volt | 612 Satin Bronze 613 Bronze Toned | |
| 732 PK keeper standard; Wood frames, for up to a 5/8" throw latchbolt | | | 629 Bright Stainless Steel | |
| 732-75 3/4" PK keeper standard; Wood frames, for up to a 3/4" throw latchbolt without deadbolt | | | 630 Satin Stainless Steel | |

How to Order *Specify quantity and the following information. Order related products separately.*

| PREFIX | SERIES | FINISH |
|-----------------------|--|----------------------------|
| FP | - 732-75 | - 613 |
| FACEPLATE ONLY | | |
| FP Faceplate | 712 1/2" PK keeper standard; Hollow metal frames, for up to a 5/8" throw latchbolt | 605 Bright Brass |
| | 712-75 3/4" PK keeper standard; Hollow metal frames, for up to a 3/4" throw latchbolt without deadbolt | 606 Satin Brass |
| | 732 PK keeper standard; Wood frames, for up to a 5/8" throw latchbolt | 612 Satin Bronze |
| | 732-75 3/4" PK keeper standard; Wood frames, for up to a 3/4" throw latchbolt without deadbolt | 613 Bronze Toned |
| | | 629 Bright Stainless Steel |
| | | 630 Satin Stainless Steel |

700 & 742 Series | LBMLCM: When using LBMLCM with a SARGENT 78/8200 Series or BEST 40 Series Mortise Lock, a 1/2" or 5/8" keeper latchbolt detection will be dependent on the door gap in order to ensure functionality. Consult customer support regarding use with other manufacturers.

712-75, 732-75 and 742-75: The LBMLCM option is compatible with SARGENT 78/8200 Series or BEST 40 Series 3/4" throw mortise lock latchbolts in hollow metal and wood frame applications. Monitoring capabilities are dependent on a maximum 1/8" door gap in order to ensure functionality. Consult customer support regarding use with other manufacturers.

**HES
Folger Adam
SB710,
SB710-75**

SB710 Electric Strike Bodies

| MODEL & KEEPER | (1/2) |
|------------------------------|-------|
| 710-12D | \$488 |
| 710-24D | \$488 |
| 710-F-12D (Fail Safe) | \$488 |
| 710-F-24D (Fail Safe) | \$488 |
| 710-12D-LBMLCM | \$620 |
| 710-24D-LBMLCM | \$620 |
| 710-F-12D-LBMLCM (Fail Safe) | \$620 |
| 710-F-24D-LBMLCM (Fail Safe) | \$620 |

SB710-75 Electric Strike Bodies

| MODEL & KEEPER | (3/4) |
|---------------------------------|-------|
| 710-75-12D | \$488 |
| 710-75-24D | \$488 |
| 710-75-F-12D (Fail Safe) | \$488 |
| 710-75-F-24D (Fail Safe) | \$488 |
| 710-75-12D-LBMLCM | \$620 |
| 710-75-24D-LBMLCM | \$620 |
| 710-75-F-12D-LBMLCM (Fail Safe) | \$620 |
| 710-75-F-24D-LBMLCM (Fail Safe) | \$620 |

HES Folger Adam SB710, SB710-75 continued on next page.

HES
Folger Adam
SB710,
SB710-75,
SB730,
SB730-75



SB730 Electric Strike Bodies

| MODEL & KEEPER | (1/2) |
|------------------------------|-------|
| 730-12D | \$488 |
| 730-24D | \$488 |
| 730-F-12D (Fail Safe) | \$488 |
| 730-F-24D (Fail Safe) | \$488 |
| 730-12D-LBMLCM | \$620 |
| 730-24D-LBMLCM | \$620 |
| 730-F-12D-LBMLCM (Fail Safe) | \$620 |
| 730-F-24D-LBMLCM (Fail Safe) | \$620 |

SB730-75 Electric Strike Bodies

| MODEL & KEEPER | (3/4) |
|---------------------------------|-------|
| 730-75-12D | \$488 |
| 730-75-24D | \$488 |
| 730-75-F-12D (Fail Safe) | \$488 |
| 730-75-F-24D (Fail Safe) | \$488 |
| 730-75-12D-LBMLCM | \$620 |
| 730-75-24D-LBMLCM | \$620 |
| 730-75-F-12D-LBMLCM (Fail Safe) | \$620 |
| 730-75-F-24D-LBMLCM (Fail Safe) | \$620 |

How to Order

Specify quantity and the following information. Order related products separately.

| PREFIX | STRIKE SERIES | KEEPER STYLE | FAIL SAFE/SECURE | VOLTAGE | OPTION(S) |
|------------------|---|-----------------|--------------------------------|-------------|--|
| SB | - 710 | (3/4) | - F | - 24D | -LCBMA |
| STRIKE BODY ONLY | | | | | |
| SB Strike Body | 710 Hollow metal frames, for up to a 5/8" throw latchbolt | 1/2 1/2" Keeper | (blank) Fail Secure (Standard) | 12D 12 Volt | LBMLCM Latchbolt & locking cam monitor |
| | 710-75 Hollow metal frames, for up to a 3/4" throw latchbolt without deadbolt | 3/4 3/4" Keeper | F Fail Safe | 24D 24 Volt | |
| | 730 Wood frames, for up to a 5/8" throw latchbolt | | | | |
| | 730-75 Wood frames, for up to a 3/4" throw latchbolt without deadbolt | | | | |

INSTALLATION NOTE: Double-door models are available with four different center-to-center dimensions between latchbolt keepers. Keepers are wide enough to compensate for vertical rod exit bolts, which may be as much as 3/8" (10 mm) off center-to-center dimension, either way.

When using an electric strike in conjunction with a vertical rod exit device, it is necessary that:

1. The bottom rod of the exit device be removed or made inoperative
2. The latchbolt of the exit device be the "Pullman" or beveled type
3. The latchbolt be free-latching and remain projected while the door is open. Mechanisms that hold the latchbolt retracted while the door is open, and automatically release it when the door is closed, must be removed or made inoperative.

**HES
Folger Adam
742-75**



Complete Pacs for Latchbolt Locks

| MODELS & FINISHES | 630 | 605 | 606 | 612 | 613 | 629 |
|---------------------------------|-------|-------|-------|-------|-------|-------|
| 742-75-12D | \$672 | \$776 | \$745 | \$745 | \$708 | \$745 |
| 742-75-24D | \$672 | \$776 | \$745 | \$745 | \$708 | \$745 |
| 742-75-F-12D (Fail Safe) | \$672 | \$776 | \$745 | \$745 | \$708 | \$745 |
| 742-75-F-24D (Fail Safe) | \$672 | \$776 | \$745 | \$745 | \$708 | \$745 |
| 742-75-12D-LBMLCM | \$803 | \$907 | \$876 | \$876 | \$839 | \$876 |
| 742-75-24D-LBMLCM | \$803 | \$907 | \$876 | \$876 | \$839 | \$876 |
| 742-75-F-12D-LBMLCM (Fail Safe) | \$803 | \$907 | \$876 | \$876 | \$839 | \$876 |
| 742-75-F-24D-LBMLCM (Fail Safe) | \$803 | \$907 | \$876 | \$876 | \$839 | \$876 |

Hollow metal frame applications with up to 3/4" throw latchbolts.

Faceplates

| OPTION | 630 | 605 | 606 | 612 | 613 | 629 |
|------------|-------|-------|-------|-------|-------|-------|
| FP: 742-75 | \$148 | \$252 | \$220 | \$220 | \$184 | \$220 |

How to Order *Specify quantity and the following information. Order related products separately.*

| SERIES | FAIL SAFE/SECURE | VOLTAGE | FINISH | OPTION(S) |
|---|--------------------------------|-------------|----------------------------|--|
| 742-75 | - F | - 12D | - 613 | - LBMLCM |
| COMPLETE PACS | | | | |
| 742-75 Hollow metal frames, for up to a 3/4" throw latchbolt without deadbolt | (blank) Fail Secure (Standard) | 12D 12 Volt | 605 Bright Brass | LBMLCM Latchbolt & locking cam monitor |
| | F Fail Safe | 24D 24 Volt | 606 Satin Brass | |
| | | | 612 Satin Bronze | |
| | | | 613 Bronze Toned | |
| | | | 629 Bright Stainless Steel | |
| | | | 630 Satin Stainless Steel | |

How to Order *Specify quantity and the following information. Order related products separately.*

| PREFIX | SERIES | FINISH |
|-----------------------|---|----------------------------|
| FP | - 742-75 | - 630 |
| FACEPLATE ONLY | | |
| FP Faceplate | 742-75 Hollow metal frames, for up to a 3/4" throw latchbolt without deadbolt | 605 Bright Brass |
| | | 606 Satin Brass |
| | | 612 Satin Bronze |
| | | 613 Bronze Toned |
| | | 629 Bright Stainless Steel |
| | | 630 Satin Stainless Steel |

700 & 742 Series | LBMLCM: When using LBMLCM with a SARGENT 78/8200 Series or BEST 40 Series Mortise Lock, a 1/2" or 5/8" keeper latchbolt detection will be dependent on the door gap in order to ensure functionality. Consult customer support regarding use with other manufacturers.
712-75, 732-75 and 742-75: The LBMLCM option is compatible with SARGENT 78/8200 Series or BEST 40 Series 3/4" throw mortise lock latchbolts in hollow metal and wood frame applications. Monitoring capabilities are dependent on a maximum 1/8" door gap in order to ensure functionality. Consult customer support regarding use with other manufacturers.

HES
Folger Adam
SB740-75



Electric Strike Bodies

| MODEL & KEEPER | (3/4) |
|---------------------------------|-------|
| 740-75-12D | \$524 |
| 740-75-24D | \$524 |
| 740-75-F-12D (Fail Safe) | \$524 |
| 740-75-F-24D (Fail Safe) | \$524 |
| 740-75-12D-LBMLCM | \$655 |
| 740-75-24D-LBMLCM | \$655 |
| 740-75-F-12D-LBMLCM (Fail Safe) | \$655 |
| 740-75-F-24D-LBMLCM (Fail Safe) | \$655 |

How to Order *Specify quantity and the following information. Order related products separately.*

| PREFIX | SERIES | KEEPER STYLE | FAIL SAFE/SECURE | VOLTAGE | OPTION(S) |
|-------------------------|--------|-----------------|--------------------------------|-------------|--|
| SB | 740-75 | (3/4) | — | — 24D | — |
| STRIKE BODY ONLY | | | | | |
| SB Strike Body | 740-75 | 1/2 1/2" Keeper | (blank) Fail Secure (Standard) | 12D 12 Volt | LBMLCM Latchbolt & locking cam monitor |
| | | 3/4 3/4" Keeper | F Fail Safe | 24D 24 Volt | |

700 & 742 Series | LBMLCM: When using LBMLCM with a SARGENT 78/8200 Series or BEST 40 Series Mortise Lock, a 1/2" or 5/8" keeper latchbolt detection will be dependent on the door gap in order to ensure functionality. Consult customer support regarding use with other manufacturers.

712-75, 732-75 and 742-75: The LBMLCM option is compatible with SARGENT 78/8200 Series or BEST 40 Series 3/4" throw mortise lock latchbolts in hollow metal and wood frame applications. Monitoring capabilities are dependent on a maximum 1/8" door gap in order to ensure functionality. Consult customer support regarding use with other manufacturers.

HES Electric Strike Accessories

| ACCESSORY | DESCRIPTION | PRICE |
|--|---|-------|
| HESCUT-MTK Metal Template Kit | <ul style="list-style-type: none"> For installing the 1006, 1500, 1600, 4500, 5000, 5200, 7000 and 7501 electric strikes (4-7/8" ANSI jamb preparation only) | \$75 |
| 9000-MTK Metal Template Kit | <ul style="list-style-type: none"> For installing the 9400, 9500, 9600, 9700 and 9800 electric strikes | \$75 |
| SMB Surface Mounting Box | <ul style="list-style-type: none"> Installs on inactive door of pair of doors to accommodate rim exit devices To be used with the 7000 (783S and 789S), 9400, 9500, 9600, 9700 and 9800 Electric Strikes | \$209 |
| 150 Strike latch guard | <ul style="list-style-type: none"> Stainless steel Installed at the edge of the door to cover the lock and electric strike Available in 626 finish only | \$87 |
| 152 Universal mounting tab | <ul style="list-style-type: none"> Mount inside hollow metal and aluminum jambs | \$25 |
| 157 Torx® screws | <ul style="list-style-type: none"> Two (2) 12-24 UNC x 3/4" FH Tamper-Resistant Pin-in-Torx screws | \$13 |
| 157D Torx® security bit | <ul style="list-style-type: none"> Tamper-Resistant Torx R20 insert bit | \$41 |
| 310-2-3 Astragal strike latch guard | <ul style="list-style-type: none"> Designed to prevent tampering with the latchbolt as well as the latchbolt keeper Prevents one door from being open before the other | \$201 |
| 2001-1 Wire-in bridge rectifier | <ul style="list-style-type: none"> Converts AC to unfiltered DC Rated 35 V, 2 Amp Not recommended for 1006 Electric Strike | \$38 |
| 2001M Plug-in bridge rectifier | <ul style="list-style-type: none"> Converts AC to unfiltered DC Rated 35 V, 1 Amp Includes MOV and self-resettable fuse Not recommended for 1006 Electric Strike | \$65 |
| 2004M Electrolynx® adapter | <ul style="list-style-type: none"> Adapter between existing HES electric strikes and Electrolynx connectors | \$40 |
| 2005M3 SMART Pac® III <i>Addition of Smart Pac III to any electric strike extends the 5-year no-fault warranty to a 10-year no-fault warranty.</i> | <ul style="list-style-type: none"> In-line power controller able to receive input voltages from 12–32V AC or DC Built-in bridge rectifier Reduces initial voltage by 25% to extend the life of the electric strike Includes built-in resettable fuse, MOV, voltage regulation and input voltage level indicating and unit status NOTE: For use with 1006, input voltage must be DC | \$99 |
| 2006M Plug-in buzzer | <ul style="list-style-type: none"> Audible operation indicator at 24VDC, 75db at 11-3/4" | \$49 |
| 2007M Plug-in pigtail connectors | <ul style="list-style-type: none"> With 4" wire leads | \$20 |

Electromagnetic Locks

Securitron M370, M380



600 lbs Intelligent Magnalocks®

| MODEL | DESCRIPTION | 628/ US28 | 313/ US20A | 335/ US19 | 605/ US03 | 606/ US04 | 612/ US10 |
|-----------|-------------------------------------|--------------|---------------|--------------|--------------|--------------|--------------|
| M370 | | \$439 | \$485 | \$485 | — | — | — |
| M380BD | BondSTAT, DPS | \$560 | \$595 | \$595 | \$659 | \$648 | \$648 |
| M380BDX | BondSTAT, DPS, REX | \$686 | \$731 | \$731 | \$797 | \$785 | \$785 |
| M380BDCX | BondSTAT, DPS, REX and BW Camera | \$1,127 | \$1,170 | \$1,170 | \$1,236 | \$1,225 | \$1,225 |
| M380BDC2X | BondSTAT, DPS, REX and Color Camera | \$1,127 | \$1,170 | \$1,170 | \$1,236 | \$1,225 | \$1,225 |
| M380BDC2 | BondSTAT, DPS and Color Camera | \$1,116 | \$1,159 | \$1,159 | \$1,224 | \$1,213 | \$1,213 |
| M380BDC | BondSTAT, DPS and BW Camera | \$1,116 | \$1,159 | \$1,159 | \$1,224 | \$1,213 | \$1,213 |

How to Order Specify quantity and the following information. Order related products separately.

| MODEL SERIES | MONITORING OPTIONS | ACCESSORY OPTIONS | FINISH OPTIONS |
|----------------|--|--|-----------------------|
| M380 | BD | X | - 630 |
| M370 (600 lbs) | (blank) No Monitoring | (blank) No Accessory Options | 313/US20 Satin Brown |
| M380 (600 lbs) | BD BondSTAT Monitor & Door Position Switch | C Black and White Analog Camera | 335/US19 Satin Black |
| | | C2 Color Analog Camera | 605/US03 Bright Brass |
| | | X PIR Request to Exit | 606/US4 Satin Brass |
| | | | 612/US10 Satin Bronze |
| | | 628/US28 Satin Aluminum Clear (standard) | |

Securitron M680E



EcoMag® 1,200 lbs Intelligent Magnalocks

| MODEL | DESCRIPTION | 605 | 606 | 612 | 613E | 628 | 629 | 630 | BSP |
|----------|--------------------|---------|---------|---------|---------|-------|---------|---------|---------|
| M680E | | — | — | — | — | \$638 | — | — | — |
| M680EBD | BondSTAT, DPS | \$816 | \$816 | \$816 | \$765 | \$714 | \$816 | \$816 | \$765 |
| M680EBDX | BondSTAT, DPS, REX | \$1,063 | \$1,063 | \$1,063 | \$1,012 | \$961 | \$1,063 | \$1,063 | \$1,012 |

How to Order Specify quantity and the following information. Order related products separately.

| MODEL SERIES | MONITORING OPTIONS | ACCESSORY OPTIONS | FINISH OPTIONS* |
|-------------------|--|------------------------------|---------------------------------|
| M680E | BD | X | 606 |
| M680E (1,200 lbs) | (blank) No Monitoring | (blank) No Accessory Options | 605 Bright Brass |
| | BD BondSTAT Monitor & Door Position Switch | X PIR Request to Exit | 606 Satin Brass |
| | | | 612 Satin Bronze |
| | | | 613E Dark Oxidized Satin Bronze |
| | | | 628 Satin Aluminum Clear |
| | | | 629 Bright Stainless Steel |
| | | | 630 Satin Stainless Steel |
| | | | BSP Black Suede Powder |

**Securitron
iMXDa**



Delayed Egress

| MODEL | DESCRIPTION | PRICE |
|-------------|--|---------|
| iMXDa | Dual Voltage | \$1,285 |
| iMXDa-CA15S | Dual Voltage, California, 15 sec | \$1,285 |
| iMXDa-CA30S | Dual Voltage, California, 30 sec | \$1,285 |
| iMXDaCH | Dual Voltage, Chicago | \$1,285 |
| iMXDaH | IMXDA for HUGS Infant Protection System | \$1,285 |
| iEXDa | Integrated Delay Egress External Initiate — Dual Voltage | \$1,129 |

Delayed Egress Magnalock Accessories

| MODEL | DESCRIPTION | PRICE |
|-----------|--|-------|
| BA-XDT-12 | 12 VDC Boxed Alarm & Door Label Exit Delay Timer | \$260 |
| BA-XDT-24 | 24 VDC Boxed Alarm & Door Label Exit Delay Timer | \$260 |
| EXD-1L | Label & Documentation Exit Delay System | \$23 |
| FA-XDT-12 | 12 VDC, Flush Mount with Alarm & Door Exit Delay Timer | \$260 |
| FA-XDT-24 | 24 VDC, Flush Mount with Alarm & Door Exit Delay Timer | \$260 |
| XDT-12 | 12 VDC Exit Delay Timer | \$171 |
| XDT-24 | 24 VDC Exit Delay Timer | \$171 |
| SB-MXD | Sex Bolt Kit — Door Movement | \$190 |

Additional Universal Magnetic Lock Mounting Brackets on Page 39.

How to Order *Specify quantity and the following information. Order related products separately.*

| MODEL SERIES | TIMING OPTIONS |
|-----------------------------|--|
| iMXDa | CH |
| iMXDa Integrated Initiation | (blank) Adjustable Timing |
| iEXDa External Initiation | -CA15S California Required 15s Timings |
| | -CA30S California Required 30s Timings |
| | CH Chicago Required Timings |
| | H HUGS Infant Protection Timings |

Securiton M32



600 lbs Durable Magnalocks

| MODEL | DESCRIPTION | NO MONITORING | B | D | BD |
|-------|--------------|---------------|-------|-------|-------|
| M32 | | \$379 | \$485 | \$449 | \$545 |
| M32F | Face Drilled | \$379 | \$485 | \$449 | \$545 |

How to Order Specify quantity and the following information. Order related products separately.

| MODEL SERIES | MONITORING METHOD | MONITORING OPTIONS | STRIKE PLATE OPTIONS |
|---------------|----------------------|--|-----------------------------------|
| M32 | | BD | -SS |
| M32 (600 lbs) | (blank) Direct Mount | (blank) No Monitoring | (blank) Standard Strike |
| | F Face Drilled | B BondSTAT Monitor | SS Split Strike (Add \$115)* |
| | | D Door Position Switch | SASM Shock Absorbing Strike Mount |
| | | BD BondSTAT Monitor & Door Position Switch | |

*D and B monitoring options not available with (SS) Split Strike option.

Securiton M62



1,200 lbs Durable Magnalocks

| MODEL | DESCRIPTION | NO MONITORING | B | D | BD |
|-------|----------------------------|---------------|-------|-------|-------|
| M62 | | \$485 | \$591 | \$555 | \$650 |
| M62F | Face Drilled | \$485 | \$591 | \$555 | \$650 |
| M62G | Gate Conduit | \$511 | \$616 | \$583 | \$677 |
| M62FG | Face Drilled, Gate Conduit | \$511 | \$616 | \$583 | \$677 |

How to Order Specify quantity and the following information. Order related products separately.

| MODEL SERIES | MONITORING METHOD | MONITORING OPTIONS | STRIKE PLATE OPTIONS |
|---------------|----------------------|--|-----------------------------------|
| M62 | | BD | -SS |
| M62 (600 lbs) | (blank) Direct Mount | (blank) No Monitoring | (blank) Standard Strike |
| | F Face Drilled | B BondSTAT Monitor | OS Offset Strike |
| | G Gate Conduit | D Door Position Switch | SS Split Strike (Add \$91)* |
| | | BD BondSTAT Monitor & Door Position Switch | SASM Shock Absorbing Strike Mount |

*D and B monitoring options not available with (SS) Split Strike option.

Securiton M82



1,800 lbs Durable Magnalocks

| MODEL | DESCRIPTION | B | BD |
|-------|----------------------------|-------|-------|
| M82 | | \$680 | \$741 |
| M82F | Face Drilled | \$680 | \$741 |
| M82G | Gate Conduit | \$708 | \$767 |
| M82FG | Face Drilled, Gate Conduit | \$708 | \$767 |

How to Order Specify quantity and the following information. Order related products separately.

| MODEL SERIES | MONITORING METHOD | MONITORING OPTIONS | STRIKE PLATE OPTIONS |
|---------------|----------------------|--|-----------------------------------|
| M82 | | BD | -SS |
| M82 (600 lbs) | (blank) Direct Mount | (blank) No Monitoring | (blank) Standard Strike |
| | F Face Drilled | B BondSTAT Monitor | OS Offset Strike |
| | G Gate Conduit | D Door Position Switch | SS Split Strike (Add \$116)* |
| | | BD BondSTAT Monitor & Door Position Switch | SASM Shock Absorbing Strike Mount |

*D and B monitoring options not available with (SS) Split Strike option.

M32, M62, M82 Accessories

Securitron M32, M62, M82



Durable Magnalocks Brackets

| MODEL | DESCRIPTION | BK | CL | SS |
|------------|--------------------------------------|-------|-------|-------|
| | Aluminum Frame Spacer Bracket | | | |
| ASB-32 | M32 | \$62 | \$46 | — |
| ASB-62 | M62 | \$62 | \$46 | — |
| ASB-82 | M82 | \$87 | \$75 | — |
| | Concrete/Wood Bracket | | | |
| CWB-32 | M32 | \$69 | \$59 | — |
| CWB-62 | M62 | \$62 | \$66 | — |
| CWB-82 | M82 | \$94 | \$82 | — |
| | Adjustable Z-Bracket | | | |
| ZA-32 62 | M32, M62 | \$176 | \$165 | \$186 |
| ZA-82 | M82 | \$213 | \$199 | \$223 |

Additional Universal Magnetic Lock Mounting Brackets on Page 36.

How to Order Specify quantity and the following information. Order related products separately.

| MODEL SERIES | SIZE | STRIKE PLATE OPTIONS |
|-----------------------------------|------|----------------------|
| ASB | -32 | BK |
| ASB Aluminum Frame Spacer Bracket | 32 | BK Black Anodized |
| CWB Concrete/Wood Bracket | 62 | CL Clear Anodized |
| ZA Adjustable Z-Bracket | 82 | SS Satin Stainless |

Lock Housing

| MODEL | DESCRIPTION | M32 | M62 | M82 |
|-------|---|-------|-------|-------|
| HHD | Double Horizontal | \$896 | \$896 | \$896 |
| HHSL | Single Horizontal with Left Hand Reverse | \$744 | \$744 | — |
| HHSR | Single Horizontal with Right Hand Reverse | \$744 | \$744 | — |
| HVD | Double Vertical | \$905 | \$905 | \$905 |

How to Order Specify quantity and the following information. Order related products separately.

| HOUSING TYPE | MAGNET TYPE | SPECIFY LENGTH (NOT USED IN PART NUMBER) |
|--------------|-------------|--|
| HHD | - 32 | (83") |
| HHD | 32 | HHD Max Length 96" |
| HHSL | 62 | HHSL Max Length 48" |
| HHSR | 82 | HHSR Max Length 48" |
| HVD | | HVD Max Length 96" |

M32, M62, M82 Dress Covers

| MODEL | DESCRIPTION | BK | BP | CL | SP |
|--------|--------------|------|-------|------|-------|
| DC-32 | M32 | \$45 | \$116 | \$45 | \$116 |
| DC-62 | M62 | \$45 | \$116 | \$45 | \$116 |
| DC-82 | M82 | \$50 | \$121 | \$50 | \$121 |
| DDC-32 | Double — M32 | \$73 | — | \$73 | — |
| DDC-62 | Double — M62 | \$73 | — | \$73 | — |

How to Order

Specify quantity and the following information. Order related products separately.

| DRESS COVER | MODEL | FINISH |
|---------------------------------------|-------|-----------------------|
| DC | - 32 | BK |
| DC Dress Cover | 32 | BK Black Anodized |
| DDC Double Dress Cover (32 & 62 only) | 62 | BP Brass Polished |
| | 82 | CL Clear Anodized |
| | | SP Stainless Polished |

M32, M62, M82 Additional Accessories

| MODEL | DESCRIPTION | PRICE |
|----------|--|-------|
| AOS-62 | M62, Offset Strike Plate | \$123 |
| AOS-62D | M62D, Offset Strike Plate | \$152 |
| AOS-82 | M82, Offset Strike Plate | \$161 |
| APS-32 | M32 Strike Plate | \$116 |
| APS-62 | M62 Strike Plate | \$129 |
| APS-82 | M82 Strike Plate | \$151 |
| ASS-32* | Strike Plate M32 — Split Set with Fasteners & Sex Bolt | \$160 |
| ASS-62* | Strike Plate M62 — Split Set with Fasteners & Sex Bolt | \$184 |
| ASS-82* | Strike Plate M82 — Split Set with Fasteners & Sex Bolt | \$205 |
| EASB-250 | Energy Absorbing Bolt — 1/4" Spacer Kit | \$45 |
| EASB-32 | M32 Energy Absorbing Sex Bolt | \$261 |
| EASB-62 | M62 Energy Absorbing Sex Bolt | \$350 |
| EASB-82 | M82 Energy Absorbing Sex Bolt | \$350 |
| SASM | Shock Absorbing Strike Mount for M32, M62, M82 | \$71 |
| SB-1 | Sex Bolt Replacement, Clear | \$12 |
| SB-1-03 | Sex Bolt Replacement, Polished Brass | \$32 |
| SB-1-10B | Sex Bolt Replacement, Oil-Rubbed Bronze | \$32 |
| TDK-1 | Thick Door Kit | \$29 |

*D and B monitoring options not available with (SS) Split Strike option.

Securitron M38



600 lbs Durable Magnalocks

| MODEL | DESCRIPTION | PRICE |
|---------|--------------------------------------|-------|
| M38 | 12/24 VDC | \$417 |
| M38D | 12/24 VDC, DPS | \$486 |
| M38DL | 12/24 VDC, DPS, LED | \$516 |
| M38DLS | 12/24 VDC, DPS, LED, Senstat | \$583 |
| M38DLST | 12/24 VDC, DPS, LED, Senstat, Tamper | \$634 |
| M38DS | 12/24 VDC, DPS, Senstat | \$555 |
| M38S | 12/24VDC, Senstat | \$487 |

Securitron M68



1,200 lbs Durable Magnalocks

| MODEL | DESCRIPTION | PRICE |
|---------|--------------------------------------|-------|
| M68 | 12/24 VDC | \$521 |
| M68D | 12/24 VDC, DPS | \$589 |
| M68DL | 12/24 VDC, DPS, LED | \$618 |
| M68DLS | 12/24 VDC, DPS, LED, Senstat | \$686 |
| M68DLST | 12/24 VDC, DPS, LED, Senstat, Tamper | \$737 |
| M68DS | 12/24 VDC, DPS, Senstat | \$657 |
| M68S | 12/24 VDC, Senstat | \$589 |

Accessories

| MODEL | DESCRIPTION | PRICE |
|---------|---------------------------------------|-------|
| DC-38SP | M38, Stainless Polished Dress Cover | \$116 |
| DC-68SP | M68, Stainless Polished Dress Cover | \$116 |
| TJ-38CL | M38, Clear Anodized In-Swing Door Kit | \$196 |
| TJ-68CL | M68, Clear Anodized In-Swing Door Kit | \$196 |

Additional Universal Magnetic Lock Mounting Brackets on Page 36.

How to Order Specify quantity and the following information. Order related products separately.

| MODEL SERIES | MONITORING OPTIONS |
|-----------------|------------------------|
| M38 | DLST |
| M38 (600lbs) | (blank) No Monitoring |
| M68 (1,200 lbs) | D Door Position Switch |
| | L LED Indicator |
| | S Senstat Monitor |
| | T Tamper Monitor |

Securitron Universal Magnalock Accessories

Header Extension Brackets

| MODEL & FINISH | DESCRIPTION | BK | CL |
|----------------|-----------------------------|------|------|
| HEB-1XX-8 | 1" x 1" x 8" | \$52 | \$43 |
| HEB-1XX-12 | 1" x 1" x 12" | \$61 | \$47 |
| HEB-2XX-8 | 2" x 2" x 8" | \$68 | \$57 |
| HEB-2XX-12 | 2" x 2" x 12" | \$70 | \$62 |
| HEB-3XX-8 | 3" x 3" x 8" | \$79 | \$70 |
| HEB-3XX-12 | 3" x 3" x 12" | \$88 | \$74 |
| HEB-3G | 3" x 3" x 8" for Glass Door | \$84 | — |

How to Order

Specify quantity and the following information. Order related products separately.

| MODE | SIZE | FINSH | SIZE |
|----------------------|-----------|-------------------|-----------|
| HEB | -1 | BK | -8 |
| HEB Header Extension | 1 1" x 1" | BK Black Anodized | 8 |
| | 2 2" x 2" | CL Clear Anodized | 12 |
| | 3 3" x 3" | | |

Universal Header Brackets

| MODEL & FINISH | DESCRIPTION | BK | CL |
|----------------|-------------|-------|-------|
| UHB-XX-8 | 8" | \$91 | \$78 |
| UHB-XX-12 | 12" | \$126 | \$111 |

How to Order

Specify quantity and the following information. Order related products separately.

| MODE | FINSH | SIZE |
|--------------------------------|-------------------|-----------|
| UHB | BK | -8 |
| UHB Universal Header Extension | BK Black Anodized | 8" |
| | CL Clear Anodized | 12" |

Stop Filler Plates

| MODEL & FINISH | DESCRIPTION | BK | CL |
|----------------|---------------------|------|------|
| SFP-1/2XX-8 | 1/2" x 1-1/4" x 8" | \$39 | \$28 |
| SFP-1/2XX-12 | 1/2" x 1-1/4" x 12" | \$42 | \$32 |
| SFP-1/4XX-8 | 1/4" x 1-1/4" x 8" | \$39 | \$29 |
| SFP-1/4XX-12 | 1/4" x 1-1/4" x 12" | \$42 | \$32 |
| SFP-3/8XX-8 | 3/8" x 1-1/4" x 8" | \$39 | \$29 |
| SFP-3/8XX-12 | 3/8" x 1-1/4" x 12" | \$42 | \$33 |
| SFP-5/8XX-8 | 5/8" x 1-1/4" x 8" | \$39 | \$31 |
| SFP-5/8XX-12 | 5/8" x 1-1/4" x 12" | \$44 | \$34 |

How to Order

Specify quantity and the following information. Order related products separately.

| MODE | SIZE | FINSH | SIZE |
|-----------------------|-------------|-------------------|-----------|
| SFP | -1/2 | BK | -8 |
| SFP Stop Filler Plate | 1/2" | BK Black Anodized | 8" |
| | 1/4" | CL Clear Anodized | 12" |
| | 3/8" | | |
| | 5/8" | | |

Additional Accessories

| MODEL | DESCRIPTION | PRICE |
|----------|---|-------|
| AKG | Adhesive Kit for GDB | \$173 |
| DCP-12X3 | Dress Cover Plate, 12" x 3" for larger strikes (M380, M680) | \$34 |
| GDB | Glass Door Bracket | \$71 |
| IK | Installation Kit | \$521 |

**Securitron
DM62**



Double 1,200 lbs Durable Magnalocks

| MODEL | DESCRIPTION | PRICE |
|--------|---------------------|---------|
| DM62 | 12/24 VDC | \$989 |
| DM62B | 12/24 VDC, MBS | \$1,205 |
| DM62D | 12/24 VDC, DPS | \$1,138 |
| DM62BD | 12/24 VDC, MBS, DPS | \$1,330 |

Accessories

| MODEL | DESCRIPTION | PRICE |
|--------------|---|-------|
| ASCWB-DM62CL | Alum 1-1/2" Spacer — Concrete/Wood Bracket, DM62, Clear | \$173 |

How to Order

Specify quantity and the following information. Order related products separately.

| MODEL SERIES | MONITORING OPTIONS | STRIKE PLATE OPTIONS |
|--------------|------------------------|-------------------------|
| DM62 | BD | - OS |
| DM62 | (blank) No Monitoring | (blank) Standard Strike |
| | B BondSTAT Monitor | OS Offset Strike |
| | D Door Position Switch | |

**Securitron
SAM, SAM2,
M34R**



Shear Aligning Magnalocks

| MODEL | DESCRIPTION | PRICE |
|-----------------------------|---|---------|
| Shear Magnalocks | | |
| SAM | 12/24 VDC, Self Aligning, 1,200 lbs | \$937 |
| SAMB | 12/24 VDC, Self Aligning, MBS, 1,200 lbs | \$1,021 |
| SAMD | 12/24 VDC, Self Aligning, DPS, 1,200 lbs | \$999 |
| SAMBD | 12/24 VDC, Self Aligning, MBS, DPS, 1,200 lbs | \$1,079 |
| M34 Magnalock | | |
| M34R | 12/24 VDC, Recessed, 500 lbs | \$412 |
| M34RB | 12/24 VDC, Recessed, MBS, 500 lbs | \$521 |
| M34RD | 12/24 VDC, Recessed, DPS, 500 lbs | \$487 |
| M34RBD | 12/24 VDC, Recessed, MBS, DPS, 500 lbs | \$582 |
| Mini Shear Magnalock | | |
| SAM2-24 | 24 VDC, 600 lbs | \$739 |
| SAM2C-24 | 24VDC, 600 lbs, Bond Sensor | \$701 |

SAM, M34R Accessories

| MODEL | DESCRIPTION | PRICE |
|---------|--------------------------------------|-------|
| SWB-03 | SAM Wood Bracket — Brass Polished | \$163 |
| SWB-10B | SAM Wood Bracket — Oil Rubbed Bronze | \$127 |
| SWB-26D | SAM Wood Bracket — Satin Stainless | \$96 |
| SMLS | Surface Mount Housing Lock — Shear | \$178 |
| SMSS | Surface Mount Housing Strike — Shear | \$172 |

How to Order

Specify quantity and the following information. Order related products separately.

| MODEL SERIES | MONITORING OPTIONS |
|-----------------|------------------------|
| SAM | BD |
| SAM (1,200 lbs) | (blank) No Monitoring |
| M34R (500 lbs) | B BondSTAT Monitor |
| | D Door Position Switch |

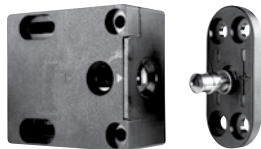
How to Order

Specify quantity and the following information. Order related products separately.

| MODEL SERIES | MONITORING OPTIONS | VOLTAGE |
|----------------|-----------------------|------------------------------|
| SAM2 | C | - 24 |
| SAM2 (600 lbs) | (blank) No Monitoring | 24V Operation only (default) |
| | C Bond Sensor | |

Cabinet Locks

HES 610



Multi-Purpose Electromechanical Lock

| MODEL | DESCRIPTION | PRICE |
|-------|-------------------------|-------|
| 610 | | \$120 |
| 610LM | Locked State Monitoring | \$167 |

How to Order

Specify quantity and the following information. Order related products separately.

| SERIES | OPTION(S) |
|------------------|----------------------------|
| 610 | – LM |
| 610 Cabinet Lock | (blank) No Monitoring |
| | LM Locked State Monitoring |

HES 660



Multi-Purpose Electromechanical Lock

| MODEL & KEEPER | NO OPTION | LBSM | LBSM – 20 PK | PRELOAD | LBSM-PRELOAD |
|----------------|-----------|-------|--------------|---------|--------------|
| 660-12V | \$148 | \$183 | \$3,660 | \$219 | \$250 |
| 660-24V | \$148 | \$183 | \$3,660 | \$219 | \$250 |

Accessories

| MODEL | DESCRIPTION | PRICE |
|-------|------------------|-------|
| KO | 660 Key Override | \$82 |

How to Order

Specify quantity and the following information. Order related products separately.

| SERIES | VOLTAGE | OPTION(S) |
|------------------|-------------|---|
| 660 | – 12V | – LBSM – Preload |
| 660 Cabinet Lock | 12V 12 Volt | (blank) No preload, no monitoring |
| | 24V 24 Volt | Preload Up to 15 lbs |
| | | LBSM Locked state monitoring |
| | | LBSM-20PK Locked state monitoring 20 pack |
| | | LBSM-Preload Locked state monitoring with Preload |

HES K20



Cabinet Lock

| MODEL | DESCRIPTION | PRICE |
|------------------|---|-------|
| K20 Cabinet Lock | Stand-alone 13.56 MHz RFID Cabinet Lock | \$175 |

HES KP20



Cabinet Lock

| MODEL | DESCRIPTION | PRICE |
|-------------------|---------------------------------|-------|
| KP20 Cabinet Lock | Stand-alone Keypad Cabinet Lock | \$155 |

HES K100



Aperio® Factory Paired Cabinet Lock with AH20 Wiegand Hub

| MODEL | DESCRIPTION | PRICE |
|----------------------|--|-------|
| K100-622H-SE-B2 | iCLASS SE reader, Wholesale Kit with 1:1 Hub, Black, Pinch | \$849 |
| K100-622H-PA-B2 | PROX, Wholesale Kit with 1:1 Hub, Black, Pinch | \$849 |
| K100-622-SE-B2-MOUNT | Mounted Demo, iCLASS, SE, Black, Pinch | \$999 |

Accessories

| MODEL | DESCRIPTION | PRICE |
|---------|----------------------------------|-------|
| 622-JSP | K100-622 Jump Start Battery Pack | \$45 |
| OBS-622 | K Series Open Back Strike Plate | \$26 |

How to Order *Specify quantity and the following information. Order related products separately.*

| SERIES | MODEL | CREDENTIAL TECHNOLOGY | COLOR | THUMBTURN |
|-------------------|----------------------|------------------------------|---------|-----------|
| K100 | - 622H | - PA | - B | - 2 |
| K100 Cabinet Lock | 622H Factory Paired* | PA HID® 125 kHz Prox | B Black | 2 Pinch |
| | | SE HID® 13.56 MHz iCLASS® SE | | |

*Kit includes integrated lock paired with Wiegand 1:1 wireless hub.

HES K100: The HES K100 cabinet lock is available as either a pre-paired lock and hub kit (no certification required) or as a field configurable component (requires Aperio® Certified Integrator certification). Pre-paired kits support limited features. Field configured devices are required in order to support all options. Visit www.IntelligentOpenings.com to learn more.

HES K200



Wiegand Cabinet Lock

| MODEL | DESCRIPTION | PRICE |
|-------------|--|-------|
| K200-622-B2 | Wiegand, MultiCLASS Reader, Black, Pinch | \$605 |

HES KS200



Server Cabinet Lock

| MODEL | DESCRIPTION | PRICE |
|------------|-------------------------------|-------|
| KS200-640* | Wiegand, multiCLASS SE, Black | \$555 |

*SFIC mechanical key override sold separately.

K200 & KS200 Accessories

| MODEL | DESCRIPTION | PRICE |
|------------|--|-------|
| OBS-622 | K Series Open Back Strike Plate | \$26 |
| CBL6-QC12 | Lock Side Interface Cable: 6 Foot, 12 Conductor and Molex both ends | \$48 |
| CBL12-QC12 | System Side Interface Cable: 12 Foot, 12 Conductor and Molex one end, pinned one end | \$68 |
| SFIC | MEDECO X4 (2 Keys—1 Control, 1 User) | \$87 |
| SFIC-BC | KS SFIC Blank, Black Plastic Core | \$6 |
| KS-DPS | Surface Mount DPS (external) | \$20 |
| KS-CAM45 | CAM: 45MM—5 | \$4 |
| KS-CAM38 | CAM: 38MM—1 | \$4 |
| CBL6-QC12 | Lock Side Interface Cable: 6 Foot, 12 Conductor and Molex both ends | \$48 |
| CBL12-QC12 | System Side Interface Cable: 12 Foot, 12 Conductor and Molex one end, pinned one end | \$68 |
| WT-1 | Wiegand Test Box with LED Indicators | \$400 |
| WT-2 | Wiegand Test Box with LCD Backlit Display with LED Indicators | \$500 |

**Securitron
MCL**



180 lbs Cabinet Magnalock

| MODEL | DESCRIPTION | PRICE |
|--------|-------------------|-------|
| MCL-24 | 24 Volts, 180 lbs | \$243 |

**Securitron
M32-SS**



600 lbs Cabinet Magnalock

| MODEL | DESCRIPTION | NO MONITORING | B |
|--------|-------------|---------------|-------|
| M32-SS | 600 lbs | \$494 | \$600 |

Specialty Locks

**Securitron
GL1**



Specialty Gate Locks

| MODEL | DESCRIPTION | PRICE |
|---------|----------------------------------|-------|
| GL1-FL | Standard Fail Locked, 12/24 VDC | \$375 |
| GL1-FLM | Monitored Fail Locked, 12/24 VDC | \$386 |
| GL1-FS | Standard Fail Safe, 12/24 VDC | \$375 |
| GL1-FSM | Monitored Fail Safe, 12/24 VDC | \$386 |

Accessories

| MODEL | DESCRIPTION | PRICE |
|-----------|---|-------|
| FMB9-4 | Post Shim Kit for Flex Mount Brackets — (Set of 4) | \$24 |
| FMK-SL | Flex Mount Kit for Sliding Gate | \$115 |
| FMK-SW | Flex Mount Kit for Swinging Gate | \$142 |
| GMC | Gate Lock Mortise Cylinder | \$40 |
| GMC-HS-BK | Gate Lock Mortise Cylinder, Medeco SFIC, Black | — |
| GMC-HS-CL | Gate Lock Mortise Cylinder, Medeco SFIC, Clear Anodized | — |

How to Order *Specify quantity and the following information. Order related products separately.*

| MODEL SERIES | LOCK FAIL STATE | MONITORING OPTIONS |
|--------------|------------------------------|-----------------------|
| GL1 | - FS | |
| GL1 | FL Fail Locked (Fail Secure) | (blank) No Monitoring |
| | FS Fail Safe | M Monitored |

Securitron MM15



Specialty Electromechanical Magnalock

| MODEL | DESCRIPTION | PRICE |
|---------|--|-------|
| MM15 | 12/24V, AC/DC | \$471 |
| MM15DT | 12/24V, AC/DC, DPS, Tamper | \$577 |
| MM15G | 12/24V, AC/DC, Gate Conduit | \$523 |
| MM15GDT | 12/24V, AC/DC, Gate Conduit, DPS, Tamper | \$606 |

How to Order Specify quantity and the following information. Order related products separately.

| MODEL SERIES | MOUNTING METHOD | MONITORING OPTIONS |
|--------------|--|--|
| MM15 | G | DT |
| MM15 | (blank) Direct Mount G Gate Conduit | (blank) No Monitoring DT Door Position Switch and Tamper Switch |

Brackets

| MODEL & FINISH | DESCRIPTION | BK | CL |
|----------------|-----------------------------|-------|-------|
| HEB-1XX-MM15 | 1" Header Extension Bracket | \$51 | \$40 |
| HEB-2XX-MM15 | 2" Header Extension Bracket | \$51 | \$40 |
| HEB-3XX-MM15 | 3" Header Extension Bracket | \$51 | \$40 |
| SFP-1/2XXMM15 | 1/2" Stop Filler Plate | \$43 | \$32 |
| SFP-3/8XXMM15 | 3/8" Stop Filler Plate | \$43 | \$32 |
| SFP-5/8XXMM15 | 5/8" Stop Filler Plate | \$45 | \$34 |
| Z-MM15XX | Z-Bracket | \$123 | \$110 |

Dress Cover

| MODEL & FINISH | DESCRIPTION | BK | BP | BS |
|----------------|-------------|------|-------|-------|
| DC-MM15XX | | \$41 | \$107 | \$116 |

Tamper Shield

| MODEL | DESCRIPTION | PRICE |
|---------|-----------------|-------|
| MM15-TS | Stainless Steel | \$42 |

How to Orders Specify quantity and the following information. Order related products separately.

| MODE | SIZE | FINISH |
|----------------------|-------------------------------------|--|
| HEB | -1 | BK |
| HEB Header Extension | 1 1" x 1" 2 2" x 2" 3 3" x 3" | BK Black Anodized CL Clear Anodized |

| SFP | -1/2 | BK |
|-----------------------|----------------------|--|
| SFP Stop Filler Plate | 1/2" 3/8" 5/8" | BK Black Anodized CL Clear Anodized |

| DC | BK |
|----------------|---|
| DC Dress Cover | BK Black BP Brass Polished BS Brass Satin |

Securitron M62FG-SASM



Specialty Electromechanical Magnalock

| MODEL | DESCRIPTION | PRICE |
|------------|--|-------|
| M62FG-SASM | Gate Conduit with Shock Absorbing Strike Mount | \$581 |

How to Order Specify quantity and the following information. Order related products separately.

| MODEL SERIES | MOUNTING METHOD | MONITORING OPTIONS |
|---------------|-------------------------------|-----------------------------------|
| M62 | FG | SASM |
| M62 1,200 lbs | FG Face drilled, gate conduit | SASM Shock Absorbing Strike Mount |

Keypads & Card Readers

Securiton DK-12



Stand Alone Keypad

| MODEL | DESCRIPTION | PRICE |
|-------|---|-------|
| DK-12 | Digital Keypad System with Illuminated keys — Single Gang | \$193 |

Accessories

| MODEL | DESCRIPTION | PRICE |
|-------|---|-------|
| WBB | Wall Mounted, Weatherized, Single Gang Box | \$38 |
| WCC | Wall Mounted Weather Cover, Single Gang Box | \$52 |

Securiton DK-16



Keypad System

| MODEL | DESCRIPTION | PRICE |
|--------|---|-------|
| DK-16 | Keypad and Controller — Indoor, Single Gang | \$409 |
| DK-16P | Keypad only — Indoor, Single Gang | \$202 |

Accessories

| MODEL | DESCRIPTION | PRICE |
|-------|---|-------|
| WBB | Wall Mounted, Weatherized, Single Gang Box | \$38 |
| WCC | Wall Mounted Weather Cover, Single Gang Box | \$52 |

Securiton DK-26



Keypad Systems

| MODEL | DESCRIPTION | BK | SS |
|----------|--------------------------------------|-------|-------|
| DK-26XX | Keypad and Controller — Narrow Stile | \$430 | \$420 |
| DK-26PXX | Keypad only — Narrow Stile | \$224 | \$213 |

How to Order Specify quantity and the following information. Order related products separately.

| MODEL SERIES | SPECIAL FEATURE | FINISH |
|--------------|-----------------|--------------------|
| DK-26 | P | BK |
| DK-26 Keypad | P Keypad only | BK Black Anodized |
| | | SS Stainless Steel |

Securiton DK-37



Wiegand Keypads

| MODEL | DESCRIPTION | BK | SS |
|----------|--------------|-------|-------|
| DK-37WXX | Narrow Stile | \$230 | \$220 |

How to Order Specify quantity and the following information. Order related products separately.

| MODEL SERIES | OUTPUT | FINISH |
|--------------|------------------|--------------------|
| DK-37 | W | BK |
| DK-37 Keypad | W Wiegand Output | BK Black Anodized |
| | | SS Stainless Steel |

Securitron DK-38



Wiegand Keypads

| MODEL | DESCRIPTION | PRICE |
|--------|-------------|-------|
| DK-38W | Single Gang | \$220 |

Accessories

| MODEL | DESCRIPTION | PRICE |
|-------|---|-------|
| WBB | Wall Mounted, Weatherized, Single Gang Box | \$38 |
| WCC | Wall Mounted Weather Cover, Single Gang Box | \$52 |

Securitron R100-1H



Aperio® Card Reader Factory Paired with Wiegand Hub

| MODEL | DESCRIPTION | PRICE |
|---------------|--|-------|
| R100-1H-SE | iCLASS SE, Aperio Wireless Reader with 1:1 Hub | \$749 |
| R100-1H-PA | Prox, Aperio Wireless Reader with 1:1 Hub | \$749 |
| R100-1-SE-MNT | Mounted Demo iCLASS SE | \$899 |

Accessories

| MODEL | DESCRIPTION | PRICE |
|----------|------------------------------|-------|
| R100-DCA | Dress Cover, Stainless Steel | \$30 |

How to Order Specify quantity and the following information. Order related products separately.

| SERIES | MODEL | CARD TECHNOLOGY |
|-----------------------------|--------------------|-----------------------------|
| R100 | -1H | - SE |
| R100 Aperio Wireless Reader | 1H Factory Paired* | SE HID 13:56 MHz iCLASS SE® |
| | | PA HID 125 MHz Prox® |

*Kit includes integrated lock paired with Wiegand 1:1 wireless hub

Securitron R100: The Securitron R100 card reader is available as either a pre-paired reader and hub kit (no certification required) or as a field configurable component (requires Aperio® Certified Integrator certification). Pre-paired kits support limited features. Field configured devices are required in order to support all options. Visit www.IntelligentOpenings.com to learn more.

Push Buttons & Egress Devices

Securitron XMS



Request to Exit Motion Sensor

| MODEL | DESCRIPTION | PRICE |
|-------|-------------|-------|
| XMS | | \$231 |

Securitron EEB



Emergency Exit Push Buttons

| MODEL | DESCRIPTION | PRICE |
|-------|--|-------|
| EEB2 | Momentary, SPST, Single Gang, Green/Red/Blue/Handicap, 30 Sec. Timer | \$147 |
| EEB3N | Momentary, SPST, Narrow, SPST, Green/Red, 30 Sec. Timer | \$147 |

Accessories

| MODEL | DESCRIPTION | PRICE |
|--------|---|-------|
| PB2-LK | Illumination Kit for PB2E, PB5E, EEB2, Series Push Button | \$30 |
| PB3-LK | Illumination Kit, Green/Red for PB3E/EEB3N Series | \$30 |
| WBB | Wall Mounted, Weatherized, Single Gang Box | \$38 |
| WCC | Wall Mounted Weather Cover, Single Gang Box | \$52 |

How to Order Specify quantity and the following information. Order related products separately.

| MODEL SERIES | LED LENS COLOR | MOUNTING METHOD |
|------------------|----------------------|---------------------|
| EEB | 3 | N |
| EEB Push Buttons | 2 Green/Red/Handicap | (blank) Single Gang |
| | 3 Green/Red | N Narrow Gang |

NOTE: Not every combination above is possible. Please contact the factory if you need a combination of features not listed on this page.

Securitron PB



Exit Push Buttons

| MODEL | DESCRIPTION | MOMENTARY | ALTERNATE |
|-------|--|-----------|-----------|
| PB | PB — Momentary, Illuminated, DPST, Single Gang, Green/Red Lens | \$163 | \$163 |

Accessories

| MODEL | DESCRIPTION | PRICE |
|-------|---|-------|
| WBB | Wall Mounted, Weatherized, Single Gang Box | \$38 |
| WCC | Wall Mounted Weather Cover, Single Gang Box | \$52 |

How to Order Specify quantity and the following information. Order related products separately.

| MODEL SERIES | SWITCH TYPE |
|----------------|--------------------------|
| PB | A |
| PB Push Button | (blank) Momentary Switch |
| | A Alternate Switch |

Securiton PB2



Exit Push Buttons

| MODEL | DESCRIPTION | PRICE |
|-------|--|-------|
| PB2 | 2" Button, Illuminated, Momentary, SPDT, Single Gang, Green/Red/Handicap | \$104 |
| PB22 | 2" Button, Illuminated, Momentary, DPDT, Single Gang, Green/Red/Handicap | \$163 |
| PB2E | 2" Button, Non-Illuminated, Momentary, SPDT, Single Gang, Green/Red/Handicap | \$74 |

Accessories

| MODEL | DESCRIPTION | PRICE |
|--------|--|-------|
| PB2-LK | 2" Button, Illumination Kit for PB2E, PB5E, EEB2, Series Push Button | \$30 |
| WBB | Wall Mounted, Weatherized, Single Gang Box | \$38 |
| WCC | Wall Mounted Weather Cover, Single Gang Box | \$52 |

How to Order Specify quantity and the following information. Order related products separately.

| MODEL SERIES | ILLUMINATION | SWITCH PULL/THROW |
|-----------------|---------------------|-----------------------------------|
| PB2 | | 2 |
| PB2 Push Button | (blank) Illuminated | (blank) Single Pole, Double Throw |
| | E Non-Illuminated | 2 Double Pole, Double Throw |

NOTE: Not every combination above is possible. Please contact the factory if you need a combination of features not listed on this page.

Securiton PB3



Push Buttons

| MODEL | DESCRIPTION | MOMENTARY | ALTERNATE |
|-------|---|-----------|-----------|
| PB3 | Illuminated, DPST/DPDT, Single Gang, Green/Red Lens | \$112 | \$112 |
| PB3E | Non-Illuminated, DPST/DPDT, Single Gang, Green/Red Lens | \$83 | \$83 |
| PB3N | Illuminated, DPST/DPDT, Narrow Stile, Green/Red Lens | \$112 | \$112 |
| PB3EN | Non-Illuminated, DPST/DPDT, Narrow Stile, Green/Red Lens | \$83 | \$83 |
| PB3ER | Non-Illuminated, Remote, DPST/DPDT, Surface Mount, Green/Red Lens | \$83 | \$83 |

Accessories

| MODEL | DESCRIPTION | PRICE |
|--------|---|-------|
| PB3-LK | Illumination Kit, Green/Red for PB3E/EEB3N Series | \$30 |
| WBB | Wall Mounted, Weatherized, Single Gang Box | \$38 |
| WCC | Wall Mounted Weather Cover, Single Gang Box | \$52 |

How to Order Specify quantity and the following information. Order related products separately.

| MODEL SERIES | ILLUMINATION | SWITCH TYPE | MOUNTING METHOD |
|-----------------|---------------------|--------------------------|-------------------------|
| PB3 | | | N |
| PB3 Push Button | (blank) Illuminated | (blank) Momentary Switch | (blank) Single Gang |
| | E Non-Illuminated | A Alternate Switch | 2 Double Gang |
| | | | N Narrow Gang |
| | | | R Remote, Surface Mount |

Securitron PB4L



Push Buttons

| MODEL | DESCRIPTION | MOMENTARY | ALTERNATE |
|---------|---|-----------|-----------|
| PB4L-2 | Green Illuminated Halo, DPDT, Single Gang, Green/Red LED | \$139 | \$139 |
| PB4LN-2 | Green Illuminated Halo, DPDT, Narrow Stile, Green/Red LED | \$139 | \$139 |

How to Order Specify quantity and the following information. Order related products separately.

| MODEL SERIES | SWITCH TYPE | MOUNTING METHOD | SWITCH PULL/THROW |
|------------------|--|--------------------------------------|------------------------------------|
| PB4L | A | N | - 2 |
| PB4L Push Button | (blank) Momentary Switch A Alternate Switch | (blank) Single Gang N Narrow Gang | 2 Double Pole, Double Throw Switch |

Securitron PB5



Push Buttons

| MODEL | DESCRIPTION | PRICE |
|-------|--|-------|
| PB5 | 2" Round Button, Illuminated, Momentary, SPDT, Single Gang, Green/Red/Handicap | \$128 |
| PB5E | 2" Round Button, Non-Illuminated, Momentary, SPDT, Single Gang, Green/Red/Handicap | \$98 |

Accessories

| MODEL | DESCRIPTION | PRICE |
|--------|---|-------|
| PB2-LK | Illumination Kit for PB2E, PB5E, EEB2, Series Push Button | \$30 |
| WBB | Wall Mounted, Weatherized, Single Gang Box | \$38 |
| WCC | Wall Mounted Weather Cover, Single Gang Box | \$52 |

How to Order Specify quantity and the following information. Order related products separately.

| MODEL SERIES | ILLUMINATION |
|-----------------|--|
| PB5 | E |
| PB5 Push Button | (blank) Illuminated E Non-Illuminated |

Securiton MK



Key Switches

| MODEL | DESCRIPTION | SPDT | DPDT |
|-------|--|-------|-------|
| MK | Momentary, Single Gang, Green/Red LED | \$139 | \$163 |
| MKA | Alternate, Single Gang, Green/Red LED | \$139 | \$163 |
| MKAN | Alternate, Narrow, Green/Red LED | \$139 | \$163 |
| MKN | Momentary, Narrow, Green/Red LED | \$139 | \$163 |
| MKPZ | Momentary, Double Gang, Green/Red LED, Audible | \$210 | — |
| MKAPZ | Alternate, Double Gang, Green/Red LED, Audible | \$210 | — |

Accessories

| MODEL | DESCRIPTION | PRICE |
|--------|--|-------|
| MKC-KD | Mortise Cylinder for MK Series – Keyed Differently | \$62 |
| MKC-KA | Mortise Cylinder for MK Series – Keyed Alike | \$62 |
| MKS | Momentary, Switch Only | \$35 |
| MKS2 | DPDT Momentary, Switch Only | \$59 |
| MKSA | Alternate, Switch Only | \$35 |
| MKSA2 | DPDT Alternate, Switch Only | \$59 |

How to Order Specify quantity and the following information. Order related products separately.

| MODEL SERIES | SWITCH TYPE | MOUNTING METHOD | SPECIAL FEATURE |
|-----------------------|--|---|---|
| MK | A | N | 2 |
| MK Mortise Key Switch | (blank) Momentary Switch A Alternate Switch | (blank) Switch Gang P Double Gang N Narrow Gang | Z Audible 2 DPDT—Double Pole, Double Throw |

Note: Not every combination above is possible. Please contact the factory if you need a combination of features not listed on this page.

Securiton KP-1



Key Switches

| MODEL | DESCRIPTION | PRICE |
|-------|-------------|-------|
| KP1 | Momentary | \$174 |
| KP1A | Alternate | \$174 |

How to Order Specify quantity and the following information. Order related products separately.

| MODEL SERIES | SWITCH TYPE |
|------------------------|--|
| KP1 | A |
| KP1 Tubular Key Switch | (blank) Momentary Switch A Alternate Switch |

Securitron WSS



Wave Sense Switch

| MODEL | DESCRIPTION | PRICE |
|--------|-----------------------------|-------|
| WSS-W1 | White Single Gang Faceplate | \$391 |
| WSS-W2 | White Double Gang Faceplate | \$391 |

Accessories

| MODEL | DESCRIPTION | PRICE |
|-------|---|-------|
| WBB | Wall Mounted, Weatherized, Single Gang Box | \$38 |
| WCC | Wall Mounted Weather Cover, Single Gang Box | \$52 |

How to Order

Specify quantity and the following information. Order related products separately.

| MODEL SERIES | FINISH | MOUNTING METHOD |
|-----------------------|---------|-----------------|
| WSS | - W | 1 |
| WSS Wave Sense Switch | W White | 1 Single Gang |
| | | 2 Double Gang |

Securitron SP-1



Capacitive Button

| MODEL | DESCRIPTION | PRICE |
|--------|---|-------|
| SP-1 | Touch Sense Plate | \$192 |
| SP-1L | Label Touch Plate [SP-1] | \$7 |
| SP-1LH | Label Touch Plate [SP-1] — Handicap Decal | \$7 |

How to Order

Specify quantity and the following information. Order related products separately.

| MODEL SERIES | LABEL |
|--|-----------------|
| SP-1 | |
| SP-1 Touch Sense Plate, Clear Anodized | L Touch To Exit |
| | LH Handicap |

Securitron DSB



Dual Sense Egress Bar

| MODEL & FINISH | DESCRIPTION | BK | CL |
|----------------|--|-------|-------|
| DSB | Non-Illuminated, 36" (Standard), 42", or 48" | \$519 | \$509 |
| DSB-XXI | Illuminated, 36" (Standard), 42", or 48" | \$688 | \$678 |
| EL-DSB | ElectroLynx, Illuminated, 36" Only | \$553 | \$547 |

Accessories

| MODEL & FINISH | DESCRIPTION | BK | CL |
|----------------|-----------------------------------|-------|------|
| TCP | Touch Bar Cover Plates — Set of 2 | \$91 | \$91 |
| MODEL | DESCRIPTION | PRICE | |
| DSB-TDM | Through Door Mounting Kit for DSB | \$15 | |

How to Order

Specify quantity and the following information. Order related products separately.

| CONNECTOR STYLE | MODEL SERIES | FINISH | ILLUMINATION | BAR LENGTH |
|---------------------------|--------------------|-------------------|-------------------------|---------------------------|
| EL | - DSB | - CL | I | 42 |
| (blank) No Connectors | DSB Dual Sense Bar | BK Black Anodized | (blank) Non Illuminated | (blank) 36" Standard Unit |
| EL ElectroLynx Connectors | | CL Clear Anodized | I Illuminated | 42 42" Length |
| | | | | 48 48" Length |

Note: Not every combination above is possible. Please contact the factory if you need a combination of features not listed on this page.

Securiton TSB



Touch Sense Egress Bar

| MODEL & SIZE | DESCRIPTION | BK | CL |
|--------------|---|-------|-------|
| TSB | 36" (Standard), 42", or 48" | \$472 | \$450 |
| TSB-BKT | Trailing Edge Timer [3 Sec.] — 36" only | \$472 | — |
| TSB-CLT | Trailing Edge Timer [3 Sec.] — 36" or 42" only | — | \$450 |
| EL-TSB | ElectroLynx — 36" (Standard), 42", or 48" | \$491 | \$469 |
| DTSB | Dummy with End Caps & Fasteners — 36" (Standard), 42", or 48" | \$254 | \$231 |

Accessories

| MODEL | DESCRIPTION | PRICE |
|---------|---|-------|
| TSB-TDM | Through Door Mounting Kit for TSB | \$15 |
| TCP-BK | Touch Bar Cover Plates — Set of 2, Black Anodized | \$91 |
| TCP-CL | Touch Bar Cover Plates — Set of 2, Clear Anodized | \$91 |

How to Order Specify quantity and the following information. Order related products separately.

| CONNECTOR STYLE | MODEL SERIES | FINISH | SPECIAL FEATURES | BAR LENGTH |
|---------------------------|---------------------|-------------------|-----------------------|---------------------------|
| EL | – TSB | – CL | T | – 42 |
| (blank) No Connectors | TSB Touch Sense Bar | BK Black Anodized | T Trailing Edge Timer | (blank) 36" Standard Unit |
| EL ElectroLynx Connectors | | CL Clear Anodized | | 42" |
| | | | | 48" |

NOTE: Not every combination above is possible. Please contact the factory if you need a combination of features not listed on this page.

Securiton EMB



Electromechanical Egress Bar

| MODEL & FINISH | DESCRIPTION | BK | CL |
|----------------|--|-------|-------|
| EMB | 36" (Standard), 42", or 48" | \$286 | \$273 |
| WEMB-BK | Weather Resistant, 36" (Standard), 42", or 48" | \$314 | \$302 |

Accessories

| MODEL | DESCRIPTION | BK | CL |
|-------|-----------------------------------|------|------|
| TCP | Touch Bar Cover Plates — Set of 2 | \$91 | \$91 |

How to Order Specify quantity and the following information. Order related products separately.

| MODEL SERIES | FINISH | BAR LENGTH |
|--|-------------------|---------------------------|
| EMB | – CL | – 48 |
| EMB Electromechanical Bar | BK Black Anodized | (blank) 36" Standard Unit |
| WEMB Weather Resistant Electromechanical Bar | CL Clear Anodized | 42" |
| | | 48" |

Securiton TSH



Touch Sense Handle

| MODEL | DESCRIPTION | BK | CL |
|--------|-------------------------|-------|-------|
| TSH | Push/Pull | \$463 | \$463 |
| EL-TSH | ElectroLynx — Push/Pull | \$491 | \$491 |

How to Order

Specify quantity and the following information. Order related products separately.

| CONNECTOR STYLE | MODEL SERIES | FINISH |
|---------------------------|------------------------|-------------------|
| EL | – TSH | – CL |
| (blank) No Connectors | TSH Touch Sense Handle | BK Black Anodized |
| EL ElectroLynx Connectors | | CL Clear Anodized |

Securiton EMH



Electromechanical Handle

| MODEL | DESCRIPTION | BK | CL |
|--------|-------------------------|-------|-------|
| EMH | Push/Pull | \$457 | \$457 |
| EL-EMH | ElectroLynx — Push/Pull | — | \$479 |

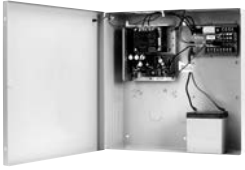
How to Order

Specify quantity and the following information. Order related products separately.

| CONNECTOR STYLE | MODEL SERIES | FINISH |
|---------------------------|------------------------------|-------------------|
| EL | – EMH | – CL |
| (blank) No Connectors | EMH Electromechanical Handle | BK Black Anodized |
| EL ElectroLynx Connectors | | CL Clear Anodized |

Power

Securitron BPS



Linear Power Supplies

| MODEL | DESCRIPTION | PRICE |
|-------------|-------------------------------|---------|
| BPS-12/24-1 | Dual Voltage 12/24 VDC, 1 AMP | \$294 |
| | 12 VDC | |
| BPS-12-1 | 1 Amp | \$237 |
| BPS-12-3 | 3 Amp | \$462 |
| BPS-12-45 | 4.5 Amp | \$746 |
| BPS-12-6 | 6 Amp | \$827 |
| BPS-12-9 | 9 Amp | \$1,000 |
| BPS-12-15 | 15 Amp | \$1,231 |
| | 24 VDC | |
| BPS-24-1 | 1 Amp | \$237 |
| BPS-24-2 | 2 Amp | \$462 |
| BPS-24-3 | 3 Amp | \$698 |
| BPS-24-4 | 4 Amp | \$827 |
| BPS-24-6 | 6 Amp | \$1,000 |
| BPS-24-10 | 10 Amp | \$1,231 |
| | 12 VDC Status Monitor | |
| BPSM-12-6 | 6 Amp | \$875 |
| BPSM-12-9 | 9 Amp | \$1,048 |
| BPSM-12-15 | 15 Amp | \$1,277 |
| | 24 VDC Status Monitor | |
| BPSM-24-4 | 4 Amp | \$875 |
| BPSM-24-6 | 6 Amp | \$1,048 |
| BPSM-24-10 | 10 Amp | \$1,277 |

How to Order Specify quantity and the following information. Order related products separately.

| MODEL SERIES | SWITCH TYPE | VOLTAGE | OUTPUT POWER |
|--------------|-----------------------|-------------|------------------|
| BPS | M | - 24 | -X |
| BPS | (blank) No Monitoring | 12 12VDC | X Output in Amps |
| | M PSM Monitoring | 24 24VDC | |

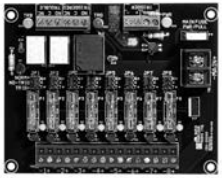
Securitron AQ Series



Power Supplies with Enclosures

| MODEL | DESCRIPTION | REPLACES | PRICE |
|---------|---------------------|----------|-------|
| AQD1 | 1 Amp, Dual Voltage | AQD3 | \$210 |
| AQD2 | 2 Amp, Dual Voltage | AQD3 | \$240 |
| AQD4 | 4 Amp, Dual Voltage | AQD5 | \$285 |
| AQD6 | 6 Amp, Dual Voltage | AQD6 | \$335 |
| AQS1210 | 10 Amp, 12 VDC | AQU128 | \$410 |
| AQS2410 | 10 Amp, 24 VDC | AQM20 | \$435 |
| AQS1216 | 16 Amp, 12 VDC | AQM20 | \$435 |

Securitron AQ Series



Distribution Boards

| MODEL | DESCRIPTION | PRICE |
|-----------|---|-------|
| PDB-1R | Fire Trigger / Relay Interface Board | \$40 |
| PDB-4F1 | 4 Output, 1A Glass Fuse | \$40 |
| PDB-4F2 | 4 Output, 2A Glass Fuse | \$40 |
| PDB-4C1 | 4 Output, 1A PTC | \$40 |
| PDB-4C2 | 4 Output, 2A PTC | \$40 |
| PDB-8F1 | 8 Output, 1A Glass Fuse | \$46 |
| PDB-8F2 | 8 Output, 2A Glass Fuse | \$46 |
| PDB-8C1 | 8 Output, 1A PTC | \$46 |
| PDB-8C2 | 8 Output, 2A PTC | \$46 |
| PDB-8F8R1 | 8 Relayed Outputs, 1A Glass Fuse | \$120 |
| PDB-8F8R2 | 8 Relayed Outputs, 2A Glass Fuse | \$120 |
| PDB-8C8R1 | 8 Relayed Outputs, 1A PTC | \$120 |
| PDB-8C8R2 | 8 Relayed Outputs, 2A PTC | \$120 |
| PDB-8C1R1 | 8 Output w/ Fire Trigger Relay, 1A PTC | \$94 |
| PDB-8C1R2 | 8 Output w/Fire Trigger Relay, 2A PTC | \$94 |
| PDB-8F1R1 | 8 Output w/ Fire Trigger Relay, 1A Glass Fuse | \$94 |
| PDB-8F1R2 | 8 Output w/Fire Trigger Relay, 2A Glass Fuse | \$94 |

Securitron AQ Series



Power Supply Boards Only

| MODEL | DESCRIPTION | REPLACES | PRICE |
|----------|---|----------|-------|
| AQD1B | 1 Amp, Dual Voltage Power Supply Board Only | AQD3B | \$130 |
| AQD2B | 2 Amp, Dual Voltage Power Supply Board Only | AQD3B | \$150 |
| AQD4B | 4 Amp, Dual Voltage Power Supply Board Only | AQD5B | \$225 |
| AQD6B | 6 Amp, Dual Voltage Power Supply Board Only | AQD6B | \$260 |
| AQS1210B | 10 Amp, 12 VDC Power Supply Board Only | AQU128B | \$350 |
| AQS2410B | 10 Amp, 24 VDC Power Supply Board Only | AQM20B | \$375 |
| AQS1216B | 16 Amp, 12 VDC Power Supply Board Only | AQM20B | \$375 |

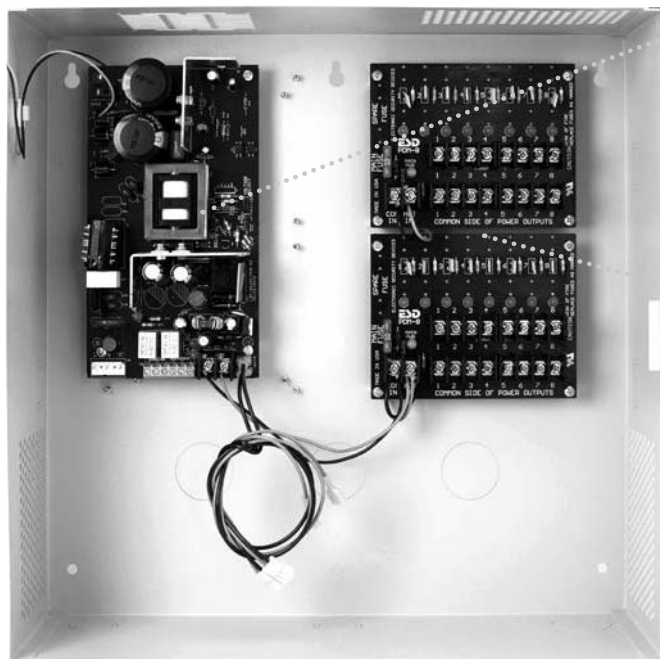
How to Order

Specify quantity and the following information. Order related products separately.

| MODEL SERIES | OUTPUT TYPE | VOLTAGE | OUTPUT POWER | ENCLOSURE STYLE | NUMBER OF OUTPUTS | FUSE TYPE | NUMBER OF RELAYS | RELAYS | FUSE SIZE |
|--------------|---------------------|----------------------|--------------|----------------------|---|--------------------|------------------|----------|-----------|
| AQ | D | Blank | 6 | - | 8 | F | 8 | R | 2 |
| AQ | D Dual Voltage * | Blank Dual Voltage * | 1 * | - In Enclosure | Blank One Output, No Distribution Board | | | | |
| | S Single Voltage ** | 12 12VDC ** | 2 * | B Circuit Board Only | 4 | F Glass + Fuses | 1 | R Relays | 1 1 Amp |
| | | 24 24VDC ** | 4 * | | 8 | C PTC + Polyswitch | 2 | | 2 2 Amp |
| | | | 6 * | | 12 | | 8 | | |
| | | | 10 ** | | 16 | | 9 | | |
| | | | 16 ** | | | | 16 | | |

* Dual Voltage Option Only. ** Single Voltage Option Only. † Fuse type and size must be the same for both distribution boards for standard ordering. For custom configurations, please contact the factory at 800.626.7590.

AQ Series Step by Step Configuration



*NOTE: Fuse type and size must be the same for both distribution boards for standard ordering. For custom configurations, please contact the factory at 800.626.7590.

1 Select One Power Supply with Enclosure

- AQD1
- AQD2
- AQD4
- AQD6
- AQS1210
- AQS2410
- AQS1216

2 Select Up to Two Power Distribution Boards*

- PDB-1R
- PDB-4C
- PDB-4F
- PDB-8C
- PDB-8F
- PDB-8C1R
- PDB-8F1R
- PDB-8C8R
- PDB-8F8R

3 Add Distribution Board Part Numbers

8F1R2 + 8F8R2 = 16F9R2
 * Include fuse size on end:
 2A Fuse = 16F9R2

4 Combine to Generate Final Part Number

Example: AQD6-16F9R2
 AQD6 + 8F8R2 + 8F1R2 = **AQD6-16F9R2**

Securitron EcoPower®



Low-Power-Draw Power Supply

| MODEL | DESCRIPTION | PRICE |
|---------|-------------------------------------|-------|
| EPS-05 | 0.5A, 2 Outputs for Low Power Locks | \$285 |
| EPS-05B | Power Supply Board Only | \$138 |

Accessories

| MODEL | DESCRIPTION | PRICE |
|---------|--------------------------|-------|
| B-12-08 | Battery — 12VDC — .8 Amp | \$61 |

How to Order Specify quantity and the following information. Order related products separately.

| MODEL SERIES | OUTPUT POWER | OPTION(S) |
|--------------|--------------|--|
| EPS | - 05 | B |
| EPS | 05 0.5 Amps | (blank) PS, enclosure, battery B Circuit Board Only |

Securiton BPSS



Solar Power Supplies

| MODEL | DESCRIPTION | PRICE |
|---------|---|-------|
| BPSS-10 | 12V with 10W Solar Panel and 9Ah Battery | \$788 |
| BPSS-20 | 12V with 20W Solar Panel and 18Ah Battery | \$893 |

BPSS Accessories

| MODEL | DESCRIPTION | PRICE |
|---------|---|-------|
| PMK-3 | Mounting Kit 3 in Pole for CCM Nema Enclosure | \$118 |
| SPK | Solar Panel Kit — 20 W | \$775 |
| SWK | High Wind Kit for 20 W Solar Panel | \$150 |
| B-12-9 | Battery — 12 VDC, 9Ah | \$150 |
| B-12-18 | Battery — 12 VDC, 18Ah | \$200 |

How to Order Specify quantity and the following information. Order related products separately.

| MODEL SERIES | SOLAR PANEL OUTPUT |
|-------------------------|--------------------|
| BPSS | - 10 |
| BPSS Solar Power Supply | 10 10 Watts |
| | 20 20 Watts |

Securiton AQE



Single-Port PoE

| MODEL | DESCRIPTION | PRICE |
|--------|---|-------|
| AQE15 | MidSpan Injector, 1.4A, Dual Voltage | \$107 |
| AQE30 | MidSpan Injector, 2.6 AMP, Dual Voltage | \$167 |
| AQE30E | MidSpan Extractor, 0.6 AMP | \$167 |

Securiton AQE



Multi-Port Rack Mount PoE

| MODEL | DESCRIPTION | PRICE |
|---------|----------------------------------|---------|
| AQE250R | 256W 16 Port Rack Mount Injector | \$2,278 |
| AQE500R | 540W 16 Port Rack Mount Injector | \$2,711 |

How to Order Specify quantity and the following information. Order related products separately.

| MODEL SERIES | POWER | FUNCTION | MOUNTING STYLE |
|--------------|------------|----------------------|-------------------------|
| AQE | 500 | | R |
| AQE PoE | 15 | (blank) PoE Injector | (blank) Single Port |
| | 30 | E PoE Extractor | R Rack Mount Multi-Port |
| | 250 | | |
| | 500 | | |

Items can only be ordered as listed above.

Securitron PSP



PSP Plug-In Power Supplies

| MODEL | DESCRIPTION | PRICE |
|------------|---------------|-------|
| PSP-12 | 12 VDC, 700mA | \$47 |
| PSP-24 | 24 VDC, 350mA | \$47 |
| PSP-12-3 | 12 VDC, 3A | \$93 |
| PSP-24-1.5 | 24 VDC, 1.5A | \$93 |

Other Power Products

| MODEL | DESCRIPTION | PRICE |
|----------|--|-------|
| BR-4 | Bridge Rectifier — 4A | \$33 |
| B-12-08 | Battery — 12VDC, 0.8Ah | \$63 |
| B-12-5 | Battery — 12 VDC, 5Ah | \$52 |
| B-24-5 | Battery — 24 VDC, 5Ah | \$108 |
| CKL | Cabinet Key Lock | \$25 |
| CCB-8-12 | Central Control Board — 12 VDC, 8 Fused Outputs | \$112 |
| CCB-8-24 | Central Control Board — 24 VDC, 8 Fused Outputs | \$112 |
| CFAR-12 | Fire Alert Reset Control – Canada — 12 VDC, Board Only | \$163 |
| CFAR-24 | Fire Alert Reset Control – Canada — 24 VDC, Board Only | \$163 |
| FAR-12 | Fire Alert Reset Control — 12 VDC | \$300 |
| FAR-24 | Fire Alert Reset Control — 24 VDC | \$300 |
| PSM-12 | Power Supply Monitor — 12 VDC | \$687 |
| PSM-24 | Power Supply Monitor — 24 VDC | \$687 |

Power Transfers

Securitron ICPT



Inductive Coupling Power Transfer

| MODEL | DESCRIPTION | PRICE |
|-------|-------------|-------|
| ICPT | PowerJump | \$252 |

Securitron CEPT



Concealed Electrical Power Transfers

| MODEL & FINISH | DESCRIPTION | US32D | 04/606 | 10/612 | 10B/613 |
|----------------|------------------------|-------|--------|--------|---------|
| CEPT-10 | 10 Wire | \$402 | \$464 | \$464 | \$464 |
| CEPT-C5E | CAT-5E | \$450 | \$511 | \$511 | \$511 |
| EL-CEPT | ElectroLynx Connectors | \$482 | \$482 | \$482 | \$515 |
| CEPT-NW | No Wires | \$402 | — | — | — |

How to Order Specify quantity and the following information. Order related products separately.

| WIRE CONNECTORS | SHAPE | NUMBER OF WIRES | FINISH |
|---------------------------|----------------|------------------|--------------------|
| EL | – CEPT | – C5E | – 10B |
| (blank) No Connectors | CEPT Concealed | (blank) 12 Wires | (blank) 630 finish |
| EL ElectroLynx Connectors | | 10 10 Wires | 04 606 finish |
| | | C5E 9 Wires | 10 612 finish |
| | | | 10B 613 finish |

Securitron SEPT



Square-Cut Electrical Power Transfers

| MODEL | DESCRIPTION | PRICE |
|----------|------------------------|-------|
| SEPT | Cut Standard Version | \$77 |
| SEPT-10 | 10 Wire | \$110 |
| SEPT-C5E | Cat5E Compatible | \$105 |
| EL-SEPT | ElectroLynx Connectors | \$102 |

How to Order

Specify quantity and the following information. Order related products separately.

| WIRE CONNECTORS | SHAPE | NUMBER OF WIRES |
|---------------------------|-----------------|------------------|
| EL | – SEPT | – C5E |
| (blank) No Connectors | SEPT Square Cut | (blank) 12 Wires |
| EL ElectroLynx Connectors | | 10 10 Wires |
| | | C5E 9 Wires |

Securitron EPT



Electrical Power Transfers

| MODEL | DESCRIPTION | EPT | EPTL |
|-----------|---------------------------|-------|-------|
| EPT | | \$69 | \$93 |
| EPT-SC | Swing Clear | \$104 | — |
| EL-EPT | ElectroLynx | \$107 | \$130 |
| EL-EPT-SC | ElectroLynx — Swing Clear | \$141 | — |

How to Order

Specify quantity and the following information. Order related products separately.

| WIRE CONNECTIONS | SHAPE | DOOR SWING |
|---------------------------|---------------|-------------------------|
| EL | – EPT | – SC |
| (blank) No Connectors | EPT 10" Cord | (blank) Standard Swing |
| EL ElectroLynx Connectors | EPTL 18" Cord | SC Swing Clear / Pivots |
| | | C5E 9 Wires |

Securitron EH



Electric Hinges

| MODEL | DESCRIPTION | 40 | 45 |
|-------|--------------------|-------|-------|
| EH | Concealed — 6 Wire | \$286 | \$286 |

How to Order

Specify quantity and the following information. Order related products separately.

| MODEL SERIES | LENGTH |
|-------------------|----------------|
| EH | – 45 |
| EH Electric Hinge | 40 4" Length |
| | 45 4.5" Length |

**Securiton
TSB**



Door Cords

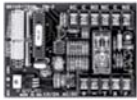
| MODEL | DESCRIPTION | STANDARD 18" | CXL 36" |
|-------|-----------------------|--------------|---------|
| TSB-C | With Caps, Gray/Black | \$35 | \$44 |

How to Order *Specify quantity and the following information. Order related products separately.*

| MODEL SERIES | SIZE |
|-----------------|-------------|
| TSB-C | XL |
| TSB-C Door Cord | (blank) 18" |
| | XL 36" |

Accessories

**Securiton
TM-2, TM-9,
DT-7 and PZ1**



Timers & Alarms

| MODEL | DESCRIPTION | PRICE |
|-------|-------------------------------------|-------|
| TM-2 | Multi-Function Timer, 1-255 seconds | \$147 |
| TM-9 | Time Mate Timer, 2-36 Seconds | \$75 |
| DT-7 | Digital Timer, 7 day | \$238 |
| PZ1 | Piezo on Keyplate — Single Gang | \$71 |

**Securiton
BA-DPA**



Door Prop Alarm Monitoring

| MODEL | DESCRIPTION | 12 | 24 |
|--------|------------------|-------|-------|
| BA-DPA | With Boxed Alarm | \$260 | \$260 |

How to Order *Specify quantity and the following information. Order related products separately.*

| MODEL SERIES | VOLTAGE |
|------------------------------|-------------|
| BA-DPA | - 24 |
| BA-DPA Door Prop Alarm Timer | 12 12VDC |
| | 24 24VDC |

**Securiton
DPS**



Door Position Switches

| MODEL | DESCRIPTION | BK | GY | WH |
|-------|-------------|------|------|------|
| DPS-M | Metal Doors | \$30 | \$30 | \$30 |
| DPS-W | Wood Doors | \$23 | \$23 | \$23 |

How to Order *Specify quantity and the following information. Order related products separately.*

| MODEL SERIES | DOOR TYPE | FINISH |
|--------------------------|--------------|-------------|
| DPS | - M | - BK |
| DPS Door Position Switch | M Metal Door | BK Black |
| | W Wood Door | GY Grey |
| | | WH White |

Securitron MSS



Magnetic Switch/High Security

| MODEL | DESCRIPTION | STANDARD | REMOTE TEST |
|--------|---------------|----------|-------------|
| MSS-1 | | \$226 | — |
| MSS-1C | Concealed | \$226 | \$266 |
| MSS-1G | Surface Mount | \$226 | \$266 |

How to Order

Specify quantity and the following information. Order related products separately.

| MODEL SERIES | MOUNTING METHOD | SPECIAL FEATURE |
|------------------------------|-----------------|-----------------|
| MSS-1 | C | — RT |
| MSS Magnetic Security Switch | C Concealed | RT Remote Test |
| | G Surface Mount | |

NOTE: No other combinations of model numbers can be ordered other than what is listed.

Securitron LM



Latch Monitors

| MODEL | DESCRIPTION | PRICE |
|-------|--|-------|
| LML-1 | ANSI, 4-7/8, Strike, SPDT, 3A | \$120 |
| LML-2 | ANSI, 4-7/8, Strike, Dual Switches, SPDT, 3A | \$164 |
| LMS-1 | ANSI, 2-3/4", Strike, SPDT, 3A | \$120 |

How to Order

Specify quantity and the following information. Order related products separately.

| MODEL SERIES | STRIKE SIZE | NUMBER OF SWITCHES |
|------------------|----------------------|--------------------|
| LM | L | — 2 |
| LM Latch Monitor | L ANSI 4-7/8" Strike | 1 Single Switch |
| | S ANSI 2-3/4" Strike | 2 Dual Switches |

Securitron RLP, RB-4



Relay Logic Packs & Boards

| MODEL | DESCRIPTION | 12 VDC | 24 VDC |
|-------|-----------------------|--------|--------|
| RLP | Relay Logic Pack — 12 | \$60 | \$60 |
| RB-4 | Relay Board — 24VDC | \$118 | \$118 |

How to Order

Specify quantity and the following information. Order related products separately.

| MODEL SERIES | VOLTAGE |
|----------------------|----------|
| RLP | — 12 |
| RLP Relay Logic Pack | 12 12VDC |
| RB-4 Relay Board | 24 24VDC |

ASSA ABLOY Electronic Security Hardware Terms & Conditions

PRICES: All prices are subject to change without notice. Prices listed on assaabloyesh.com will serve as the most current list price. All shipments will be made at prices in effect at the time of shipment. The customer shall be responsible for payment of all applicable sales and/or use taxes and freight costs.

MINIMUM ORDER: Minimum product charge per invoice is \$150.00 USD.

PAYMENT TERMS: Net thirty (30) days from date of invoice. Interest at the rate of up to 1-1/2% per month may be charged on all past due accounts. An order received on an account which has not been paid within 45 days of the date of invoice may not be processed until the account is current. Custom orders may require a deposit.

DELIVERY TERMS: All prices are Ex-works factory. Purchaser assumes the risk of loss or damage to the goods while in transit from the point of shipment. ASSA ABLOY Electronic Security Hardware reserves the right to make delivery in installments. Installments shall be separately invoiced and paid for when due. Delay in delivery of an installment shall not relieve the purchaser of its obligation to accept remaining deliveries.

SHORTAGE: Any claim for shortages must be made to ASSA ABLOY Electronic Security Hardware in writing within one (1) week of receipt of merchandise.

WARRANTY RETURNS: A Customer Care Form (CCF) for defective product must be obtained from ASSA ABLOY Electronic Security Hardware before any merchandise can be returned. CCF's are valid for sixty (60) days from date of issuance. Goods returned under the terms of MagnaCare® and SecuriCare Warranties may require a copy of the original invoice.

RETURNS: A Customer Care Form (CCF) must be obtained from ASSA ABLOY Electronic Security Hardware before any merchandise can be returned. CCF's are valid for sixty (60) days from date of issuance. Items that are not factory sealed, or that are returned later than ninety (90) days from the date of receipt are subject to a restocking charge plus an additional charge for any damage.

CANCELLATIONS: Any order may be subject to a 5% cancellation charge for catalog items. Cancellation of non-catalog or custom items will be subject to a 20% cancellation charge plus all costs (both direct and indirect) incurred by manufacturing at the point of cancellation that are properly allocated to the cancelled item(s).

LIMITATION OF LIABILITY: Neither party will be liable to the other for any delay or failure in performance arising directly out of war, sabotage, insurrection, riot, and any other act of civil disobedience, act of public enemy, fire, explosion, flood, storm, or other act of God or nature, or similar cause beyond its reasonable control, including shortage or unavailability of labor or materials. If, notwithstanding the foregoing limitations, ASSA ABLOY Electronic Security Hardware has any liability to the purchaser, the purchaser agrees that the total liability to the purchaser for all losses, damages, and causes of action, whether in contract, equity, tort (including without limitation, negligence and gross negligence), or otherwise, will not exceed the amount the purchaser paid to ASSA ABLOY Electronic Security Hardware for the products (including, without limitation, incidental or consequential damages, damages for lost profits or business interruption, and punitive damages).

NO THIRD PARTY LIABILITY: If the purchaser uses the ASSA ABLOY Electronic Security Hardware Products on behalf of others or provides to others any products referenced herein, the ASSA ABLOY Electronic Security Hardware Parties shall have no liability to such persons whatsoever, and the purchaser agree to defend and indemnify the ASSA ABLOY Electronic Security Hardware Parties from any and all claims and demands asserted against them, and from any legal fees, costs and other expenses that the ASSA ABLOY Electronic Security Hardware Parties incur therewith.

Customers purchasing from Door Security Solutions Canada can find Canadian terms and conditions at www.assaabloy.ca/terms

ASSA ABLOY Electronic Security Hardware Warranties

In 1999 Securitron introduced the first no-fault, no questions asked warranty to the industry, MagnaCare®. As a part of HES and Securitron's transition to ASSA ABLOY Electronic Security Hardware, we believe that the best products in the industry should be supported by our commitment to deliver the highest quality products and services. ASSA ABLOY Electronic Security Hardware is proud to now extend the most comprehensive no-fault, no questions asked warranty coverage to all of our products and solutions. This is our expectation and commitment to you — our valued customer.



MagnaCare
Warranty

MagnaCare Warranty

Duration: Lifetime

Condition: Any reason, including, but not limited to, installation error, vandalism or force majeure.

Replacement: Replacement product or equivalent shipped at ASSA ABLOY Electronic Security Hardware expense via next day air freight in most cases.

Products Covered:

- Electromagnetic and Specialty Locks
- Power Supplies (excluding BPSS) and Power Transfers
- Push Buttons, Keypads, Keyswitches and Egress Devices



SecuriCare
Warranty

SecuriCare 10-year Warranty

Duration: Ten years from date of shipment

Condition: Any reason including, but not limited to, installation error, vandalism or force majeure

Replacement: Replacement product or equivalent shipped at ASSA ABLOY Electronic Security Hardware expense via next day air freight in most cases.

Products Covered:

- HES 1500, 1600 Electric Strikes
- When installed with a HES Smart PAC III the following electric strikes are upgraded to the 10 year warranty:
 - HES 1006, 4500, 5000, 5200, 7500, 8000, 8300, 8500, 9400, 9500, 9600, 9700, 9800 Electric Strikes
 - HES Folger Adam 310, 712, 732, 742 Electric Strikes
 - Integrated Wiegand Electric Strikes



SecuriCare
Warranty

SecuriCare 5-year Warranty

Duration: Five years from date of shipment

Condition: Any reason including, but not limited to, installation error, vandalism or force majeure.

Replacement: Replacement product or equivalent shipped at ASSA ABLOY Electronic Security Hardware's expense via next day air freight in most cases.

Products Covered:

- HES 1006, 4500, 5000, 5200, 7500, 8000, 8300, 8500, 9400, 9500, 9600, 9700, 9800 Electric Strikes
- HES Folger Adam 310, 712, 732, 742 Electric Strikes
- Integrated Wiegand Electric Strikes
- Securitron MUNL, UNL Electric Strikes



SecuriCare
Warranty

SecuriCare 3-year Warranty

Duration: Three years from date of shipment

Condition: Any reason, including but not limited to, installation error, vandalism or force majeure

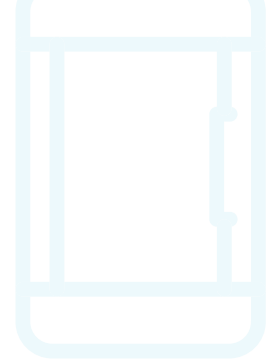
Replacement: Replacement product or equivalent shipped at ASSA ABLOY Electronic Security Hardware's expense via next day air freight in most cases.

Products Covered:

- Aperio® Wireless Products AS100, K100, KS100, R100
- HES 610, 660, K20, KP20 Cabinet Locks
- Integrated Wiegand Cabinet Locks HES K200, KS200
- BPSS Solar Power Supplies
- Accessories

ASSA ABLOY Electronic Security Hardware Warranties apply to products shipped on or before January 1, 2018. Check your individual product to determine warranty coverage. Batteries and consumables are not covered by ASSA ABLOY Electronic Security Hardware Warranty programs. Replacement products, at ASSA ABLOY Electronic Security Hardware's sole option, may be the identical item or a unit which serves as a functional replacement. If the customer has an account with ASSA ABLOY Electronic Security Hardware or a valid credit card, the customer may order an advance replacement product, whereby ASSA ABLOY Electronic Security Hardware will charge the customer's account for the price of the product plus next day air freight, and will credit back to the customer the full amount of the charge, including outbound freight, upon ASSA ABLOY Electronic Security Hardware's receipt of the original product from the customer. ASSA ABLOY Electronic Security Hardware's sole and exclusive liability, and customer's sole remedy, is limited to the replacement of the ASSA ABLOY Electronic Security Hardware product when delivered to ASSA ABLOY Electronic Security Hardware's facility (freight and insurance charges prepaid by customer).

ASSA ABLOY is the global leader in door opening solutions, dedicated to satisfying end-user needs for security, safety and convenience



ASSA ABLOY

ELECTRONIC SECURITY HARDWARE

HES | Securitron

USA

800.626.7590 | f. 866.582.4641 | assaabloyesh.com

10027 S. 51st Street, Ste. 102 Phoenix, AZ 85044

customerservice.esh@assaabloy.com

techsupport.esh@assaabloy.com

orders.esh@assaabloy.com


CANADA

800.461.3007 | f. 800.461.8989 | assaabloydss.ca

160 Four Valley Dr., Vaughan, ON, Canada L4K 4T9

sales.dss.ca@assaabloy.com

orders.dss.ca@assaabloy.com

  @assaabloyesh

  ASSA ABLOY Electronic Security Hardware

Patent pending and/or patent www.assaabloydss.com/patents

Copyright © 2019, Hanchett Entry Systems, Inc., an ASSA ABLOY Group company. All rights reserved. Reproduction in whole or in part without the express written permission of Hanchett Entry Systems, Inc. is prohibited. ESH-047-1118

