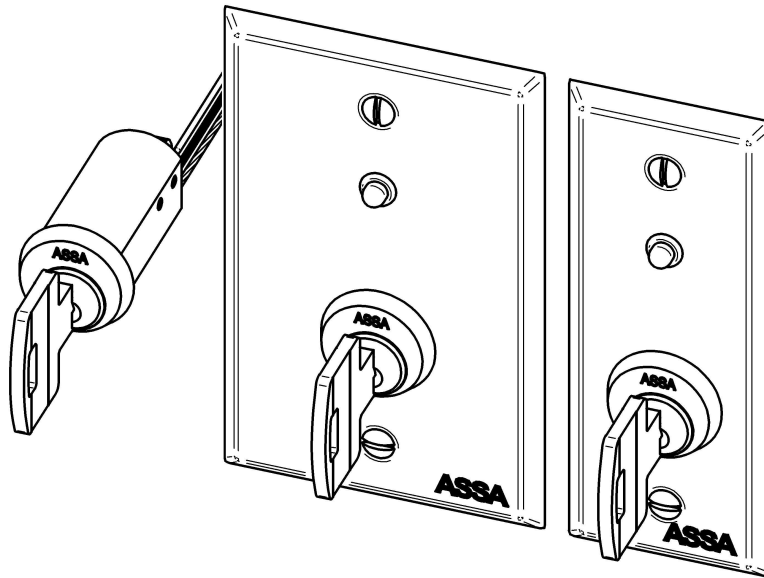




# Switch Lock

## ASSA 7/8" DOUBLE D MICRO-SWITCH LOCKS



### SWITCH OPERATIONAL SPECIFICATIONS

The Double D Micro-Switch Unit assembly comes in three optional styles. The cylinder assembly is available with keyplate for wall mounting or without a keyplate for cabinet type mounting. Both Standard and Narrow Stile Keyplate versions include a stainless steel cover with an installed bi-color LED. The Double D Micro-Switch Unit functions are available in either **Momentary** switching operation or **Alternate** switching operation and are also field reversible.

#### Dimensions

**Standard Stile:** 2-3/4" x 4-1/2" [70mm x 114.3mm]

**Narrow Stile:** 1-3/4" x 4-1/2" [44.5mm x 114.3mm]

#### Micro-Switch Contact Rating:

SPDT, 3 Amps @ 24 Volts DC

#### LED Rating:

15mA @ 12 Volts DC

16mA @ 24 Volts DC

#### Operation Temperatures:

-40F to 160F (-40C to 71C)

### SWITCH OPERATION CONVERSION

The Double D Micro-Switch Unit includes three 6" lead wires, 22 gauge, 7 strands. The switch is used as a monitor signal with access control equipment. The wires are color coded and functions are as illustrated below in **Figure 1.1**.

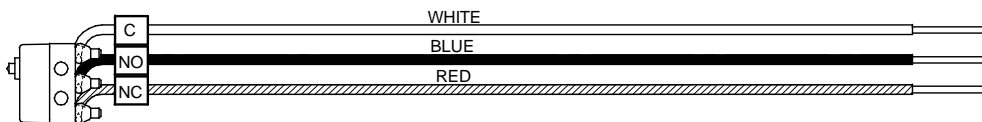
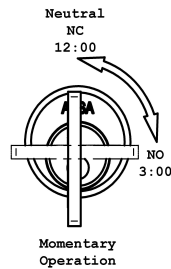


Figure 1.1

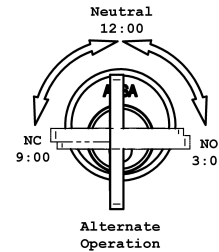


# Switch Lock

The Double D Micro-Switch Unit operational functions in the **Momentary** operation are shown in **Figure 2.1**. The Double D Micro-Switch Unit functions in the **Alternate** operational are shown in **Figure 2.2**. Neutral is the position of the key for insertion/removal from the cylinder.

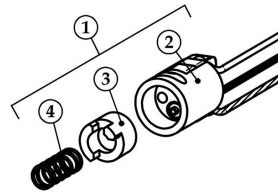


**Figure 2.1**

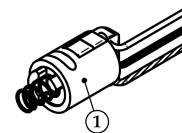


**Figure 2.2**

**Figure 3.1** and **Figure 3.2** below illustrate the assembly of the three parts which make up the Double D Micro-Switch Unit (#1). The parts of the Double D Micro-Switch Unit are (#2) Main Switch Housing, (#3) Actuator Cam and (#4) Spring, Cam. There is only one method to correctly align the part assembly.

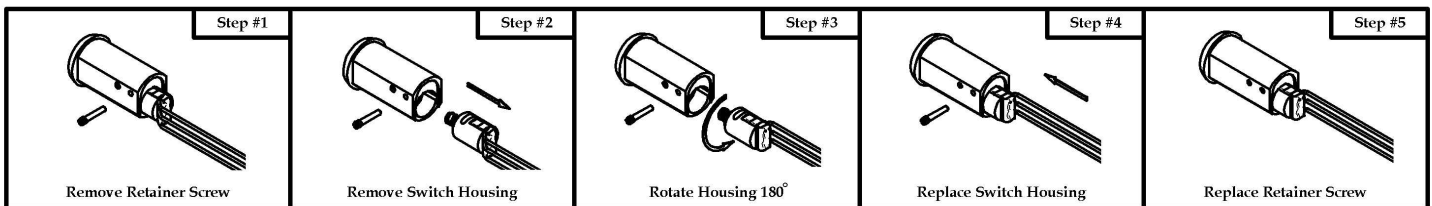


**Figure 3.1**

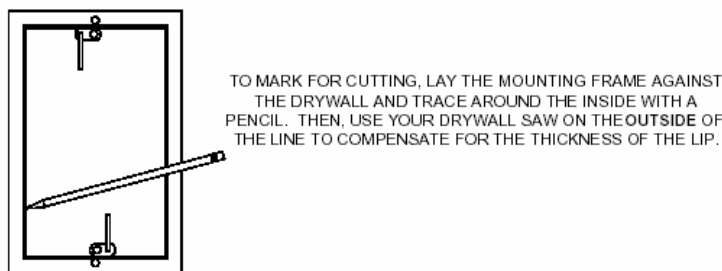


**Figure 3.2**

When converting Double D Micro-Switch Unit from **Momentary** operation to **Alternate** operation or from **Alternate** operation to **Momentary** operation follow the visual instructions below in **Steps 1 - 5**. Keep the Double D Micro-Switch Unit parts assembled as explained in **Figure 3.1** and **Figure 3.2**.

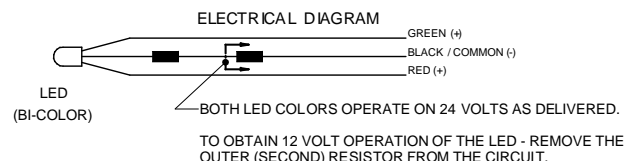


The Double D Micro-Switch Unit with a single gang plate is also supplied with a plastic single gang cut-in Zip Ring for drywall application. **Figure 4.1** shows the installation instructions for use. (The narrow stile keyplate does not include a mounting device for installation).



**Figure 4.1**

The Bi-Color LED is an additional feature that is included in both keyplate stiles. It provides visual status monitoring for access control equipment. For correct electrical hook-up follow the electrical diagram below in **Figure 5.1**.



**Figure 5.1**