

Cabinet Lock Overview

ELECTRONIC SECURITY HARDWARE HES & SECURITRON | MEDECO

The global leader in
door opening solutions



Flexible Scalable Repeatable

As the access control industry continues to evolve, non-traditional openings such as cabinets represent a significant opportunity for growth. Whether it's lockers, drawers or doors, cabinet locks are becoming one of the fastest growing areas of the physical security industry, giving security professionals the opportunity to enter new business segments and secure more openings than ever before.

From server cabinets to employee lockers and other supply and storage cabinets, we offer a complete suite of flexible solutions to meet your needs.

- Low profile solutions for compact applications
- Traditional and integrated access control options
- Choice of wired and wireless

Areas of Application

- Data server cabinets
- File and document storage
- Equipment storage
- Display cases
- Controlled substance secure storage
- Evidence chain of custody (CoC) control
- Smart lockers
- Medical or chemical storage
- Flaps on mail receiving facilities, interlocks, postal distribution systems





Medeco M3

Latchbolt

Medeco X4

Deadlock

Medeco XT

Utility Cam Lock

How to Order

Model	Cylinder Technology	Finish	Keyway	Pinning
X	G	26	LT	P
	T Medeco ³	26 Satin chrome finish standard. Other finishes available, depending on volume		S Sub-assembled
	N Medeco X4			P Pinned
	G Medeco XT			M Master Keyway

Mechanical Credentials & Intelligent Keys

All Medeco cabinet locks feature solid brass and steel construction, available in either fixed or removable core. Patented key programs prevent the unauthorized duplication of keys and maintain system integrity. Keyed alike, keyed different, or master keyed, the Medeco cabinet lock is the perfect solution for your showcase security needs.

- Available key technologies
 - Mechanical: M3, X4
 - Intelligent: XT
- Patent Key Control
- Available in e-cylinder
- Protection from physical attack

HES K20

The battery powered K20 is the flexible, low cost cabinet lock solution for low to medium security applications with 150 lbs of holding force.

- 13.56 MHz RFID (Supports MIFARE Classic™ or MIFARE Ultralight™ Card Technology)
- 20 Master Credentials
- 20 User/New Credentials Email

How to Order

Model Series
K20



HES KP20

The battery powered KP20 is the flexible, low cost cabinet lock solution for low to medium security applications with 150 lbs of holding force.

- 12-button keypad
- One master code
- One user code

How to Order

Model Series
KP20



Stand Alone Keypad

- Stand alone, no audit trail
- Supports both Public (one time use) and Private (on-going) programming mode
- Accommodates door thickness 1/16" to 7/8" [1 to 23 mm]
- Battery powered by 3x AAA alkaline batteries (approximately 30K cycles)

Wireless



HES K100

The HES K100 Series cabinet lock utilizes wireless Aperio® technology that supports low or high frequency cards to extend access control to lockers, drawers or doors. Comes standard with locked state monitoring, optional mechanical key override and over 150 lbs of holding force.

HES KS100

The HES KS100 is a PoE hardwired server cabinet lock with wireless Aperio® technology that supports low or high frequency cards. Designed to install easily on swing handle server cabinet doors, the KS100 includes locked state monitoring and utilizes an SFIC mechanical key override.



HES K100

- Supports either HID® 125 kHz Prox or 13.56 MHz iCLASS® SE contactless credentials
- Battery powered by 2x AA lithium batteries
- Optional factory pre-paired lock and hub kits available

Accessories

622-JSP Jump-start battery pack

OBS-622 Open back strike plate

EXT-10-ANT Aperio Hub External Antenna (Omni-directional)

How to Order

Series	Model	Card Technology
K100	– 622H	– PA
	622H Factory Paired*	PA HID® 125 kHz Prox
		SE HID® 13.56 MHz iCLASS SE

*Kit includes integrated lock paired with Wiegand 1:1 wireless hub



HES KS100

- Supports either HID® 125 kHz Prox or 13.56 MHz iCLASS® SE contactless credentials
- Hard powered by IEEE 802.3af PoE, 48VDC or 24VDC (+/10%)
- Optional factory pre-paired lock and hub kits available

Accessories

SFIC MEDECO X4 SFIC Cylinder & 2 keys (1 control, 1 user)

SFIC-BC KS SFIC Blank, Black Plastic Core

KS-DPS Surface Mount DPS (external)

KS-CAM38 CAM: 38MM-1

KS-CAM45 CAM: 45MM - 5

EXT-10-ANT Aperio Hub External Antenna (Omni-directional)

How to Order

Series	Model	Card Technology
KS100	– 640H	– PA
	640H Factory Paired*	PA HID® 125 kHz Prox
		SE HID® 13.56 MHz iCLASS SE

*Kit includes integrated lock paired with Wiegand 1:1 wireless hub

HES K200

- Hard powered by 12-24VDC (+/-10%)
- Optional ElectroLynx™ interface cables available

Accessories

OBS-622 Open back strike plate

CBL6-QC12 K200/KS200 Lock Side Interface Cable: 6 foot, 12 conductor and Molex both ends

CBL12-QC12 K200/KS200 Lock Side System Interface Cable: 12 foot, 12 conductor and Molex one end, pinned one end

WT-1 Wiegand Test Box with LED Indicators

WT-2 Wiegand Test Box with LCD Backlit Display and LED Indicators



How to Order

Series	Model	Color	Turn
KS200	- 622	- B	2
	622 Wiegand, MultiCLASS SE	B Black	2 Thumbturn

HES KS200

- Featuring HID MultiCLASS SE® contactless card technology
- Hard powered by 12-24VDC (+/-10%)
- Optional ElectroLynx™ interface cables available

Accessories

SFIC MEDECO X4 SFIC Cylinder & 2 keys (1 control, 1 user)

SFIC-BC KS SFIC Blank, Black Plastic Core

KS-DPS Surface Mount DPS (external)

KS-CAM38 CAM: 38MM-1

KS-CAM45 CAM: 45MM-5

CBL6-QC12 K200/KS200 Lock Side Interface Cable: 6 foot, 12 conductor and Molex both ends

CBL12-QC12 K200/KS200 Lock Side System Interface Cable: 12 foot, 12 conductor and Molex one end, pinned one end

WT-1 Wiegand Test Box with LED Indicators

WT-2 Wiegand Test Box with LCD Backlit Display and LED Indicators



How to Order

Series	Model
KS200	- 640
	640 Wiegand, MultiCLASS SE

Online Integrated Wiegand

HES K200

The HES K200 cabinet lock utilizes a multi-technology reader with hardwired Wiegand wiring to upgrade access control, accountability and efficiency for cabinet doors and drawers.

HES KS200

The HES KS200 server cabinet lock utilizes a multi-technology reader with hardwired Wiegand wiring to provide physical security, auditability and accountability to standard swing handle server cabinets. Comes standard with locked state monitoring and utilizes an SFIC mechanical key override.



Online Wired



HES 660

The strongest multi-purpose cabinet lock available from HES has over 1,000 lbs of holding force. Available with or without locked state monitoring and a preload release function, allowing for smooth functional operation under a variety of environmental conditions.

Accessories

KO 660 Key Override

How to Order

Series	Voltage	Option (s)
660	– 12V	– LBSM – Preload
	12V 12 Volt	(blank) No Preload, No Monitoring
	24V 24 Volt	Preload Up to 15 lbs
		LBSM Locked State Monitoring
		LBSM–Preload Locked State Monitoring with Preload



HES 610

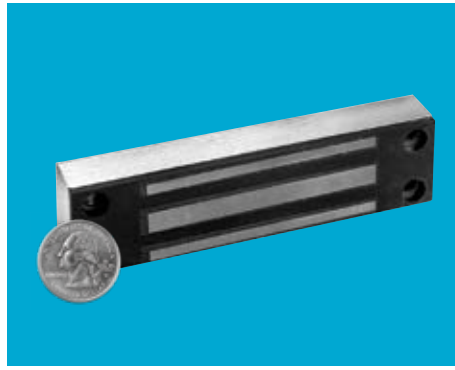
The versatile, compact, cost effective cabinet lock that can be used to secure drawers or doors. The HES 610 is available with or without locked state monitoring and has over 200 lbs of holding force.

How to Order

Series	Option (s)
610	– LM
	(blank) No Monitoring
	LM Locked State Monitoring

Securitron MCL

This compact Magnalock® is ideal for extending access control to all types of asset protection. Typical applications include jewelry cases, museum cases, gun cabinets, pharmaceutical storage cabinets, cash drawers and any swinging or sliding door or drawer that needs asset control — indoors or out.



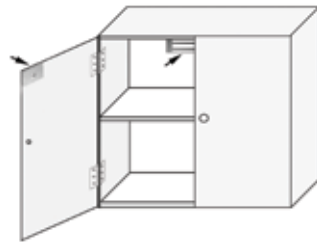
How to Order

Model Series
MCL-24
MCL-24

Securitron M32-SS

Split Strike Magnalock®

Add asset control to your existing access control system with the durable, energy-efficient M32-SS. Ideal for securing large two-door cabinets, retail cases or double-door, indoor/outdoor storage applications with out-swinging doors that share a center latching point. Each strike plate of the M32-SS delivers 300 lbs of holding force (600 lbs total).



How to Order

Model Series	Monitoring Options	Strike Plate Options
M32	BD	-SS
M32 (600 lbs)	(blank) No Monitoring BD BondStat Monitor	SS Split Strike

Online Wired



ASSA ABLOY is the global leader in door opening solutions, dedicated to satisfying end-user needs for security, safety and convenience

ASSA ABLOY



USA

Electronic Security Hardware

800.626.7590 | fax: 866.582.4641 | assaabloyesh.com

customerservice.esh@assaabloy.com | techsupport.esh@assaabloy.com | orders.esh@assaabloy.com

Medeco

877.633.3261 | medeco.com

orders@medeco.com

CANADA

800.461.3007 | assaabloydss.ca

Customer Support in Canada: cavau-sales@assaabloy.com

Patent pending and/or patent www.assaabloydss.com/patents

Copyright © 2018, Hanchett Entry Systems, Inc., an ASSA ABLOY Group company. All rights reserved. Reproduction in whole or in part without the express written permission of Hanchett Entry Systems, Inc. is prohibited. ESH-004-0418