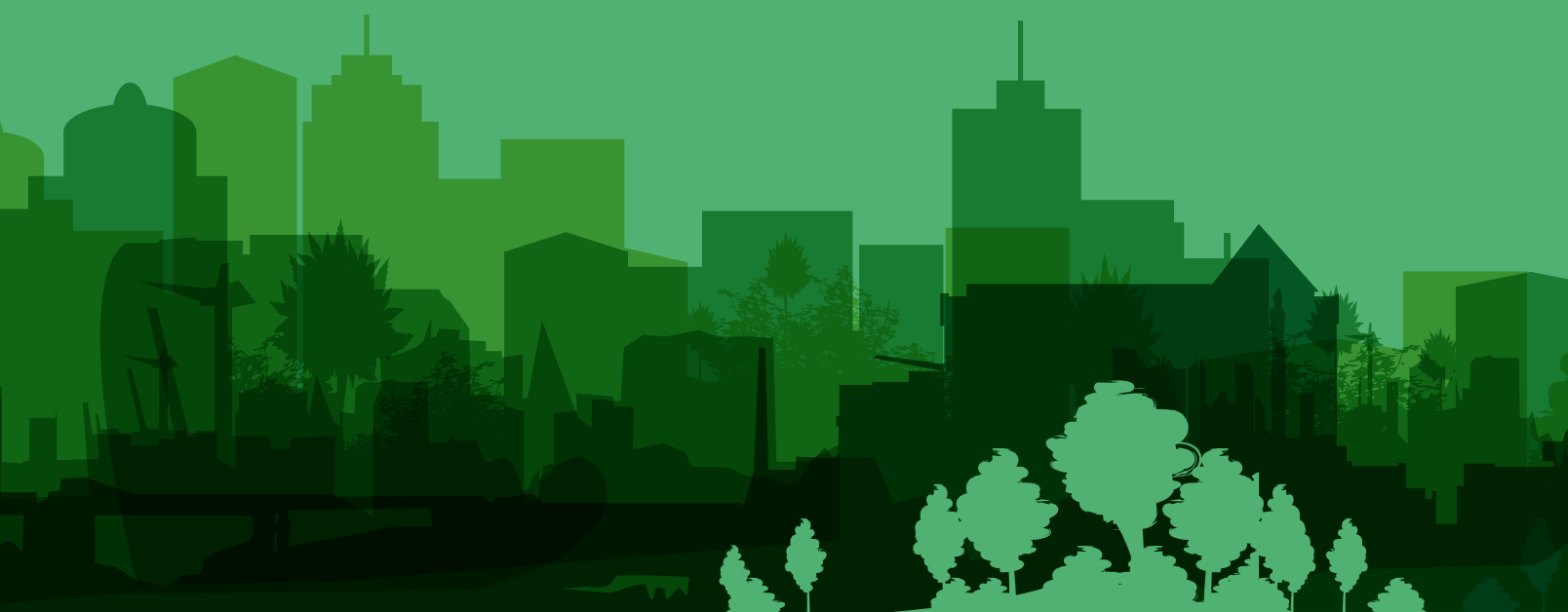




ASSA ABLOY



Product Pricelist

U.S. & Canada Effective Date: June 1, 2022



Experience a safer
and more open world



ASSA ABLOY

Product Pricelist





HES Product List

Electric Strikes

1006	2
1500	4
1600	5
NEW ES100	6
4500C	7
5000, 5200	8
7000	9
7501	10
8000, 8300	10
8500	11
UNL MUNL	11
9400, 9500, 9600, 9700, 9800	12
Folger Adam SB:310-1(X), 310-2	13
Folger Adam 310-2 3/4, 310-2 3/4 OB	14
Folger Adam 310-3-1	14
Folger Adam 310-4, 310-4 (S)	15
Folger Adam 310-4-X	15
Folger Adam 310-6-X	16
Folger Adam 310-1-X	19
Folger Adam 712, 712-75	20
Folger Adam 732, 732-75	20
Folger Adam SB710, SB710-75	21
Folger Adam SB730, SB730-75	21
Folger Adam 742-75	22
Folger Adam SB740-75	22
Electric Strike Accessories	23

Cabinet Locks

610	24
660	24
KP20 Stand-Alone Keypad Cabinet Lock	24
K100-622H Aperio Wireless Cabinet Lock Kits	25
K200 Wired Cabinet Lock	25
NEW KS-M Mechanical Cabinet Lock	26
NEW KS200 Wiegand Integrated Wired Access Control Server Cabinet Lock	26
NEW KS210 OSDP Integrated Wired Access Control Server Cabinet Lock	27
K200, KS-M, KS200, KS210 Accessories	27

Terms & Conditions | Warranty

Terms & Conditions, Warranties	28
--------------------------------------	----

Electric Strikes

1006CLB Complete Pacs for Latchbolt Locks

MODEL	DESCRIPTION	630
1006CLB		\$699
1006CLB-F	Fail Safe	\$699
1006CLB-LBM		\$829
1006CLB-F-LBM	Fail Safe	\$829
1006CLB-LBSM		\$839
1006CLB-F-LBSM	Fail Safe	\$839

1006CDB Complete Pacs for Locks with Deadbolts

MODEL	DESCRIPTION	630
1006CDB		\$727
1006CDB-F	Fail Safe	\$727

1006CAS Complete Pacs for Locks with Continuous Deadbolt Recapture

MODEL	DESCRIPTION	630
1006CAS		\$737
1006CAS-F	Fail Safe	\$737
1006CAS-2		\$767
1006CAS-2-F	Fail Safe	\$767

1006CS Complete Pacs for Latchbolts & Deadbolts

MODEL	DESCRIPTION	630
1006CS		\$772
1006CS-F	Fail Safe	\$772

1006 Electric Strike Bodies

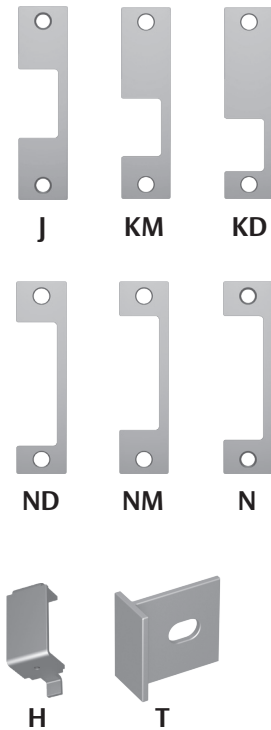
MODEL	DESCRIPTION	605	606	612	613	629	630	BLK
1006		\$762	\$746	\$746	\$714	\$762	\$654	\$684
1006-F	Fail Safe	\$762	\$746	\$746	\$714	\$762	\$654	\$684
1006-LBM		\$892	\$876	\$876	\$844	\$892	\$784	\$814
1006-F-LBM	Fail Safe	\$892	\$876	\$876	\$844	\$892	\$784	\$814
1006-LBSM		\$902	\$886	\$886	\$854	\$902	\$794	\$824
1006-F-LBSM	Fail Safe	\$902	\$886	\$886	\$854	\$902	\$794	\$824



How to Orders on next page

Faceplates

MODEL	DESCRIPTION	605	606	612	613	629	630	BLK
LB	Kit includes J, KM and KD faceplates						\$45	
DB	Kit includes faceplates and brackets to make N and H series options						\$73	
DB2	Kit includes faceplates and brackets to make N-2 and H-2 series options						\$104	
J		\$121	\$109	\$109	\$66	\$109	\$41	\$66
KD		\$121	\$109	\$109	\$66	\$109	\$41	\$66
KM		\$121	\$109	\$109	\$66	\$109	\$41	\$66
ND		\$122	\$107	\$107	\$87	\$107	\$64	\$87
NM		\$122	\$107	\$107	\$87	\$107	\$64	\$87
HM		\$122	\$107	\$107	\$87	\$107	\$64	\$87
HTD		\$122	\$107	\$107	\$87	\$107	\$64	\$87



Specialty Faceplates

MODEL	605	606	612	613	629	630	BLK
E	\$123	\$109	\$109	\$87	\$109	\$64	\$87
R	\$123	\$109	\$109	\$87	\$109	\$64	\$87
Z	\$122	\$107	\$107	\$67	\$107	\$42	\$67
J-2	\$136	\$119	\$119	\$106	\$119	\$82	\$106
KM-2	\$136	\$119	\$119	\$106	\$119	\$82	\$106

Accessories

ITEM	DESCRIPTION	PRICE
157	Torx screws	\$16
1000-102	Rain guard	\$40
1000-104	Lip extension trim adapter (BLK)	\$73
1000-110	Replacement strike plate	\$121
1000-130	KD filler plate	\$54
1006-103	Full keeper shims	\$14
1006-105	Trim enhancer (BLK)	\$38

How to Order Specify quantity and the following information. Order related products separately.

SERIES	MODEL	FAIL SAFE/SECURE	FINISH*	OPTION(S)
1006	—	– F	– 630	– LBM
1006 Universal Electric Strike Faceplates ordered separately	<p>CS** Complete Electric Strike; includes the SMART Pac® III and J, KD, KM, HM, and AD faceplates</p> <p>CLB Complete Electric Strike for latchbolt locks; includes the J, K, KD, and KM faceplates</p> <p>CDB** Complete Electric Strike for Deadbolt Locks; includes the HM and AD faceplates</p> <p>CAS Complete Electric Strike for Locks with Continuous Deadbolt Recature; includes the ND and NM faceplates</p>	<p>F Fail Safe/Secure</p> <p>(blank) Fail Secure (standard)</p>	<p>605 Bright Brass</p> <p>606 Satin Brass</p> <p>612 Satin Bronze</p> <p>613 Bronze Toned</p> <p>629 Bright Stainless Steel</p> <p>630 Satin Stainless Steel</p> <p>BLK Black</p>	<p>LBM Latchbolt Monitor</p> <p>LBSM Latchbolt Strike Monitor</p>

*Complete Pacs are only available in the 630 finish. **Complete Pacs with deadbolts are not available with monitoring options.

1500C Complete Pacs for Latchbolt Locks

MODEL	DESCRIPTION	605	606	612	613E	629	630	BSP
1500C		\$774	\$750	\$750	\$699	\$774	\$624	\$699
1500C-LM	Lock monitors	\$879	\$855	\$855	\$804	\$879	\$729	\$804
1500C-DLM	Dual lock monitors	\$984	\$960	\$960	\$909	\$984	\$834	\$909
1500C-LMS	Lock monitors & strike monitors	\$894	\$870	\$870	\$819	\$894	\$744	\$819
1500C-DLMS	Dual lock monitors & strike monitors	\$999	\$975	\$975	\$924	\$999	\$849	\$924



1500 Electric Strike Bodies

MODEL	DESCRIPTION	605	606	612	613E	629	630	BSP
1500		\$669	\$655	\$655	\$620	\$669	\$575	\$620
1500-LM	Lock monitor	\$774	\$760	\$760	\$725	\$774	\$680	\$725
1500-DLM	Dual lock monitors	\$879	\$865	\$865	\$830	\$879	\$785	\$830
1500-LMS	Lock monitor & strike monitor	\$789	\$775	\$775	\$740	\$789	\$695	\$740
1500-DLMS	Dual lock monitors & strike monitor	\$894	\$880	\$880	\$845	\$894	\$800	\$845

1500 Faceplates

MODEL	DESCRIPTION	605	606	612	613E	629	630	BSP
1LB	Kit includes 1J, 1K, 1KD and 1KM faceplates	\$105	\$95	\$95	\$79	\$105	\$49	\$79
1LB-2	Kit includes 1J-2 & 1KM-2 faceplates	\$136	\$129	\$129	\$111	\$136	\$81	\$111

Accessories

ITEM	DESCRIPTION	PRICE
157	Torx screws	\$16
OPT-1SRK	Optional spring replacement kit	\$51
OPT-1LM	Optional upgrade kit includes single lock monitor	\$119
OPT-1DLM	Optional kit includes dual lock monitors	\$237
MOD-1SOL	Solenoid replacement module	\$323

MODEL	DESCRIPTION	605	606	612	613E	629	630	BSP
1500-104	Lip extension trim adapter	\$94	\$87	\$87	\$71	\$94	\$45	\$71
1500-106	4500 filler plates and trim enhancer kit	\$86	\$80	\$80	\$64	\$86	\$38	\$64

How to Order Specify quantity and the following information. Order related products separately.

SERIES	MODEL	FINISH	OPTION(S)*
1500	—	— 630	— LM
1500 Universal Electric Strike faceplate option kits ordered separately	C Complete Electric Strike; includes 1LB faceplate kit for latchbolts	605 Bright Brass 606 Satin Brass 612 Satin Bronze 613E Dark Oxidized Satin Bronze Powder 629 Bright Stainless Steel 630 Satin Stainless Steel BSP Black Suede Powder	LM Lock Monitor DLM Dual Lock Monitor LMS Lock Monitor and Strike Monitor DLMS Dual Lock Monitors and Strike Monitor

*LMS/DLMS factory installed only option.

1600CLB Complete Pacs for Latchbolt Locks

MODEL	DESCRIPTION	605	606	612	613E	629	630	BSP
1600-CLB		\$774	\$750	\$750	\$699	\$774	\$624	\$699
1600-CLB-LM	Lock monitor	\$879	\$855	\$855	\$804	\$879	\$729	\$804
1600-CLB-DLM	Dual lock monitor	\$984	\$960	\$960	\$909	\$984	\$834	\$909
1600-CLB-LMS	Lock monitor & strike monitor	\$894	\$870	\$870	\$819	\$894	\$744	\$819
1600-CLB-DLMS	Dual lock monitors & strike monitor	\$999	\$975	\$975	\$924	\$999	\$849	\$924

1600CDB Complete Pacs for Locks with Deadbolts

MODEL	DESCRIPTION	605	606	612	613E	629	630	BSP
1600-CDB		\$774	\$750	\$750	\$699	\$774	\$624	\$699
1600-CDB-LM	Lock monitor	\$879	\$855	\$855	\$804	\$879	\$729	\$804
1600-CDB-DLM	Dual lock monitors	\$984	\$960	\$960	\$909	\$984	\$834	\$909
1600-CDB-LMS	Lock monitor & strike monitor	\$894	\$870	\$870	\$819	\$894	\$744	\$819
1600-CDB-DLMS	Dual lock monitors & strike monitor	\$999	\$975	\$975	\$924	\$999	\$849	\$924

1600CS Complete Pacs for Latchbolts & Deadbolts

MODEL	DESCRIPTION	605	606	612	613E	629	630	BSP
1600-CS		\$879	\$845	\$845	\$778	\$879	\$673	\$778
1600-CS-LM	Lock monitor	\$984	\$950	\$950	\$883	\$984	\$778	\$883
1600-CS-DLM	Dual lock monitors	\$1089	\$1055	\$1055	\$988	\$1089	\$883	\$988
1600-CS-LMS	Lock monitor & strike monitor	\$999	\$965	\$965	\$898	\$999	\$793	\$898
1600-CS-DLMS	Dual lock monitors & strike monitor	\$1104	\$1070	\$1070	\$1003	\$1104	\$898	\$1003

1600 Electric Strike Bodies

MODEL	DESCRIPTION	605	606	612	613E	629	630	BSP
1600		\$669	\$655	\$655	\$620	\$669	\$575	\$620
1600-LM	Lock monitor	\$774	\$760	\$760	\$725	\$774	\$680	\$725
1600-DLM	Dual lock monitors	\$879	\$865	\$865	\$830	\$879	\$785	\$830
1600-LMS	Lock monitor & strike monitor	\$789	\$775	\$775	\$740	\$789	\$695	\$740
1600-DLMS	Dual lock monitors & strike monitor	\$894	\$880	\$880	\$845	\$894	\$800	\$845

1600 Faceplates

MODEL	DESCRIPTION	605	606	612	613E	629	630	BSP
1LB	Kit includes 1J, 1K, 1KD and 1KM faceplates	\$105	\$95	\$95	\$79	\$105	\$49	\$79
1LB-2	Kit includes 1J-2 & 1KM-2 faceplates	\$136	\$129	\$129	\$111	\$136	\$81	\$111
1DB	Kit includes faceplates and brackets to make 1N, 1ND, 1NM and 1NTD options	\$105	\$95	\$95	\$79	\$105	\$49	\$79
1DB-2	Kit includes faceplates and brackets to make 1N-2 option	\$132	\$125	\$129	\$111	\$136	\$81	\$111

Accessories

ITEM	DESCRIPTION	PRICE
157	Torx screws	\$16
OPT-1SRK	Optional spring replacement kit	\$51
OPT-1LM	Optional upgrade kit includes single lock monitor	\$119
OPT-1DLM	Optional kit includes dual lock monitors	\$237
MOD-1SOL	Solenoid replacement module	\$323

MODEL	DESCRIPTION	605	606	612	613E	629	630	BSP
1600-104	1600 Lip extension trim adapter	\$94	\$87	\$87	\$71	\$94	\$45	\$71
1600-106	1600 adapter and trim enhancer kit	\$86	\$80	\$80	\$64	\$86	\$38	\$64

How to Order Specify quantity and the following information. Order related products separately.

SERIES	MODEL	FINISH	OPTION(S)*
1600	– CS	– 630	– LM
1600 Universal Electric Strike; Faceplate option kits ordered separately	CS Complete Electric Strike; includes 1LB faceplate kit for latchbolts and 1DB faceplate kit for deadbolts	605 Bright Brass	LM Lock Monitor
	CLB Complete Electric Strike for Latchbolt Locks; includes 1LB faceplate kit for latchbolts	606 Satin Brass	DLM Dual Lock Monitor
		612 Satin Bronze	LMS Lock Monitor and Strike Monitor
	CDB Complete Electric Strike for Deadbolt Locks; includes 1DB faceplate kit for deadbolts	613E Dark Oxidized Satin Bronze Powder	DLMS Dual Lock Monitors and Strike Monitor
		629 Bright Stainless Steel	
		630 Satin Stainless Steel	
		BSP Black Suede Powder	

*LMS/DLMS factory installed only option.

h.e.s.

ASSA ABLOY



ES100-15 Aperio™ Wireless Electric Strike with Card Reader

MODEL	DESCRIPTION	630
ES100-15LH	Aperio 1500 Wireless Electric Strike 1:1 Kit Latchbolts	\$1616
ES100-15LMH	Aperio 1500 Monitored Wireless Electric Strike 1:1 Kit Latchbolts	\$1725

1500 Faceplates

MODEL	DESCRIPTION	605	606	612	613E	629	630	BSP
1LB	Kit includes 1J, 1K, 1KD and 1KM faceplates	\$105	\$95	\$95	\$79	\$105	\$49	\$79
1LB-2	Kit includes 1J-2 & 1KM-2 faceplates	\$136	\$129	\$129	\$111	\$136	\$81	\$111

1500 Accessories

MODEL	DESCRIPTION	605	606	612	613E	629	630	BSP
1500-104	Lip extension trim adapter	\$94	\$87	\$87	\$71	\$94	\$45	\$71
1500-106	4500 filler plates and trim enhancer kit	\$86	\$80	\$80	\$64	\$86	\$38	\$64

ES100-15 Demo Mounts

ITEM	DESCRIPTION	PRICE
DEMO-ES100-15L-IPS-BSP	ES100-15 Aperio™ Wireless Electric Strike Demo Mount For Latchbolts With Black Suede Powdercoat Finish and HID multiCLASS SE Card Reader, HID NFC Mobile Access Enabled	\$1200

ES100-16 Aperio™ Wireless Electric Strike with Card Reader

MODEL	DESCRIPTION	630
ES100-16LH	Aperio 1600 Wireless Electric Strike 1:1 Kit Latchbolts	\$1616
ES100-16LMH	Aperio 1600 Monitored Wireless Electric Strike 1:1 Kit Latchbolts	\$1725
ES100-16SH	Aperio 1600 Wireless Electric Strike 1:1 Kit Latchbolts and Deadbolts	\$1665
ES100-16SMH	Aperio 1600 Monitored Wireless Electric Strike 1:1 Kit Latchbolts and Deadbolts	\$1774

1600 Faceplates

MODEL	DESCRIPTION	605	606	612	613E	629	630	BSP
1LB	Kit includes 1J, 1K, 1KD and 1KM faceplates	\$105	\$95	\$95	\$79	\$105	\$49	\$79
1LB-2	Kit includes 1J-2 & 1KM-2 faceplates	\$136	\$129	\$129	\$111	\$136	\$81	\$111
1DB	Kit includes faceplates and brackets to make 1N, 1ND, 1NM and 1NTD options	\$105	\$95	\$95	\$79	\$105	\$49	\$79
1DB-2	Kit includes faceplates and brackets to make 1N-2 option	\$132	\$125	\$129	\$111	\$136	\$81	\$111

1600 Accessories

MODEL	DESCRIPTION	605	606	612	613E	629	630	BSP
1600-104	1600 Lip extension trim adapter	\$94	\$87	\$87	\$71	\$94	\$45	\$71
1600-106	1600 adapter and trim enhancer kit	\$86	\$80	\$80	\$64	\$86	\$38	\$64

ES100 Accessories

ITEM	DESCRIPTION	PRICE
157	Torx screws	\$16
OPT-1SRK	Optional spring replacement kit	\$51
OPT-1LM	Optional upgrade kit includes single lock monitor	\$119
EXT-10-ANT	ASSA ABLOY Aperio™ Wireless Hub External Antenna (3, 9 DBi Omni-Directional)	\$55

How to Order *Specify quantity and the following information. Order related products separately.*

PRODUCT FAMILY	COMMUNICATION	MODEL SERIES	FACEPLATES	OPTIONS	CARD TECHNOLOGY	STRIKE FINISH
ES	100	- 15	L	H	-IPS	- 630
Electric Strike	100 Aperio Wireless	15 Reader and 1500 Strike 16 Reader and 1600 Strike	L Complete Pac for Latchbolts S* Complete Pac for Latchbolts and Deadbolts	H** Wholesale Kit MH** Wholesale Kit with Monitoring for High Security	IPS RFID (HID multiCLASS SE)	630 Satin Stainless Steel

*Available with 1600 Only. **Only available with L or S Complete Pac Options in 630 Finish.

HES ES100: The HES ES100 Electric Strike is available as either a pre-paired lock and hub kit (no certification required) or as a field configurable component (requires Aperio® Certified Integrator certification). Pre-paired kits support limited features. Field configured devices are required in order to support all options. Visit [IntelligentOpenings.com](https://www.intelligentopenings.com) to learn more.



4500C Complete Pacs for Latchbolt Locks

MODEL	DESCRIPTION	605	606	612	613	629	630
4500C		\$818	\$804	\$804	\$765	\$818	\$699
4500C-LBM	Latchbolt monitor	\$948	\$934	\$934	\$895	\$948	\$829
4500C-LBSM	Latchbolt strike monitor	\$958	\$944	\$944	\$905	\$958	\$839



Accessories

ITEM	DESCRIPTION	PRICE
157	Torx screws	\$16
4500-105	Trim enhancer (BLK)	\$38
4500-110	Replacement strike plate	\$117
4500-131	Filler block	\$49
4501-1/2	1/2" stackable lip extension	\$65
4501-1	1" stackable lip extension	\$72

How to Order *Specify quantity and the following information. Order related products separately.*

SERIES	FINISH*	OPTION(S)
4500C	– 630	– LBM
4500C Complete Electric Strike; includes faceplates for cylindrical and mortise locks	605 Bright Brass	LBM Latchbolt Monitor
	606 Satin Brass	LBSM Latchbolt Strike Monitor
	612 Satin Bronze	
	613 Bronze Toned	
	629 Bright Stainless Steel	
	630 Satin Stainless Steel	

5000C, 5200C Complete Pacs for Latchbolt Locks

MODEL	DESCRIPTION	630
5000C		\$219
5000C-LBM	Latchbolt monitor	\$304
5200C		\$229
5200C-LBM	Latchbolt monitor	\$314
5200C-LBSM	Latchbolt strike monitor	\$324



5000, 5200 Electric Strike Bodies

MODEL	DESCRIPTION	630
5000		\$195
5000-LBM	Latchbolt monitor	\$280
5200		\$205
5200-LBM	Latchbolt monitor	\$290
5200-LBSM	Latchbolt strike monitor	\$300

Faceplates

MODEL	DESCRIPTION	605	606	612	613	629	630	BSP
501	For use with cylindrical locksets in ANSI metal jambs	\$74	\$54	\$54	\$46	\$74	\$22	\$46
501A	For use with cylindrical locksets or spring latches in aluminum frames. Includes universal mounting tabs.	\$80	\$57	\$57	\$50	\$80	\$27	\$50
502	For use with cylindrical locksets or spring latches in aluminum frames. Includes universal mounting tabs	\$96	\$79	\$79	\$66	\$96	\$47	\$66
503	For use with cylindrical locksets or spring latches in aluminum frames. Includes universal mounting tabs	\$96	\$79	\$79	\$66	\$96	\$47	\$66
504	For use with cylindrical locksets. Four-point mounting for wood installations.	\$96	\$79	\$79	\$66	\$96	\$47	\$66

Accessories

ITEM	DESCRIPTION	PRICE
157	Torx screws	\$16
5000-105	Trim enhancer (goof plate)	\$34
5104-1/2	1/2" stackable lip extension	\$59
5104-1	1" stackable lip extension	\$67
5104-1-1/4	1-1/4" stackable lip extension	\$69
5200 105	Trim enhancer (goof plate)	\$34
5200-500	Filler block	\$59
5204-1/2	1/2" stackable lip extension	\$59
5204-1	1" stackable lip extension	\$67
5204-1-1/4	1-1/4" stackable lip extension	\$69

How to Order Specify quantity and the following information. Order related products separately.

SERIES	MODEL	FINISH	OPTION(S)*
5000, 5200	—	— 630	— LBM
5000, 5200	Universal Electric Strike; faceplate option kits ordered separately	C* Complete Electric Strike; includes the 501 and 501A faceplates	LBM Latchbolt Monitor LBSM** Latchbolt Strike Monitor 605 Bright Brass 606 Satin Brass 612 Satin Bronze 613 Bronze Powder 629 Bright Stainless Steel 630 Satin Stainless Steel BLK Black

*Complete Pacs are only available in the 630 finish. **LBSM only available with 5200.

7000C Complete Pacs for Latchbolt Locks

MODEL	DESCRIPTION	630
7000C		\$363
7000C-LBM	Latchbolt monitor	\$483

7000 Electric Strike Bodies

MODEL	DESCRIPTION	630
7000		\$298
7000-LBM	Latchbolt monitor	\$418

Faceplates

MODEL	DESCRIPTION	605	606	612	613E	629	630	BLK
791	Cylindrical lock faceplate	\$117	\$100	\$100	\$86	\$117	\$65	\$86
792	Cylindrical lock faceplate	\$117	\$100	\$100	\$86	\$117	\$65	\$86
783S	Rim exit device faceplate				\$251		\$176	
786S	Rim exit device faceplate				\$285		\$195	
789S	Rim exit device faceplate				\$285		\$195	

Accessories

ITEM	DESCRIPTION	PRICE
157	Torx screws	\$16
7000-104	Lip extension trim adapter (791 & 792 options only)	\$36
7000-105	Trim enhancer (goof plate) (791 & 792 options only)	\$36
7000-106	Keeper pocket adapter (783S & 789S options only)	\$35
7000-107	Full keeper shim pack	\$20
7000-108	Spacer plate (783S & 789S options, black finish only)	\$38
7000-110	Replacement strike plate (701 option only)	\$120
SMB	Surface mounting box	\$232



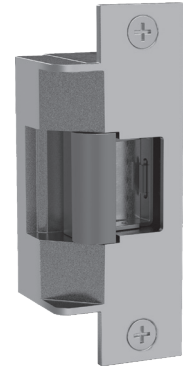
How to Order Specify quantity and the following information. Order related products separately.

SERIES	MODEL	FINISH*	OPTION(S)
7000	—	— 630	— LBM
		791 and 792 Options	783S, 786S, 789S Options
7000 Universal Electric Strike; faceplates ordered separately	C* Complete Electric Strike; includes the 791 and 792 faceplates (blank) Strike Body Only	605 Bright Brass 606 Satin Brass 612 Satin Bronze 613E Dark Oxidized Satin Bronze Powder 629 Bright Stainless Steel 630 Satin Stainless Steel BLK Black	613E Dark Oxidized Satin Bronze Powder 630 Satin Stainless Steel LBM Latchbolt Monitor

*Complete Pacs are only available in 630 finish.

7501 Electric Strike

MODEL	DESCRIPTION	605	606	612	613	629	630
7501		\$802	\$785	\$785	\$769	\$802	\$702
7501-LBM	Latchbolt monitor	\$922	\$905	\$905	\$889	\$922	\$822



How to Order Specify quantity and the following information. Order related products separately.

SERIES	FINISH*	OPTION(S)
7501	– 630	– LBM
7501 Universal Electric Strike; includes faceplate for cylindrical locksets	605 Bright Brass 606 Satin Brass 612 Satin Bronze 613 Bronze Toned 629 Bright Stainless Steel 630 Satin Stainless Steel	LBM Latchbolt Monitor

8000C, 8300C Complete Pac for Latchbolt Locks

MODEL	DESCRIPTION	630
8000C		\$266
8000C-LBM	Latchbolt monitor	\$386
8300C		\$602
8300C-LBM	Latchbolt monitor	\$722



8000, 8300 Electric Strike Bodies

MODEL	DESCRIPTION	630
8000		\$233
8000-LBM	Latchbolt monitor	\$353
8300		\$569
8300-LBM	Latchbolt monitor	\$689

Faceplates

MODEL	DESCRIPTION	605	606	612	613	629	630	BLK
801	For use with: Cylindrical locksets in ANSI metal jambs, with latchbolts up to 5/8" throw	\$86	\$70	\$70	\$56	\$86	\$33	\$56
801A	For use with: Cylindrical locksets with latchbolts up to 5/8" throw. Includes universal mounting tabs. Aluminum frames.	\$92	\$75	\$75	\$61	\$92	\$40	\$61
801E	For use with: Extended lip for 'knock-down' style frame installations. For use with cylindrical latchbolts up to 5/8" throw.	\$86	\$70	\$70	\$56	\$86	\$34	\$56
802	For use with: Cylindrical locksets with latchbolts up to 5/8" throw. Includes universal mounting tabs. Aluminum frames.	\$107	\$88	\$88	\$76	\$107	\$53	\$84
803	For use with: Cylindrical locksets with latchbolts up to 5/8" throw. Includes universal mounting tabs. Aluminum frames.	\$107	\$88	\$88	\$76	\$107	\$53	\$76
805	For use with: Cylindrical locksets. For use with latchbolts up to 5/8" throw Four point mounting for wood installations.	\$107	\$88	\$88	\$76	\$107	\$53	\$76

How to Order Specify quantity and the following information. Order related products separately.

SERIES	MODEL	FINISH*	OPTION(S)
8000	—	– 630	– LBM
8000, 8300 Universal Electric Strike; faceplates ordered separately	C Complete Electric Strike; includes the 801 and 801A faceplates (blank) Strike Body Only	605 Bright Brass 606 Satin Brass 612 Satin Bronze 613 Bronze Toned 629 Bright Stainless Steel 630 Satin Stainless Steel BLK Black	LBM Latchbolt Monitor

*Complete Pacs are only available in 630 finish.

8500 Electric Strike Bodies

MODEL	DESCRIPTION	605	606	612	613	629	630
8500		\$646	\$634	\$634	\$634	\$646	\$577
8500-LBM	Latchbolt monitor	\$766	\$754	\$754	\$754	\$766	\$697
8500-LBSM	Latchbolt strike monitor	\$776	\$764	\$764	\$764	\$776	\$707

Faceplates

MODEL	DESCRIPTION	605	606	612	613	629	630
851M	For use with: Mortise locksets. Compatible locksets: Sargent 8100, 8200, 9200	\$98	\$80	\$80	\$70	\$98	\$45
852K	For use with: Mortise locksets. Compatible locksets: Corbin Russwin ML 2000	\$97	\$79	\$79	\$69	\$97	\$44
852L	For use with: Mortise locksets. Compatible locksets: Schlage L9000	\$98	\$80	\$80	\$70	\$98	\$44
852M	For use with: Mortise locksets. Compatible locksets: Yale 8700 (manufactured after 2005) & 8800, Accurate, Falcon, Kaba Ilco/Unican	\$98	\$80	\$80	\$70	\$98	\$45



How to Order Specify quantity and the following information. Order related products separately.

SERIES	FINISH*	OPTION(S)
8500	- 630	- LBM
8500 Universal Electric Strike; faceplates ordered separately	605 Bright Brass 606 Satin Brass 612 Satin Bronze 613 Bronze Toned 629 Bright Stainless Steel 630 Satin Stainless Steel	LBM Latchbolt Monitor LBSM Latchbolt Strike Monitor

UNL, MUNL Electric Strike for Latchbolt Locks

MODEL	605	613	626
UNL-12		\$637	\$572
UNL-24		\$637	\$572
MUNL-12	\$816	\$856	\$797
MUNL-24	\$816	\$856	\$797

Accessories

ITEM	DESCRIPTION	PRICE
FSUNL-12	Fail Safe/Fail Secure UnLatch Module, 12 VDC	\$141
FSUNL-24	Fail Safe/Fail Secure UnLatch Module, 24 VDC	\$141

How to Order Specify quantity and the following information. Order related products separately.

SERIES	FAIL SAFE/SECURE	VOLTAGE	FINISH
MUNL	—	- 24	- 10B
UNL Cylindrical	(blank) Fail Secure (Standard)	12 12 Volt	(blank) US26D/626—Stainless Steel
MUNL Mortise	Note: FSUNL for field-selectable fail safe operation ordered separately	24 24 Volt	10B US10B/613—Oil Rubbed Bronze US3 US03/605—Bright Brass



9400, 9500, 9600, 9700, 9800 Surface Mounted Electric Strikes for Rim Exit Devices

MODEL	DESCRIPTION	605	606	612	613	613E	628E	629	630	BSP
9400		\$674	\$655	\$655	\$655	\$620		\$674	\$570	\$620
9400-LBM	Latchbolt monitor	\$784	\$765	\$765	\$765	\$730		\$784	\$680	\$730
9400-LBSM	Latchbolt strike monitor	\$794	\$775	\$775	\$775	\$740		\$794	\$690	\$740
9500		\$779	\$760	\$760	\$760	\$725		\$779	\$675	\$725
9500-LBM	Latchbolt monitor	\$889	\$870	\$870	\$870	\$835		\$889	\$785	\$835
9500-LBSM	Latchbolt strike monitor	\$899	\$880	\$880	\$880	\$845		\$899	\$795	\$845
9600		\$674	\$655	\$655	\$655	\$620		\$674	\$570	\$620
9600-LBM	Latchbolt monitor	\$784	\$765	\$765	\$765	\$730		\$784	\$680	\$730
9600-LBSM	Latchbolt strike monitor	\$794	\$775	\$775	\$775	\$740		\$794	\$690	\$740
9700		\$779	\$760	\$760	\$760	\$725		\$779	\$675	\$725
9700-LBM	Latchbolt monitor	\$889	\$870	\$870	\$870	\$835		\$889	\$785	\$835
9700-LBSM	Latchbolt strike monitor	\$899	\$880	\$880	\$880	\$845		\$899	\$795	\$845
9800		\$779	\$760			\$725	\$725	\$779	\$675	\$725

Accessories

ITEM	DESCRIPTION	PRICE
9000-MTK	Metal template installation kit	\$87
SMB	Surface mounting box	\$232

Spacer Plates/ Brackets

MODEL	DESCRIPTION	613E	628	628E	630	BSP
9000-108	1/8" Spacer plate	\$50		\$50	\$36	\$50
9000-116	1/16" Spacer plate	\$50		\$50	\$36	\$50
9000-ASB	Aluminum spacer bracket	\$119	\$109			\$119

How to Order *Specify quantity and the following information. Order related products separately.*

SERIES	FINISH	OPTION(S)
9600	- 630	- LBM
9400 Surface Mounted Electric Strike for 1/2" Pullman Exit Device; no faceplates required	605 Bright Brass 606 Satin Brass	LBM Latchbolt Monitor LBSM Latchbolt Strike Monitor
9500 Surface Mounted Electric Strike for 3/4" Pullman, fire rated; no faceplates required	612 Satin Bronze 613 Bronze Toned	
9600 Surface Mounted Electric Strike for 3/4" Pullman Rim Exit Devices, non-fire rated; no faceplates required	613E Dark Oxidized Satin Bronze 629 Bright Stainless Steel	
9700 Surface Mounted Electric Strike for Corbin Russwin SecureBolt® and Yale SquareBolt® Rim Exit Devices; no faceplates required	628E* Satin Aluminum Powder 630 Satin Stainless Steel	
9800 Surface Mounted Electric Strike for Adams Rite® Starwheel and Interlocking Rim Exit Devices; no faceplates required	BSP Black Suede Powder	

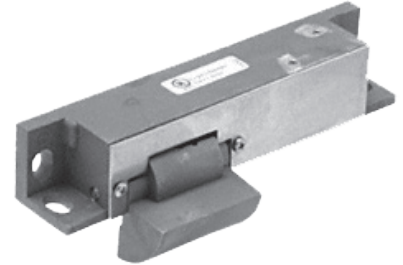
*Only Available on 9800



Folger Adam SB:310-1(1/2)

Electric Strike Bodies

ITEM	DESCRIPTION	PRICE
SB:310-1(1/2)-12D		\$657
SB:310-1(1/2)-24D		\$657
SB:310-1(1/2)-F-12D	Fail safe	\$657
SB:310-1(1/2)-F-24D	Fail safe	\$657
SB:310-1(1/2)-12D-LCBMA		\$824
SB:310-1(1/2)-24D-LCBMA		\$824
SB:310-1(1/2)-F-12D-LCBMA	Fail safe	\$824
SB:310-1(1/2)-F-24D-LCBMA	Fail safe	\$824



Folger Adam SB:310-1(3/4)

Electric Strike Bodies

ITEM	DESCRIPTION	PRICE
SB:310-1(3/4)-12D		\$657
SB:310-1(3/4)-24D		\$657
SB:310-1(3/4)-F-12D	Fail safe	\$657
SB:310-1(3/4)-F-24D	Fail safe	\$657
SB:310-1(3/4)-12D-LCBMA		\$824
SB:310-1(3/4)-24D-LCBMA		\$824
SB:310-1(3/4)-F-12D-LCBMA	Fail safe	\$824
SB:310-1(3/4)-F-24D-LCBMA	Fail safe	\$824

Folger Adam SB:310-1(1)

Electric Strike Bodies

ITEM	DESCRIPTION	PRICE
SB:310-1(1)-12D		\$657
SB:310-1(1)-24D		\$657
SB:310-1(1)-F-12D	Fail safe	\$657
SB:310-1(1)-F-24D	Fail safe	\$657
SB:310-1(1)-12D-LCBMA		\$824
SB:310-1(1)-24D-LCBMA		\$824
SB:310-1(1)-F-12D-LCBMA	Fail safe	\$824
SB:310-1(1)-F-24D-LCBMA	Fail safe	\$824

Folger Adam SB:310-1(PK)

Electric Strike Bodies

ITEM	DESCRIPTION	PRICE
SB:310-1(PK)-12D		\$657
SB:310-1(PK)-24D		\$657
SB:310-1(PK)-F-12D	Fail safe	\$657
SB:310-1(PK)-F-24D	Fail safe	\$657
SB:310-1(PK)-12D-LCBMA		\$824
SB:310-1(PK)-24D-LCBMA		\$824
SB:310-1(PK)-F-12D-LCBMA	Fail safe	\$824
SB:310-1(PK)-F-24D-LCBMA	Fail safe	\$824

Folger Adam SB:310-1(SK)

Electric Strike Bodies

ITEM	DESCRIPTION	PRICE
SB:310-1(SK)-12D		\$683
SB:310-1(SK)-24D		\$683
SB:310-1(SK)-F-12D	Fail safe	\$683
SB:310-1(SK)-F-24D	Fail safe	\$683
SB:310-1(SK)-12D-LCBMA		\$850
SB:310-1(SK)-24D-LCBMA		\$850
SB:310-1(SK)-F-12D-LCBMA	Fail safe	\$850
SB:310-1(SK)-F-24D-LCBMA	Fail safe	\$850

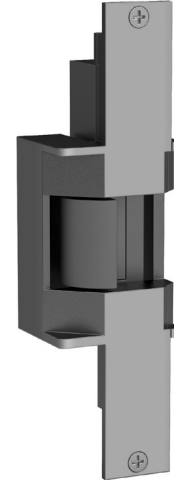
How to Order Specify quantity and the following information. Order related products separately.

PREFIX	SERIES	KEEPER STYLE	FAIL SAFE/SECURE	VOLTAGE	OPTION(S)
SB	310-1	(3/4)	- F	- 24D	- LCBMA
Strike BODY ONLY					
SB Strike Body	310-1 Strike Body Only	(1/2) 1/2" keeper (3/4) 3/4" keeper (1) 1" keeper (PK) For use with 3/4" Pullman style latchbolts (SK) For use with Squarebolt® style rim exit devices	(blank) Fail Secure (Standard) F Fail Safe	12D 12 Volt 24D 24 Volt	LCBMA Latchbolt & locking cam monitor with auxiliary switch



Folger Adam 310-2 Electric Strike for Latchbolt Locks

MODEL	DESCRIPTION	605	606	612	613	629	630
310-2-12D		\$975	\$936	\$936	\$883	\$975	\$838
310-2-24D		\$975	\$936	\$936	\$883	\$975	\$838
310-2-F-12D	Fail safe	\$975	\$936	\$936	\$883	\$975	\$838
310-2-F-24D	Fail safe	\$975	\$936	\$936	\$883	\$975	\$838
310-2-12D-LCBMA		\$1142	\$1102	\$1102	\$1060	\$1142	\$1004
310-2-24D-LCBMA		\$1142	\$1102	\$1102	\$1060	\$1142	\$1004
310-2-F-12D-LCBMA	Fail safe	\$1142	\$1102	\$1102	\$1060	\$1142	\$1004
310-2-F-24D-LCBMA	Fail safe	\$1142	\$1102	\$1102	\$1060	\$1142	\$1004



Folger Adam 310-2 3/4 Electric Strike for Latchbolt Locks

MODEL	DESCRIPTION	605	606	612	613	629	630
310-2 3/4-12D		\$1079	\$1043	\$1043	\$1002	\$1077	\$956
310-2 3/4-24D		\$1079	\$1043	\$1043	\$1002	\$1077	\$956
310-2 3/4-F-12D	Fail safe	\$1079	\$1043	\$1043	\$1002	\$1077	\$956
310-2 3/4-F-24D	Fail safe	\$1079	\$1043	\$1043	\$1002	\$1077	\$956
310-2 3/4-12D-LCBMA		\$1258	\$1209	\$1209	\$1166	\$1243	\$1121
310-2 3/4-24D-LCBMA		\$1258	\$1209	\$1209	\$1166	\$1243	\$1121
310-2 3/4-F-12D-LCBMA	Fail safe	\$1258	\$1209	\$1209	\$1166	\$1243	\$1121
310-2 3/4-F-24D-LCBMA	Fail safe	\$1258	\$1209	\$1209	\$1166	\$1243	\$1121

Folger Adam 310-2 3/4OB Electric Strike for Latchbolt Locks

MODEL	DESCRIPTION	605	606	612	613	629	630
310-2 3/4OB-12D		\$1321	\$1283	\$1283	\$1244	\$1321	\$1183
310-2 3/4OB-24D		\$1321	\$1283	\$1283	\$1244	\$1321	\$1183
310-2 3/4OB-F-12D	Fail safe	\$1321	\$1283	\$1283	\$1244	\$1321	\$1183
310-2 3/4OB-F-24D	Fail safe	\$1321	\$1283	\$1283	\$1244	\$1321	\$1183

Folger Adam 310-3-1 Electric Strike for Latchbolt Locks & Deadbolts

MODEL	DESCRIPTION	605	606	612	613	629	630
310-3-1-12D		\$1265	\$1245	\$1245	\$1203	\$1265	\$1198
310-3-1-24D		\$1265	\$1245	\$1245	\$1203	\$1265	\$1198
310-3-1-F-12D	Fail safe	\$1265	\$1245	\$1245	\$1203	\$1265	\$1198
310-3-1-F-24D	Fail safe	\$1265	\$1245	\$1245	\$1203	\$1265	\$1198
310-3-1-12D-LCBMA		\$1442	\$1411	\$1411	\$1371	\$1442	\$1364
310-3-1-24D-LCBMA		\$1442	\$1411	\$1411	\$1371	\$1442	\$1364
310-3-1-F-12D-LCBMA	Fail safe	\$1442	\$1411	\$1411	\$1371	\$1442	\$1364
310-3-1-F-24D-LCBMA	Fail safe	\$1442	\$1411	\$1411	\$1371	\$1442	\$1364

How to Order *Specify quantity and the following information. Order related products separately.*

SERIES	FAIL SAFE/SECURE	VOLTAGE	FINISH	OPTION(S)
310-2	- F	- 24D	- 613	- LCBMA
KEEPER STYLE				
310-2 1/2" keeper standard; for up to a 5/8" throw latchbolt	(blank) Fail Secure (Standard)	12D 12 Volt 24D 24 Volt	605 Bright Brass 606 Satin Brass 612 Satin Bronze 613 Bronze Toned 629 Bright Stainless Steel 630 Satin Stainless Steel	LCBMA* Latchbolt & locking cam monitor with auxiliary switch
310-2 3/4 3/4" keeper standard; for up to a 3/4" throw latchbolt without deadbolt	F Fail Safe			
310-2 3/4OB* 3/4" keeper standard; for a pair of doors without a door coordinator				
310-3-1 1" keeper standard; for up to a 3/4" throw latchbolt and a 1" deadbolt				

*LCBMA not available with 310-2 3/4OB.

Faceplates

MODEL	605	606	612	613	629	630
FP-310-2	\$307	\$267	\$267	\$227	\$307	\$182

Faceplates

MODEL	605	606	612	613	629	630
FP-310-2-34	\$421	\$386	\$386	\$344	\$419	\$298

Faceplates

MODEL	605	606	612	613	629	630
FP-310-2-34OB	\$649	\$614	\$619	\$574	\$649	\$524

Faceplates

MODEL	605	606	612	613	629	630
FP-310-3-1	\$606	\$575	\$575	\$535	\$606	\$541

How to Order

PREFIX	SERIES	FINISH
FP	- 310-2 3/4OB	- 630
FACEPLATE ONLY		
FP Faceplate	310-2 1/2" keeper standard; for up to a 5/8" throw latchbolt	605 Bright Brass 606 Satin Brass
	310-2 3/4 3/4" keeper standard; for up to a 3/4" throw latchbolt without deadbolt	612 Satin Bronze 613 Bronze Toned
	310-2 3/4OB 3/4" keeper standard; for a pair of doors without a door coordinator	629 Bright Stainless Steel 630 Satin Stainless Steel
	310-3-1 1" keeper standard; for up to a 3/4" throw latchbolt and a 1" deadbolt	

Folger Adam 310-4 Electric Strike for Pullman Rim Exit Devices

MODEL	DESCRIPTION	605	606	612	613	629	630
310-4-12D		\$1007	\$969	\$969	\$924	\$1007	\$877
310-4-24D		\$1007	\$969	\$969	\$924	\$1007	\$877
310-4-F-12D	Fail safe	\$1007	\$969	\$969	\$924	\$1007	\$877
310-4-F-24D	Fail safe	\$1007	\$969	\$969	\$924	\$1007	\$877
310-4-12D-LCBMA		\$1181	\$1134	\$1134	\$1089	\$1181	\$1041
310-4-24D-LCBMA		\$1181	\$1134	\$1134	\$1089	\$1181	\$1041
310-4-F-12D-LCBMA	Fail safe	\$1181	\$1134	\$1134	\$1089	\$1181	\$1041
310-4-F-24D-LCBMA	Fail safe	\$1181	\$1134	\$1134	\$1089	\$1181	\$1041

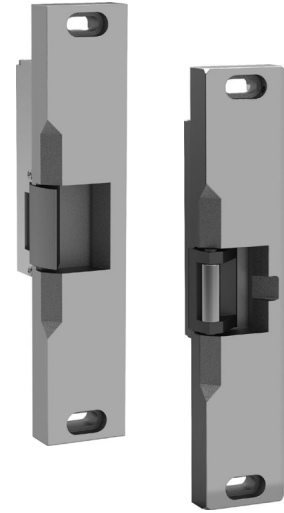
Folger Adam 310-4(S) Electric Strike for Squarebolt® Rim Exit Device

MODEL	DESCRIPTION	605	606	612	613	629	630
310-4(S)-12D		\$1056	\$1019	\$1019	\$977	\$1056	\$931
310-4(S)-24D		\$1056	\$1019	\$1019	\$977	\$1056	\$931
310-4(S)-F-12D	Fail safe	\$1056	\$1019	\$1019	\$977	\$1056	\$931
310-4(S)-F-24D	Fail safe	\$1056	\$1019	\$1019	\$977	\$1056	\$931
310-4(S)-12D-LCBMA		\$1233	\$1197	\$1197	\$1152	\$1233	\$1096
310-4(S)-24D-LCBMA		\$1233	\$1197	\$1197	\$1152	\$1233	\$1096
310-4(S)-F-12D-LCBMA	Fail safe	\$1233	\$1197	\$1197	\$1152	\$1233	\$1096
310-4(S)-F-24D-LCBMA	Fail safe	\$1233	\$1197	\$1197	\$1152	\$1233	\$1096

How to Order Specify quantity and the following information. Order related products separately.

SERIES	FAIL SAFE/SECURE	VOLTAGE	FINISH	OPTION(S)
310-4 (S)	- F	- 24D	- 613	- LCBMA
KEEPER STYLE				
310-4 PK keeper standard; for use with 3/4" Pullman style latchbolts	(blank) Fail Secure (Standard) F Fail Safe	12D 12 Volt 24D 24 Volt	605 Bright Brass 606 Satin Brass 612 Satin Bronze 613 Bronze Toned 629 Bright Stainless Steel 630 Satin Stainless Steel	LCBMA* Latchbolt & locking cam monitor with auxiliary switch
310-4(S) SK keeper standard; for use with Squarebolt® style rim exit devices				

*LCBMA not available with 310-2 3/4OB.



Faceplates

MODEL	605	606	612	613	629	630
FP-310-4	\$349	\$312	\$312	\$265	\$349	\$218

Faceplates

MODEL	605	606	612	613	629	630
FP-310-4-SK	\$381	\$348	\$348	\$304	\$381	\$255

How to Order

PREFIX	SERIES	KEEPER STYLE	FINISH
FP	- 310-4	(SK)	- 630
FACEPLATE ONLY			
FP Faceplate	310-4	(Blank) Keeper standard; for use with 3/4" Pullman style latchbolts (SK) For use with Squarebolt® style rim exit devices	605 Bright Brass 606 Satin Brass 612 Satin Bronze 613 Bronze Toned 629 Bright Stainless Steel 630 Satin Stainless Steel

Folger Adam 310-4-1 Electric Strike for Surface Vertical Rods

MODEL	DESCRIPTION	605	606	612	613	629	630
310-4-1-12D		\$1708	\$1665	\$1665	\$1639	\$1708	\$1639
310-4-1-24D		\$1708	\$1665	\$1665	\$1639	\$1708	\$1639
310-4-1-F-12D	Fail safe	\$1708	\$1665	\$1665	\$1639	\$1708	\$1639
310-4-1-F-24D	Fail safe	\$1708	\$1665	\$1665	\$1639	\$1708	\$1639
310-4-1-12D-LCBMA		\$2008	\$1961	\$1961	\$1934	\$2008	\$1934
310-4-1-24D-LCBMA		\$2008	\$1961	\$1961	\$1934	\$2008	\$1934
310-4-1-F-12D-LCBMA	Fail safe	\$2008	\$1961	\$1961	\$1934	\$2008	\$1934
310-4-1-F-24D-LCBMA	Fail safe	\$2008	\$1961	\$1961	\$1934	\$2008	\$1934



INSTALLATION NOTE: Double-door models are available with four different center-to-center dimensions between latchbolt keepers. Keepers are wide enough to compensate for vertical rod exit bolts, which may be as much as 3/8" (10 mm) off center-to-center dimension, either way. When using an electric strike in conjunction with a vertical rod exit device, it is necessary that:

1. The bottom rod of the exit device be removed or made inoperative
2. The latchbolt of the exit device be the "Pullman" or beveled type
3. The latchbolt be free-latching and remain projected while the door is open. Mechanisms that hold the latchbolt retracted while the door is open, and automatically release it when the door is closed, must be removed or made inoperative.

Folger Adam 310-4-2 Electric Strike for Surface Vertical Rods

MODEL	DESCRIPTION	605	606	612	613	629	630
310-4-2-12D		\$1708	\$1665	\$1665	\$1639	\$1708	\$1639
310-4-2-24D		\$1708	\$1665	\$1665	\$1639	\$1708	\$1639
310-4-2-F-12D	Fail safe	\$1708	\$1665	\$1665	\$1639	\$1708	\$1639
310-4-2-F-24D	Fail safe	\$1708	\$1665	\$1665	\$1639	\$1708	\$1639
310-4-2-12D-LCBMA		\$2008	\$1961	\$1961	\$1934	\$2008	\$1934
310-4-2-24D-LCBMA		\$2008	\$1961	\$1961	\$1934	\$2008	\$1934
310-4-2-F-12D-LCBMA	Fail safe	\$2008	\$1961	\$1961	\$1888	\$2008	\$1934
310-4-2-F-24D-LCBMA	Fail safe	\$2008	\$1961	\$1961	\$1934	\$2008	\$1934

Folger Adam 310-4-3 Electric Strike for Surface Vertical Rods

MODEL	DESCRIPTION	605	606	612	613	629	630
310-4-3-12D		\$1790	\$1748	\$1748	\$1717	\$1790	\$1717
310-4-3-24D		\$1790	\$1748	\$1748	\$1717	\$1790	\$1717
310-4-3-F-12D	Fail safe	\$1790	\$1748	\$1748	\$1717	\$1790	\$1717
310-4-3-F-24D	Fail safe	\$1790	\$1748	\$1748	\$1717	\$1790	\$1717
310-4-3-12D-LCBMA		\$2086	\$2045	\$2045	\$2012	\$2086	\$2012
310-4-3-24D-LCBMA		\$2086	\$2045	\$2045	\$2012	\$2086	\$2012
310-4-3-F-12D-LCBMA	Fail safe	\$2086	\$2045	\$2045	\$2012	\$2086	\$2012
310-4-3-F-24D-LCBMA	Fail safe	\$2086	\$2045	\$2045	\$2012	\$2086	\$2012

Folger Adam 310-4-30 Electric Strike for Surface Vertical Rods

MODEL	DESCRIPTION	605	606	612	613	629	630
310-4-30-12D		\$1790	\$1748	\$1748	\$1717	\$1790	\$1717
310-4-30-24D		\$1790	\$1748	\$1748	\$1717	\$1790	\$1717
310-4-30-F-12D	Fail safe	\$1790	\$1748	\$1748	\$1717	\$1790	\$1717
310-4-30-F-24D	Fail safe	\$1790	\$1748	\$1748	\$1717	\$1790	\$1717
310-4-30-12D-LCBMA		\$2086	\$2045	\$2045	\$2012	\$2086	\$2012
310-4-30-24D-LCBMA		\$2086	\$2045	\$2045	\$2012	\$2086	\$2012
310-4-30-F-12D-LCBMA	Fail safe	\$2086	\$2045	\$2045	\$2012	\$2086	\$2012
310-4-30-F-24D-LCBMA	Fail safe	\$2086	\$2045	\$2045	\$2012	\$2086	\$2012

Faceplates

MODEL	605	606	612	613	629	630
FP-310-4-1	\$507	\$462	\$462	\$453	\$507	\$453

Faceplates

MODEL	605	606	612	613	629	630
FP-310-4-2	\$507	\$462	\$462	\$453	\$507	\$453

Faceplates

MODEL	605	606	612	613	630
FP-310-4-3	\$585	\$543	\$543	\$530	\$530

Faceplates

MODEL	605	606	612	613	630
FP-310-4-30	\$585	\$543	\$543	\$530	\$530

How to Order

PREFIX	SERIES	FINISH
FP	- 310-4-X	- 630
FACEPLATE ONLY		
FP Faceplate	1 For use with vertical rod spacing between 4" and 4-3/4" 2 For use with vertical rod spacing between 4-5/8" and 5-3/8" 30 For use with vertical rod spacing between 2-5/8" and 3-3/8"	605 Bright Brass 606 Satin Brass 612 Satin Bronze 613 Bronze Toned 629 Bright Stainless Steel 630 Satin Stainless Steel

How to Order *Specify quantity and the following information. Order related products separately.*

SERIES	FAIL SAFE/SECURE	VOLTAGE	FINISH	OPTION(S)
310-4-X	F	- 24D	- 612	-LCBMA
ROD SPACING				
1 For use with vertical rod spacing between 4" and 4-3/4"	(blank) Fail Secure (Standard)	12D 12 Volt	605 Bright Brass	LCBMA Latchbolt & locking cam monitor with auxiliary switch
2 For use with vertical rod spacing between 4-5/8" and 5-3/8"		24D 24 Volt	606 Satin Brass	
3 For use with vertical rod spacing between 5-1/4" and 6"	F Fail Safe		612 Satin Bronze	
30 For use with vertical rod spacing between 2-5/8" and 3-3/8"			613 Bronze Toned	
			629 Bright Stainless Steel	
			630 Satin Stainless Steel	

Folger Adam 310-6-1

Electric Strike for Concealed Vertical Rods

MODEL	DESCRIPTION	612	627
310-6-1-12D		\$1926	\$1653
310-6-1-24D		\$1926	\$1653
310-6-1-F-12D	Fail safe	\$1926	\$1653
310-6-1-F-24	Fail safe	\$1926	\$1653
310-6-1-12D-LCBMA		\$2220	\$1965
310-6-1-24D-LCBMA		\$2220	\$1965
310-6-1-F-12D-LCBMA	Fail safe	\$2220	\$1965
310-6-1-F-24D-LCBMA	Fail safe	\$2220	\$1965

Folger Adam 310-6-2

Electric Strike for Concealed Vertical Rods

MODEL	DESCRIPTION	612	627
310-6-2-12D		\$1926	\$1653
310-6-2-24D		\$1926	\$1653
310-6-2-F-12D	Fail safe	\$1926	\$1653
310-6-2-F-24D	Fail safe	\$1926	\$1653
310-6-2-12D-LCBMA		\$2220	\$1965
310-6-2-24D-LCBMA		\$2220	\$1965
310-6-2-F-12D-LCBMA	Fail safe	\$2220	\$1965
310-6-2-F-24D-LCBMA	Fail safe	\$2220	\$1965

Folger Adam 310-6-3

Electric Strike for Concealed Vertical Rods

MODEL	DESCRIPTION	612	627
310-6-3-12D		\$1926	\$1653
310-6-3-24D		\$1926	\$1653
310-6-3-F-12D		\$1926	\$1653
310-6-3-F-24D		\$1926	\$1653
310-6-3-12D-LCBMA		\$2220	\$1965
310-6-3-24D-LCBMA		\$2220	\$1965
310-6-3-F-12D-LCBMA		\$2220	\$1965
310-6-3-F-24D-LCBMA		\$2220	\$1965

Folger Adam 310-6-8

Electric Strike for Concealed Vertical Rods

MODEL	DESCRIPTION	612	627
310-6-8-12D		\$1349	\$992
310-6-8-24D		\$1349	\$992
310-6-8-F-12D	Fail safe	\$1349	\$992
310-6-8-F-24D	Fail safe	\$1349	\$992
310-6-8-12D-LCBMA		\$1536	\$1179
310-6-8-24D-LCBMA		\$1536	\$1179
310-6-8-F-12D-LCBMA	Fail safe	\$1536	\$1179
310-6-8-F-24D-LCBMA	Fail safe	\$1536	\$1179

Folger Adam 310-6-30

Electric Strike for Concealed Vertical Rods

MODEL	DESCRIPTION	612	627
310-6-30-12D		\$1926	\$1653
310-6-30-24D		\$1926	\$1653
310-6-30-F-12D	Fail safe	\$1926	\$1653
310-6-30-F-24D	Fail safe	\$1926	\$1653
310-6-30-12D-LCBMA		\$2220	\$1965
310-6-30-24D-LCBMA		\$2220	\$1965
310-6-30-F-12D-LCBMA	Fail safe	\$2220	\$1965
310-6-30-F-24D-LCBMA	Fail safe	\$2220	\$1965



INSTALLATION NOTE: Double-door models are available with four different center-to-center dimensions between latchbolt keepers. Keepers are wide enough to compensate for vertical rod exit bolts, which may be as much as 3/8" (10 mm) off center-to-center dimension, either way. When using an electric strike in conjunction with a vertical rod exit device, it is necessary that:

1. The bottom rod of the exit device be removed or made inoperative
2. The latchbolt of the exit device be the "Pullman" or beveled type
3. The latchbolt be free-latching and remain projected while the door is open. Mechanisms that hold the latchbolt retracted while the door is open, and automatically release it when the door is closed, must be removed or made inoperative.

Folger Adam 310-6-1— 310-6-30 Electric Strikes for Concealed Vertical Rods **Continued**



How to Order Specify quantity and the following information. Order related products separately.

SERIES	KEEPER STYLE	FAIL SAFE/SECURE	VOLTAGE	FINISH	OPTION(S)
310-6-X	(PK)	- F	- 24D	- 627	- LCBMA
ROD SPACING					
1 For use with vertical rod spacing between 4" and 4-3/4"	(PK) For use with 3/4" Pullman style latchbolts	(blank) Fail Secure (Standard)	12D 12 Volt	612 Satin Bronze	LCBMA Latchbolt & locking cam monitor with auxiliary switch
2 For use with vertical rod spacing between 4-5/8" and 5-3/8"			24D 24 Volt		
3 For use with vertical rod spacing between 5-1/4" and 6"	F Fail Safe	627 Satin Aluminum			
8 For only the active leaf of a pair of doors					
30 For use with vertical rod spacing between 2-5/8" and 3-3/8"					

Faceplates

MODEL	612	627
FP-310-6-1	\$739	\$465

Faceplates

MODEL	612	627
FP-310-6-2	\$739	\$465

Faceplates

MODEL	612	627
FP-310-6-3	\$739	\$465

Faceplates

MODEL	612	627
FP-310-6-8	\$739	\$465

Faceplates

MODEL	612	627
FP-310-6-30	\$739	\$465

How to Order

PREFIX	SERIES	KEEPER STYLE	FINISH
FP	- 310-6-X	(PK)	- 630
FACEPLATE ONLY			
FP Faceplate	1 For use with vertical rod spacing between 4" and 4-3/4" 2 For use with vertical rod spacing between 4-5/8" and 5-3/8" 3 For use with vertical rod spacing between 5-1/4" and 6" 8 For only the active leaf of a pair of doors 30 For use with vertical rod spacing between 2-5/8" and 3-3/8"	(PK) For use with 3/4" Pullman style latchbolts	612 Satin Bronze 627 Satin Aluminum

Folger Adam SB:310-1-1 Electric Strike Bodies

MODEL	DESCRIPTION	630
SB:310-1-1-12D		\$1104
SB:310-1-1-24D		\$1104
SB:310-1-1-F-12D	Fail safe	\$1104
SB:310-1-1-F-24D	Fail safe	\$1104
SB:310-1-1-12D-LCBMA		\$1423
SB:310-1-1-24D-LCBMA		\$1423
SB:310-1-1-F-12D-LCBMA	Fail safe	\$1423
SB:310-1-1-F-24D-LCBMA	Fail safe	\$1423

Folger Adam SB:310-1-2 Electric Strike Bodies

MODEL	DESCRIPTION	630
SB:310-1-2-12D		\$1104
SB:310-1-2-24D		\$1104
SB:310-1-2-F-12D	Fail safe	\$1104
SB:310-1-2-F-24D	Fail safe	\$1104
SB:310-1-2-12D-LCBMA		\$1423
SB:310-1-2-24D-LCBMA		\$1423
SB:310-1-2-F-12D-LCBMA	Fail safe	\$1423
SB:310-1-2-F-24D-LCBMA	Fail safe	\$1423

Folger Adam SB:310-1-3 Electric Strike Bodies

MODEL	DESCRIPTION	630
SB:310-1-3-12D		\$1104
SB:310-1-3-24D		\$1104
SB:310-1-3-F-12D	Fail safe	\$1104
SB:310-1-3-F-24D	Fail safe	\$1104
SB:310-1-3-12D-LCBMA		\$1423
SB:310-1-3-24D-LCBMA		\$1423
SB:310-1-3-F-12D-LCBMA	Fail safe	\$1423
SB:310-1-3-F-24D-LCBMA	Fail safe	\$1423

Folger Adam SB:310-1-30 Electric Strike Bodies

MODEL	DESCRIPTION	630
SB:310-1-30-12D		\$1104
SB:310-1-30-24D		\$1104
SB:310-1-30-F-12D	Fail safe	\$1104
SB:310-1-30-F-24D	Fail safe	\$1104
SB:310-1-30-12D-LCBMA		\$1423
SB:310-1-30-24D-LCBMA		\$1423
SB:310-1-30-F-24D-LCBMA	Fail safe	\$1423
SB:310-1-30-F-12D-LCBMA	Fail safe	\$1423

How to Order Specify quantity and the following information. Order related products separately.

PREFIX	SERIES	ROD SPACING	KEEPER STYLE	FAIL SAFE/SECURE	VOLTAGE	OPTION(S)
SB	- 310-1	- 1	(PK)	- F	- 24D	- LCBMA
STRIKE BODY ONLY						
SB Strike Body	310-1 Strike Body Only	1 For use with vertical rod spacing between 4" and 4-3/4" 2 For use with vertical rod spacing between 4-5/8" and 5-3/8" 3 For use with vertical rod spacing between 5-1/4" and 6" 30 For use with vertical rod spacing between 2-5/8" and 3-3/8"	(PK) For use with Pullman style latchbolts	(blank) Fail Secure (Standard) F Fail Safe	12D 12 Volt 24D 24 Volt	LCBMA Latchbolt & locking cam monitor with auxiliary switch

Folger Adam 712 Electric Strike for Latchbolt Locks

MODEL	DESCRIPTION	605	606	612	613	629	630
712-12D		\$922	\$886	\$886	\$839	\$886	\$791
712-24D		\$922	\$886	\$886	\$839	\$886	\$791
712-F-12D	Fail safe	\$922	\$886	\$886	\$839	\$886	\$791
712-F-24D	Fail safe	\$922	\$886	\$886	\$839	\$886	\$791
712-12D-LBMLCM		\$1091	\$1054	\$1054	\$1007	\$1054	\$960
712-24D-LBMLCM		\$1091	\$1054	\$1054	\$1007	\$1054	\$960
712-F-12D-LBMLCM	Fail safe	\$1091	\$1054	\$1054	\$1007	\$1054	\$960
712-F-24D-LBMLCM	Fail safe	\$1091	\$1054	\$1054	\$1007	\$1054	\$960

Folger Adam 712-75 Electric Strike for Latchbolt Locks

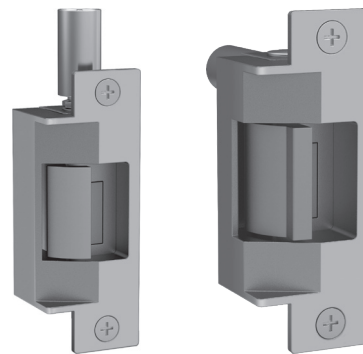
MODEL	DESCRIPTION	605	606	612	613	629	630
712-75-12D		\$955	\$914	\$914	\$875	\$914	\$823
712-75-24D		\$955	\$914	\$914	\$875	\$914	\$823
712-75-F-12D	Fail safe	\$955	\$914	\$914	\$875	\$914	\$823
712-75-F-24D	Fail safe	\$955	\$914	\$914	\$875	\$914	\$823
712-75-12D-LBMLCM		\$1123	\$1081	\$1081	\$1042	\$1081	\$993
712-75-24D-LBMLCM		\$1123	\$1081	\$1081	\$1042	\$1081	\$993
712-75-F-12D-LBMLCM	Fail safe	\$1123	\$1081	\$1081	\$1042	\$1081	\$993
712-75-F-24D-LBMLCM	Fail safe	\$1123	\$1081	\$1081	\$1042	\$1081	\$993

Folger Adam 732 Electric Strike for Latchbolt Locks

MODEL	DESCRIPTION	605	606	612	613	629	630
732-12D		\$922	\$886	\$886	\$839	\$886	\$791
732-24D		\$922	\$886	\$886	\$839	\$886	\$791
732-F-12D	Fail safe	\$922	\$886	\$886	\$839	\$886	\$791
732-F-24D	Fail safe	\$922	\$886	\$886	\$839	\$886	\$791
732-12D-LBMLCM		\$1091	\$1054	\$1054	\$1007	\$1054	\$960
732-24D-LBMLCM		\$1091	\$1054	\$1054	\$1007	\$1054	\$960
732-F-12D-LBMLCM	Fail safe	\$1091	\$1054	\$1054	\$1007	\$1054	\$960
732-F-24D-LBMLCM	Fail safe	\$1091	\$1054	\$1054	\$1007	\$1054	\$960

Folger Adam 732-75 Electric Strike for Latchbolt Locks

MODEL	DESCRIPTION	605	606	612	613	629	630
732-75-12D		\$955	\$914	\$914	\$875	\$914	\$823
732-75-24D		\$955	\$914	\$914	\$875	\$914	\$823
732-75-F-12D	Fail safe	\$955	\$914	\$914	\$875	\$914	\$823
732-75-F-24D	Fail safe	\$955	\$914	\$914	\$875	\$914	\$823
732-75-12D-LBMLCM		\$1123	\$1081	\$1081	\$1042	\$1081	\$993
732-75-24D-LBMLCM		\$1123	\$1081	\$1081	\$1042	\$1081	\$993
732-75-F-12D-LBMLCM	Fail safe	\$1123	\$1081	\$1081	\$1042	\$1081	\$993
732-75-F-24D-LBMLCM	Fail safe	\$1123	\$1081	\$1081	\$1042	\$1081	\$993



700 & 742 Series | LBMLCM: When using LBMLCM with a SARGENT 78/8200 Series or BEST 40 Series Mortise Lock, a 1/2" or 5/8" keeper latchbolt detection will be dependent on the door gap in order to ensure functionality. Consult customer support regarding use with other manufacturers.

712-75, 732-75 and 742-75: The LBMLCM option is compatible with SARGENT 78/8200 Series or BEST 40 Series 3/4" throw mortise lock latchbolts in hollow metal and wood frame applications. Monitoring capabilities are dependent on a maximum 1/8" door gap in order to ensure functionality. Consult customer support regarding use with other manufacturers.

Faceplates

MODEL	605	606	612	613	629	630
FP-712	\$300	\$265	\$265	\$219	\$265	\$171
FP-712-75	\$333	\$293	\$293	\$254	\$293	\$201

How to Order

PREFIX	SERIES	FINISH
FP	- 732-75	- 613
FACEPLATE ONLY		
FP Faceplate	712 1/2" PK keeper standard; Hollow metal frames, for up to a 5/8" throw latchbolt	605 Bright Brass 606 Satin Brass
	712-75 3/4" PK keeper standard; Hollow metal frames, for up to a 3/4" throw latchbolt without deadbolt	612 Satin Bronze 613 Bronze Toned
	732 PK keeper standard; Wood frames, for up to a 5/8" throw latchbolt	629 Bright Stainless Steel
	732-75 3/4" PK keeper standard; Wood frames, for up to a 3/4" throw latchbolt without deadbolt	630 Satin Stainless Steel

How to Order *Specify quantity and the following information. Order related products separately.*

SOLENOID ORIENTATION	KEEPER STYLE	FAIL SAFE/SECURE	VOLTAGE	FINISH	OPTION(S)
712		- F	- 24D	- 630	- LBMLCM
712 Vertical for hollow metal frames	(blank) 1/2" PK Keeper for up to 5/8" latchbolt	(blank) Fail Secure (Standard)	12D 12 Volt 24D 24 Volt	605 Bright Brass 606 Satin Brass	LBMLCM Latchbolt & locking cam monitor
732 Horizontal for wood and concrete frames	-75 3/4 PK keeper for up to a 3/4" throw latchbolt without deadbolt	F Fail Safe		612 Satin Bronze 613 Bronze Toned 629 Bright Stainless Steel 630 Satin Stainless Steel	

Folger Adam SB:710 Electric Strike Bodies

MODEL	DESCRIPTION	630
SB:710-12D		\$622
SB:710-24D		\$622
SB:710-F-12D	Fail safe	\$622
SB:710-F-24D	Fail safe	\$622
SB:710-12D-LBMLCM		\$789
SB:710-24D-LBMLCM		\$789
SB:710-F-12D-LBMLCM	Fail safe	\$789
SB:710-F-24D-LBMLCM	Fail safe	\$789

Folger Adam SB:710-75 Electric Strike Bodies

MODEL	DESCRIPTION	630
SB:710-75-12D		\$622
SB:710-75-24D		\$622
SB:710-75-F-12D	Fail safe	\$622
SB:710-75-F-24D	Fail safe	\$622
SB:710-75-12D-LBMLCM		\$789
SB:710-75-24D-LBMLCM		\$789
SB:710-75-F-12D-LBMLCM	Fail safe	\$789
SB:710-75-F-24D-LBMLCM	Fail safe	\$789

Folger Adam SB:730 Electric Strike Bodies

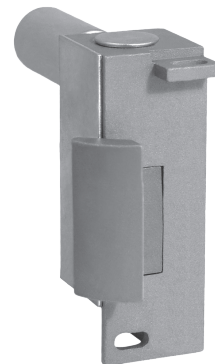
MODEL	DESCRIPTION	630
SB:730-12D		\$622
SB:730-24D		\$622
SB:730-F-12D	Fail safe	\$622
SB:730-F-24D	Fail safe	\$622
SB:730-12D-LBMLCM		\$789
SB:730-24D-LBMLCM		\$789
SB:730-F-12D-LBMLCM	Fail safe	\$789
SB:730-F-24D-LBMLCM	Fail safe	\$789

Folger Adam SB:730-75 Electric Strike Bodies

MODEL	DESCRIPTION	630
SB:730-75-12D		\$622
SB:730-75-24D		\$622
SB:730-75-F-12D	Fail safe	\$622
SB:730-75-F-24D	Fail safe	\$622
SB:730-75-12D-LBMLCM		\$789
SB:730-75-24D-LBMLCM		\$789
SB:730-75-F-12D-LBMLCM	Fail safe	\$789
SB:730-75-F-24D-LBMLCM	Fail safe	\$789

How to Order *Specify quantity and the following information. Order related products separately.*

PREFIX	SOLENOID ORIENTATION	KEEPER STYLE	FAIL SAFE/SECURE	VOLTAGE	OPTION(S)
SB	710		- F	- 24D	- LBMLCM
SB Strike Body Only	710 Vertical for hollow metal frames 730 Horizontal for wood and concrete frames	(blank) 1/2" PK Keeper for up to 5/8" latchbolt -75 3/4" PK keeper for up to a 3/4" throw latchbolt without deadbolt	(blank) Fail Secure (Standard) F Fail Safe	12D 12 Volt 24D 24 Volt	LBMLCM Latchbolt & locking cam monitor

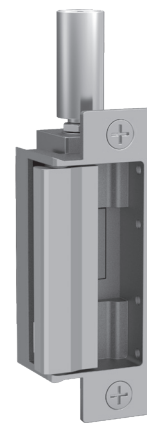


INSTALLATION NOTE: Double-door models are available with four different center-to-center dimensions between latchbolt keepers. Keepers are wide enough to compensate for vertical rod exit bolts, which may be as much as 3/8" (10 mm) off center-to-center dimension, either way. When using an electric strike in conjunction with a vertical rod exit device, it is necessary that:

1. The bottom rod of the exit device be removed or made inoperative.
2. The latchbolt of the exit device be the "Pullman" or beveled type.
3. The latchbolt be free-latching and remain projected while the door is open. Mechanisms that hold the latchbolt retracted while the door is open, and automatically release it when the door is closed, must be removed or made inoperative.

Folger Adam 742-75 Complete Pacs for Latchbolt Locks

MODEL	DESCRIPTION	605	606	612	613	629	630
742-75-12D		\$987	\$948	\$948	\$902	\$948	\$856
742-75-24D		\$987	\$948	\$948	\$902	\$948	\$856
742-75-F-12D	Fail safe	\$987	\$948	\$948	\$902	\$948	\$856
742-75-F-24D	Fail safe	\$987	\$948	\$948	\$902	\$948	\$856
742-75-12D-LBMLCM		\$1154	\$1115	\$1115	\$1069	\$1115	\$1022
742-75-24D-LBMLCM		\$1154	\$1115	\$1115	\$1069	\$1115	\$1022
742-75-F-12D-LBMLCM	Fail safe	\$1154	\$1115	\$1115	\$1069	\$1115	\$1022
742-75-F-24D-LBMLCM	Fail safe	\$1154	\$1115	\$1115	\$1069	\$1115	\$1022



How to Order Complete Pacs

Specify quantity and the following information. Order related products separately.

SERIES	FAIL SAFE/SECURE	VOLTAGE	FINISH	OPTION(S)
742-75	- F	- 12D	- 613	- LBMLCM
SOLENOID ORIENTATION				
742-75	(blank) Fail Secure (Standard)	12D 12 Volt	605 Bright Brass	LBMLCM Latchbolt & locking cam monitor
	F Fail Safe	24D 24 Volt	606 Satin Brass	
			612 Satin Bronze	
			613 Bronze Toned	
			629 Bright Stainless Steel	
			630 Satin Stainless Steel	

Faceplates

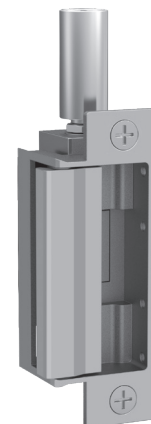
MODEL	605	606	612	613	629	630
FP-742	\$320	\$281	\$281	\$234	\$281	\$189

How to Order Faceplate Only

PREFIX	SERIES	FINISH
FP	- 742-75	- 630
FP Faceplate	742-75 Hollow metal frames, for up to a 3/4" throw latchbolt without deadbolt	605 Bright Brass 606 Satin Brass 612 Satin Bronze 613 Bronze Toned 629 Bright Stainless Steel 630 Satin Stainless Steel

Folger Adam SB740-75 Electric Strike Bodies

MODEL	DESCRIPTION	630
SB:740-75-12D		\$668
SB:740-75-24D		\$668
SB:740-75-F-12D	Fail safe	\$668
SB:740-75-F-24D	Fail safe	\$668
SB:740-75-12D-LBMLCM		\$835
SB:740-75-24D-LBMLCM		\$835
SB:740-75-F-12D-LBMLCM	Fail safe	\$835
SB:740-75-F-24D-LBMLCM	Fail safe	\$835



How to Order

Specify quantity and the following information. Order related products separately.

PREFIX	SERIES	FAIL SAFE/SECURE	VOLTAGE	OPTION(S)
SB	740-75	—	- 24D	—
STRIKE BODY ONLY				
SB Strike Body	740-75	(blank) Fail Secure (Standard)	12D 12 Volt	LBMLCM Latchbolt & locking cam monitor
		F Fail Safe	24D 24 Volt	

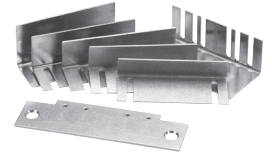
700 & 742 Series | LBMLCM: When using LBMLCM with a SARGENT 78/8200 Series or BEST 40 Series Mortise Lock, a 1/2" or 5/8" keeper latchbolt detection will be dependent on the door gap in order to ensure functionality. Consult customer support regarding use with other manufacturers.

712-75, 732-75 and 742-75: The LBMLCM option is compatible with SARGENT 78/8200 Series or BEST 40 Series 3/4" throw mortise lock latchbolts in hollow metal and wood frame applications. Monitoring capabilities are dependent on a maximum 1/8" door gap in order to ensure functionality. Consult customer support regarding use with other manufacturers.

Electric Strike Accessories

Electric Strike Accessories

ITEM	DESCRIPTION	PRICE
HESCUT-MTK	For installing the 1006, 1500, 1600, 4500, 5000, 5200, 7000, and 7501 electric strikes (4-7/8" ANSI jamb preparations only)	\$85
9000-MTK	Metal template installation kit	\$87
SMB	Surface mounting box	\$232
150	Stainless steel. Installed at the edge of the door to cover the lock and electric strike. Available in 626 finish only	\$99
152	Mount inside hollow metal and aluminum jambs	\$28
157	Torx screws	\$16
157D	Tamper-Resistant Torx R20 insert bit	\$45
310-2-3	Designed to prevent tampering with the latchbolt as well as the latchbolt keeper. Prevents one door from being open before the other	\$250
2001-1	Converts AC to unfiltered DC. Rated 35 V, 2 Amp. Not recommended for 1006 Electric Strike	\$42
2001M	Converts AC to unfiltered DC. Rated 35 V, 1 Amp. Includes MOV and self-resettable fuse. Not recommended for 1006 Electric Strike	\$74
2004M	Adapter between existing HES electric strikes and ElectroLynx® connectors	\$44
2005M3	For use with 1006, input voltage must be DC.	\$112
2006M	Audible operation indicator at 24VDC, 75db at 11-3/4"	\$56
2007M	With 4" wire leads	\$23



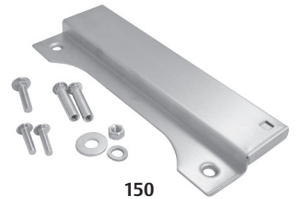
HESCUT-MTK



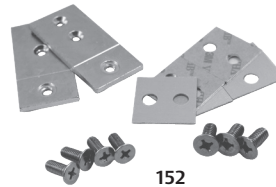
9000-MTK



SMB



150



152



157



157D



310-2-3



2001-1



2001M



2004M



2005M3



2006M



2007M

Cabinet Locks

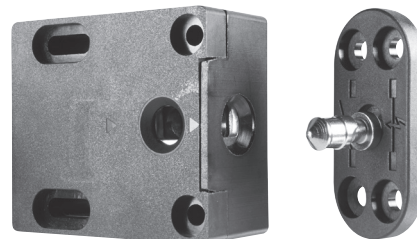
610 Multi-Purpose Electromechanical Lock

ITEM	DESCRIPTION	PRICE
610	Standard — No Monitoring	\$140
610LM	Locked State Monitoring	\$195

How to Order

Specify quantity and the following information. Order related products separately.

SERIES	OPTION(S)
610	– LM
610 Cabinet Lock	(blank) No Monitoring LM Locked State Monitoring



660 Multi-Purpose Electromechanical Lock

MODEL	DESCRIPTION	BLK
660		\$165
660-LBSM		\$205
660-LBSM-20PK		\$4100
660-Preload		\$245
660-LBSM-Preload		\$285

Accessories

ITEM	DESCRIPTION	PRICE
660-KO	660 Key override	\$90

How to Order

Specify quantity and the following information. Order related products separately.

SERIES	VOLTAGE	OPTION(S)
660	– 12V	– LBSM – Preload
660 Cabinet Lock	12V 12 Volt 24V 24 Volt	(blank) No preload, no monitoring Preload Up to 15 lbs LBSM Locked state monitoring LBSM-20PK Locked state monitoring 20 pack LBSM-Preload Locked state monitoring with Preload



KP20 Series Cabinet Lock

MODEL	DESCRIPTION	BLK
KP20	Stand-alone Keypad Cabinet Lock	\$130



K100 Aperio® Factory Paired Cabinet Lock with AH20 Wiegand Hub

ITEM	DESCRIPTION	PRICE
K100-622H-IPS-BP	K100-622 Aperio™ v3 Integrated Wireless Cabinet Lock Kit For 1/16" to 1/2" Thick Doors With Pinch Knob, HID multiCLASS SE Card Reader And AH20 Wiegand 1-to-1 Wireless Hub	\$1030
K100-622H-IPS-BP2	K100-622 Aperio™ v3 Integrated Wireless Cabinet Lock Kit For ≤ 1/2" to 1-1/2" Thick Doors With Pinch Knob, HID multiCLASS SE Card Reader And AH20 Wiegand 1-to-1 Wireless Hub	\$1040
K100-622H-IPS-BP3	K100-622 Aperio™ v3 Integrated Wireless Cabinet Lock Kit For ≤ 1-1/2" to 2-1/4" Thick Doors With Pinch Knob, HID multiCLASS SE Card Reader And AH20 Wiegand 1-to-1 Wireless Hub	\$1050
K100-622H-IPS-BL	K100-622 Aperio™ v3 Integrated Wireless Cabinet Lock Kit For 1/16" to 1/2" Thick Doors With Lever Knob, HID multiCLASS SE Card Reader And AH20 Wiegand 1-to-1 Wireless Hub	\$1030
K100-622H-IPS-BL2	K100-622 Aperio™ v3 Integrated Wireless Cabinet Lock Kit For ≤ 1/2" to 1-1/2" Thick Doors With Lever Knob, HID multiCLASS SE Card Reader And AH20 Wiegand 1-to-1 Wireless Hub	\$1040
K100-622H-IPS-BL3	K100-622 Aperio™ v3 Integrated Wireless Cabinet Lock Kit For ≤ 1-1/2" to 2-1/4" Thick Doors With Lever Knob, HID multiCLASS SE Card Reader And AH20 Wiegand 1-to-1 Wireless Hub	\$1050



K100 Demo Mounts

ITEM	DESCRIPTION	PRICE
DEMO-K100-622-IPS-BL	K100-622 Aperio™ Integrated Wireless Cabinet Lock Demo Mount With Lever Knob and HID multiCLASS SE Card Reader, NFC HID Mobile Access Enabled	\$1105
DEMO-K100-622-IPS-BP	K100-622 Aperio™ Integrated Wireless Cabinet Lock Demo Mount With Pinch Knob and HID multiCLASS SE Card Reader, NFC HID Mobile Access Enabled	\$1105

Accessories

ITEM	DESCRIPTION	PRICE
OBS-622	K Series Open Back Strike Plate for Drawers	\$30

How to Order Specify quantity and the following information. Order related products separately.

SERIES	MODEL	CREDENTIAL TECHNOLOGY	COLOR	KNOB TYPE	SHAFT LENGTH (DOOR THICKNESS)
K100	- 622H	- IPS	- B	P	2
	622H* Factory Paired* for Doors with AH20 1:1 Wiegand Hub	IPS HID Prox®, Kantech ioProx, HID iCLASS®, HID iCLASS SE® (SIOenabled), HID iCLASS® Seos™, HID MIFARE® SE, HID DESFire® EV1 SE, MIFARE Classic, MIFARE DESFire EV1, NFC-enabled mobile phones	B Black	P Pinch L Lever	2 ≥ 1/2" to 1-1/2" 3 ≥ 1-1/2" to 2-1/4"

*Kit includes integrated lock paired with Wiegand 1:1 wireless hub.

K100: The K100 Cabinet Lock is available as either a pre-paired lock and hub kit (no certification required) or as a field configurable component (requires Aperio® Certified Integrator certification). Pre-paired kits support limited features. Field configured devices are required in order to support all options. Visit www.IntelligentOpenings.com to learn more.

K200 Series Integrated Wired Access Control Cabinet Lock

ITEM	DESCRIPTION	PRICE
K200-622-IPS-BP	K200-622 Integrated Wired, Wiegand Cabinet Lock For Doors With HID multiCLASS SE Card Reader and Black Pinch Knob	\$705
K200-622-IPV040-BP	K200-622 Integrated Wired, Wiegand Cabinet Lock For Doors With HID SE PIV-I 40 Bit Card Reader and Black Pinch Knob	\$705
K200-622-IPV064-BP	K200-622 Integrated Wired, Wiegand Cabinet Lock For Doors With HID SE PIV-I 64 Bit Card Reader and Black Pinch Knob	\$705
K200-622-IPV075-BP	K200-622 Integrated Wired, Wiegand Cabinet Lock For Doors With HID SE PIV-I 75 Bit Card Reader and Black Pinch Knob	\$705
K200-622-IPV128-BP	K200-622 Integrated Wired, Wiegand Cabinet Lock For Doors With HID SE PIV-I 128 Bit Card Reader and Black Pinch Knob	\$705
K200-622-IPV200-BP	K200-622 Integrated Wired, Wiegand Cabinet Lock For Doors With HID SE PIV-I 200 Bit Card Reader and Black Pinch Knob	\$705



K200 Series Integrated Wired Access Control Cabinet Lock for Drawers

ITEM	DESCRIPTION	PRICE
K200-622D-IPS-BP	K200-622 Integrated Wired, Wiegand Cabinet Lock For Drawers With HID multiCLASS SE Card Reader and Black Pinch Knob	\$735
K200-622D-IPV040-BP	K200-622 Integrated Wired, Wiegand Cabinet Lock For Drawers With HID SE PIV-I 40 Bit Card Reader and Black Pinch Knob	\$735
K200-622D-IPV064-BP	K200-622 Integrated Wired, Wiegand Cabinet Lock For Drawers With HID SE PIV-I 64 Bit Card Reader and Black Pinch Knob	\$735
K200-622D-IPV075-BP	K200-622 Integrated Wired, Wiegand Cabinet Lock For Drawers With HID SE PIV-I 75 Bit Card Reader and Black Pinch Knob	\$735
K200-622D-IPV128-BP	K200-622 Integrated Wired, Wiegand Cabinet Lock For Drawers With HID SE PIV-I 128 Bit Card Reader and Black Pinch Knob	\$735
K200-622D-IPV200-BP	K200-622 Integrated Wired, Wiegand Cabinet Lock For Drawers With HID SE PIV-I 200 Bit Card Reader and Black Pinch Knob	\$735

KS-M Mechanical Server Cabinet Lock

ITEM	DESCRIPTION	PRICE
KS-M-B	KS-M Mechanical Server Cabinet Lock with No Cylinder	\$120
KS-M-B-K1	KS-M Mechanical Server Cabinet Lock with MEDECO X4 SFIC (DGV Commercial Keyway) with 2 Keys (1 Control, 1 User)	\$220



KS200 Series Integrated Wired, Wiegand Access Control Server Cabinet Lock

ITEM	DESCRIPTION	PRICE
KS200-S-IPS-B	KS200-S Integrated Wired, Wiegand Server Cabinet Lock With No Cylinder and HID multiCLASS SE Card Reader, HID NFC Mobile Access Enabled	\$650
KS200-S-IPS-B-BC	KS200-S Integrated Wired, Wiegand Server Cabinet Lock With Blank Plastic SFIC Core and HID multiCLASS SE Card Reader, HID NFC Mobile Access Enabled	\$665
KS200-S-IPS-B-K1	KS200-S Integrated Wired, Wiegand Server Cabinet Lock With MEDECO X4 SFIC (DGV Commercial Keyway) with 2 Keys (1 Control, 1 User) and HID multiCLASS SE Card Reader, HID NFC Mobile Access Enabled	\$750
KS200-S-IPV040-B	KS200-S Integrated Wired, Wiegand Server Cabinet Lock With No Cylinder and HID SE PIV-I 40 Bit Card Reader, HID NFC Mobile Access Enabled	\$650
KS200-S-IPV040-B-BC	KS200-S Integrated Wired, Wiegand Server Cabinet Lock With Blank Plastic SFIC Core and HID SE PIV-I 40 Bit Card Reader, HID NFC Mobile Access Enabled	\$665
KS200-S-IPV040-B-K1	KS200-S Integrated Wired, Wiegand Server Cabinet Lock With MEDECO X4 SFIC (DGV Commercial Keyway) with 2 Keys (1 Control, 1 User) and HID SE PIV-I 40 Bit Card Reader, HID NFC Mobile Access Enabled	\$750
KS200-S-IPV064-B	KS200-S Integrated Wired, Wiegand Server Cabinet Lock With No Cylinder and HID SE PIV-I 64 Bit Card Reader, HID NFC Mobile Access Enabled	\$650
KS200-S-IPV064-B-BC	KS200-S Integrated Wired, Wiegand Server Cabinet Lock With Blank Plastic SFIC Core and HID SE PIV-I 64 Bit Card Reader, HID NFC Mobile Access Enabled	\$665
KS200-S-IPV064-B-K1	KS200-S Integrated Wired, Wiegand Server Cabinet Lock With MEDECO X4 SFIC (DGV Commercial Keyway) with 2 Keys (1 Control, 1 User) and HID SE PIV-I 64 Bit Card Reader, HID NFC Mobile Access Enabled	\$750
KS200-S-IPV075-B	KS200-S Integrated Wired, Wiegand Server Cabinet Lock With No Cylinder and HID SE PIV-I 75 Bit Card Reader, HID NFC Mobile Access Enabled	\$650
KS200-S-IPV075-B-BC	KS200-S Integrated Wired, Wiegand Server Cabinet Lock With Blank Plastic SFIC Core and HID SE PIV-I 75 Bit Card Reader, HID NFC Mobile Access Enabled	\$665
KS200-S-IPV075-B-K1	KS200-S Integrated Wired, Wiegand Server Cabinet Lock With MEDECO X4 SFIC (DGV Commercial Keyway) with 2 Keys (1 Control, 1 User) and HID SE PIV-I 75 Bit Card Reader, HID NFC Mobile Access Enabled	\$750
KS200-S-IPV128-B	KS200-S Integrated Wired, Wiegand Server Cabinet Lock With No Cylinder and HID SE PIV-I 128 Bit Card Reader, HID NFC Mobile Access Enabled	\$650
KS200-S-IPV128-B-BC	KS200-S Integrated Wired, Wiegand Server Cabinet Lock With Blank Plastic SFIC Core and HID SE PIV-I 128 Bit Card Reader, HID NFC Mobile Access Enabled	\$665
KS200-S-IPV128-B-K1	KS200-S Integrated Wired, Wiegand Server Cabinet Lock With MEDECO X4 SFIC (DGV Commercial Keyway) with 2 Keys (1 Control, 1 User) and HID SE PIV-I 128 Bit Card Reader, HID NFC Mobile Access Enabled	\$750
KS200-S-IPV200-B	KS200-S Integrated Wired, Wiegand Server Cabinet Lock With No Cylinder and HID SE PIV-I 200 Bit Card Reader, HID NFC Mobile Access Enabled	\$650
KS200-S-IPV200-B-BC	KS200-S Integrated Wired, Wiegand Server Cabinet Lock With Blank Plastic SFIC Core and HID SE PIV-I 200 Bit Card Reader, HID NFC Mobile Access Enabled	\$665
KS200-S-IPV200-B-K1	KS200-S Integrated Wired, Wiegand Server Cabinet Lock With MEDECO X4 SFIC (DGV Commercial Keyway) with 2 Keys (1 Control, 1 User) and HID SE PIV-I 200 Bit Card Reader, HID NFC Mobile Access Enabled	\$750



KS210 Series Integrated Wired, RS-485 OSDP Access Control Server Cabinet Lock

ITEM	DESCRIPTION	PRICE
KS210-S-IPS-B	KS210-S Integrated Wired, OSDP Server Cabinet Lock With No Cylinder and HID multiCLASS SE Card Reader, HID BLE & NFC Mobile Access Enabled	\$750
KS210-S-IPS-B-BC	KS210-S Integrated Wired, OSDP Server Cabinet Lock With Blank Plastic SFIC Core and HID multiCLASS SE Card Reader, HID BLE & NFC Mobile Access Enabled	\$765
KS210-S-IPS-B-K1	KS210-S Integrated Wired, OSDP Server Cabinet Lock With MEDECO X4 SFIC (DGV Commercial Keyway) with 2 Keys (1 Control, 1 User) and HID multiCLASS SE Card Reader, HID BLE & NFC Mobile Access Enabled	\$850
KS210-S-IPV040-B	KS210-S Integrated Wired, OSDP Server Cabinet Lock With No Cylinder and HID SE PIV-I 40 Bit Card Reader, HID BLE & NFC Mobile Access Enabled	\$750
KS210-S-IPV040-B-BC	KS210-S Integrated Wired, OSDP Server Cabinet Lock With Blank Plastic SFIC Core and HID SE PIV-I 40 Bit Card Reader, HID BLE & NFC Mobile Access Enabled	\$765
KS210-S-IPV040-B-K1	KS210-S Integrated Wired, OSDP Server Cabinet Lock With MEDECO X4 SFIC (DGV Commercial Keyway) with 2 Keys (1 Control, 1 User) and HID SE PIV-I 40 Bit Card Reader, HID BLE & NFC Mobile Access Enabled	\$850
KS210-S-IPV064-B	KS210-S Integrated Wired, OSDP Server Cabinet Lock With No Cylinder and HID SE PIV-I 64 Bit Card Reader, HID BLE & NFC Mobile Access Enabled	\$750
KS210-S-IPV064-B-BC	KS210-S Integrated Wired, OSDP Server Cabinet Lock With Blank Plastic SFIC Core and HID SE PIV-I 64 Bit Card Reader, HID BLE & NFC Mobile Access Enabled	\$765
KS210-S-IPV064-B-K1	KS210-S Integrated Wired, OSDP Server Cabinet Lock With MEDECO X4 SFIC (DGV Commercial Keyway) with 2 Keys (1 Control, 1 User) and HID SE PIV-I 64 Bit Card Reader, HID BLE & NFC Mobile Access Enabled	\$850
KS210-S-IPV075-B	KS210-S Integrated Wired, OSDP Server Cabinet Lock With No Cylinder and HID SE PIV-I 75 Bit Card Reader, HID BLE & NFC Mobile Access Enabled	\$750
KS210-S-IPV075-B-BC	KS210-S Integrated Wired, OSDP Server Cabinet Lock With Blank Plastic SFIC Core and HID SE PIV-I 75 Bit Card Reader, HID BLE & NFC Mobile Access Enabled	\$765
KS210-S-IPV075-B-K1	KS210-S Integrated Wired, OSDP Server Cabinet Lock With MEDECO X4 SFIC (DGV Commercial Keyway) with 2 Keys (1 Control, 1 User) and HID SE PIV-I 75 Bit Card Reader, HID BLE & NFC Mobile Access Enabled	\$850
KS210-S-IPV128-B	KS210-S Integrated Wired, OSDP Server Cabinet Lock With No Cylinder and HID SE PIV-I 128 Bit Card Reader, HID BLE & NFC Mobile Access Enabled	\$750
KS210-S-IPV128-B-BC	KS210-S Integrated Wired, OSDP Server Cabinet Lock With Blank Plastic SFIC Core and HID SE PIV-I 128 Bit Card Reader, HID BLE & NFC Mobile Access Enabled	\$765
KS210-S-IPV128-B-K1	KS210-S Integrated Wired, OSDP Server Cabinet Lock With MEDECO X4 SFIC (DGV Commercial Keyway) with 2 Keys (1 Control, 1 User) and HID SE PIV-I 128 Bit Card Reader, HID BLE & NFC Mobile Access Enabled	\$850
KS210-S-IPV200-B	KS210-S Integrated Wired, OSDP Server Cabinet Lock With No Cylinder and HID SE PIV-I 200 Bit Card Reader, HID BLE & NFC Mobile Access Enabled	\$750
KS210-S-IPV200-B-BC	KS210-S Integrated Wired, OSDP Server Cabinet Lock With Blank Plastic SFIC Core and HID SE PIV-I 200 Bit Card Reader, HID BLE & NFC Mobile Access Enabled	\$765
KS210-S-IPV200-B-K1	KS210-S Integrated Wired, OSDP Server Cabinet Lock With MEDECO X4 SFIC (DGV Commercial Keyway) with 2 Keys (1 Control, 1 User) and HID SE PIV-I 200 Bit Card Reader, HID BLE & NFC Mobile Access Enabled	\$850



Accessories

K200, KS-M, KS200 & KS210 Accessories

ITEM	DESCRIPTION	PRICE
OBS-622	K Series Open Back Strike Plate for Drawers	\$30
CBL6-QC12	Lock Side Interface Cable: 6 Foot, 12 Conductor and Molex both ends	\$70
CBL12-QC12	System Side Interface Cable: 12 Foot, 12 Conductor and Molex one end, pinned one end	\$90
SFIC	KS Series MEDECO X4 SFIC Small Format Interchangeable Core (DGV Commercial Keyway) with 2 Keys (1 Control, 1 User)	\$100
SFIC-BC	KS Series SFIC Small Format Interchangeable Core Blank, Black Plastic Core	\$15
KS-DPS	KS Series Surface Mount DPS (external)	\$30
KS-CAM45	KS Series Locking Cam: 45MM—5	\$8
KS-CAM38	KS Series Locking Cam: 38MM—1	\$8
WT-1	Wiegand Test Box with LED Indicators	\$673
WT-2	Wiegand Test Box with LCD Backlit Display with LED Indicators	\$776

Warranties & Terms & Conditions

HES Warranties

We believe that the best products in the industry should be supported by our commitment to deliver the highest quality products and services. HES is proud to extend the most comprehensive no-fault, no-questions asked warranty coverage to all of our products and solutions. This is our expectation and commitment to you – our valued customer.



**SecuriCare
Warranty**

SecuriCare 10-year Warranty

- Duration:** Ten years from date of shipment.
Condition: Any reason including, but not limited to, installation error, vandalism or force majeure.
Replacement: Replacement product or equivalent shipped at h.e.s. expense via next day air freight in most cases.
Products Covered:
- When installed with a Smart PAC III, the following electric strikes are upgraded to the 10-year warranty:
 - » 1006, 1500, 1600, 4500, 5000, 5200, 7500, 8000, 8300, 8500, 9400, 9500, 9600, 9700, 9800
 - » Folger Adam 310, 712, 732, 742



**SecuriCare
Warranty**

SecuriCare 5-year Warranty

- Duration:** Five years from date of shipment.
Condition: Any reason including, but not limited to, installation error, vandalism or force majeure.
Replacement: Replacement product or equivalent shipped at h.e.s.'s expense via next day air freight in most cases.
Products Covered:
- Electric Strikes:
 - » 1006, 1500, 1600, 4500, 5000, 5200, 7500, 8000, 8300, 8500, 9400, 9500, 9600, 9700, 9800
 - » Folger Adam 310, 712, 732, 742
 - » MUNL, UNL



**SecuriCare
Warranty**

SecuriCare 3-year Warranty

- Duration:** Three years from date of shipment.
Condition: Any reason, including but not limited to, installation error, vandalism or force majeure.
Replacement: Replacement product or equivalent shipped at h.e.s.'s expense via next day air freight in most cases.
Products Covered:
- ES100 Aperio® Wireless Electric Strike
 - Cabinet Locks: K, KS and 600 Series & Accessories

Check your individual product to determine warranty coverage. Batteries and consumables are not covered by HES Warranty programs. Replacement products, at HES's sole option, may be the identical item or a unit which serves as a functional replacement. If the customer has an account with HES or a valid credit card, the customer may order an advance replacement product, whereby HES will charge the customer's account for the price of the product plus next day air freight, and will credit back to the customer the full amount of the charge, including outbound freight, upon HES receipt of the original product from the customer. HES's sole and exclusive liability, and customer's sole remedy, is limited to the replacement of the HES product when delivered to HES's facility (freight and insurance charges prepaid by customer).

HES Terms & Conditions

PRICES: All prices are subject to change without notice. Prices listed on the HES website will serve as the most current list price. All shipments will be made at prices in effect at the time of shipment. The customer shall be responsible for payment of all applicable sales and/or use taxes and freight costs.

MINIMUM ORDER: Minimum product charge per invoice is \$150.00 USD.

PAYMENT TERMS: Net thirty (30) days from date of invoice. Interest at the rate of up to 1-1/2% per month may be charged on all past due accounts. An order received on an account which has not been paid within 45 days of the date of invoice may not be processed until the account is current. Custom orders may require a deposit.

DELIVERY TERMS: All prices are Ex-works factory. Purchaser assumes the risk of loss or damage to the goods while in transit from the point of shipment. HES reserves the right to make delivery in installments. Installments shall be separately invoiced and paid for when due. Delay in delivery of an installment shall not relieve the purchaser of its obligation to accept remaining deliveries.

FREIGHT POLICY: All Purchase Orders received with a minimum net value of \$3,500 will qualify automatically for free standard freight within the continental United States. This minimum amount applies per Purchase Order to qualify and does not include free expedited freight. Qualified orders may ship partial or ship complete at your preference. Qualified orders that ship partial will not incur freight charges. All shipments that do not qualify for free freight will be charged for freight based upon our terms in effect at the time of shipment. Customers may provide their own carrier account number for expedited freight methods or for any Purchase Order to be used to cover freight costs. Minimum amounts are subject to change without notice.

SHORTAGE: Any claim for shortages must be made to HES in writing within one (1) week of receipt of merchandise.

WARRANTY RETURNS: A Customer Care Form (CCF) for defective product must be obtained from HES before any merchandise can be returned. CCF's are valid for sixty (60) days from date of issuance. Goods returned under the terms of MagnaCare® and SecuriCare® Warranties may require a copy of the original invoice.

RETURNS: A Customer Care Form (CCF) must be obtained from HES before any merchandise can be returned. CCF's are valid for sixty (60) days from date of issuance. Items that are not factory sealed, or that are returned later than 90 days from the date of receipt are subject to a restocking charge plus an additional charge for any damage.

CANCELLATIONS: Any order may be subject to a 5% cancellation charge for catalog items. Cancellation of non-catalog or custom items will be subject to a 20% cancellation charge plus all costs (both direct and indirect) incurred by manufacturing at the point of cancellation that are properly allocated to the cancelled item(s).

LIMITATION OF LIABILITY: Neither party will be liable to the other for any delay or failure in performance arising directly out of war, sabotage, insurrection, riot, and any other act of civil disobedience, act of public enemy, fire, explosion, flood, storm, or other act of God or nature, or similar cause beyond its reasonable control, including shortage or unavailability of labor or materials. If, notwithstanding the foregoing limitations, HES has any liability to the purchaser, the purchaser agrees that the total liability to the purchaser for all losses, damages, and causes of action, whether in contract, equity, tort (including without limitation, negligence and gross negligence), or otherwise, will not exceed the amount the purchaser paid to HES for the products (including, without limitation, incidental or consequential damages, damages for lost profits or business interruption, and punitive damages).

NO THIRD PARTY LIABILITY: If the purchaser uses the HES Products on behalf of others or provides to others any products referenced herein, the HES Parties shall have no liability to such persons whatsoever, and the purchaser agree to defend and indemnify the HES Parties from any and all claims and demands asserted against them, and from any legal fees, costs and other expenses that the HES Parties incur therewith.

Customers purchasing from Door Security Solutions Canada can find Canadian terms and conditions at www.assaabloy.ca/terms



The ASSA ABLOY Group is the global leader in access solutions. Every day we help people feel safe, secure and experience a more open world.



ASSA ABLOY

USA

800 626 7590 | f. 866 582 4641 | [hesinnovations.com](https://www.hesinnovations.com)
customerservice.hes@assaabloy.com
techsupport.hes@assaabloy.com
orders.hes@assaabloy.com

CANADA

800 461 3007 | f. 800 461 8989 | [assaabloydss.ca](https://www.assaabloydss.ca)
sales.dss.ca@assaabloy.com
orders.dss.ca@assaabloy.com

Printed in the U.S. A.

Patent pending and/or patent www.assaabloydss.com/patents

Copyright © 2022, Hanchett Entry Systems, Inc., an ASSA ABLOY Group company. All rights reserved. Reproduction in whole or in part without the express written permission of Hanchett Entry Systems, Inc. is prohibited. HES-095-0522