

SECURITRON[®]

ASSA ABLOY

Product Pricelist

U.S. & Canada Effective Date: June 1, 2022



Experience a safer
and more open world

SECURITRON®

ASSA ABLOY

Product Pricelist

U.S. & Canada Effective date June 1, 2022



Securitron Products

Electromagnetic Locks		Push Buttons & Egress Devices	
Intelligent Magnalocks®		XMS Exit Motion Sensor	15
M380E EcoMag	3	Emergency Exit Buttons	
M680E EcoMag	3	EEB	15
Delayed Egress Magnalocks		Push Buttons	
DEM680E EcoMag	3	PB	15
iMXDa	4	PB2	16
Durable Magnalocks		PB3	16
M32	4	PB4L	17
M62	5	PB5	17
M82	5	MK Mortise Key Switch	18
M32, M62, M82 Brackets	6	KP-1 Tubular Key Switch	18
M32, M62, M82 Lock Housing	6	WSS Wave Sense Switch	19
M32, M62, M82 Dress Covers	7	SP-1 Capacitive Button	19
M32, M62, M82 Accessories	7	Egress Bars	
M38	8	DSB	20
M68	8	TSB	20
Universal Magnalock Accessories	8	EMB	21
DM62	10	Egress Handles	
Recessed Magnalocks		TSH	21
M34R	10	EMH	21
Shear Aligning Magnalocks		Power	
SAM, SAM2	10	AQ Series Power Supplies	22
Cabinet Locks		AQL Series Power Supplies	24
MCL	11	BPS Linear Power Supplies	25
M32-SS	11	EcoPower®	25
Specialty Locks		BPSS Solar Power Supplies	26
GL1	11	AQE Single-Port PoE	26
MM15	12	PSP Plug-In Power Supplies	26
Keypads & Card Readers		Other Power Products	27
Stand Alone Keypads		Power Transfers	
DK-12	13	CEPT Concealed Electrical Power Transfers	28
Keypad Systems		SEPT Square-Cut Electrical Power Transfers	28
DK-16	13	EPT Electrical Power Transfers	29
DK-26	13	EH Electric Hinges	29
Wiegand Keypads		TSB-C Door Cords	29
DK-37	13	Accessories	
DK-38	14	TM-2, TM-9, DT-7 & PZ1 Timers & Alarms	30
Aperio Card Reader		BA-DPA Door Prop Alarm Monitoring	30
R100H	14	DPS Door Position Switches	30
		MSS Magnetic Switch/High Security	31
		LM Latch Monitoring	31
		RLP, RB-4 Relay Logic Packs & Boards	31
		Terms & Conditions Warranty	
		Terms & Conditions, Warranties	32



Electromagnetic Locks

M380E EcoMag® 600 lbs Intelligent Magnalocks®

MODEL	DESCRIPTION	600	605	606	612	613E	628	629	630	BSP
M380EBD	BondSTAT, DPS	\$810	\$910	\$910	\$910	\$810	\$710	\$910	\$910	\$810
M380EBDX	BondSTAT, DPS, REX	\$985	\$1085	\$1085	\$1085	\$985	\$885	\$1085	\$1085	\$985



How to Order *Specify quantity and the following information. Order related products separately.*

MODEL SERIES	ACCESSORY OPTIONS	FINISH OPTIONS*
M380EBD	X	- 606
M380EBD 600 lbs with BondSTAT Monitor & Door Position Switch	(blank) No Accessory Options X PIR Request to Exit	600 Paintable Primer Gray Finish 613E Dark Oxidized Satin Bronze 628/US28 Satin Aluminum Clear 629 Bright Stainless Steel 605/US3 Bright Brass 630 Satin Stainless Steel 606/US4 Satin Brass BSP Black Suede Powder 612/US10 Satin Bronze

M680E EcoMag® 1,200 lbs Intelligent Magnalocks®

MODEL	DESCRIPTION	600	605	606	612	613E	628	629	630	BSP
M680E							\$760			
M680EBD	BondSTAT, DPS	\$910	\$1010	\$1010	\$1010	\$910	\$810	\$1010	\$1010	\$910
M680EBDX	BondSTAT, DPS, REX	\$1085	\$1185	\$1185	\$1185	\$1085	\$985	\$1185	\$1185	\$1085



How to Order *Specify quantity and the following information. Order related products separately.*

MODEL SERIES	MONITORING OPTIONS	ACCESSORY OPTIONS	FINISH OPTIONS*
M680E	BD	X	- 606
M680E (1,200 lbs)	(blank) No Monitoring BD BondSTAT Monitor & Door Position Switch	(blank) No Accessory Options X PIR Request to Exit	600 Paintable Primer Gray Finish 613E Dark Oxidized Satin Bronze 628/US28 Satin Aluminum Clear 629 Bright Stainless Steel 605/US3 Bright Brass 630 Satin Stainless Steel 606/US4 Satin Brass BSP Black Suede Powder 612/US10 Satin Bronze

DEM680E Delayed Egress Magnalocks®

MODEL	DESCRIPTION	600	605	606	612	613E	628	629	630	BSP
DEM680E	Standard Model (Supports HUGS)	\$1485	\$1585	\$1585	\$1585	\$1485	\$1385	\$1585	\$1585	\$1485
DEM680E-CA15S	California 15 Second Compliant	\$1485	\$1585	\$1585	\$1585	\$1485	\$1385	\$1585	\$1585	\$1485
DEM680E-CA30S	California 30 Second Compliant	\$1485	\$1585	\$1585	\$1585	\$1485	\$1385	\$1585	\$1585	\$1485
DEM680E-CH	Chicago Compliant	\$1485	\$1585	\$1585	\$1585	\$1485	\$1385	\$1585	\$1585	\$1485



How to Order

MODEL SERIES	TIMING OPTIONS	FINISH OPTIONS
DEM680E		- 606
Delayed Egress M680 EcoMag	(blank) Standard Model (Supports HUGS) -CA15S California 15 Second Compliant -CA30S California 30 Second Compliant -CH Chicago Compliant	628 Satin Aluminum Clear 605 Bright Brass 606 Satin Brass 612 Satin Bronze 613E Dark Oxidized Satin Bronze 629 Bright Stainless Steel 630 Satin Stainless Steel BSP Black Suede Powder

iMXDa Delayed Egress

ITEM	DESCRIPTION	PRICE
iMXDa	Adjustable Timing	\$1485
iMXDa-CA15S	California Required 15 sec Timings	\$1485
iMXDa-CA30S	California Required 30 sec Timings	\$1485
iMXDaCH	Chicago Required Timings	\$1485
iMXDaH	Standard Model (supports HUGS)	\$1485
iEXDa	External Initiation	\$1335

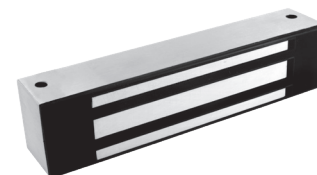


Delayed Egress Magnalock Accessories

ITEM	DESCRIPTION	PRICE
BA-XDT-12	12 VDC Boxed Alarm & Door Label Exit Delay Timer	\$298
BA-XDT-24	24 VDC Boxed Alarm & Door Label Exit Delay Timer	\$298
EXD-1L	Label & Documentation Exit Delay System	\$26
FA-XDT-12	12 VDC, Flush Mount with Alarm & Door Exit Delay Timer	\$298
FA-XDT-24	24 VDC, Flush Mount with Alarm & Door Exit Delay Timer	\$298
XDT-12	12 VDC Exit Delay Timer	\$197
XDT-24	24 VDC Exit Delay Timer	\$186
SB-MXD	Sex Bolt Kit — Door Movement	\$225

M32 600 lbs Durable Magnalocks®

ITEM	DESCRIPTION	PRICE
M32BD	BondSTAT Monitor & Door Position Switch	\$612
M32D	Door Position Switch	\$504
M32	No Monitoring	\$426
M32B	BondSTAT Monitor	\$545
M32F	Face Drilled, No Monitoring	\$426
M32FB	Face Drilled, BondSTAT Monitor	\$545
M32FBD	Face Drilled, BondSTAT Monitor & Door Position Switch	\$612
M32FD	Face Drilled, Door Position Switch	\$504

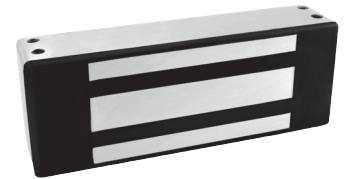


How to Order *Specify quantity and the following information. Order related products separately.*

MODEL SERIES	MOUNTING METHOD	MONITORING OPTIONS	STRIKE PLATE OPTIONS
M32		BD	-SS
M32 (600 lbs)	(blank) Direct Mount	(blank) No Monitoring	(blank) Standard Strike
	F Face Drilled	B BondSTAT Monitor	SS Split Strike (Add \$138)*
		D Door Position Switch	SASM Shock Absorbing Strike Mount (Add \$86)
		BD BondSTAT Monitor & Door Position Switch	

*D and BD monitoring options not available with (SS) Split Strike option.

M62 1,200 lbs Durable Magnalocks®



ITEM	DESCRIPTION	PRICE
M62	No Monitoring	\$545
M62B	BondSTAT Monitor	\$664
M62BD	BondSTAT Monitor & Door Position Switch	\$730
M62D	Door Position Switch	\$624
M62F	Face Drilled	\$545
M62FB	Face Drilled, BondSTAT Monitor	\$664
M62FBD	Face Drilled, BondSTAT Monitor & Door Position Switch	\$730
M62FD	Face Drilled, Door Position Switch	\$624
M62G	Gate Conduit	\$576
M62GB	Gate Conduit, BondSTAT Monitor	\$694
M62GBD	Gate Conduit, BondSTAT Monitor & Door Position Switch	\$763
M62GD	Gate Conduit, Door Position Switch	\$655
M62FG	Face Drilled, Gate Conduit	\$575
M62FGB	Face Drilled, Gate Conduit, BondSTAT Monitoring	\$692
M62FGBD	Face Drilled, Gate Conduit, BondSTAT Monitoring & Door Position Switch	\$761
M62FGD	Face Drilled, Gate Conduit, Door Position Switch	\$657

How to Order Specify quantity and the following information. Order related products separately.

MODEL SERIES	MOUNTING METHOD	MONITORING OPTIONS	STRIKE PLATE OPTIONS
M62	FG	BD	-SS
M62 (1200 lbs)	(blank) Direct Mount F Face Drilled G Gate Conduit	(blank) No Monitoring B BondSTAT Monitor D Door Position Switch BD BondSTAT Monitor & Door Position Switch	(blank) Standard Strike OS Offset Strike SS Split Strike (Add \$114)* SASM Shock Absorbing Strike Mount (Add \$86)

*D and BD monitoring options not available with (SS) Split Strike option.

M82 1,800 lbs Durable Magnalocks®



ITEM	DESCRIPTION	PRICE
M82B	BondSTAT Monitor	\$764
M82BD	BondSTAT Monitor & Door Position Switch	\$833
M82FB	Face Drilled, BondSTAT Monitor	\$764
M82FBD	Face Drilled, BondSTAT Monitor & Door Position Switch	\$833
M82GB	Gate Conduit, BondSTAT Monitor	\$796
M82GBD	Gate Conduit, BondSTAT Monitor & Door Position Switch	\$862
M82FGB	Face Drilled, Gate Conduit, BondSTAT Monitor	\$797
M82FGBD	Face Drilled, Gate Conduit, BondSTAT Monitor & Door Position Switch	\$864

How to Order Specify quantity and the following information. Order related products separately.

MODEL SERIES	MOUNTING METHOD	MONITORING OPTIONS	STRIKE PLATE OPTIONS
M82	FG	BD	-SS
M82 (1800 lbs)	(blank) Direct Mount F Face Drilled G Gate Conduit	B BondSTAT Monitor BD BondSTAT Monitor & Door Position Switch	(blank) Standard Strike OS Offset Strike SS Split Strike (Add \$139)* SASM Shock Absorbing Strike Mount (Add \$86)

*D and BD monitoring options not available with (SS) Split Strike option.

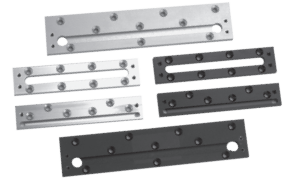
Aluminum Frame Spacer Bracket

MODEL	DESCRIPTION	BK	CL
ASB-32	For M32	\$73	\$54
ASB-62	For M62	\$73	\$54
ASB-82	For M82	\$102	\$88



Concrete/Wood Bracket

MODEL	DESCRIPTION	BK	CL
CWB-32	For M32	\$82	\$69
CWB-62	For M62	\$73	\$78
CWB-82	For M82	\$111	\$97



Adjustable Z-Bracket

MODEL	DESCRIPTION	BK	CL	SS
ZA-32/62	For M32 and M62	\$206	\$192	\$217
ZA-82	For M82	\$249	\$231	\$260



How to Order Specify quantity and the following information. Order related products separately.

BRACKET TYPE	MODEL SERIES	STRIKE PLATE OPTIONS
ASB	-32	BK
ASB Aluminum Frame Spacer Bracket	32	BK Black Anodized
CWB Concrete/Wood Bracket	62	CL Clear Anodized
ZA Adjustable Z-Bracket	82	SS Satin Stainless

Lock Housing

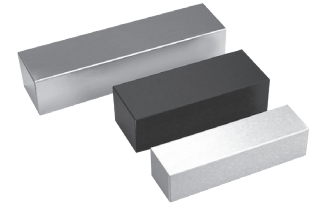
MODEL	DESCRIPTION	630
HHD	Double Horizontal	\$1027
HHSL	Single Horizontal with Left Hand Reverse	\$855
HHSR	Single Horizontal with Right Hand Reverse	\$855
HVD	Double Vertical	\$1039

How to Order

Specify quantity and the following information. Order related products separately.

HOUSING TYPE	MODEL SERIES	SPECIFY LENGTH (NOT USED IN PART NUMBER)
HHD	- 32	(83")
HHD	32	HHD Max Length 96"
HHSL	62	HHSL Max Length 48"
HHSR	82	HHSR Max Length 48"
HVD		HVD Max Length 96"





Dress Covers

MODEL	DESCRIPTION	BK	BP	CL	SP
DC-32	For M32	\$53	\$136	\$53	\$136
DC-62	For M62	\$53	\$136	\$53	\$136
DC-82	For M82	\$60	\$143	\$60	\$143
DDC-32	Double — For M32	\$86		\$86	
DDC-62	Double — For M62	\$86		\$86	

How to Order

Specify quantity and the following information. Order related products separately.

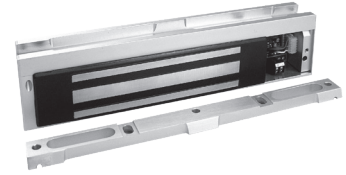
DRESS COVER	MODEL	FINISH
DC	- 32	BK
DC Dress Cover	32	BK Black Anodized
DDC Double Dress Cover (available in models 32 & 62 in BK and CL finishes only)	62	BP Brass Polished
	82	CL Clear Anodized
		SP Stainless Polished

M32, M62, M82 Accessories

ITEM	DESCRIPTION	PRICE
AOS-62	Offset Strike Plate for M62	\$145
AOS-62D	Offset Strike Plate for M62D	\$180
AOS-82	Offset Strike Plate for M82	\$191
APS-32	Strike Plate for M32	\$136
APS-62	Strike Plate for M62	\$152
APS-82	Strike Plate for M82	\$178
ASS-32	Strike Plate for M32— Split Set with Fasteners & Sex Bolt	\$188
ASS-62	Strike Plate for M62— Split Set with Fasteners & Sex Bolt	\$216
ASS-82	Strike Plate for M82— Split Set with Fasteners & Sex Bolt	\$240
EASB-250	Energy Absorbing Bolt — 1/4" Spacer Kit	\$54
EASB-32	Energy Absorbing Sex Bolt for M32	\$312
EASB-62	Energy Absorbing Sex Bolt for M62	\$418
EASB-82	Energy Absorbing Sex Bolt for M82	\$418
SASM	Shock Absorbing Strike Mount for M32, M62, M82	\$86
SB-1	Sex Bolt Replacement, Clear	\$15
SB-1-03	Sex Bolt Replacement, Polished Brass	\$38
SB-1-10B	Sex Bolt Replacement, Oil-Rubbed Bronze	\$38
TDK-1	Thick Door Kit	\$34

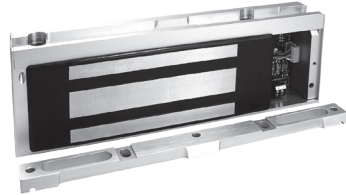
M38 600 lbs Durable Magnalocks®

ITEM	DESCRIPTION	PRICE
M38	12/24 VDC	\$542
M38D	12/24 VDC, DPS	\$631
M38DL	12/24 VDC, DPS, LED	\$670
M38DLS	12/24 VDC, DPS, LED, Senstat	\$759
M38DLST	12/24 VDC, DPS, LED, Senstat, Tamper	\$823
M38DS	12/24 VDC, DPS, Senstat	\$720
M38LS	12/24 VDC, LED, Senstat	\$670



M68 1,200 lbs Durable Magnalocks®

ITEM	DESCRIPTION	PRICE
M68	12/24 VDC	\$675
M68D	12/24 VDC, DPS	\$764
M68DL	12/24 VDC, DPS, LED	\$803
M68DLS	12/24 VDC, DPS, LED, Senstat	\$892
M68DLST	12/24 VDC, DPS, LED, Senstat, Tamper	\$956
M68DS	12/24 VDC, DPS, Senstat	\$852
M68S	12/24 VDC, Senstat	\$764
M68LS	12/24 VDC, LED, Senstat	\$803



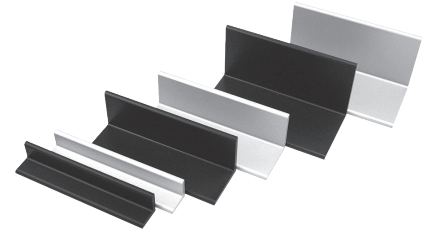
Accessories

ITEM	DESCRIPTION	PRICE
DC-38SP	Stainless Polished Dress Cover for M38	\$136
DC-68SP	Stainless Polished Dress Cover for M68	\$136
TJ-38CL	Clear Anodized In-Swing Door Kit for M38	\$226
TJ-68CL	Clear Anodized In-Swing Door Kit for M68	\$226

Universal Magnalock Accessories

Header Extension Brackets

MODEL	DESCRIPTION	BK	CL
HEB-1xx-8	1" x 1" x 8"	\$62	\$51
HEB-1xx-12	1" x 1" x 12"	\$72	\$56
HEB-2xx-8	2" x 2" x 8"	\$80	\$67
HEB-2xx-12	2" x 2" x 12"	\$83	\$73
HEB-3xx-8	3" x 3" x 8"	\$92	\$83
HEB-3xx-12	3" x 3" x 12"	\$103	\$87
HEB-3G	3" x 3" x 8" for Glass Door	\$99	



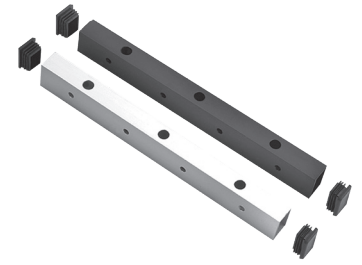
How to Order

Specify quantity and the following information. Order related products separately.

MODEL	SIZE	FINISH	SIZE
HEB	-1	BK	-8
HEB Header	1 1" x 1"	BK Black Anodized	8
Extension	2 2" x 2"	CL Clear Anodized	12
	3 3" x 3"		

Universal Header Brackets

MODEL	DESCRIPTION	BK	CL
UHB-xx-8	8" Header Bracket	\$107	\$91
UHB-xx-12	12" Header Bracket	\$148	\$131



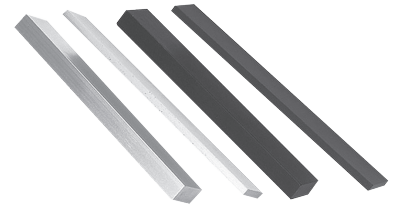
How to Order

Specify quantity and the following information. Order related products separately.

MODEL	FINISH	SIZE
UHB	BK	-8
UHB Universal Header Extension	BK Black Anodized CL Clear Anodized	8" 12"

Stop Filler Plates

MODEL	DESCRIPTION	BK	CL
SFP-1/2-xx-8	1/2" x 1-1/4" x 8"	\$47	\$34
SFP-1/2-xx-12	1/2" x 1-1/4" x 12"	\$51	\$39
SFP-1/4-xx-8	1/4" x 1-1/4" x 8"	\$47	\$36
SFP-1/4-xx-12	1/4" x 1-1/4" x 12"	\$51	\$39
SFP-3/8-xx-8	3/8" x 1-1/4" x 8"	\$47	\$36
SFP-3/8-xx-12	3/8" x 1-1/4" x 12"	\$51	\$40
SFP-5/8-xx-8	5/8" x 1-1/4" x 8"	\$47	\$38
SFP-5/8-xx-12	5/8" x 1-1/4" x 12"	\$53	\$41



How to Order

Specify quantity and the following information. Order related products separately.

MODEL	SIZE	FINISH	SIZE
SFP	-1/2	BK	-8
SFP Stop Filler Plate	1/2" 1/4" 3/8" 5/8"	BK Black Anodized CL Clear Anodized	8" 12"

Additional Accessories

ITEM	DESCRIPTION	PRICE
AKG	Adhesive Kit for GDB	\$203
DCP-12x3	Dress Cover Plate, 12" x 3" for larger strikes (M380, M680)	\$40
GDB	Glass Door Bracket	\$84
IK	Installation Kit	\$598



DM62 Double 1,200 lbs Durable Magnalocks®

ITEM	DESCRIPTION	PRICE
DM62	12/24 VDC	\$1157
DM62B	12/24 VDC, MBS	\$1411
DM62D	12/24 VDC, DPS	\$1331
DM62BD	12/24 VDC, MBS, DPS	\$1556



Accessories

ITEM	DESCRIPTION	PRICE
ASCWB-DM62CL	Alum 1-1/2" Spacer — Concrete/Wood Bracket, DM62, Clear	\$203

How to Order

Specify quantity and the following information. Order related products separately.

MODEL SERIES	MONITORING OPTIONS	STRIKE PLATE OPTIONS
DM62	BD	– OS
DM62	(blank) No Monitoring B BondSTAT Monitor D Door Position Switch	(blank) Standard Strike OS Offset Strike

M34R 500 lbs. Recessed Magnalocks®

ITEM	DESCRIPTION	PRICE
M34R	12/24 VDC, Recessed	\$485
M34RB	12/24 VDC, Recessed, MBS	\$613
M34RD	12/24 VDC, Recessed, DPS	\$572
M34RBD	12/24 VDC, Recessed, MBS, DPS	\$685



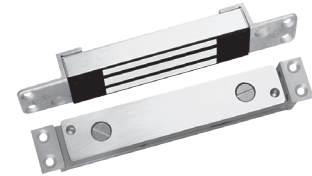
SAM 1,200 lbs. Shear Aligning Magnalocks®

ITEM	DESCRIPTION	PRICE
SAM	12/24 VDC, Self Aligning	\$1101
SAMB	12/24 VDC Shear Aligning, MBS	\$1201
SAMD	12/24 VDC, Self Aligning, DPS	\$1174
SAMBD	12/24 VDC, Self Aligning, MBS, DPS	\$1269
SAMN	12/24 VDC with Narrow Strike Plate	\$1113



SAM2-24 600 lbs. Mini Shear Magnalocks®

ITEM	DESCRIPTION	PRICE
SAM2-24	600 lbs. Shear Aligning, MBS	\$825
SAM2C-24	24 VDC, Bond Sensor	\$869



Accessories

ITEM	DESCRIPTION	PRICE
SWB-03	SAM Wood Bracket — Brass Polished	\$189
SWB-10B	SAM Wood Bracket — Oil Rubbed Bronze	\$148
SWB-26D	SAM Wood Bracket — Satin Stainless	\$112
SMLS	Surface Mount Housing Lock — Shear	\$207
SMSS	Surface Mount Housing Strike — Shear	\$200

Cabinet Locks

MCL 180 lbs Cabinet Magnalocks®

ITEM	DESCRIPTION	PRICE
MCL-24	24 VDC	\$275



M32-SS 600 lbs Cabinet Magnalocks®

ITEM	DESCRIPTION	PRICE
M32-SS	Standard — No Monitoring	\$575
M32B-SS	BondSTAT monitoring	\$695



Specialty Locks

GL1 Specialty Gate Locks

ITEM	DESCRIPTION	PRICE
GL1-FL	Gate Lock, 12/24 VDC, Standard Fail Locked	\$440
GL1-FLM	Gate Lock, 12/24 VDC, Fail Locked Monitored	\$455
GL1-FS	Gate Lock, 12/24 VDC, Standard Fail Safe	\$440
GL1-FSM	Gate Lock, 12/24 VDC, Fail Safe Monitored	\$455

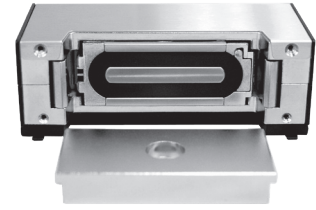


Accessories

ITEM	DESCRIPTION	PRICE
FMB9-4	Post Shim Kit for Flex Mount Brackets — (Set of 4)	\$29
FMK-SL	Flex Mount Kit for Sliding Gate	\$135
FMK-SW	Flex Mount Kit for Swinging Gate	\$167
GMC	Gate Lock Mortise Cylinder (for use with FL Models only)	\$45

MM15 Specialty Electromechanical Magnalock

ITEM	DESCRIPTION	PRICE
MM15	12/24 V, AC/DC	\$595
MM15DT	12/24 V, AC/DC, DPS, Tamper Switch	\$728
MM15G	12/24 V, AC/DC, Gate Conduit	\$662
MM15GDT	12/24 V, AC/DC, Gate Conduit, DPS, Tamper Switch	\$766



Dress Cover

MODEL	BK	BP	BS
DC-MM15	\$49	\$125	\$136



How to Order Specify quantity and the following information. Order related products separately.

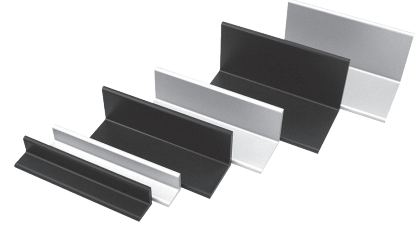
MODEL	FINISH
DC-MM15	BK
DC-MM15 Dress Cover for MM15	BK Black BP Brass Polished BS Brass Satin

Tamper Shield

ITEM	PRICE
MM15-TS	\$50

Brackets

MODEL	DESCRIPTION	BK	CL
HEB-1xx-MM15	1" Header Extension Bracket	\$61	\$47
HEB-2xx-MM15	2" Header Extension Bracket	\$61	\$47
HEB-3xx-MM15	3" Header Extension Bracket	\$61	\$47
SFP-1/2xxMM15	1/2" Stop Filler Plate	\$52	\$39
SFP-3/8xxMM15	3/8" Stop Filler Plate	\$52	\$39
SFP-5/8xxMM15	5/8" Stop Filler Plate	\$54	\$41
Z-MM15	Z-Bracket	\$144	\$129



How to Orders Specify quantity and the following information. Order related products separately.

MODEL	SIZE	FINISH	MODEL	SIZE	FINISH
HEB	-1	BK-MM15	SFP	-1/2	BK-MM15
HEB Header Extension	1 1" x 1"	BK Black Anodized	SFP Stop Filler Plate	1/2"	BK Black Anodized
	2 2" x 2"	CL Clear Anodized		3/8"	CL Clear Anodized
	3 3" x 3"			5/8"	

Keypads & Card Readers

DK-12 Stand Alone Keypad

ITEM	DESCRIPTION	PRICE
DK-12	Digital Keypad System with Illuminated keys — Single Gang	\$222



DK-16 Keypad System

ITEM	DESCRIPTION	PRICE
DK-16	Keypad and Controller — Indoor, Single Gang	\$470
DK-16P	Keypad only — Indoor, Single Gang	\$233



Accessories

ITEM	DESCRIPTION	PRICE
WBB	Wall Mounted, Weatherized, Single Gang Box	\$43
WCC	Wall Mounted, Weather Cover, Single Gang Box	\$60

DK-26 Keypad Systems

MODEL	DESCRIPTION	BK	SS
DK-26	Keypad and Controller — Narrow Stile	\$495	\$481
DK-26P	Keypad only — Narrow Stile	\$257	\$245



How to Order *Specify quantity and the following information. Order related products separately.*

MODEL SERIES	SPECIAL FEATURE	FINISH
DK-26	P	BK
DK-26 Keypad	P Keypad only	BK Black Anodized SS Stainless Steel

DK-37 Wiegand Keypads

MODEL	DESCRIPTION	BK	SS
DK-37W	Narrow Stile with Wiegand Output	\$266	\$253

How to Order

Specify quantity and the following information. Order related products separately.

MODEL SERIES	OUTPUT	FINISH
DK-37	W	BK
DK-37 Keypad	W Wiegand Output	BK Black Anodized SS Stainless Steel



DK-38 Wiegand Keypads

MODEL	DESCRIPTION	PRICE
DK-38W	Single Gang with Wiegand Output	\$253



Accessories

ITEM	DESCRIPTION	PRICE
WBB	Wall Mounted, Weatherized, Single Gang Box	\$43
WCC	Wall Mounted, Weather Cover, Single Gang Box	\$60

R100 Aperio® Card Reader Factory Paired with Wiegand Hub

ITEM	DESCRIPTION	PRICE
R100H-IPS-B	Aperio™ Wireless Card Reader Factory Paired with AH20 (1:1) Wiegand Hub, Black	\$900



Accessories

ITEM	DESCRIPTION	PRICE
R100-DPK	R100 Aperio™ Wireless Card Reader Dress Cover, Aluminum	\$30

R100 Demo Mount

ITEM	DESCRIPTION	PRICE
DEMO-R100-IPS-B	R100 Aperio™ Wireless Card Reader Demo Mount With HID multiCLASS SE Card Technology, HID NFC Mobile Access Enabled	\$1005

Push Buttons & Egress Devices

XMS Request to Exit Motion Sensor

ITEM	DESCRIPTION	PRICE
XMS	Passive Infrared Request to Exit Device	\$262



EEB Emergency Exit Push Buttons

ITEM	DESCRIPTION	PRICE
EEB2	Momentary, SPDT, Single Gang, Green/Red/Blue/Handicap, 30 Sec. Timer	\$160
EEB3N	Momentary, SPDT, Narrow, Green/Red, 30 Sec. Timer	\$160



Accessories

ITEM	DESCRIPTION	PRICE
PB2-LK	2" Button, Illumination Kit for PB2E, PB5E, EEB2 Series Push Button	\$33
PB3-LK	Illumination Kit, Green/Red for PB3E/EEB3N Series	\$33
WBB	Wall Mounted, Weatherized, Single Gang Box	\$43
WCC	Wall Mounted, Weather Cover, Single Gang Box	\$60

PB Exit Push Buttons

ITEM	DESCRIPTION	PRICE
PB	1 1/2" button, Illuminated, Momentary, DPST, Single Gang, Green/Red Lens	\$176
PBA	1 1/2" button, Illuminated, Alternate, DPST, Single Gang, Green/Red Lens	\$176



Accessories

ITEM	DESCRIPTION	PRICE
WBB	Wall Mounted, Weatherized, Single Gang Box	\$43
WCC	Wall Mounted, Weather Cover, Single Gang Box	\$60

PB2 Exit Push Buttons

ITEM	DESCRIPTION	PRICE
PB2	2" Button, Illuminated, Momentary, Single Gang, Green/Red/Handicap	\$113
PB22	2" Button, Illuminated, Momentary, DPDT, Single Gange, Green/Red/Handicap	\$176
PB2E	2" Button, Non-Illuminated, Momentary, Single Gang, SPDT, Green/Red/Handicap	\$82

Accessories

ITEM	DESCRIPTION	PRICE
PB2-LK	2" Button, Illumination Kit for PB2E, PB5E, EEB2 Series Push Button	\$33
WBB	Wall Mounted, Weatherized, Single Gang Box	\$43
WCC	Wall Mounted, Weather Cover, Single Gang Box	\$60



PB3 Push Buttons

ITEM	DESCRIPTION	PRICE
PB3	3/4" Rectangle Button, Illuminated, Momentary, DPST/DPDT, Single Gang, Green/Red Lens	\$121
PB3A	3/4" Rectangle Button, Illuminated, Alternate, DPST/DPDT, Single Gang, Green/Red Lens	\$121
PB3E	3/4" Rectangle Button, Non-Illuminated, Momentary, DPST/DPDT, Single Gang, Green/Red Lens	\$91
PB3EA	3/4" Rectangle Button, Non-Illuminated, Alternate, DPST/DPDT, Single Gang, Green/Red Lens	\$91
PB3N	3/4" Rectangle Button, Illuminated, Momentary, DPST/DPDT, Narrow, Green/Red Lens	\$121
PB3AN	3/4" Rectangle Button, Illuminated, Alternate, DPST/DPDT, Narrow, Green/Red Lens	\$121
PB3EN	3/4" Rectangle Button, Non-Illuminated, Momentary, DPST/DPDT, Narrow, Green/Red Lens	\$91
PB3EAN	3/4" Rectangle Button, Non-Illuminated, Alternate, DPST/DPDT, Narrow, Green/Red Lens	\$91
PB3ER	3/4" Rectangle Button, Non-Illuminated, Remote, Momentary, DPST/DPDT, Surface Mount Green/Red Lens	\$91
PB3EAR	3/4" Rectangle Button, Non-Illuminated, Remote, Alternate, DPST/DPDT, Surface Mount Green/Red Lens	\$91



Accessories

ITEM	DESCRIPTION	PRICE
PB3-LK	Illumination Kit, Green/Red for PB3E/EEB3N Series	\$33
WBB	Wall Mounted, Weatherized, Single Gang Box	\$43
WCC	Wall Mounted, Weather Cover, Single Gang Box	\$60

PB4L Push Buttons

ITEM	DESCRIPTION	PRICE
PB4L-2	1/2" Round Button, Green Illuminated Halo, Momentary, DPDT, Single Gang, Green/Red LED	\$152
PB4LA-2	1/2" Round Button, Green Illuminated Halo, Alternate, DPDT, Single Gang, Green/Red LED	\$152
PB4LAN-2	1/2" Round Button, Green Illuminated Halo, Alternate, DPDT, Narrow Stile, Green/Red LED	\$152
PB4LN-2	1/2" Round Button, Green Illuminated Halo, Momentary, DPDT, Narrow Stile, Green/Red LED	\$152



PB5 Push Buttons

ITEM	DESCRIPTION	PRICE
PB5	2" Round Button, Illuminated, Momentary, SPDT, Single Gang, Green/Red/Handicap	\$139
PB5E	2" Round Button, Non-Illuminated, Momentary, SPDT, Single Gang, Green/Red/Handicap	\$106



Accessories

ITEM	DESCRIPTION	PRICE
PB2-LK	2" Button, Illumination Kit for PB2E, PB5E, EEB2 Series Push Button	\$33
WBB	Wall Mounted, Weatherized, Single Gang Box	\$43
WCC	Wall Mounted, Weather Cover, Single Gang Box	\$60

MK Key Switches

ITEM	DESCRIPTION	PRICE
MK	Momentary, SPDT, Single Gang, Green/Red LED	\$153
MK2	Momentary, DPDT, Single Gang, Green/Red LED	\$179
MKA	Alternate, SPDT, Single Gang, Green/Red LED	\$153
MKA2	Alternate, DPDT, Single Gang, Green/Red LED	\$179
MKAN	Alternate, SPDT, Narrow, Green/Red LED	\$153
MKAN2	Alternate, DPDT, Narrow, Green/Red LED	\$179
MKN	Momentary, SPDT, Narrow, Green/Red LED	\$153
MKN2	Momentary, DPDT, Narrow, Green/Red LED	\$179
MKPZ	Momentary, SPDT, Double Gang, Green/Red LED, Audible	\$230
MKAPZ	Alternate, SPDT, Double Gang, Green/Red LED, Audible	\$230



Accessories

ITEM	DESCRIPTION	PRICE
MKC-KD	Mortise Cylinder for MK Series – Keyed Differently	\$68
MKC-KA	Mortise Cylinder for MK Series – Keyed Alike	\$68
MKS	Momentary, Switch Only	\$39
MKS2	DPDT Momentary, Switch Only	\$65
MKSA	Alternate, Switch Only	\$39
MKSA2	DPDT Alternate, Switch Only	\$65

KP-1 Tubular Key Switches

ITEM	DESCRIPTION	PRICE
KP1	Momentary Switch	\$193
KP1A	Alternate Switch	\$193



WSS Wave Sense™ Switch

ITEM	DESCRIPTION	PRICE
WSS-WSD	Wave Sense Switch, White Single/ Double Gang Faceplate	\$427



Accessories

ITEM	DESCRIPTION	PRICE
WBB	Wall Mounted, Weatherized, Single Gang Box	\$43
WCC	Wall Mounted, Weather Cover, Single Gang Box	\$60

SP-1 Capacitive Button

ITEM	DESCRIPTION	PRICE
SP-1	Touch Sense Plate	\$210
SP-1L	Label Touch Plate [SP-1]	\$8
SP-1LH	Label Touch Plate [SP-1] — Handicap Decal	\$8



DSB Dual Sense® Egress Bar

MODEL	DESCRIPTION	BK	CL
DSB	Non-Illuminated, 36" (Standard), 42", or 48"	\$588	\$578
DSB-xxl	Illuminated, 36" (Standard), 42", or 48"	\$779	\$769
EL-DSB	ElectroLynx, Illuminated, 36" Only	\$626	\$620



Accessories

ITEM	DESCRIPTION	PRICE
DSB-TDM	Through Door Mounting Kit for DSB	\$20
TCP-CL	Touch Bar Cover Plates — Set of 2, Clear Anodized	\$103
TCP-BK	Touch Bar Cover Plates — Set of 2, Black Anodized	\$103

How to Order Specify quantity and the following information. Order related products separately.

CONNECTOR STYLE	MODEL SERIES	FINISH	ILLUMINATION	BAR LENGTH
EL	– DSB	– CL	I	42
(blank) No Connectors	DSB Dual Sense Bar	BK Black Anodized	(blank) Non Illuminated	(blank) 36" Standard Unit
EL ElectroLynx Connectors		CL Clear Anodized	I Illuminated	42 42" Length 48 48" Length

Note: Not every combination above is possible. Please contact the factory if you need a combination of features not listed on this page.

TSB Touch Sense® Egress Bar

MODEL	DESCRIPTION	BK	CL
TSB	36" (Standard), 42", or 48"	\$534	\$509
TSB-xxT	Trailing Edge Timer [3 Sec.] — BK 36" only, CL 36" or 42"	\$534	\$509
EL-TSB	ElectroLynx — 36" (Standard), 42", or 48"	\$557	\$531
DTSB	Dummy with End Caps & Fasteners — 36" (Standard), 42", or 48"	\$277	\$252



Accessories

ITEM	DESCRIPTION	PRICE
TSB-TDM	Through Door Mounting Kit for TSB	\$19
TCP-BK	Touch Bar Cover Plates — Set of 2, Black Anodized	\$103
TCP-CL	Touch Bar Cover Plates — Set of 2, Clear Anodized	\$103

How to Order Specify quantity and the following information. Order related products separately.

CONNECTOR STYLE	MODEL SERIES	FINISH	SPECIAL FEATURES	BAR LENGTH
EL	– TSB	– CL	T	– 42
(blank) No Connectors	TSB Touch Sense Bar	BK Black Anodized	T Trailing Edge Timer	(blank) 36" Standard Unit
EL ElectroLynx Connectors		CL Clear Anodized		42" 48"

Note: Not every combination above is possible. Please contact the factory if you need a combination of features not listed on this page.

EMB Electromechanical Egress Bar

MODEL	DESCRIPTION	BK	CL
EMB	36" (Standard), 42", or 48"	\$323	\$310
WEMB	Weather Resistant, 36" (Standard), 42", or 48"	\$356	\$342



Accessories

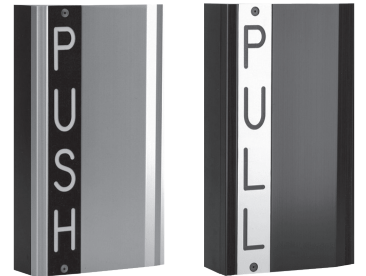
MODEL	DESCRIPTION	BK	CL
TCP	Touch Bar Cover Plates — Set of 2	\$103	\$103

How to Order *Specify quantity and the following information. Order related products separately.*

MODEL SERIES	FINISH	BAR LENGTH
EMB	– CL	– 48
EMB Electromechanical Bar	BK Black Anodized	(blank) 36" Standard Unit
WEMB Weather Resistant Electromechanical Bar	CL Clear Anodized	42" 48"

TSH Touch Sense® Handle

MODEL	DESCRIPTION	BK	CL
TSH	Push/Pull	\$524	\$524
EL-TSH	ElectroLynx — Push/Pull	\$557	\$557

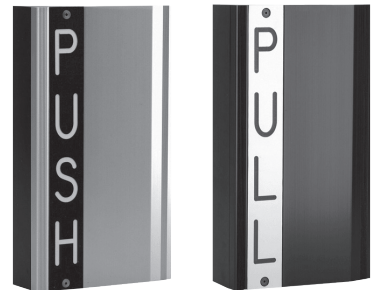


How to Order *Specify quantity and the following information. Order related products separately.*

CONNECTOR STYLE	MODEL SERIES	FINISH
EL	– TSH	– CL
(blank) No Connectors	TSH Touch Sense Handle	BK Black Anodized
EL ElectroLynx Connectors		CL Clear Anodized

EMH Electromechanical Handle

MODEL	DESCRIPTION	BK	CL
EMH	Push/Pull	\$518	\$518
EL-EMH	ElectroLynx — Push/Pull		\$542



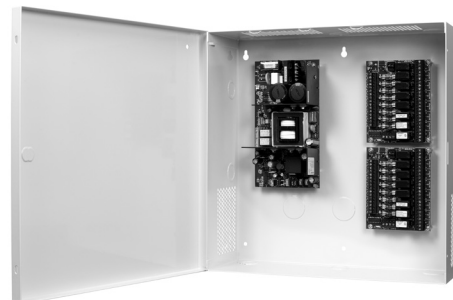
How to Order *Specify quantity and the following information. Order related products separately.*

CONNECTOR STYLE	MODEL SERIES	FINISH
EL	– EMH	– CL
(blank) No Connectors	EMH Electromechanical Handle	BK Black Anodized
EL ElectroLynx Connectors		CL Clear Anodized

Power

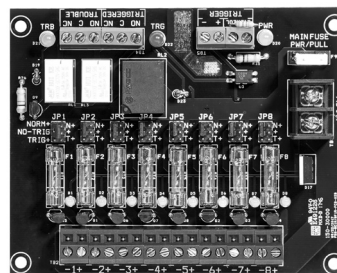
AQD & AQS Series Power Supplies with Enclosures

ITEM	DESCRIPTION	PRICE
AQD1	1 Amp, Dual Voltage Power Supply with enclosure	\$242
AQD2	2 Amp, Dual Voltage Power Supply with enclosure	\$278
AQD4	4 Amp, Dual Voltage Power Supply with enclosure	\$332
AQD6	6 Amp, Dual Voltage Power Supply with enclosure	\$407
AQS1210	10 Amp, 12 VDC Power Supply with enclosure	\$468
AQS1216	16 Amp, 12 VDC Power Supply with enclosure	\$516
AQS2410	10 Amp, 24 VDC Power Supply with enclosure	\$508



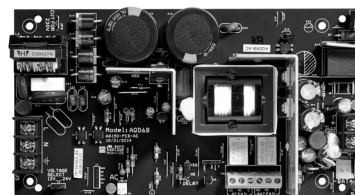
AQD & AQS Series Distribution Boards

ITEM	DESCRIPTION	PRICE
PDB-1R	Fire Trigger / Relay Interface Board	\$51
PDB-4F1	4 Glass Fused Outputs, 1 Amp each	\$51
PDB-4F2	4 Glass Fused Outputs, 2 Amp each	\$51
PDB-4C1	4 PTC Outputs, 1 Amp each	\$51
PDB-4C2	4 PTC Outputs, 2 Amp each	\$51
PDB-8F1	8 Glass Fused Outputs, 1 Amp each	\$57
PDB-8F2	8 Glass Fused Outputs, 2 Amp each	\$57
PDB-8C1	8 PTC Outputs, 1 Amp each	\$57
PDB-8C2	8 PTC Outputs, 2 Amp each	\$57
PDB-8F8R1	8 Glass Fused Outputs with Relays, Fire Trigger, 1 Amp each	\$143
PDB-8F8R2	8 Glass Fused Outputs with Relays, Fire Trigger, 2 Amp each	\$143
PDB-8C8R1	8 PTC Outputs with Relays, Fire Trigger, 1 Amp each	\$143
PDB-8C8R2	8 PTC Outputs with Relays, Fire Trigger, 2 Amp each	\$143
PDB-8C1R1	8 PTC Outputs, Fire Trigger/Relay, 1 Amp each	\$118
PDB-8C1R2	8 PTC Outputs, Fire Trigger/Relay, 2 Amp each	\$118
PDB-8F1R1	8 Glass Fuse Outputs, Fire Trigger/Relay, 1 Amp each	\$118
PDB-8F1R2	8 Glass Fuse Outputs, Fire Trigger/Relay, 2 Amp each	\$118



AQD & AQS Series Power Supply Boards Only

ITEM	DESCRIPTION	PRICE
AQD1B	1 Amp, Dual Voltage Power Supply Board Only	\$149
AQD2B	2 Amp, Dual Voltage Power Supply Board Only	\$173
AQD4B	4 Amp, Dual Voltage Power Supply Board Only	\$212
AQD6B	6 Amp, Dual Voltage Power Supply Board Only	\$274
AQS1210B	10 Amp, 12 VDC Power Supply Board Only	\$325
AQS1216B	16 Amp, 12 VDC Power Supply Board Only	\$357
AQS2410B	10 Amp, 24 VDC Power Supply Board Only	\$357



Common power supply configurations for reference:

ITEM	DESCRIPTION	PRICE
AQD1-4F1	1 Amp, Dual Voltage Power Supply with enclosure, 4 outputs, 1 Amp glass fuse	\$286
AQD1-4C1	1 Amp, Dual Voltage Power Supply with enclosure, 4 outputs, 1 Amp PTC polyswitch	\$286
AQD2-1R	2 Amp, Dual Voltage Power Supply with enclosure, Fire Trigger	\$323
AQD2-4C1	2 Amp, Dual Voltage Power Supply with enclosure, 4 outputs, 1 Amp PTC polyswitch	\$323
AQD2-4F1	2 Amp, Dual Voltage Power Supply with enclosure, 4 outputs, 1 Amp glass fuse	\$323
AQD2-8C8R1	2 Amp, Dual Voltage Power Supply with enclosure, 8 outputs, 1 Amp PTC polyswitch, 8 relays, Fire Trigger	\$410
AQD2-8F8R1	2 Amp, Dual Voltage Power Supply with enclosure, 8 outputs, 1 Amp glass fuse, 8 relays, Fire Trigger	\$410
AQD4-4F1	4 Amp, Dual Voltage Power Supply with enclosure, 4 outputs, 1 Amp glass fuse	\$372
AQD4-8C1	4 Amp, Dual Voltage Power Supply with enclosure, 8 outputs, 1 Amp PTC polyswitch	\$377
AQD4-8C8R1	4 Amp, Dual Voltage Power Supply with enclosure, 8 outputs, 1 Amp PTC polyswitch, 8 relays, Fire Trigger	\$459
AQD4-8F8R1	4 Amp, Dual Voltage Power Supply with enclosure, 8 outputs, 1 Amp glass fuse, 8 relays, Fire Trigger	\$459
AQD6-8C2	6 Amp, Dual Voltage Power Supply with enclosure, 8 outputs, 2 Amp PTC polyswitch	\$453
AQD6-8C8R2	6 Amp, Dual Voltage Power Supply with enclosure, 8 outputs, 2 Amp PTC polyswitch, 8 relays, Fire Trigger	\$539
AQD6-8F8R2	6 Amp, Dual Voltage Power Supply with enclosure, 8 outputs, 2 Amp glass fuse, 8 relays, Fire Trigger	\$539
AQS1210-16F2	10 Amp, 12 VDC Power Supply with enclosure, 16 outputs, 2 Amp glass fuse	\$582
AQS1210-16F16R2	10 Amp, 12 VDC Power Supply with enclosure, 16 outputs, 2 Amp glass fuse, 16 relays, Fire Trigger	\$753
AQS1216-16F16R2	16 Amp, 12 VDC Power Supply with enclosure, 16 outputs, 2 Amp glass fuse, 16 relays, Fire Trigger	\$794
AQS2410-16F2	10 Amp, 24 VDC Power Supply with enclosure, 16 outputs, 2 Amp glass fuse	\$622
AQS2410-16F16R2	10 Amp, 24 VDC Power Supply with enclosure, 16 outputs, 2 Amp glass fuse, 16 relays, Fire Trigger	\$794
AQS2410-16C16R2	10 Amp, 24 VDC Power Supply with enclosure, 16 outputs, 2 Amp PTC polyswitch, 16 relays, Fire Trigger	\$794

How to Order Specify quantity and the following information. Order related products separately.

MODEL SERIES	OUTPUT TYPE	VOLTAGE	OUTPUT POWER	ENCLOSURE STYLE	NUMBER OF OUTPUTS	FUSE TYPE	NUMBER OF RELAYS	RELAYS	FUSE SIZE
AQ	D		6	-	8	F	8	R	2
AQ	D Dual Voltage *	(blank) Dual Voltage *	1 *	- In Enclosure	(blank) One Output, No Distribution Board				
	S Single Voltage **	12 12 VDC ** 24 24 VDC ***	2 * 4 * 6 * 10 ** 16 **	B Circuit Board Only	4 8 12 16	F Glass + Fuses C PTC + Polyswitch	1 2 8 9 16	R Relays	1 1 Amp 2 2 Amp

*Dual Voltage Option Only. **Single Voltage Option Only. *** Available for 10A Option Only.

† Fuse type and size must be the same for both distribution boards for standard ordering. For custom configurations, please contact the factory at 800.626.7590.

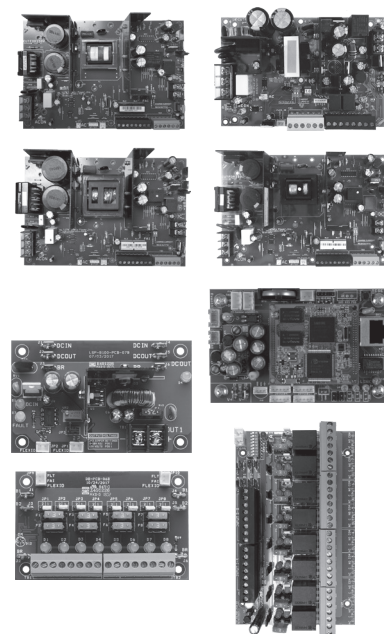
AQL Series Power Supplies with E1 Enclosures

ITEM	DESCRIPTION	PRICE
AQL4-E1	4 Amp at 12 VDC or 3 Amp at 24 VDC Power Supply with E1 Enclosure	\$382
AQL6-E1	6 Amp, Dual Voltage Power Supply with E1 Enclosure	\$461
AQL102-E1	10 Amp at 12 VDC, Single Voltage Power Supply with E1 Enclosure	\$499
AQL104-E1	10 Amp at 24 VDC, Single Voltage Power Supply with E1 Enclosure	\$534



AQL Series Power Supplies Boards Only

ITEM	DESCRIPTION	PRICE
AQL4	4 Amp at 12 VDC or 3 Amp at 24 VDC, Dual Voltage Power Supply Board Only	\$294
AQL6	6 Amp, Dual Voltage Power Supply Only	\$342
AQL102	10 Amp at 12 VDC, Single Voltage Power Supply Only	\$381
AQL104	10 Amp at 24 VDC, Single Voltage Power Supply Only	\$417



AQL Series Modules

ITEM	DESCRIPTION	PRICE
B100	Secondary Voltage Module	\$99
D8	3 A ATO Fused Power Distribution Module	\$67
D8P	2.5 A Polyswitch Fused Power Distribution Module	\$67
R8	Power Relay Module	\$137
NL4	Netlink™ Power Monitoring Module	\$525

AQL Series Common Configurations

ITEM	DESCRIPTION	PRICE
AQL4-R8E1	4 Amp at 12 VDC or 3 Amp at 24 VDC Power Supply, Power Relay Module with E1 Enclosure	\$521
AQL6-B100R8E1	6 Amp, Dual Voltage Power Supply, Secondary Voltage Module, Power Relay Module with E1 Enclosure	\$696
AQL102-2D8E1	10 Amp at 12 VDC, Single Voltage Power Supply, (2) 3 Amp ATO Fused Power Distribution Modules with E1 Enclosure	\$632
AQL104-B1002D8E1	10 Amp at 24 VDC, Single Voltage Power Supply, Secondary Voltage Module, (2) 3 Amp ATO Fused Power Distribution Module with E1 Enclosure	\$764

How to Order Specify quantity and the following information. Order related products separately.

POWER SUPPLY MODULE	SECONDARY VOLTAGE MODULE	DISTRIBUTION MODULE	D8 FUSE STYLE	RELAY MODULE	NETLINK MODULE	ENCLOSURE
AQL4	-B100	2D8	P	R8	NL4	E1
AQL4	(blank)	(blank)	(blank) 3 A ATM Fuse	(blank)	(blank)	(blank) Module Only
AQL6	B100	D8	P 2.5 A PTC Polyswitch	R8	NL4	E1
AQL102		2D8		2R8		
AQL104		3D8		3R8		
		4D8				
		5D8				
		6D8				

AQL4 in an E1 enclosure has six module spaces where B100, NL4 and D8/D8P each take up one module space. R8 takes up two module spaces.

AQL6, AQL102 and AQL104 in an E1 enclosure has four module spaces where B100, NL4 and D8/D8P each take up one module space. R8 takes up two module spaces.

BPS Linear Power Supplies

ITEM	DESCRIPTION	PRICE
BPS-12/24-1	Dual Voltage 12/24 VDC, 1 Amp	\$425
BPS-12-1	12 VDC, 1 Amp	\$337
BPS-12-3	12 VDC, 3 Amp	\$651
BPS-12-45	12 VDC, 4.5 Amp	\$1058
BPS-12-6	12 VDC, 6 Amp	\$1172
BPS-12-9	12 VDC, 9 Amp	\$1416
BPS-12-15	12 VDC, 15 Amp	\$1745
BPS-24-1	24 VDC, 1 Amp	\$342
BPS-24-2	24 VDC, 2 Amp	\$651
BPS-24-3	24 VDC, 3 Amp	\$989
BPS-24-4	24 VDC, 4 Amp	\$1172
BPS-24-6	24 VDC, 6 Amp	\$1416
BPS-24-10	24 VDC, 10 Amp	\$1745
BPSM-12-6	12 VDC, Status Monitor, 6 Amp	\$1240
BPSM-12-9	12 VDC, Status Monitor, 9 Amp	\$1485
BPSM-12-15	12 VDC, Status Monitor, 15 Amp	\$1809
BPSM-24-4	24 VDC, Status Monitor, 4 Amp	\$1240
BPSM-24-6	24 VDC, Status Monitor, 6 Amp	\$1485
BPSM-24-10	24 VDC, Status Monitor, 10 Amp	\$1809

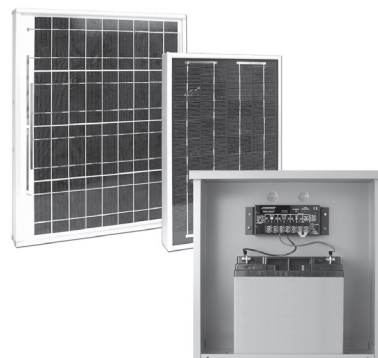


BPSS Solar Power Supplies

ITEM	DESCRIPTION	PRICE
BPSS-10	12 VDC with 10 W Solar Panel and 9 Ah Battery	\$1117
BPSS-20	12 VDC with 20 W Solar Panel and 18 Ah Battery	\$1265

BPSS Accessories

ITEM	DESCRIPTION	PRICE
PMK-3	Mounting Kit 3 in Pole for CCM Nema Enclosure	\$135
SPK	Solar Panel Kit — 20 W	\$878
SWK	High Wind Kit for 20 W Solar Panel	\$178
B-12-9	Battery — 12 VDC, 9 Ah	\$213
B-12-18	Battery — 12 VDC, 18 Ah	\$275



AQE Single Port Injector Single-Port PoE

ITEM	DESCRIPTION	PRICE
AQE30	MidSpan Injector, 2.6 Amp, Dual Voltage	\$226
AQE30E	MidSpan Extractor, 0.6 Amp	\$226



PSP PSP Plug-In Power Supplies

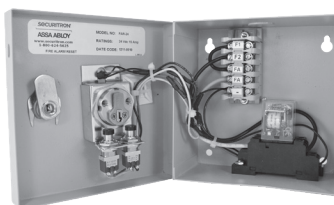
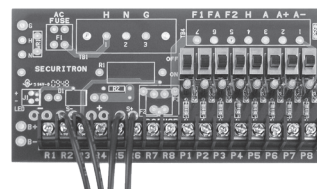
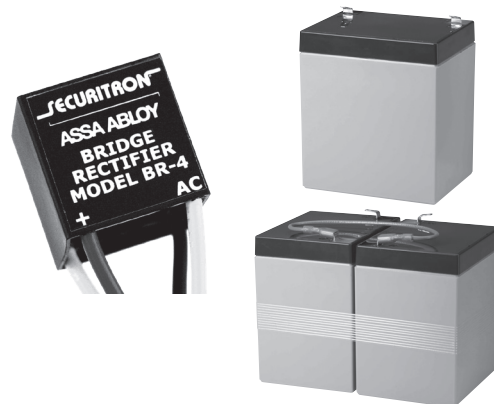
ITEM	DESCRIPTION	PRICE
PSP-12	12 VDC, 700 mA	\$67
PSP-24	24 VDC, 350 mA	\$65
PSP-12-3	12 VDC, 3 Amp	\$132
PSP-24-1.5	24 VDC, 1.5 Amp	\$132



Additional Power Products

Additional Power Products

ITEM	DESCRIPTION	PRICE
BR-4	Bridge Rectifier — 4 Amp	\$46
B-12-08	Battery — 12 VDC, 0.8 Amp	\$96
B-12-5	Battery — 12 VDC, 5 Amp	\$75
B-24-5	Battery — 24 VDC, 5 Amp	\$165
CKL	Cabinet Key Lock	\$30
CCB-8-12	Central Control Board — 12 VDC, 8 Fused Outputs	\$158
CCB-8-24	Central Control Board — 24 VDC, 8 Fused Outputs	\$158
CFAR-12	Fire Alert Reset Control — Canada — 12 VDC, Board Only	\$94
CFAR-24	Fire Alert Reset Control — Canada — 24 VDC, Board Only	\$95
FAR-12	Fire Alert Reset Control — 12 VDC	\$341
FAR-24	Fire Alert Reset Control — 24 VDC	\$341
PSM-12	Power Supply Monitor — 12 VDC	\$975
PSM-24	Power Supply Monitor — 24 VDC	\$975



Power Transfers

CEPT Concealed Electrical Power Transfers

MODEL	606	612	613E	630	BSP
CEPT-10	\$553	\$553	\$528	\$428	\$528
EL-CEPT	\$638	\$638	\$613	\$513	\$613
CEPT-C5E	\$603	\$603	\$578	\$479	\$578
CEPT-NW	\$553		\$528	\$428	\$528



How to Order *Specify quantity and the following information. Order related products separately.*

WIRE CONNECTORS	MODEL	NUMBER OF WIRES	FINISH
EL	– CEPT	– C5E	– 613E
(blank) No Connectors EL ElectroLynx® Connectors	CEPT Concealed	(blank) 12 Wires (for EL CEPT only) 10 10 Wires C5E 9 Wires NW	(blank) 630 Satin Stainless Steel 04 606 Satin Brass 10 612 Satin Bronze 613E Dark Oxidized Satin Bronze

SEPT Square-Cut Electrical Power Transfers

ITEM	DESCRIPTION	PRICE
SEPT	Cut Standard Version	\$88
SEPT-10	10 Wire	\$125
SEPT-C5E	CAT-5E Compatible	\$120
EL-SEPT	ElectroLynx® Connectors (Compatible with 12-22AWG wires)	\$116



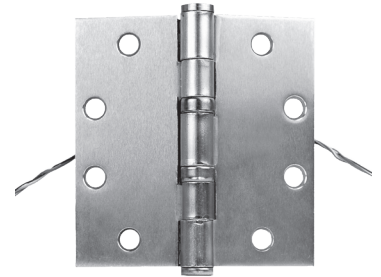
EPT Electrical Power Transfers

ITEM	DESCRIPTION	PRICE
EPT	10" Cord, Standard Swing	\$78
EPT-SC	10" Cord, Swing Clear	\$118
EL-EPT	Electrolynx® 10" Cord, Standard Swing	\$121
EL-EPT-SC	Electrolynx® 10" Cord, Swing Clear	\$159
EPTL	18" Cord, Standard Swing	\$105
EL-EPTL	Electrolynx® 18" Cord, Standard Swing	\$146



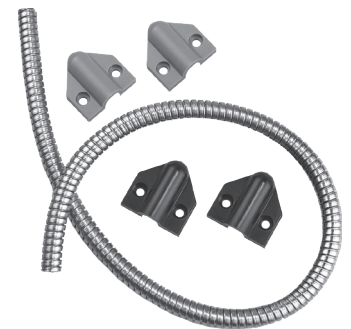
EH Electric Hinges

ITEM	DESCRIPTION	PRICE
EH-40	6 Wire [4.5" x 4.0"]	\$312
EH-45	6 Wire [4.5" x 4.5"]	\$312



TSB-C Door Cords

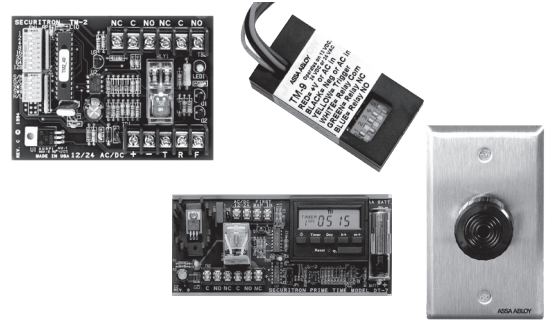
ITEM	DESCRIPTION	PRICE
TSB-C	With Caps, Gray/Black, 18"	\$41
TSB-CXL	With Caps, Gray/Black, 36"	\$50



Accessories

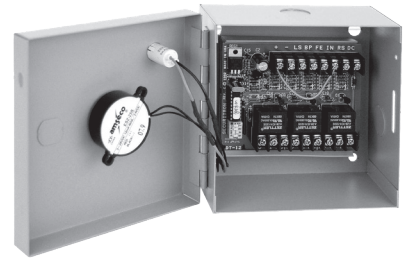
TM-2, TM-9, DT-7 and PZ1 Timers & Alarms

ITEM	DESCRIPTION	PRICE
TM-2	Multi-Function Timer, 1-255 seconds	\$170
TM-9	Time Mate Timer, 2-36 Seconds	\$87
DT-7	Digital Timer, 7 day	\$273
PZ1	Piezo on Keyplate — Single Gang	\$83



BA-DPA Drop Prop Alarm Monitoring

ITEM	DESCRIPTION	PRICE
BA-DPA-12	12 VDC with Boxed Alarm	\$298
BA-DPA-24	24 VDC With Boxed Alarm	\$298



DPS Door Position Switches

MODEL	DESCRIPTION	BK	GR	W
DPS-M	For Metal Doors	\$35	\$35	\$35
DPS-W	For Wood Doors	\$26	\$26	\$26



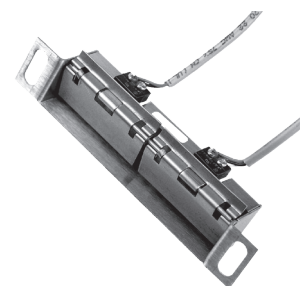
MSS Magnetic Switch/High Security

ITEM	DESCRIPTION	PRICE
MSS-1	Magnetic High Security Switch	\$256
MSS-1-RT	Remote Test	\$300
MSS-1C	Concealed	\$256
MSS-1C-RT	Concealed, Remote Test	\$300
MSS-1G	Surface Mount	\$256
MSS-1G-RT	Surface Mount, Remote Test	\$300



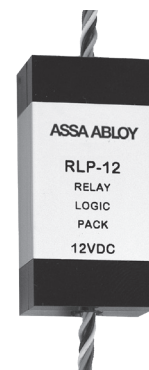
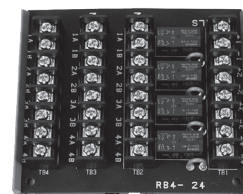
LM Latch Monitors

ITEM	DESCRIPTION	PRICE
LML-1	ANSI, 4-7/8, Strike, SPDT, 3 Amp	\$139
LML-2	ANSI, 4-7/8, Strike, SPDT, 3 Amp, Dual Switches	\$188
LMS-1	ANSI, 2-3/4", Strike, SPDT, 3 Amp	\$139



RLP, RB-4 Relay Logic Packs & Boards

ITEM	DESCRIPTION	PRICE
RLP-12	Relay Logic Pack — 12 VDC	\$68
RLP-24	Relay Logic Pack — 24 VDC	\$65
RB-4-12	Relay Board — 12 VDC	\$135
RB-4-24	Relay Board — 24 VDC	\$135



Warranties

In 1999 Securitron® introduced the first no-fault, no-questions asked warranty to the industry, MagnaCare®. We believe that the best products in the industry should be supported by our commitment to deliver the highest quality products and services. This is our expectation and commitment to you – our valued customer.



**MagnaCare
Warranty**

MagnaCare Warranty

Duration: Lifetime

Condition: Any reason, including, but not limited to, installation error, vandalism or force majeure.

Replacement: Replacement product or equivalent shipped at Securitron expense via next day air freight in most cases.

Products Covered:

- Electromagnetic and Specialty Locks
- Power Supplies (excluding BPSS) and Power Transfers
- Push Buttons, Keypads, Keyswitches and Egress Devices

.....



**SecuriCare
Warranty**

SecuriCare 3-year Warranty

Duration: Three years from date of shipment

Condition: Any reason, including but not limited to, installation error, vandalism or force majeure

Replacement: Replacement product or equivalent shipped at Securitron's expense via next day air freight in most cases.

Products Covered:

- R100 Aperio® Wireless Card Reader
- BPSS Solar Power Supplies
- GL1
- Accessories

Check your individual product to determine warranty coverage. Batteries and consumables are not covered by Securitron Warranty programs. Replacement products, at Securitron's sole option, may be the identical item or a unit which serves as a functional replacement. If the customer has an account with Securitron or a valid credit card, the customer may order an advance replacement product, whereby Securitron will charge the customer's account for the price of the product plus next day air freight, and will credit back to the customer the full amount of the charge, including outbound freight, upon Securitron's receipt of the original product from the customer. Securitron's sole and exclusive liability, and customer's sole remedy, is limited to the replacement of the Securitron product when delivered to Securitron's facility (freight and insurance charges prepaid by customer).

Securitron® Terms & Conditions

PRICES: All prices are subject to change without notice. Prices listed on the Securitron website will serve as the most current list price. All shipments will be made at prices in effect at the time of shipment. The customer shall be responsible for payment of all applicable sales and/or use taxes and freight costs.

MINIMUM ORDER: Minimum product charge per invoice is \$150.00 USD.

PAYMENT TERMS: Net thirty (30) days from date of invoice. Interest at the rate of up to 1-1/2% per month may be charged on all past due accounts. An order received on an account which has not been paid within 45 days of the date of invoice may not be processed until the account is current. Custom orders may require a deposit.

DELIVERY TERMS: All prices are Ex-works factory. Purchaser assumes the risk of loss or damage to the goods while in transit from the point of shipment. Securitron reserves the right to make delivery in installments. Installments shall be separately invoiced and paid for when due. Delay in delivery of an installment shall not relieve the purchaser of its obligation to accept remaining deliveries.

FREIGHT POLICY: All Purchase Orders received with a minimum net value of \$3,500 will qualify automatically for free standard freight within the continental United States. This minimum amount applies per Purchase Order to qualify and does not include free expedited freight. Qualified orders may ship partial or ship complete at your preference. Qualified orders that ship partial will not incur freight charges. All shipments that do not qualify for free freight will be charged for freight based upon our terms in effect at the time of shipment. Customers may provide their own carrier account number for expedited freight methods or for any Purchase Order to be used to cover freight costs. Minimum amounts are subject to change without notice.

SHORTAGE: Any claim for shortages must be made to Securitron in writing within one (1) week of receipt of merchandise.

WARRANTY RETURNS: A Customer Care Form (CCF) for defective product must be obtained from Securitron before any merchandise can be returned. CCF's are valid for sixty (60) days from date of issuance. Goods returned under the terms of MagnaCare® and SecuriCare® Warranties may require a copy of the original invoice.

RETURNS: A Customer Care Form (CCF) must be obtained from Securitron before any merchandise can be returned. CCF's are valid for sixty (60) days from date of issuance. Items that are not factory sealed, or that are returned later than 90 days from the date of receipt are subject to a restocking charge plus an additional charge for any damage.

CANCELLATIONS: Any order may be subject to a 5% cancellation charge for catalog items. Cancellation of non-catalog or custom items will be subject to a 20% cancellation charge plus all costs (both direct and indirect) incurred by manufacturing at the point of cancellation that are properly allocated to the cancelled item(s).

LIMITATION OF LIABILITY: Neither party will be liable to the other for any delay or failure in performance arising directly out of war, sabotage, insurrection, riot, and any other act of civil disobedience, act of public enemy, fire, explosion, flood, storm, or other act of God or nature, or similar cause beyond its reasonable control, including shortage or unavailability of labor or materials. If, notwithstanding the foregoing limitations, Securitron has any liability to the purchaser, the purchaser agrees that the total liability to the purchaser for all losses, damages, and causes of action, whether in contract, equity, tort (including without limitation, negligence and gross negligence), or otherwise, will not exceed the amount the purchaser paid to Securitron for the products (including, without limitation, incidental or consequential damages, damages for lost profits or business interruption, and punitive damages).

NO THIRD PARTY LIABILITY If the purchaser uses the Securitron Products on behalf of others or provides to others any products referenced herein, the Securitron Parties shall have no liability to such persons whatsoever, and the purchaser agree to defend and indemnify the Securitron Parties from any and all claims and demands asserted against them, and from any legal fees, costs and other expenses that the Securitron Parties incur therewith.

Customers purchasing from Door Security Solutions Canada can find Canadian terms and conditions at www.assaabloydss.ca/terms



The ASSA ABLOY Group is the global leader in access solutions. Every day we help people feel safe, secure and experience a more open world.

SECURITRON
ASSA ABLOY

USA

800 626 7590 | f. 866 582 4641 | [securitron.com](https://www.securitron.com)
customerservice.securitron@assaabloy.com
techsupport.securitron@assaabloy.com
orders.securitron@assaabloy.com

CANADA

800 461 3007 | f. 800 461 8989 | [assaabloydss.ca](https://www.assaabloydss.ca)
sales.dss.ca@assaabloy.com
orders.dss.ca@assaabloy.com

Printed in the U.S.

Patent pending and/or patent www.assaabloydss.com/patents

Copyright © 2021-2022, Hanchett Entry Systems, Inc., an ASSA ABLOY Group company. All rights reserved. Reproduction in whole or in part without the express written permission of Hanchett Entry Systems, Inc. is prohibited. SEC-098-0522