

Experience a safer and more open world

Electronic Security Hardware

HES | Securitron

2019 – 2020 Pricelist

US & Canada Effective date December 1, 2019



ASSA ABLOY
Opening Solutions

Experience a safer
and more open world

Electronic Security Hardware

HES | Securitron

.....

2019 – 2020 Pricelist

Table of Contents

Electric Strikes	
HES® 1006	2
HES 1500	4
HES 1600	5
HES 4500C	6
HES 5000, 5200	7
HES 7000	8
HES 7501	8
HES 8000, 8300	9
HES 8500	10
Securitron® UNL, MUNL	10
HES 9400, 9500, 9600, 9700, 9800	11
HES Folger Adam SB:310-1(X), 310-2	12
HES Folger Adam 310-2 3/4, 310-2 3/4 OB	13
HES Folger Adam 310-3-1	13
HES Folger Adam 310-4, 310-4 (S)	14
HES Folger Adam 310-4-X	15
HES Folger Adam 310-6-X	16
HES Folger Adam 310-1-X	18
HES Folger Adam 712, 712-75	19
HES Folger Adam 732, 732-75	19
HES Folger Adam SB710, SB710-75	20
HES Folger Adam SB730, SB730-75	20
HES Folger Adam 742-75	21
HES Folger Adam SB740-75	21
HES Electric Strike Accessories	22
Electromagnetic Locks	
Intelligent Magnalocks®	
Securitron M380E EcoMag	23
Securitron M680E EcoMag	23
Delayed Egress Magnalocks	
Securitron iMXDa	24
Durable Magnalocks	
Securitron M32	24
Securitron M62	25
Securitron M82	25
Securitron M32, M62, M82 Brackets	26
Securitron M32, M62, M82 Accessories	26
Securitron M38	27
Securitron M68	27
Securitron Universal Magnalock Accessories	27
Securitron DM62	28
Recessed Magnalocks	
Securitron M34R	28
Shear Aligning Magnalocks	
Securitron SAM, SAM2	29
Cabinet Locks	
HES 610	30
HES 660	30
HES K20	30
HES KP20	30
HES K100-622H Aperio® Cabinet Lock	31
HES K200 Wiegand Cabinet Lock	31
HES KS200 Wiegand Server Cabinet Lock	31
Securitron MCL	31
Securitron M32-SS	31
Specialty Locks	
Securitron GL1	32
Securitron MM15	32
Securitron M62FG-SASM	32
Keypads & Card Readers	
Stand Alone Keypads	
Securitron DK-12	33
Keypad Systems	
Securitron DK-16	33
Securitron DK-26	33
Wiegand Keypads	
Securitron DK-37	33
Securitron DK-38	33
Aperio Card Reader	
Securitron R100H	33
Push Buttons & Egress Devices	
Securitron XMS Exit Motion Sensor	34
Emergency Exit Buttons	
Securitron EEB	34
Push Buttons	
Securitron PB	34
Securitron PB2	35
Securitron PB3	35
Securitron PB4L	36
Securitron PB5	36
Securitron MK Mortise Key Switch	36
Securitron KP-1 Tubular Key Switch	37
Securitron WSS Wave Switch	37
Securitron SP-1 Capacitive Button	37
Egress Bars	
Securitron DSB	38
Securitron TSB	38
Securitron EMB	39
Egress Handles	
Securitron TSH	39
Securitron EMH	39
Power	
Securitron BPS Linear Power Supplies	40
Securitron AQL Series Power Supplies	41
Securitron AQ Series Power Supplies	42
Securitron EcoPower®	43
Securitron BPSS Solar Power Supplies	43
Securitron AQE Single-Port PoE	43
Securitron AQE Multi-Port PoE	44
Securitron PSP Plug-In Power Supplies	44
Other Power Products	44
Power Transfers	
Securitron ICPT Inductive Coupling Power Transfer	45
Securitron CEPT Concealed Electrical Power Transfers	45
Securitron SEPT Square-Cut Electrical Power Transfers	45
Securitron EPT Electrical Power Transfers	46
Securitron EH Electric Hinges	46
Securitron TSB Door Cords	46
Accessories	
Securitron TM-2, TM-9, DT-7 & PZ1 Timers & Alarms	47
Securitron BA-DPA Door Prop Alarm Monitoring	47
Securitron DPS Door Position Switches	47
Securitron MSS Magnetic Switch/High Security	48
Securitron LM Latch Monitoring	48
Securitron RLP, RB-4 Relay Logic Packs & Boards	48
Terms & Conditions Warranty	
Terms & Conditions, Warranties	49

Electric Strikes

HES 1006CLB Complete Pacs for Latchbolt Locks

MODEL	DESCRIPTION	630
1006CLB		\$617
1006CLB-F	Fail Safe	\$617
1006CLB-LBM		\$732
1006CLB-F-LBM	Fail Safe	\$732
1006CLB-LBSM		\$742
1006CLB-F-LBSM	Fail Safe	\$742



HES 1006CDB Complete Pacs for Locks with Deadbolts

MODEL	DESCRIPTION	630
1006CDB		\$641
1006CDB-F	Fail Safe	\$641

HES 1006CAS Complete Pacs for Locks with Deadbolts

MODEL	DESCRIPTION	630
1006CAS		\$641
1006CAS-F	Fail Safe	\$641
1006CAS-2		\$667
1006CAS-2-F	Fail Safe	\$667

HES 1006CS Complete Pacs for Latchbolts & Deadbolts

MODEL	DESCRIPTION	630
1006CS		\$678
1006CS-F	Fail Safe	\$678

HES 1006 Electric Strike Bodies

MODEL	DESCRIPTION	630	605	606	612	613	629	BLK
1006		\$580	\$670	\$656	\$656	\$628	\$670	\$601
1006-F	Fail Safe	\$580	\$670	\$656	\$656	\$628	\$670	\$601
1006-F-LBM	Fail Safe	\$695	\$785	\$772	\$772	\$743	\$785	\$716
1006-F-LBSM	Fail Safe	\$705	\$796	\$782	\$782	\$754	\$796	\$727
1006-LBM		\$695	\$785	\$772	\$772	\$743	\$785	\$716
1006-LBSM		\$705	\$796	\$782	\$782	\$754	\$796	\$727

Faceplates

MODEL	DESCRIPTION	630	605	606	612	613	629	BLK
LB	Kit includes J, KM and KD faceplates	\$37						
DB	Kit includes faceplates and brackets to make N and H series options	\$61						
DB2	Kit includes faceplates and brackets to make N-2 and H-2 series options	\$87						
E		\$55	\$107	\$95	\$95	\$76	\$95	\$76
R		\$55	\$107	\$95	\$95	\$76	\$95	\$76
Z		\$37	\$106	\$93	\$93	\$58	\$93	\$58
J-2		\$71	\$118	\$103	\$103	\$92	\$103	\$92
KM-2		\$71	\$118	\$103	\$103	\$92	\$103	\$92

Tier Two Faceplates

MODEL	630	605	606	612	613	629	BLK
HM	\$55	\$106	\$93	\$93	\$76	\$93	\$76
HTD	\$55	\$106	\$93	\$93	\$76	\$93	\$76
J	\$36	\$105	\$95	\$95	\$57	\$95	\$57
KD	\$36	\$105	\$95	\$95	\$57	\$95	\$57
KM	\$36	\$105	\$95	\$95	\$57	\$95	\$57
ND	\$55	\$106	\$93	\$93	\$76	\$93	\$76
NM	\$55	\$106	\$93	\$93	\$76	\$93	\$76

Accessories

ITEM	DESCRIPTION	PRICE
157	Torx screws	\$14
1000-102	Rain guard	\$35
1000-104	Lip extension trim adapter (BLK)	\$64
1000-110	Replacement strike plate	\$105
1000-130	KD filler plate	\$47
1006-103	Full keeper shims	\$12
1006-105	Trim enhancer (BLK)	\$33
1006-109	Trim adapter (BLK)	\$45

How to Order Specify quantity and the following information. Order related products separately.

SERIES	MODEL	FAIL SAFE/SECURE	FINISH*	OPTION(S)
1006	—	- F	- 630	- LBM
1006 Universal Electric Strike Faceplates ordered separately	CS** Complete Electric Strike; includes the HES SMART Pac® III and J, KD, KM, HM, and AD faceplates	F Fail Safe/Secure (blank) Fail Secure (standard)	605 Bright Brass 606 Satin Brass 612 Satin Bronze 613 Bronze Toned 629 Bright Stainless Steel 630 Satin Stainless Steel BLK Black	LBM Latchbolt Monitor LBSM Latchbolt Strike Monitor
	CLB Complete Electric Strike for latchbolt locks; includes the J, K, KD, and KM faceplates			
	CDB** Complete Electric Strike for Deadbolt Locks; includes the HM and AD faceplates			
	CAS Complete Electric Strike for Deadbolt Locks; includes the ND and NM faceplates			

**Complete Pacs are only available in the 630 finish. **Complete Pacs with deadbolts are not available with monitoring options.*

HES 1500C Complete Pacs for Latchbolt Locks

MODEL	DESCRIPTION	630	605	606	612	613E	629	BSP
1500C		\$555	\$655	\$640	\$640	\$612	\$645	\$612
1500C-LM	Lock monitors	\$660	\$760	\$745	\$745	\$717	\$750	\$717
1500C-DLM	Dual lock monitors	\$765	\$865	\$850	\$850	\$822	\$855	\$822
1500C-LMS	Lock monitors & strike monitors	\$670	\$770	\$755	\$755	\$727	\$760	\$727
1500C-DLMS	Dual lock monitors & strike monitors	\$775	\$875	\$860	\$860	\$832	\$865	\$832



HES 1500 Electric Strike Bodies

MODEL	DESCRIPTION	630	605	606	612	613E	629	BSP
1500		\$514	\$590	\$580	\$580	\$546	\$590	\$546
1500-LM	Lock monitor	\$619	\$695	\$685	\$685	\$651	\$695	\$651
1500-DLM	Dual lock monitors	\$724	\$800	\$790	\$790	\$756	\$800	\$756
1500-LMS	Lock monitor & strike monitor	\$629	\$705	\$695	\$695	\$661	\$705	\$661
1500-DLMS	Dual lock monitors & strike monitor	\$734	\$810	\$800	\$800	\$766	\$810	\$766

Faceplates

MODEL	DESCRIPTION	630	605	606	612	613E	629	BSP
1LB	Kit includes 1J, 1K, 1KD and 1KM faceplates	\$42	\$90	\$83	\$83	\$68	\$83	\$68
1LB-2	Kit includes 1J-2 & 1KM-2 faceplates	\$70	\$117	\$111	\$111	\$96	\$111	\$96

Accessories

ITEM	DESCRIPTION	PRICE
157	Torx screws	\$14
OPT-1SRK	Optional spring replacement kit	\$47
OPT-1LM	Optional kit includes single lock monitor	\$108
OPT-1DLM	Optional kit includes dual lock monitors	\$216
MOD-1SOL	Solenoid replacement module	\$295

MODEL	DESCRIPTION	630	605	606	612	613E	629	BSP
1500-104	Lip extension trim adapter (finish to match)	\$39	\$84	\$78	\$78	\$63	\$78	\$63
1500-106	4500 filler plates and trim enhancer kit (finish to match)	\$32	\$77	\$71	\$71	\$56	\$71	\$56

How to Order Specify quantity and the following information. Order related products separately.

SERIES	MODEL	FINISH	OPTION(S)*
1500	—	– 630	– LM
1500 Universal Electric Strike faceplate option kits ordered separately	C Complete Electric Strike; includes 1LB faceplate kit for latchbolts	605 Bright Brass 606 Satin Brass 612 Satin Bronze 613E Dark Oxidized Satin Bronze Powder 629 Bright Stainless Steel 630 Satin Stainless Steel BSP Black Suede Powder	LM Lock Monitor DLM Dual Lock Monitor LMS Lock Monitor and Strike Monitor DLMS Dual Lock Monitors and Strike Monitor

*LMS/DLMS factory installed only option.

HES 1600CLB Complete Pacs for Latchbolt Locks

MODEL	DESCRIPTION	630	605	606	612	613E	629	BSP
1600-CLB		\$555	\$655	\$640	\$640	\$612	\$645	\$612
1600-CLB-LM	Lock monitor	\$660	\$760	\$745	\$745	\$717	\$750	\$717
1600-CLB-DLM	Dual lock monitor	\$765	\$865	\$850	\$850	\$822	\$855	\$822
1600-CLB-LMS	Lock monitor & strike monitor	\$670	\$770	\$755	\$755	\$727	\$760	\$727
1600-CLB-DLMS	Dual lock monitors & strike monitor	\$775	\$875	\$860	\$860	\$832	\$865	\$832

HES 1600CDB Complete Pacs for Locks with Deadbolts

MODEL	DESCRIPTION	630	605	606	612	613E	629	BSP
1600-CDB		\$555	\$655	\$640	\$640	\$612	\$645	\$612
1600-CDB-LM	Lock monitor	\$660	\$760	\$745	\$745	\$717	\$750	\$717
1600-CDB-DLM	Dual lock monitors	\$765	\$865	\$850	\$850	\$822	\$855	\$822
1600-CDB-LMS	Lock monitor & strike monitor	\$670	\$770	\$755	\$755	\$727	\$760	\$727
1600-CDB-DLMS	Dual lock monitors & strike monitor	\$775	\$875	\$860	\$860	\$832	\$865	\$832

HES 1600CS Complete Pacs for Latchbolt Locks & Deadlocks

MODEL	DESCRIPTION	630	605	606	612	613E	629	BSP
1600-CS		\$615	\$771	\$798	\$798	\$663	\$781	\$663
1600-CS-LM	Lock monitor	\$720	\$876	\$903	\$903	\$768	\$886	\$768
1600-CS-DLM	Dual lock monitors	\$825	\$981	\$1008	\$1008	\$873	\$991	\$873
1600-CS-LMS	Lock monitor & strike monitor	\$730	\$886	\$913	\$913	\$778	\$896	\$778
1600-CS-DLMS	Dual lock monitors & strike monitor	\$835	\$991	\$1018	\$1018	\$883	\$1001	\$883

HES 1600 Electric Strike Bodies

MODEL	DESCRIPTION	630	605	606	612	613E	629	BSP
1600		\$514	\$590	\$580	\$580	\$546	\$590	\$546
1600-LM	Lock monitor	\$619	\$695	\$685	\$685	\$651	\$695	\$651
1600-DLM	Dual lock monitors	\$724	\$800	\$790	\$790	\$756	\$800	\$756
1600-LMS	Lock monitor & strike monitor	\$629	\$705	\$695	\$695	\$661	\$705	\$661
1600-DLMS	Dual lock monitors & strike monitor	\$734	\$810	\$800	\$800	\$766	\$810	\$766

Faceplates

MODEL	DESCRIPTION	630	605	606	612	613E	629	BSP
1LB	Kit includes 1J, 1K, 1KD and 1KM faceplates	\$42	\$90	\$83	\$83	\$68	\$83	\$68
1LB-2	Kit includes 1J-2 & 1KM-2 faceplates	\$70	\$117	\$111	\$111	\$96	\$111	\$96
1DB	Kit includes faceplates and brackets to make 1N, 1ND, 1NM or 1NTD options	\$42	\$90	\$83	\$83	\$68	\$83	\$68
1DB-2	Kit includes faceplates and brackets to make 1N-2 option	\$70	\$117	\$111	\$111	\$96	\$111	\$96

Accessories

ITEM	DESCRIPTION	PRICE
157	Torx screws	\$14
OPT-1SRK	Optional spring replacement kit	\$47
OPT-1LM	Optional kit includes single lock monitor	\$108
OPT-1DLM	Optional kit includes dual lock monitors	\$216
MOD-1SOL	Solenoid replacement module	\$295

MODEL	DESCRIPTION	630	605	606	612	613E	629	BSP
1600-104	Lip extension trim adapter (finish to match)	\$40	\$84	\$78	\$78	\$63	\$78	\$63
1600-106	1006 filler plate and trim enhancer kit (finish to match)	\$33	\$77	\$71	\$71	\$56	\$71	\$56

How to Order Specify quantity and the following information. Order related products separately.

SERIES	MODEL	FINISH	OPTION(S)*
1600	– CS	– 630	– LM
1600 Universal Electric Strike; Faceplate option kits ordered separately	CS Complete Electric Strike; includes 1LB faceplate kit for latchbolts and 1DB faceplate kit for deadbolts	605 Bright Brass	LM Lock Monitor
	CLB Complete Electric Strike for Latchbolt Locks; includes 1LB faceplate kit for latchbolts	606 Satin Brass	DLM Dual Lock Monitor
	CDB Complete Electric Strike for Deadbolt Locks; includes 1DB faceplate kit for deadbolts	612 Satin Bronze	LMS Lock Monitor and Strike Monitor
		613E Dark Oxidized Satin Bronze Powder	DLMS Dual Lock Monitors and Strike Monitor
		629 Bright Stainless Steel	
		630 Satin Stainless Steel	
		BSP Black Suede Powder	

*LMS/DLMS factory installed only option.



HES 4500C Complete Pacs for Latchbolt Locks

MODEL	DESCRIPTION	630	605	606	612	613	629
4500C		\$627	\$717	\$704	\$704	\$670	\$717
4500C-LBM	Latchbolt monitor	\$742	\$833	\$819	\$819	\$785	\$833
4500C-LBSM	Latchbolt strike monitor	\$753	\$843	\$830	\$830	\$796	\$843



Accessories

ITEM	DESCRIPTION	PRICE
157	Torx screws	\$14
4500-105	Trim enhancer (BLK)	\$33
4500-110	Replacement strike plate	\$100
4500-131	Filler block	\$42
4501-1/2	1/2" stackable lip extension	\$56
4501-1	1" stackable lip extension	\$63

How to Order *Specify quantity and the following information. Order related products separately.*

SERIES	FINISH*	OPTION(S)
4500C	- 630	- LBM
4500C Complete Electric Strike; includes faceplates for cylindrical and mortise locks	605 Bright Brass	LBM Latchbolt Monitor
	606 Satin Brass	LBSM Latchbolt Strike Monitor
	612 Satin Bronze	
	613 Bronze Toned	
	629 Bright Stainless Steel	
	630 Satin Stainless Steel	

HES 5000C, 5200C Complete Pacs for Latchbolt Locks

MODEL	DESCRIPTION	630
5000C		\$208
5000C-LBM	Latchbolt monitor	\$286
5200C		\$213
5200C-LBM	Latchbolt monitor	\$292
5200C-LBSM	Latchbolt strike monitor	\$302



HES 5000, 5200 Electric Strike Bodies

MODEL	DESCRIPTION	630
5000		\$183
5000-LBM	Latchbolt monitor	\$261
5200		\$188
5200-LBM	Latchbolt monitor	\$266
5200-LBSM	Latchbolt strike monitor	\$277

Faceplates

MODEL	DESCRIPTION	630	605	606	612	613	629	BLK
501	For use with cylindrical locksets in NSI metal jambs	\$20	\$68	\$50	\$50	\$42	\$68	\$42
501A	For use with cylindrical locksets or spring latches in aluminum frames. Includes universal mounting tabs.	\$25	\$74	\$53	\$53	\$46	\$74	\$46
502	For use with cylindrical locksets or spring latches in aluminum frames. Includes universal mounting tabs	\$44	\$89	\$73	\$73	\$60	\$89	\$60
503	For use with cylindrical locksets or spring latches in aluminum frames. Includes universal mounting tabs	\$44	\$89	\$73	\$73	\$60	\$89	\$60
504	For use with cylindrical locksets. Four-point mounting for wood installations.	\$44	\$89	\$73	\$73	\$60	\$89	\$60

Accessories

ITEM	DESCRIPTION	PRICE
157	Torx screws	\$14
5000-105	Trim enhancer (goof plate)	\$32
5104-1/2	1/2" stackable lip extension	\$54
5104-1	1" stackable lip extension	\$61
5104-1-1/4	1-1/4" stackable lip extension	\$63
5200 105	Trim enhancer (goof plate)	\$32
5200-500	Filler block	\$57
5204-1/2	1/2" stackable lip extension	\$54
5204-1	1" stackable lip extension	\$61
5204-1-1/4	1-1/4" stackable lip extension	\$63

How to Order Specify quantity and the following information. Order related products separately.

SERIES	MODEL	FINISH	OPTION(S)*
5000, 5200	–	– 630	– LM
5000, 5200	C* Complete Electric Strike; includes the 501 and 501A faceplates	605 Bright Brass 606 Satin Brass 612 Satin Bronze 613 Bronze Powder 629 Bright Stainless Steel 630 Satin Stainless Steel BLK Black	LBM Latchbolt Monitor LBSM** Latchbolt Strike Monitor

*Complete Pacs are only available in the 630 finish. **LBSM only available with 5200.

HES 7000C Complete Pacs for Latchbolt Locks

MODEL	DESCRIPTION	630
7000C		\$324
7000C-LBM	Latchbolt monitor	\$442



HES 7000 Electric Strike Bodies

MODEL	DESCRIPTION	630
7000		\$263
7000-LBM	Latchbolt monitor	\$381

Faceplates

MODEL	DESCRIPTION	630	605	606	612	613E	629	BLK
791	Cylindrical lock faceplate	\$61	\$109	\$93	\$93	\$80	\$109	\$80
792	Cylindrical lock faceplate	\$61	\$109	\$93	\$93	\$80	\$109	\$80
783S	Rim exit device faceplate	\$157				\$224		
786S	Rim exit device faceplate	\$175				\$254		
789S	Rim exit device faceplate	\$175				\$254		

Accessories

ITEM	DESCRIPTION	PRICE
157	Torx screws	\$14
7000-104	Lip extension trim adapter (791 & 792 options only)	\$32
7000-105	Trim enhancer (goof plate) (791 & 792 options only)	\$32
7000-106	Keeper pocket adapter (783S & 789S options only)	\$31
7000-107	Full keeper shim pack	\$17
7000-108	Spacer plate (783S & 789S options, black finish only)	\$34
7000-110	Replacement strike plate (701 option only)	\$106
SMB	Surface mounting box	\$215

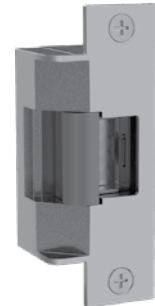
How to Order Specify quantity and the following information. Order related products separately.

SERIES	MODEL	FINISH*	OPTION(S)
7000	—	— 630	— LBM
		791 and 792 Options	783S, 786S, 789S Options
7000	Universal Electric Strike; faceplates ordered separately	C* Complete Electric Strike; includes the 791 and 792 faceplates (blank) Strike Body Only	605 Bright Brass 606 Satin Brass 612 Satin Bronze 613E Dark Oxidized Satin Bronze Powder 629 Bright Stainless Steel 630 Satin Stainless Steel BLK Black
			613E Dark Oxidized Satin Bronze Powder 630 Satin Stainless Steel LBM Latchbolt Monitor

*Complete Pacs are only available in 630 finish.

HES 7501 Complete Electric Strike Kits

MODEL	DESCRIPTION	630	605	606	612	613	629
7501		\$624	\$713	\$699	\$699	\$683	\$713
7501-LBM	Latchbolt monitor	\$737	\$826	\$813	\$813	\$796	\$826



How to Order Specify quantity and the following information. Order related products separately.

SERIES	FINISH*	OPTION(S)
7501	— 630	— LBM
7501	Universal Electric Strike; includes faceplate for cylindrical locksets	605 Bright Brass 606 Satin Brass 612 Satin Bronze 613 Bronze Toned 629 Bright Stainless Steel 630 Satin Stainless Steel
		LBM Latchbolt Monitor

HES 8000C, 8300C Complete Pac for Latchbolt Locks

MODEL	DESCRIPTION	630
8000C		\$248
8000C-LBM	Latchbolt monitor	\$362
8300C		\$559
8300C-LBM	Latchbolt monitor	\$674



HES 8000, 8300 Electric Strike Bodies

MODEL	DESCRIPTION	630
8000		\$217
8000-LBM	Latchbolt monitor	\$331
8300		\$528
8300-LBM	Latchbolt monitor	\$643

Faceplates

MODEL	630	605	606	612	613	629	BLK
801	\$31	\$80	\$64	\$64	\$52	\$80	\$52
801A	\$36	\$85	\$69	\$69	\$57	\$85	\$57
801E	\$31	\$80	\$64	\$64	\$52	\$80	\$52
802	\$49	\$99	\$82	\$82	\$70	\$99	\$78
803	\$49	\$99	\$82	\$82	\$70	\$99	\$70
805	\$49	\$99	\$82	\$82	\$70	\$99	\$70

How to Order Specify quantity and the following information. Order related products separately.

SERIES	MODEL	FINISH*	OPTION(S)
8000	—	– 630	– LBM
8000, 8300	Universal Electric Strike; faceplates ordered separately C Complete Electric Strike; includes the 801 and 801A faceplates (blank) Strike Body Only	605 Bright Brass 606 Satin Brass 612 Satin Bronze 613 Bronze Toned 629 Bright Stainless Steel 630 Satin Stainless Steel BLK Black	LBM Latchbolt Monitor

*Complete Pacs are only available in 630 finish.

HES 8500 Electric Strike Bodies

MODEL	DESCRIPTION	630	605	606	612	613	629
8500		\$528	\$588	\$578	\$578	\$578	\$588
8500-LBM	Latchbolt monitor	\$643	\$703	\$693	\$693	\$693	\$703
8500-LBSM	Latchbolt strike monitor	\$653	\$714	\$703	\$703	\$703	\$714



Faceplates

MODEL	630	605	606	612	613	629
851M	\$40	\$90	\$73	\$73	\$63	\$90
852K	\$40	\$90	\$73	\$73	\$63	\$90
852L	\$40	\$90	\$73	\$73	\$63	\$90
852M	\$40	\$90	\$73	\$73	\$63	\$90

How to Order *Specify quantity and the following information. Order related products separately.*

SERIES	FINISH*	OPTION(S)
8500	- 630	- LBM
8500 Universal Electric Strike; faceplates ordered separately	605 Bright Brass 606 Satin Brass 612 Satin Bronze 613 Bronze Toned 629 Bright Stainless Steel 630 Satin Stainless Steel	LBM Latchbolt Monitor LBSM Latchbolt Strike Monitor

Securitron UNL, MUNL Complete Pacs for Latchbolt Locks

MODEL	626	613
UNL-12	\$499	\$556
UNL-24	\$497	\$556
MUNL-12	\$695	\$747
MUNL-24	\$695	\$747



Accessories

ITEM	DESCRIPTION	PRICE
FSUNL-12	Fail Safe/Fail Secure UnLatch Module, 12 VDC	\$123
FSUNL-24	Fail Safe/Fail Secure UnLatch Module, 24 VDC	\$123

How to Order *Specify quantity and the following information. Order related products separately.*

SERIES	FAIL SAFE/SECURE	VOLTAGE	FINISH
MUNL	—	- 24	- 10B
UNL Cylindrical	(blank) Fail Secure (Standard)	12 12 Volt	(blank) US26D/626—Stainless Steel
MUNL Mortise	Note: FSUNL for field-selectable fail safe operation ordered separately	24 24 Volt	10B US10B/613—Oil Rubbed Bronze US3 US03/605—Bright Brass

HES 9400, 9500, 9600, 9700, 9800 Surface Mounted Electric Strikes for Rim Exit Devices

MODEL	DESCRIPTION	630	605	606	612	613	613E	628E	629	BSP
9400		\$526	\$612	\$599	\$599	\$599	\$558		\$612	\$558
9400-LBM	Latchbolt monitor	\$636	\$722	\$709	\$709	\$709	\$668		\$722	\$668
9400-LBSM	Latchbolt strike monitor	\$646	\$732	\$719	\$719	\$719	\$678		\$732	\$678
9500		\$625	\$711	\$698	\$698	\$698	\$657		\$711	\$657
9500-LBM	Latchbolt monitor	\$735	\$821	\$808	\$808	\$808	\$767		\$821	\$767
9500-LBSM	Latchbolt strike monitor	\$745	\$831	\$818	\$818	\$818	\$777		\$831	\$777
9600		\$526	\$612	\$599	\$599	\$599	\$558		\$612	\$558
9600-LBM	Latchbolt monitor	\$636	\$722	\$709	\$709	\$709	\$668		\$722	\$668
9600-LBSM	Latchbolt strike monitor	\$646	\$732	\$719	\$719	\$719	\$678		\$732	\$678
9700		\$625	\$711	\$698	\$698	\$698	\$657		\$711	\$657
9700-LBM	Latchbolt monitor	\$735	\$821	\$808	\$808	\$808	\$767		\$821	\$767
9700-LBSM	Latchbolt strike monitor	\$745	\$831	\$818	\$818	\$818	\$777		\$831	\$777
9800		\$625	\$711	\$698			\$657	\$657	\$711	\$657
9800-LBM	Coming soon									
9800-LBSM	Coming soon									



Accessories

ITEM	DESCRIPTION	PRICE
9000-MTK	Metal template installation kit	\$79
SMB	Surface mounting box	\$215

Spacer Plates/ Brackets

MODEL	DESCRIPTION	630	613E	628	628E	BSP
9000-108	1/8" Spacer plate	\$33	\$46		\$45	\$46
9000-116	1/16" Spacer plate	\$33	\$46		\$45	\$46
9000-ASB	Aluminum spacer bracket		\$108	\$99		\$108

How to Order Specify quantity and the following information. Order related products separately.

SERIES	FINISH	OPTION(S)
9600	- 630	- LBM
9400 Surface Mounted Electric Strike for 1/2" Pullman Exit Device; no faceplates required	605 Bright Brass 606 Satin Brass	LBM Latchbolt Monitor LBSM Latchbolt Strike Monitor
9500 Surface Mounted Electric Strike for 3/4" Pullman, fire rated; no faceplates required	612 Satin Bronze 613 Bronze Toned	
9600 Surface Mounted Electric Strike for 3/4" Pullman Rim Exit Devices, non-fire rated; no faceplates required	613E Dark Oxidized Satin Bronze 629 Bright Stainless Steel	
9700 Surface Mounted Electric Strike for Corbin Russwin SecureBolt® and Yale SquareBolt® Rim Exit Devices; no faceplates required	628E Satin Aluminum Powder 630 Satin Stainless Steel	
9800 Surface Mounted Electric Strike for Adams Rite® Starwheel and Interlocking Rim Exit Devices; no faceplates required	BSP Black Suede Powder	

HES Folger Adam SB:310-1(1/2) Electric Strike Bodies

ITEM	DESCRIPTION	PRICE
310-1(1/2)-12D		\$555
310-1(1/2)-24D		\$555
310-1(1/2)-F-12D	Fail safe	\$555
310-1(1/2)-F-24D	Fail safe	\$555
310-1(1/2)-12D-LCBMA		\$696
310-1(1/2)-24D-LCBMA		\$696
310-1(1/2)-F-12D-LCBMA	Fail safe	\$696
310-1(1/2)-F-24D-LCBMA	Fail safe	\$696



HES Folger Adam SB:310-1(3/4) Electric Strike Bodies

ITEM	DESCRIPTION	PRICE
310-1(3/4)-12D		\$555
310-1(3/4)-24D		\$555
310-1(3/4)-F-12D	Fail safe	\$555
310-1(3/4)-F-24D	Fail safe	\$555
310-1(3/4)-12D-LCBMA		\$696
310-1(3/4)-24D-LCBMA		\$696
310-1(3/4)-F-12D-LCBMA	Fail safe	\$696
310-1(3/4)-F-24D-LCBMA	Fail safe	\$696

HES Folger Adam SB:310-1(1) Electric Strike Bodies

ITEM	DESCRIPTION	PRICE
310-1(1)-12D		\$555
310-1(1)-24D		\$555
310-1(1)-F-12D	Fail safe	\$555
310-1(1)-F-24D	Fail safe	\$555
310-1(1)-12D-LCBMA		\$696
310-1(1)-24D-LCBMA		\$696
310-1(1)-F-12D-LCBMA	Fail safe	\$696
310-1(1)-F-24D-LCBMA	Fail safe	\$696

HES Folger Adam SB:310-1(PK) Electric Strike Bodies

ITEM	DESCRIPTION	PRICE
310-1(PK)-12D		\$555
310-1(PK)-24D		\$555
310-1(PK)-F-12D	Fail safe	\$555
310-1(PK)-F-24D	Fail safe	\$555
310-1(PK)-12D-LCBMA		\$696
310-1(PK)-24D-LCBMA		\$696
310-1(PK)-F-12D-LCBMA	Fail safe	\$696
310-1(PK)-F-24D-LCBMA	Fail safe	\$696

HES Folger Adam SB:310-1(SK) Electric Strike Bodies

ITEM	DESCRIPTION	PRICE
310-1(SK)-12D		\$571
310-1(SK)-24D		\$571
310-1(SK)-F-12D	Fail safe	\$571
310-1(SK)-F-24D	Fail safe	\$571
310-1(SK)-12D-LCBMA		\$711
310-1(SK)-24D-LCBMA		\$711
310-1(SK)-F-12D-LCBMA	Fail safe	\$711
310-1(SK)-F-24D-LCBMA	Fail safe	\$711

How to Order *Specify quantity and the following information. Order related products separately.*

PREFIX	SERIES	KEEPER STYLE	FAIL SAFE/SECURE	VOLTAGE	OPTION(S)
SB	310-1	(3/4)	- F	- 24D	- LCBMA
Strike BODY ONLY					
SB Strike Body	310-1 Strike Body Only	(1/2) 1/2" keeper (3/4) 3/4" keeper (1) 1" keeper (PK) For use with 3/4" Pullman style latchbolts (SK) For use with Squarebolt® style rim exit devices	(blank) Fail Secure (Standard) F Fail Safe	12D 12 Volt 24D 24 Volt	LCBMA Latchbolt & locking cam monitor with auxiliary switch

HES Folger Adam 310-2 Complete Pacs for Latchbolt Locks

MODEL	DESCRIPTION	630	605	606	612	613	629
310-2-12D		\$708	\$815	\$783	\$783	\$746	\$815
310-2-24D		\$708	\$815	\$783	\$783	\$746	\$815
310-2-F-12D	Fail safe	\$708	\$815	\$783	\$783	\$746	\$815
310-2-F-24D	Fail safe	\$708	\$815	\$783	\$783	\$746	\$815
310-2-12D-LCBMA		\$848	\$955	\$922	\$922	\$887	\$955
310-2-24D-LCBMA		\$848	\$955	\$922	\$922	\$887	\$955
310-2-F-12D-LCBMA	Fail safe	\$848	\$955	\$922	\$922	\$887	\$955
310-2-F-24D-LCBMA	Fail safe	\$848	\$955	\$922	\$922	\$887	\$955



Faceplates

MODEL	630	605	606	612	613	629
FP-310-2	\$153	\$260	\$226	\$226	\$191	\$260

HES Folger Adam 310-2 3/4 Complete Pacs for Latchbolt Locks

MODEL	DESCRIPTION	630	605	606	612	613	629
310-2 3/4-12D		\$808	\$912	\$881	\$881	\$846	\$910
310-2 3/4-24D		\$808	\$912	\$881	\$881	\$846	\$910
310-2 3/4-F-12D	Fail safe	\$808	\$912	\$881	\$881	\$846	\$910
310-2 3/4-F-24D	Fail safe	\$808	\$912	\$881	\$881	\$846	\$910
310-2 3/4-12D-LCBMA		\$947	\$1052	\$1021	\$1021	\$985	\$1050
310-2 3/4-24D-LCBMA		\$947	\$1052	\$1021	\$1021	\$985	\$1050
310-2 3/4-F-12D-LCBMA	Fail safe	\$947	\$1052	\$1021	\$1021	\$985	\$1050
310-2 3/4-F-24D-LCBMA	Fail safe	\$947	\$1052	\$1021	\$1021	\$985	\$1050

HES Folger Adam 310-2 3/4OB Complete Pacs for Latchbolt Locks

MODEL	DESCRIPTION	630	605	606	612	613	629
310-2 3/4OB-12D		\$999	\$1105	\$1073	\$1073	\$1041	\$1105
310-2 3/4OB-24D		\$999	\$1105	\$1073	\$1073	\$1041	\$1105
310-2 3/4OB-F-12D	Fail safe	\$999	\$1105	\$1073	\$1073	\$1041	\$1105
310-2 3/4OB-F-24D	Fail safe	\$999	\$1105	\$1073	\$1073	\$1041	\$1105

Faceplates

MODEL	630	605	606	612	613	629
FP-310-2-34OB	\$442	\$548	\$518	\$518	\$485	\$548

Faceplates

MODEL	630	605	606	612	613	629
FP-310-2-34	\$252	\$356	\$326	\$326	\$290	\$354

HES Folger Adam 310-3-1 Complete Pacs for Latchbolt Locks & Deadbolts

MODEL	DESCRIPTION	630	605	606	612	613	629
310-3-1-12D		\$1012	\$1068	\$1042	\$1042	\$1007	\$1068
310-3-1-24D		\$1012	\$1068	\$1042	\$1042	\$1007	\$1068
310-3-1-F-12D	Fail safe	\$1012	\$1068	\$1042	\$1042	\$1007	\$1068
310-3-1-F-24D	Fail safe	\$1012	\$1068	\$1042	\$1042	\$1007	\$1068
310-3-1-12D-LCBMA		\$1152	\$1207	\$1181	\$1181	\$1147	\$1207
310-3-1-24D-LCBMA		\$1152	\$1207	\$1181	\$1181	\$1147	\$1207
310-3-1-F-12D-LCBMA	Fail safe	\$1152	\$1207	\$1181	\$1181	\$1147	\$1207
310-3-1-F-24D-LCBMA	Fail safe	\$1152	\$1207	\$1181	\$1181	\$1147	\$1207

Faceplates

MODEL	630	605	606	612	613	629
FP-310-3-1	\$457	\$512	\$486	\$486	\$452	\$512

How to Order Specify quantity and the following information. Order related products separately.

SERIES	FAIL SAFE/SECURE	VOLTAGE	FINISH	OPTION(S)
310-2	- F	- 24D	- 613	- LCBMA
COMPLETE PACS				
310-2 1/2" keeper standard; for up to a 5/8" throw latchbolt	(blank) Fail Secure (Standard)	12D 12 Volt 24D 24 Volt	605 Bright Brass 606 Satin Brass 612 Satin Bronze 613 Bronze Toned 629 Bright Stainless Steel 630 Satin Stainless Steel	LCBMA* Latchbolt & locking cam monitor with auxiliary switch
310-2 3/4 3/4" keeper standard; for up to a 3/4" throw latchbolt without deadbolt	F Fail Safe			
310-2 3/4OB* 3/4" keeper standard; for a pair of doors without a door coordinator				
310-3-1 1" keeper standard; for up to a 3/4" throw latchbolt and a 1" deadbolt				

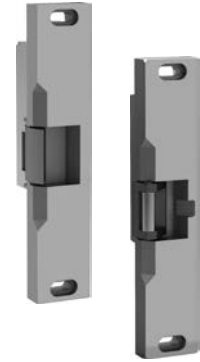
How to Order

PREFIX	SERIES	FINISH
FP	- 310-2 3/4OB	- 630
FACEPLATE ONLY		
FP Faceplate	310-2 1/2" keeper standard; for up to a 5/8" throw latchbolt 310-2 3/4 3/4" keeper standard; for up to a 3/4" throw latchbolt without deadbolt 310-2 3/4OB 3/4" keeper standard; for a pair of doors without a door coordinator 310-3-1 1" keeper standard; for up to a 3/4" throw latchbolt and a 1" deadbolt	605 Bright Brass 606 Satin Brass 612 Satin Bronze 613 Bronze Toned 629 Bright Stainless Steel 630 Satin Stainless Steel

*LCBMA not available with 310-2 3/4OB.

HES Folger Adam 310-4 Complete Pacs for Pullman Rim Exit Devices

MODEL	DESCRIPTION	630	605	606	612	613	629
310-4-12D		\$740	\$850	\$818	\$818	\$781	\$850
310-4-24D		\$740	\$850	\$818	\$818	\$781	\$850
310-4-F-12D	Fail safe	\$740	\$850	\$818	\$818	\$781	\$850
310-4-F-24D	Fail safe	\$740	\$850	\$818	\$818	\$781	\$850
310-4-12D-LCBMA		\$879	\$989	\$958	\$958	\$920	\$989
310-4-24D-LCBMA		\$879	\$989	\$958	\$958	\$920	\$989
310-4-F-12D-LCBMA	Fail safe	\$879	\$989	\$958	\$958	\$920	\$989
310-4-F-24D-LCBMA	Fail safe	\$879	\$989	\$958	\$958	\$920	\$989



Faceplates

MODEL	630	605	606	612	613	629
FP-310-4	\$184	\$294	\$263	\$263	\$224	\$294

HES Folger Adam 310-4(S) Complete Pacs for Squarebolt® Rim Exit Device

MODEL	DESCRIPTION	630	605	606	612	613	629
310-4(S)-12D		\$786	\$892	\$861	\$861	\$825	\$892
310-4(S)-24D		\$786	\$892	\$861	\$861	\$825	\$892
310-4(S)-F-12D	Fail safe	\$786	\$892	\$861	\$861	\$825	\$892
310-4(S)-F-24D	Fail safe	\$786	\$892	\$861	\$861	\$825	\$892
310-4(S)-12D-LCBMA		\$925	\$1031	\$1001	\$1001	\$964	\$1031
310-4(S)-24D-LCBMA		\$925	\$1031	\$1001	\$1001	\$964	\$1031
310-4(S)-F-12D-LCBMA	Fail safe	\$925	\$1031	\$1001	\$1001	\$964	\$1031
310-4(S)-F-24D-LCBMA	Fail safe	\$925	\$1031	\$1001	\$1001	\$964	\$1031

Faceplates

MODEL	630	605	606	612	613	629
FP-310-4-SK	\$215	\$321	\$290	\$290	\$254	\$321

How to Order *Specify quantity and the following information. Order related products separately.*

SERIES	FAIL SAFE/SECURE	VOLTAGE	FINISH	OPTION(S)
310-4 (S)	- F	- 12D	- 605	- LCBMA
COMPLETE PACS				
310-4 PK keeper standard; for use with 3/4" Pullman style latchbolts	(blank) Fail Secure (Standard) F Fail Safe	12D 12 Volt 24D 24 Volt	605 Bright Brass 606 Satin Brass	LCBMA* Latchbolt & locking cam monitor with auxiliary switch
310-4(S) SK keeper standard; for use with Squarebolt® style rim exit devices			612 Satin Bronze 613 Bronze Toned 629 Bright Stainless Steel 630 Satin Stainless Steel	

How to Order *Specify quantity and the following information. Order related products separately.*

PREFIX	SERIES	KEEPER STYLE	FINISH
FP	- 310-4	(SK)	- 630
FACEPIATES ONLY			
FP Faceplate	310-4 PK keeper standard; for use with 3/4" Pullman style latchbolts 310-4(S) SK keeper standard; for use with Squarebolt® style rim exit devices	(SK) For use with Squarebolt® style rim exit devices	605 Bright Brass 606 Satin Brass 612 Satin Bronze 613 Bronze Toned 629 Bright Stainless Steel 630 Satin Stainless Steel

HES Folger Adam 310-4-1 Complete Pacs for Surface Vertical Rods

MODEL	DESCRIPTION	630	605	606	612	613	629
310-4-1-12D		\$1385	\$1429	\$1393	\$1393	\$1385	\$1429
310-4-1-24D		\$1385	\$1429	\$1393	\$1393	\$1385	\$1429
310-4-1-F-12D	Fail safe	\$1385	\$1429	\$1393	\$1393	\$1385	\$1429
310-4-1-F-24D	Fail safe	\$1385	\$1429	\$1393	\$1393	\$1385	\$1429
310-4-1-12D-LCBMA		\$1634	\$1679	\$1641	\$1641	\$1634	\$1679
310-4-1-24D-LCBMA		\$1634	\$1679	\$1641	\$1641	\$1634	\$1679
310-4-1-F-12D-LCBMA	Fail safe	\$1634	\$1679	\$1641	\$1641	\$1634	\$1679
310-4-1-F-24D-LCBMA	Fail safe	\$1634	\$1679	\$1641	\$1641	\$1634	\$1679



INSTALLATION NOTE: Double-door models are available with four different center-to-center dimensions between latchbolt keepers. Keepers are wide enough to compensate for vertical rod exit bolts, which may be as much as 3/8" (10 mm) off center-to-center dimension, either way. When using an electric strike in conjunction with a vertical rod exit device, it is necessary that:

1. The bottom rod of the exit device be removed or made inoperative
2. The latchbolt of the exit device be the "Pullman" or beveled type
3. The latchbolt be free-latching and remain projected while the door is open. Mechanisms that hold the latchbolt retracted while the door is open, and automatically release it when the door is closed, must be removed or made inoperative.

Faceplates

MODEL	630	605	606	612	613
FP-310-4-1	\$383	\$428	\$390	\$390	\$383

HES Folger Adam 310-4-2 Complete Pacs for Surface Vertical Rods

MODEL	DESCRIPTION	630	605	606	612	613	629
310-4-2-12D		\$1385	\$1429	\$1393	\$1393	\$1385	\$1429
310-4-2-24D		\$1385	\$1429	\$1393	\$1393	\$1385	\$1429
310-4-2-F-12D	Fail safe	\$1385	\$1429	\$1393	\$1393	\$1385	\$1429
310-4-2-F-24D	Fail safe	\$1385	\$1429	\$1393	\$1393	\$1385	\$1429
310-4-2-12D-LCBMA		\$1634	\$1679	\$1641	\$1641	\$1634	\$1679
310-4-2-24D-LCBMA		\$1634	\$1679	\$1641	\$1641	\$1634	\$1679
310-4-2-F-12D-LCBMA	Fail safe	\$1634	\$1679	\$1641	\$1641	\$1634	\$1679
310-4-2-F-24D-LCBMA	Fail safe	\$1634	\$1679	\$1641	\$1641	\$1634	\$1679

Faceplates

MODEL	630	605	606	612	613	629
FP-310-4-2	\$383	\$428	\$390	\$390	\$383	\$428

HES Folger Adam 310-4-3 Complete Pacs for Surface Vertical Rods

MODEL	DESCRIPTION	630	605	606	612	613	629
310-4-3-12D		\$1450	\$1497	\$1462	\$1462	\$1450	\$1497
310-4-3-24D		\$1450	\$1497	\$1462	\$1462	\$1450	\$1497
310-4-3-F-12D	Fail safe	\$1450	\$1497	\$1462	\$1462	\$1450	\$1497
310-4-3-F-24D	Fail safe	\$1450	\$1497	\$1462	\$1462	\$1450	\$1497
310-4-3-12D-LCBMA		\$1699	\$1745	\$1710	\$1710	\$1699	\$1745
310-4-3-24D-LCBMA		\$1699	\$1745	\$1710	\$1710	\$1699	\$1745
310-4-3-F-12D-LCBMA	Fail safe	\$1699	\$1745	\$1710	\$1710	\$1699	\$1745
310-4-3-F-24D-LCBMA	Fail safe	\$1699	\$1745	\$1710	\$1710	\$1699	\$1745

Faceplates

MODEL	630	605	606	612	613
FP-310-4-3	\$448	\$494	\$459	\$459	\$448

HES Folger Adam 310-4-30 Complete Pacs for Surface Vertical Rods

MODEL	DESCRIPTION	630	605	606	612	613	629
310-4-30-12D		\$1450	\$1497	\$1462	\$1462	\$1450	\$1497
310-4-30-24D		\$1450	\$1497	\$1462	\$1462	\$1450	\$1497
310-4-30-F-12D	Fail safe	\$1450	\$1497	\$1462	\$1462	\$1450	\$1497
310-4-30-F-24D	Fail safe	\$1450	\$1497	\$1462	\$1462	\$1450	\$1497
310-4-30-12D-LCBMA		\$1699	\$1745	\$1710	\$1710	\$1699	\$1745
310-4-30-24D-LCBMA		\$1699	\$1745	\$1710	\$1710	\$1699	\$1745
310-4-30-F-12D-LCBMA	Fail safe	\$1699	\$1745	\$1710	\$1710	\$1699	\$1745
310-4-30-F-24D-LCBMA	Fail safe	\$1699	\$1745	\$1710	\$1710	\$1699	\$1745

Faceplates

MODEL	630	605	606	612	613
FP-310-4-30	\$448	\$494	\$459	\$459	\$448

How to Orders on next page

How to Order *Specify quantity and the following information. Order related products separately.*

SERIES	KEEPER STYLE	FAIL SAFE/SECURE	VOLTAGE	FINISH	OPTION(S)
310-4-X	(PK)	F	- 24D	- 612	- LCBMA
COMPLETE PACS					
1 For use with vertical rod spacing between 4" and 4-3/4"	(PK) For use with 3/4" Pullman style latchbolts	(blank) Fail Secure (Standard) F Fail Safe	12D 12 Volt	605 Bright Brass	LCBMA Latchbolt & locking cam monitor with auxiliary switch
2 For use with vertical rod spacing between 4-5/8" and 5-3/8"			24D 24 Volt	606 Satin Brass	
3 For use with vertical rod spacing between 5-1/4" and 6"				612 Satin Bronze	
30 For use with vertical rod spacing between 2-5/8" and 3-3/8"				613 Bronze Toned 629 Bright Stainless Steel 630 Satin Stainless Steel	

How to Order *Specify quantity and the following information. Order related products separately.*

PREFIX	SERIES	KEEPER STYLE	FINISH
FP	- 310-4-X	(PK)	- 630
FACEPLATE ONLY			
FP Faceplate	1 For use with vertical rod spacing between 4" and 4-3/4" 2 For use with vertical rod spacing between 4-5/8" and 5-3/8" 30 For use with vertical rod spacing between 2-5/8" and 3-3/8"	(PK) For use with 3/4" Pullman style latchbolts	605 Bright Brass 606 Satin Brass 612 Satin Bronze 613 Bronze Toned 629 Bright Stainless Steel 630 Satin Stainless Steel

HES Folger Adam 310-6-1 Complete Pacs for Concealed Vertical Rods

MODEL	DESCRIPTION	627	612
310-6-1-12D		\$1396	\$1627
310-6-1-24D		\$1396	\$1627
310-6-1-F-12D	Fail safe	\$1396	\$1627
310-6-1-F-24	Fail safe	\$1396	\$1627
310-6-1-12D-LCBMA		\$1644	\$1875
310-6-1-24D-LCBMA		\$1644	\$1875
310-6-1-F-12D-LCBMA	Fail safe	\$1644	\$1875
310-6-1-F-24D-LCBMA	Fail safe	\$1644	\$1875

Vertical rod spacing between 4" and 4-3/4".



Faceplates

MODEL	627	612
FP-310-6-1	\$393	\$624

HES Folger Adam 310-6-2 Complete Pacs for Concealed Vertical Rods

MODEL	DESCRIPTION	627	612
310-6-2-12D		\$1396	\$1627
310-6-2-24D		\$1396	\$1627
310-6-2-F-12D	Fail safe	\$1396	\$1627
310-6-2-F-24D	Fail safe	\$1396	\$1627
310-6-2-12D-LCBMA		\$1644	\$1875
310-6-2-24D-LCBMA		\$1644	\$1875
310-6-2-F-12D-LCBMA	Fail safe	\$1644	\$1875
310-6-2-F-24D-LCBMA	Fail safe	\$1644	\$1875

Vertical rod spacing between 4-5/8" and 5-3/8".

Faceplates

MODEL	627	612
FP-310-6-2	\$393	\$624

HES Folger Adam 310-6-3 Complete Pacs for Concealed Vertical Rods

MODEL	DESCRIPTION	627	612
310-6-3-12D		\$1396	\$1627
310-6-3-24D		\$1396	\$1627
310-6-3-F-12D	Fail safe	\$1396	\$1627
310-6-3-F-24D	Fail safe	\$1396	\$1627
310-6-3-12D-LCBMA		\$1644	\$1875
310-6-3-24D-LCBMA		\$1644	\$1875
310-6-3-F-12D-LCBMA	Fail safe	\$1644	\$1875
310-6-3-F-24D-LCBMA	Fail safe	\$1644	\$1875

Vertical rod spacing between 5-1/4" and 6".

Faceplates

MODEL	627	612
FP-310-6-3	\$393	\$624

HES Folger Adam 310-6-8 Complete Pacs for Concealed Vertical Rods

MODEL	DESCRIPTION	627	612
310-6-8-12D		\$1396	\$1627
310-6-8-24D		\$1396	\$1627
310-6-8-F-12D	Fail safe	\$1396	\$1627
310-6-8-F-24D	Fail safe	\$1396	\$1627
310-6-8-12D-LCBMA		\$1644	\$1875
310-6-8-24D-LCBMA		\$1644	\$1875
310-6-8-F-12D-LCBMA	Fail safe	\$1644	\$1875
310-6-8-F-24D-LCBMA	Fail safe	\$1644	\$1875

Only used on active leaf.

HES Folger Adam 310-6-30 Complete Pacs for Concealed Vertical Rods

MODEL	DESCRIPTION	627	612
310-6-30-12D		\$1396	\$1627
310-6-30-24D		\$1396	\$1627
310-6-30-F-12D	Fail safe	\$1396	\$1627
310-6-30-F-24D	Fail safe	\$1396	\$1627
310-6-30-12D-LCBMA		\$1644	\$1875
310-6-30-24D-LCBMA		\$1644	\$1875
310-6-30-F-12D-LCBMA	Fail safe	\$1644	\$1875
310-6-30-F-24D-LCBMA	Fail safe	\$1644	\$1875

Vertical rod spacing between 2-5/8" and 3-3/8".

Faceplates

MODEL	627	612
FP-310-6-8	\$393	\$624

Faceplates

MODEL	627	612
FP-310-6-30	\$393	\$624

INSTALLATION NOTE: Double-door models are available with four different center-to-center dimensions between latchbolt keepers. Keepers are wide enough to compensate for vertical rod exit bolts, which may be as much as 3/8" (10 mm) off center-to-center dimension, either way. When using an electric strike in conjunction with a vertical rod exit device, it is necessary that:

1. The bottom rod of the exit device be removed or made inoperative
2. The latchbolt of the exit device be the "Pullman" or beveled type
3. The latchbolt be free-latching and remain projected while the door is open. Mechanisms that hold the latchbolt retracted while the door is open, and automatically release it when the door is closed, must be removed or made inoperative.

How to Order *Specify quantity and the following information. Order related products separately.*

SERIES	KEEPER STYLE	FAIL SAFE/SECURE	VOLTAGE	FINISH	OPTION(S)
310-6-X	(PK)	- F	- 24D	- 627	- LCBMA
COMPLETE PACS					
1 For use with vertical rod spacing between 4" and 4-3/4"	(PK) For use with 3/4" Pullman style latchbolts	(blank) Fail Secure (Standard)	12D 12 Volt	612 Satin Bronze	LCBMA Latchbolt & locking cam monitor with auxiliary switch
2 For use with vertical rod spacing between 4-5/8" and 5-3/8"		F Fail Safe	24D 24 Volt	627 Satin Aluminum	
3 For use with vertical rod spacing between 5-1/4" and 6"					
8 For only the active leaf of a pair of doors					
30 For use with vertical rod spacing between 2-5/8" and 3-3/8"					

How to Order *Specify quantity and the following information. Order related products separately.*

PREFIX	SERIES	KEEPER STYLE	FINISH
FP	- 310-6-X	(PK)	- 612
FACEPLATE ONLY			
FP Faceplate	1 For use with vertical rod spacing between 4" and 4-3/4" 2 For use with vertical rod spacing between 4-5/8" and 5-3/8" 3 For use with vertical rod spacing between 5-1/4" and 6" 8 For only the active leaf of a pair of doors 30 For use with vertical rod spacing between 2-5/8" and 3-3/8"	(PK) For use with 3/4" Pullman style latchbolts	612 Satin Bronze 627 Satin Aluminum

HES Folger Adam 310-1-1 Electric Strike Bodies

MODEL	DESCRIPTION	630
310-1-1-12D		\$933
310-1-1-24D		\$933
310-1-1-F-12D	Fail safe	\$933
310-1-1-F-24D	Fail safe	\$933
310-1-1-12D-LCBMA		\$1202
310-1-1-24D-LCBMA		\$1202
310-1-1-F-12D-LCBMA	Fail safe	\$1202
310-1-1-F-24D-LCBMA	Fail safe	\$1202



HES Folger Adam 310-1-2 Electric Strike Bodies

MODEL	DESCRIPTION	630
310-1-2-12D		\$933
310-1-2-24D		\$933
310-1-2-F-12D	Fail safe	\$933
310-1-2-F-24D	Fail safe	\$933
310-1-2-12D-LCBMA		\$1202
310-1-2-24D-LCBMA		\$1202
310-1-2-F-12D-LCBMA	Fail safe	\$1202
310-1-2-F-24D-LCBMA	Fail safe	\$1202

HES Folger Adam 310-1-3 Electric Strike Bodies

MODEL	DESCRIPTION	630
310-1-3-12D		\$933
310-1-3-24D		\$933
310-1-3-F-12D	Fail safe	\$933
310-1-3-F-24D	Fail safe	\$933
310-1-3-12D-LCBMA		\$1202
310-1-3-24D-LCBMA		\$1202
310-1-3-F-12D-LCBMA	Fail safe	\$1202
310-1-3-F-24D-LCBMA	Fail safe	\$1202

HES Folger Adam 310-1-30 Electric Strike Bodies

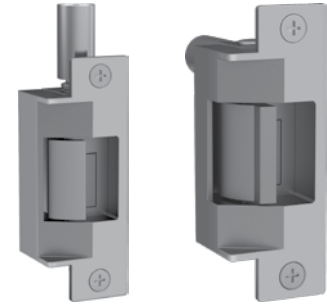
MODEL	DESCRIPTION	630
310-1-30-12D		\$933
310-1-30-24D		\$933
310-1-30-F-12D	Fail safe	\$933
310-1-30-F-24D	Fail safe	\$933
310-1-30-12D-LCBMA		\$1202
310-1-30-24D-LCBMA		\$1202
310-1-30-F-12D-LCBMA	Fail safe	\$1202
310-1-30-F-24D-LCBMA	Fail safe	\$1202

How to Order *Specify quantity and the following information. Order related products separately.*

PREFIX	SERIES	X - MODEL	KEEPER STYLE	FAIL SAFE/SECURE	VOLTAGE	OPTION(S)
SB	- 310-1	- 1	(PK)	- F	- 24D	- LCBMA
STRIKE BODY ONLY						
SB Strike Body	310-1 Strike Body Only	1 For use with vertical rod spacing between 4" and 4-3/4" 2 For use with vertical rod spacing between 4-5/8" and 5-3/8" 3 For use with vertical rod spacing between 5-1/4" and 6" 30 For use with vertical rod spacing between 2-5/8" and 3-3/8"	(PK) For use with Pullman style latchbolts	(blank) Fail Secure (Standard) F Fail Safe	12D 12 Volt 24D 24 Volt	LCBMA Latchbolt & locking cam monitor with auxiliary switch

HES Folger Adam 712 Complete Pacs for Latchbolt Locks

MODEL	DESCRIPTION	630	605	606	612	613	629
712-12D		\$662	\$771	\$741	\$741	\$702	\$741
712-24D		\$662	\$771	\$741	\$741	\$702	\$741
712-F-12D	Fail safe	\$662	\$771	\$741	\$741	\$702	\$741
712-F-24D	Fail safe	\$662	\$771	\$741	\$741	\$702	\$741
712-12D-LBMLCM		\$803	\$912	\$882	\$882	\$842	\$882
712-24D-LBMLCM		\$803	\$912	\$882	\$882	\$842	\$882
712-F-12D-LBMLCM	Fail safe	\$803	\$912	\$882	\$882	\$842	\$882
712-F-24D-LBMLCM	Fail safe	\$803	\$912	\$882	\$882	\$842	\$882



HES Folger Adam 712-75 Complete Pacs for Latchbolt Locks

MODEL	DESCRIPTION	630	605	606	612	613	629
712-75-12D		\$689	\$799	\$765	\$765	\$731	\$765
712-75-24D		\$689	\$799	\$765	\$765	\$731	\$765
712-75-F-12D	Fail safe	\$689	\$799	\$765	\$765	\$731	\$765
712-75-F-24D	Fail safe	\$689	\$799	\$765	\$765	\$731	\$765
712-75-12D-LBMLCM		\$830	\$939	\$905	\$905	\$871	\$905
712-75-24D-LBMLCM		\$830	\$939	\$905	\$905	\$871	\$905
712-75-F-12D-LBMLCM	Fail safe	\$830	\$939	\$905	\$905	\$871	\$905
712-75-F-24D-LBMLCM	Fail safe	\$830	\$939	\$905	\$905	\$871	\$905

700 & 742 Series | LBMLCM: When using LBMLCM with a SARGENT 78/8200 Series or BEST 40 Series Mortise Lock, a 1/2" or 5/8" keeper latchbolt detection will be dependent on the door gap in order to ensure functionality. Consult customer support regarding use with other manufacturers.

712-75, 732-75 and 742-75: The LBMLCM option is compatible with SARGENT 78/8200 Series or BEST 40 Series 3/4" throw mortise lock latchbolts in hollow metal and wood frame applications. Monitoring capabilities are dependent on a maximum 1/8" door gap in order to ensure functionality. Consult customer support regarding use with other manufacturers.

HES Folger Adam 732 Complete Pacs for Latchbolt Locks

MODEL	DESCRIPTION	630	605	606	612	613	629
732-12D		\$662	\$771	\$741	\$741	\$702	\$741
732-24D		\$662	\$771	\$741	\$741	\$702	\$741
732-F-12D	Fail safe	\$662	\$771	\$741	\$741	\$702	\$741
732-F-24D	Fail safe	\$662	\$771	\$741	\$741	\$702	\$741
732-12D-LBMLCM		\$803	\$912	\$882	\$882	\$842	\$882
732-24D-LBMLCM		\$803	\$912	\$882	\$882	\$842	\$882
732-F-12D-LBMLCM	Fail safe	\$803	\$912	\$882	\$882	\$842	\$882
732-F-24D-LBMLCM	Fail safe	\$803	\$912	\$882	\$882	\$842	\$882

HES Folger Adam 732-75 Complete Pacs for Latchbolt Locks

MODEL	DESCRIPTION	630	605	606	612	613	629
732-75-12D		\$689	\$751	\$765	\$765	\$731	\$765
732-75-24D		\$689	\$799	\$765	\$765	\$731	\$765
732-75-F-12D	Fail safe	\$689	\$799	\$765	\$765	\$731	\$765
732-75-F-24D	Fail safe	\$689	\$799	\$765	\$765	\$731	\$765
732-75-12D-LBMLCM		\$830	\$939	\$905	\$905	\$871	\$905
732-75-24D-LBMLCM		\$830	\$939	\$905	\$905	\$871	\$905
732-75-F-12D-LBMLCM	Fail safe	\$830	\$939	\$905	\$905	\$871	\$905
732-75-F-24D-LBMLCM	Fail safe	\$830	\$939	\$905	\$905	\$871	\$905

Faceplates

MODEL	630	605	606	612	613	629
FP-712	\$143	\$251	\$222	\$222	\$183	\$222
FP-712-75	\$169	\$279	\$245	\$245	\$212	\$245

How to Order Complete Pacs Specify quantity and the following information. Order related products separately.

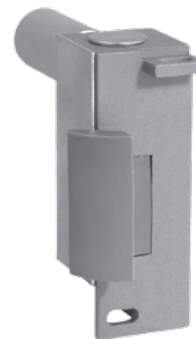
SERIES	FAIL SAFE/SECURE	VOLTAGE	FINISH	OPTION(S)
712	- F	- 24D	- 630	- LBMLCM
712 1/2" PK keeper standard; Hollow metal frames, for up to a 5/8" throw latchbolt	(blank)	12D 12 Volt	605 Bright Brass	LBMLCM
712-75 3/4" PK keeper standard; Hollow metal frames, for up to a 3/4" throw latchbolt without deadbolt	Fail Secure (Standard)	24D 24 Volt	606 Satin Brass	Latchbolt & locking cam monitor
			612 Satin Bronze	
732 1/2" PK keeper standard; Wood frames, for up to a 5/8" throw latchbolt	F Fail Safe		613 Bronze Toned	
732-75 3/4" PK keeper standard; Wood frames, for up to a 3/4" throw latchbolt without deadbolt			629 Bright Stainless Steel	
			630 Satin Stainless Steel	

How to Order Faceplate Only

PREFIX	SERIES	FINISH
FP	- 732-75	- 613
FP Faceplate	712 1/2" PK keeper standard; Hollow metal frames, for up to a 5/8" throw latchbolt	605 Bright Brass
	712-75 3/4" PK keeper standard; Hollow metal frames, for up to a 3/4" throw latchbolt without deadbolt	606 Satin Brass
	732 PK keeper standard; Wood frames, for up to a 5/8" throw latchbolt	612 Satin Bronze
	732-75 3/4" PK keeper standard; Wood frames, for up to a 3/4" throw latchbolt without deadbolt	613 Bronze Toned
		629 Bright Stainless Steel
		630 Satin Stainless Steel

HES Folger Adam SB710 Electric Strike Bodies

MODEL	DESCRIPTION	630
710-12D		\$520
710-24D		\$520
710-F-12D	Fail safe	\$520
710-F-24D	Fail safe	\$520
710-12D-LBMLCM		\$660
710-24D-LBMLCM		\$660
710-F-12D-LBMLCM	Fail safe	\$660
710-F-24D-LBMLCM	Fail safe	\$660



HES Folger Adam SB710-75 Electric Strike Bodies

MODEL	DESCRIPTION	630
710-75-12D		\$520
710-75-24D		\$520
710-75-F-12D	Fail safe	\$520
710-75-F-24D	Fail safe	\$520
710-75-12D-LBMLCM		\$660
710-75-24D-LBMLCM		\$660
710-75-F-12D-LBMLCM	Fail safe	\$660
710-75-F-24D-LBMLCM	Fail safe	\$660

HES Folger Adam 730 Electric Strike Bodies

MODEL	DESCRIPTION	630
730-12D		\$520
730-24D		\$520
730-F-12D	Fail safe	\$520
730-F-24D	Fail safe	\$520
730-12D-LBMLCM		\$660
730-24D-LBMLCM		\$660
730-F-12D-LBMLCM	Fail safe	\$660
730-F-24D-LBMLCM	Fail safe	\$660

HES Folger Adam 730-75 Electric Strike Bodies

MODEL	DESCRIPTION	630
730-75-24D		\$520
730-75-12D		\$520
730-75-F-12D	Fail safe	\$520
730-75-F-24D	Fail safe	\$520
730-75-12D-LBMLCM		\$660
730-75-24D-LBMLCM		\$660
730-75-F-12D-LBMLCM	Fail safe	\$660
730-75-F-24D-LBMLCM	Fail safe	\$660

How to Order *Specify quantity and the following information. Order related products separately.*

PREFIX	STRIKE SERIES	KEEPER STYLE	FAIL SAFE/SECURE	VOLTAGE	OPTION(S)
SB	- 710	(3/4)	- F	- 24D	-LCBMA
Strike BODY ONLY					
SB Strike Body	710 Hollow metal frames, for up to a 5/8" throw latchbolt 710-75 Hollow metal frames, for up to a 3/4" throw latchbolt without deadbolt 730 Wood frames, for up to a 5/8" throw latchbolt 730-75 Wood frames, for up to a 3/4" throw latchbolt without deadbolt	1/2 1/2" Keeper 3/4 3/4" Keeper	(blank) Fail Secure (Standard) F Fail Safe	12D 12 Volt 24D 24 Volt	LBMLCM Latchbolt & locking cam monitor

INSTALLATION NOTE: Double-door models are available with four different center-to-center dimensions between latchbolt keepers. Keepers are wide enough to compensate for vertical rod exit bolts, which may be as much as 3/8" (10 mm) off center-to-center dimension, either way. When using an electric strike in conjunction with a vertical rod exit device, it is necessary that:

1. The bottom rod of the exit device be removed or made inoperative.
2. The latchbolt of the exit device be the "Pullman" or beveled type.
3. The latchbolt be free-latching and remain projected while the door is open. Mechanisms that hold the latchbolt retracted while the door is open, and automatically release it when the door is closed, must be removed or made inoperative.

HES Folger Adam 742-75 Complete Pacs for Latchbolt Locks

MODEL	DESCRIPTION	630	605	606	612	613	629
742-75-12D		\$716	\$826	\$793	\$793	\$754	\$793
742-75-24D		\$716	\$826	\$793	\$793	\$754	\$793
742-75-F-12D	Fail safe	\$716	\$826	\$793	\$793	\$754	\$793
742-75-F-24D	Fail safe	\$716	\$826	\$793	\$793	\$754	\$793
742-75-12D-LBMLCM		\$855	\$966	\$933	\$933	\$894	\$933
742-75-24D-LBMLCM		\$855	\$966	\$933	\$933	\$894	\$933
742-75-F-12D-LBMLCM	Fail safe	\$855	\$966	\$933	\$933	\$894	\$933
742-75-F-24D-LBMLCM	Fail safe	\$855	\$966	\$933	\$933	\$894	\$933



Faceplates

MODEL	630	605	606	612	613	629
FP-742	\$158	\$268	\$234	\$234	\$196	\$234

How to Order Complete Pacs

Specify quantity and the following information. Order related products separately.

SERIES	FAIL SAFE/SECURE	VOLTAGE	FINISH	OPTION(S)
742-75	- F	- 12D	- 613	- LBMLCM
742-75	(blank) Fail Secure (Standard) F Fail Safe	12D 12 Volt 24D 24 Volt	605 Bright Brass 606 Satin Brass 612 Satin Bronze 613 Bronze Toned 629 Bright Stainless Steel 630 Satin Stainless Steel	LBMLCM Latchbolt & locking cam monitor

How to Order Faceplate Only

PREFIX	SERIES	FINISH
FP	- 742-75	- 630
FP Faceplate	742-75 Hollow metal frames, for up to a 3/4" throw latchbolt without deadbolt	605 Bright Brass 606 Satin Brass 612 Satin Bronze 613 Bronze Toned 629 Bright Stainless Steel 630 Satin Stainless Steel

HES Folger Adam SB740-75 Electric Strike Bodies

MODEL	DESCRIPTION	630
740-75-12D		\$558
740-75-24D		\$558
740-75-F-12D	Fail safe	\$558
740-75-F-24D	Fail safe	\$558
740-75-12D-LBMLCM		\$698
740-75-24D-LBMLCM		\$698
740-75-F-12D-LBMLCM	Fail safe	\$698
740-75-F-24D-LBMLCM	Fail safe	\$698



How to Order

Specify quantity and the following information. Order related products separately.

PREFIX	SERIES	KEEPER STYLE	FAIL SAFE/SECURE	VOLTAGE	OPTION(S)
SB	740-75	(3/4)	—	- 24D	—
STRIKE BODY ONLY					
SB Strike Body	740-75	3/4 3/4" Keeper	(blank) Fail Secure (Standard) F Fail Safe	12D 12 Volt 24D 24 Volt	LBMLCM Latchbolt & locking cam monitor

700 & 742 Series | LBMLCM: When using LBMLCM with a SARGENT 78/8200 Series or BEST 40 Series Mortise Lock, a 1/2" or 5/8" keeper latchbolt detection will be dependent on the door gap in order to ensure functionality. Consult customer support regarding use with other manufacturers.

712-75, 732-75 and 742-75: The LBMLCM option is compatible with SARGENT 78/8200 Series or BEST 40 Series 3/4" throw mortise lock latchbolts in hollow metal and wood frame applications. Monitoring capabilities are dependent on a maximum 1/8" door gap in order to ensure functionality. Consult customer support regarding use with other manufacturers.

HES Electric Strike Accessories

ITEM	DESCRIPTION	PRICE
HES-CUT-MTK	For installing the 1006, 1500, 1600, 4500, 5000, 5200, 7000, and 7501 electric strikes (4-7/8" ANSI jamb preparations only).	\$77
9000-MTK	Metal template installation kit.	\$79
SMB	Surface mounting box.	\$215
150	Stainless steel. Installed at the edge of the door to cover the lock and electric strike. Available in 626 finish only.	\$90
152	Mount inside hollow metal and aluminum jambs.	\$26
157	Torx screws.	\$14
157D	Tamper-Resistant Torx R20 insert bit.	\$42
310-2-3	Designed to prevent tampering with the latchbolt as well as the latchbolt keeper. Prevents one door from being open before the other.	\$211
2001-1	Converts AC to unfiltered DC. Rated 35 V, 2 Amp. Not recommended for 1006 Electric Strike.	\$39
2001M	Converts AC to unfiltered DC. Rated 35 V, 1 Amp. Includes MOV and self-resettable fuse. Not recommended for 1006 Electric Strike.	\$67
2004M	Adapter between existing HES electric strikes and ElectroLynx® connectors.	\$41
2005M3	In-line power controller able to receive input voltages from 12–32V AC or DC. Built-in bridge rectifier. Reduces initial voltage by 25% to extend the life of the electric strike. Includes built-in resettable fuse, MOV, voltage regulation and input voltage level indicating and unit status. Addition of Smart Pac® III to any Electric Strike extends the 5-year no-fault warranty to a 10-year no-fault warranty. For use with 1006, input voltage must be DC.	\$102
2006M	Audible operation indicator at 24 VDC, 75 db at 11-3/4".	\$50
2007M	With 4" wire leads.	\$21

Electromagnetic Locks

Securitron M380E EcoMag® 600 lbs Intelligent Magnalocks®

MODEL	DESCRIPTION	600	605	606	612	613E	628	629	630	BSP
M380EBD	BondSTAT, DPS	\$691	\$752	\$752	\$752	\$691	\$644	\$752	\$752	\$691
M380EBDX	BondSTAT, DPS, REX	\$855	\$902	\$902	\$902	\$855	\$799	\$902	\$902	\$855



How to Order *Specify quantity and the following information. Order related products separately.*

MODEL SERIES	ACCESSORY OPTIONS	FINISH OPTIONS*
M680E	X	- 606
M380EBD 600 lbs with BondSTAT Monitor & Door Position Switch	(blank) No Accessory Options X PIR Request to Exit	628/US28 Satin Aluminum Clear 605/US3 Bright Brass 606/US4 Satin Brass 612/US10 Satin Bronze 613E Dark Oxidized Satin Bronze 629 Bright Stainless Steel 630 Satin Stainless Steel BSP Black Suede Powder WSP* White Suede Powder (Coming Soon)

Securitron M680E EcoMag® 1,200 lbs Intelligent Magnalocks®

MODEL	DESCRIPTION	600	605	606	612	613E	628	629	630	BSP
M680E							\$664			
M680EBD	BondSTAT, DPS	\$832	\$833	\$833	\$833	\$781	\$729	\$833	\$833	\$781
M680EBDX	BondSTAT, DPS, REX	\$1085	\$1085	\$1085	\$1085	\$1033	\$981	\$1085	\$1085	\$1033



How to Order *Specify quantity and the following information. Order related products separately.*

MODEL SERIES	MONITORING OPTIONS	ACCESSORY OPTIONS	FINISH OPTIONS*
M680E	BD	X	- 606
M680E (1,200 lbs)	(blank) No Monitoring BD BondSTAT Monitor & Door Position Switch	(blank) No Accessory Options X PIR Request to Exit	600 Paintable Primer Gray Finish 628/US28 Satin Aluminum Clear 605/US3 Bright Brass 606/US4 Satin Brass 612/US10 Satin Bronze 613E Dark Oxidized Satin Bronze 629 Bright Stainless Steel 630 Satin Stainless Steel BSP Black Suede Powder WSP* White Suede Powder (Coming Soon)

Securiton iMXDa Delayed Egress

ITEM	DESCRIPTION	PRICE
iMXDa	Dual Voltage, Integrated Initiation	\$1337
iMXDa-CA15S	Dual Voltage, California, 15 sec	\$1337
iMXDa-CA30S	Dual Voltage, California, 30 sec	\$1337
iMXDaCH	Dual Voltage, Chicago	\$1337
iMXDaH	iMXDa for HUGS Infant Protection System	\$1337
iEXDa	Dual Voltage, External Initiation	\$1186



Delayed Egress Magnalock Accessories

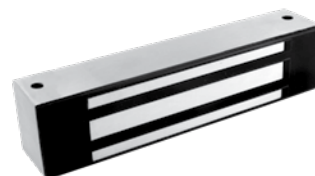
ITEM	DESCRIPTION	PRICE
BA-XDT-12	12 VDC Boxed Alarm & Door Label Exit Delay Timer	\$273
BA-XDT-24	24 VDC Boxed Alarm & Door Label Exit Delay Timer	\$273
EXD-1L	Label & Documentation Exit Delay System	\$24
FA-XDT-12	12 VDC, Flush Mount with Alarm & Door Exit Delay Timer	\$273
FA-XDT-24	24 VDC, Flush Mount with Alarm & Door Exit Delay Timer	\$273
XDT-12	12 VDC Exit Delay Timer	\$180
XDT-24	24 VDC Exit Delay Timer	\$180
SB-MXD	Sex Bolt Kit — Door Movement	\$200

How to Order Specify quantity and the following information. Order related products separately.

MODEL SERIES	TIMING OPTIONS
iMXDa	CH
iMXDa Integrated Initiation	(blank) Adjustable Timing –CA15S California Required 15s Timings
iEXDa External Initiation	–CA30S California Required 30s Timings CH Chicago Required Timings H HUGS Infant Protection Timings

Securiton M32 600 lbs Durable Magnalocks®

ITEM	DESCRIPTION	PRICE
M32BD	BondSTAT Monitor & Door Position Switch	\$556
M32D	Door Position Switch	\$458
M32	No Monitoring	\$387
M32B	BondSTAT Monitor	\$495
M32F	Face Drilled, No Monitoring	\$387
M32FB	Face Drilled, BondSTAT Monitor	\$495
M32FBD	Face Drilled, BondSTAT Monitor & Door Position Switch	\$556
M32FD	Face Drilled, Door Position Switch	\$458



How to Order Specify quantity and the following information. Order related products separately.

MODEL SERIES	MOUNTING METHOD	MONITORING OPTIONS	STRIKE PLATE OPTIONS
M32		BD	-SS
M32 (600 lbs)	(blank) Direct Mount F Face Drilled	(blank) No Monitoring B BondSTAT Monitor D Door Position Switch BD BondSTAT Monitor & Door Position Switch	(blank) Standard Strike SS Split Strike (Add \$120)* SASM Shock Absorbing Strike Mount (Add \$75)

**D and BD monitoring options not available with (SS) Split Strike option.*

Securitron M62 1,200 lbs Durable Magnalocks®



ITEM	DESCRIPTION	PRICE
M62	No Monitoring	\$495
M62B	BondSTAT Monitor	\$603
M62BD	BondSTAT Monitor & Door Position Switch	\$663
M62D	Door Position Switch	\$567
M62F	Face Drilled	\$495
M62FB	Face Drilled, BondSTAT Monitor	\$603
M62FBD	Face Drilled, BondSTAT Monitor & Door Position Switch	\$663
M62FD	Face Drilled, Door Position Switch	\$567
M62G	Gate Conduit	\$522
M62GB	Gate Conduit, BondSTAT Monitor	\$629
M62GBD	Gate Conduit, BondSTAT Monitor & Door Position Switch	\$691
M62GD	Gate Conduit, Door Position Switch	\$595
M62FG	Face Drilled, Gate Conduit	\$522
M62FGB	Face Drilled, Gate Conduit, BondSTAT Monitoring	\$629
M62FGBD	Face Drilled, Gate Conduit, BondSTAT Monitoring & Door Position Switch	\$691
M62FGD	Face Drilled, Gate Conduit, Door Position Switch	\$595

How to Order *Specify quantity and the following information. Order related products separately.*

MODEL SERIES	MOUNTING METHOD	MONITORING OPTIONS	STRIKE PLATE OPTIONS
M62	FG	BD	-SS
M62 (600 lbs)	(blank) Direct Mount F Face Drilled G Gate Conduit	(blank) No Monitoring B BondSTAT Monitor D Door Position Switch BD BondSTAT Monitor & Door Position Switch	(blank) Standard Strike OS Offset Strike SS Split Strike (Add \$96)* SASM Shock Absorbing Strike Mount (Add \$75)

**D and BD monitoring options not available with (SS) Split Strike option.*

Securitron M82 1,800 lbs Durable Magnalocks®



ITEM	DESCRIPTION	PRICE
M82B	BondSTAT Monitor	\$694
M82BD	BondSTAT Monitor & Door Position Switch	\$756
M82FB	Face Drilled, BondSTAT Monitor	\$694
M82FBD	Face Drilled, BondSTAT Monitor & Door Position Switch	\$756
M82GB	Gate Conduit, BondSTAT Monitor	\$723
M82GBD	Gate Conduit, BondSTAT Monitor & Door Position Switch	\$783
M82FGB	Face Drilled, Gate Conduit, BondSTAT Monitor	\$723
M82FGBD	Face Drilled, Gate Conduit, BondSTAT Monitor & Door Position Switch	\$783

How to Order *Specify quantity and the following information. Order related products separately.*

MODEL SERIES	MOUNTING METHOD	MONITORING OPTIONS	STRIKE PLATE OPTIONS
M82	FG	BD	-SS
M82 (600 lbs)	(blank) Direct Mount F Face Drilled G Gate Conduit	B BondSTAT Monitor BD BondSTAT Monitor & Door Position Switch	(blank) Standard Strike OS Offset Strike SS Split Strike (Add \$121)* SASM Shock Absorbing Strike Mount (Add \$75)

**D and BD monitoring options not available with (SS) Split Strike option.*

Securiton ASB Aluminum Frame Spacer Bracket

MODEL	DESCRIPTION	BK	CL
ASB-32	For M32	\$66	\$49
ASB-62	For M62	\$66	\$49
ASB-82	For M82	\$92	\$79

Securiton CWB Concrete/Wood Bracket

MODEL	DESCRIPTION	BK	CL
CWB-32	For M32	\$73	\$62
CWB-62	For M62	\$66	\$70
CWB-82	For M82	\$99	\$87

Securiton ZA Adjustable Z-Bracket

MODEL	DESCRIPTION	BK	CL	SS
ZA-32, ZA-62	For M32 and M62	\$185	\$174	\$196
ZA-82	For M82	\$224	\$209	\$235

How to Order *Specify quantity and the following information. Order related products separately.*

BRACKET TYPE	MODEL SERIES	STRIKE PLATE OPTIONS
ASB	-32	BK
ASB Aluminum Frame Spacer Bracket	32	BK Black Anodized
CWB Concrete/Wood Bracket	62	CL Clear Anodized
ZA Adjustable Z-Bracket	82	SS Satin Stainless

Securiton M32, M62, M82 Lock Housing

MODEL	DESCRIPTION	630
HHD	Double Horizontal	\$941
HHSL	Single Horizontal with Left Hand Reverse	\$782
HHSR	Single Horizontal with Right Hand Reverse	\$782
HVD	Double Vertical	\$951

How to Order

Specify quantity and the following information. Order related products separately.

HOUSING TYPE	MODEL SERIES	SPECIFY LENGTH (NOT USED IN PART NUMBER)
HHD	- 32	(83")
HHD	32	HHD Max Length 96"
HHSL	62	HHSL Max Length 48"
HHSR	82	HHSR Max Length 48"
HVD		HVD Max Length 96"

Securiton M32, M62, M82 Dress Covers

MODEL	DESCRIPTION	BK	BP	CL	SP
DC-32	For M32	\$48	\$122	\$48	\$122
DC-62	For M62	\$48	\$122	\$48	\$122
DC-82	For M82	\$53	\$128	\$53	\$128
DDC-32	Double — For M32	\$77		\$77	
DDC-62	Double — For M62	\$77		\$77	

How to Order

Specify quantity and the following information. Order related products separately.

DRESS COVER	MODEL	FINISH
DC	- 32	BK
DC Dress Cover	32	BK Black Anodized
DDC Double Dress Cover (available in models 32 & 62 in BK and CL finishes only)	62	BP Brass Polished
	82	CL Clear Anodized
		SP Stainless Polished

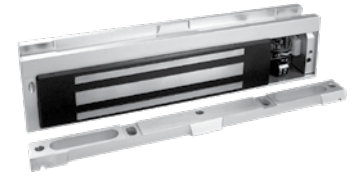
Securiton M32, M62, M82 Accessories

ITEM	DESCRIPTION	PRICE
AOS-62	Offset Strike Plate for M62	\$130
AOS-62D	Offset Strike Plate for M62D	\$160
AOS-82	Offset Strike Plate for M82	\$170
APS-32	Strike Plate for M32	\$122
APS-62	Strike Plate for M62	\$136
APS-82	Strike Plate for M82	\$159
ASS-32	Strike Plate for M32 — Split Set with Fasteners & Sex Bolt	\$168
ASS-62	Strike Plate for M62 — Split Set with Fasteners & Sex Bolt	\$194
ASS-82	Strike Plate for M82 — Split Set with Fasteners & Sex Bolt	\$216
EASB-250	Energy Absorbing Bolt — 1/4" Spacer Kit	\$48
EASB-32	Energy Absorbing Sex Bolt for M32	\$275

ITEM	DESCRIPTION	PRICE
EASB-62	Energy Absorbing Sex Bolt for M62	\$368
EASB-82	Energy Absorbing Sex Bolt for M82	\$368
SASM	Shock Absorbing Strike Mount for M32, M62, M82	\$75
SB-1	Sex Bolt Replacement, Clear	\$13
SB-1-03	Sex Bolt Replacement, Polished Brass	\$34
SB-1-10B	Sex Bolt Replacement, Oil-Rubbed Bronze	\$34
TDK-1	Thick Door Kit	\$31

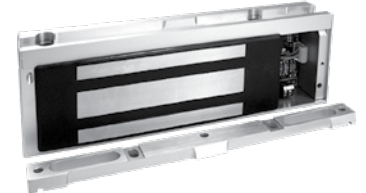
Securitron M38 600 lbs Durable Magnalocks®

ITEM	DESCRIPTION	PRICE
M38	12/24 VDC	\$430
M38D	12/24 VDC, DPS	\$501
M38DL	12/24 VDC, DPS, LED	\$532
M38DLS	12/24 VDC, DPS, LED, Senstat	\$601
M38DLST	12/24 VDC, DPS, LED, Senstat, Tamper	\$654
M38DS	12/24 VDC, DPS, Senstat	\$572
M38S	12/24 VDC, Senstat	\$487



Securitron M68 1,200 lbs Durable Magnalocks®

ITEM	DESCRIPTION	PRICE
M68D	12/24 VDC, DPS	\$607
M68DL	12/24 VDC, DPS, LED	\$637
M68DLS	12/24 VDC, DPS, LED, Senstat	\$707
M68DLST	12/24 VDC, DPS, LED, Senstat, Tamper	\$760
M68DS	12/24 VDC, DPS, Senstat	\$677
M68S	12/24 VDC, Senstat	\$607
M68	12/24 VDC	\$537



Accessories

ITEM	DESCRIPTION	PRICE
DC-38SP	Stainless Polished Dress Cover for M38	\$122
DC-68SP	Stainless Polished Dress Cover for M68	\$122
TJ-38CL	Clear Anodized In-Swing Door Kit for M38	\$206
TJ-68CL	Clear Anodized In-Swing Door Kit for M68	\$206

How to Order

Specify quantity and the following information. Order related products separately.

MODEL SERIES	MONITORING OPTIONS
M38	DLST
M38 (600lbs)	(blank) No Monitoring
M68 (1,200 lbs)	D Door Position Switch
	L LED Indicator
	S Senstat Monitor
	T Tamper Monitor

Header Extension Brackets

MODEL	DESCRIPTION	BK	CL
HEB-1xx-12	1" x 1" x 12"	\$65	\$50
HEB-1xx-8	1" x 1" x 8"	\$55	\$46
HEB-2xx-12	2" x 2" x 12"	\$74	\$66
HEB-2xx-8	2" x 2" x 8"	\$72	\$60
HEB-3G	3" x 3" x 8" for Glass Door	\$89	
HEB-3xx-12	3" x 3" x 12"	\$93	\$78
HEB-3xx-8	3" x 3" x 8"	\$83	\$74

How to Order

Specify quantity and the following information. Order related products separately.

MODEL	SIZE	FINISH	SIZE
HEB	-1	BK	-8
HEB Header Extension	1 1" x 1"	BK Black Anodized	8
	2 2" x 2"	CL Clear Anodized	12
	3 3" x 3"		

Universal Header Brackets

MODEL	DESCRIPTION	BK	CL
UHB-xx-12	12" Header Bracket	\$133	\$117
UHB-xx-8	8" Header Bracket	\$96	\$82

How to Order

Specify quantity and the following information. Order related products separately.

MODEL	FINISH	SIZE
UHB	BK	-8
UHB Universal Header Extension	BK Black Anodized	8"
	CL Clear Anodized	12"

Stop Filler Plates

MODEL	DESCRIPTION	BK	CL
SFP-1/2-xx-12	1/2" x 1-1/4" x 12"	\$45	\$34
SFP-1/2-xx-8	1/2" x 1-1/4" x 8"	\$41	\$30
SFP-1/4-xx-12	1/4" x 1-1/4" x 12"	\$45	\$34
SFP-3/8-xx-12	3/8" x 1-1/4" x 12"	\$45	\$35
SFP-3/8-xx-8	3/8" x 1-1/4" x 8"	\$41	\$31
SFP-5/8-xx-12	5/8" x 1-1/4" x 12"	\$47	\$36
SFP-5/8-xx-8	5/8" x 1-1/4" x 8"	\$41	\$33
SPF-1/4-xx-8	1/4" x 1-1/4" x 8"	\$41	\$31

How to Order

Specify quantity and the following information. Order related products separately.

MODEL	SIZE	FINISH	SIZE
SFP	-1/2	BK	-8
SFP Stop Filler Plate	1/2" 1/4" 3/8" 5/8"	BK Black Anodized CL Clear Anodized	8" 12"

Additional Accessories

ITEM	DESCRIPTION	PRICE
AKG	Adhesive Kit for GDB	\$182
DCP-12x3	Dress Cover Plate, 12" x 3" for larger strikes (M380, M680)	\$36
GDB	Glass Door Bracket	\$75
IK	Installation Kit	\$548

Securitron DM62 Double 1,200 lbs Durable Magnalocks

ITEM	DESCRIPTION	PRICE
DM62	12/24 VDC	\$1039
DM62B	12/24 VDC, MBS	\$1266
DM62D	12/24 VDC, DPS	\$1195
DM62BD	12/24 VDC, MBS, DPS	\$1397



Accessories

ITEM	DESCRIPTION	PRICE
ASCWB-DM62CL	Alum 1-1/2" Spacer — Concrete/Wood Bracket, DM62, Clear	\$182

How to Order

Specify quantity and the following information. Order related products separately.

MODEL SERIES	MONITORING OPTIONS	STRIKE PLATE OPTIONS
DM62	BD	- OS
DM62	(blank) No Monitoring B BondSTAT Monitor D Door Position Switch	(blank) Standard Strike OS Offset Strike

Securitron M34R 500 lbs. Recessed Magnalock

ITEM	DESCRIPTION	PRICE
M34R	12/24 VDC, Recessed	\$425
M34RB	12/24 VDC, Recessed, MBS	\$537
M34RD	12/24 VDC, Recessed, DPS	\$502
M34RBD	12/24 VDC, Recessed, MBS, DPS	\$600



How to Order

Specify quantity and the following information. Order related products separately.

MODEL SERIES	MONITORING OPTIONS
M34R	BD
M34R (500 lbs)	(blank) No Monitoring B BondSTAT Monitor D Door Position Switch

Securitron SAM 1,200 lbs. Shear Aligning Magnalocks

ITEM	DESCRIPTION	PRICE
SAM	12/24 VDC, Self Aligning	\$966
SAMB	12/24 VDC, Self Aligning, MBS	\$1052
SAMD	12/24 VDC, Self Aligning, DPS	\$1029
SAMBD	12/24 VDC, Self Aligning, MBS, DPS	\$1112
SAMN		\$975



Securitron SAM-24 600 lbs. Mini Shear Magnalock

ITEM	DESCRIPTION	PRICE
SAM2-24	24 VDC	\$762
SAM2C-24	24 VDC, Bond Sensor	\$723



Accessories

ITEM	DESCRIPTION	PRICE
SWB-03	SAM Wood Bracket — Brass Polished	\$172
SWB-10B	SAM Wood Bracket — Oil Rubbed Bronze	\$134
SWB-26D	SAM Wood Bracket — Satin Stainless	\$101
SMLS	Surface Mount Housing Lock — Shear	\$187
SMSS	Surface Mount Housing Strike — Shear	\$181

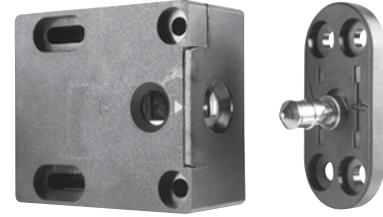
How to Order *Specify quantity and the following information. Order related products separately.*

MODEL SERIES	MONITORING OPTIONS	VOLTAGE
SAM2	C	- 24
SAM2 (600 lbs)	(blank) No Monitoring	24 24 VDC Only
SAM (1,200 lbs)	B BondSTAT Monitor	(blank) Autosensing dual voltage 12/24 VDC
	C Bond Sensor	
	D Door Position Switch	

Cabinet Locks

HES 610 Multi-Purpose Electromechanical Lock

ITEM	DESCRIPTION	PRICE
610	Standard — No Monitoring	\$124
610LM	Locked State Monitoring	\$172



How to Order *Specify quantity and the following information. Order related products separately.*

SERIES	OPTION(S)
610	– LM
610 Cabinet Lock	(blank) No Monitoring LM Locked State Monitoring

HES 660 Multi-Purpose Electromechanical Lock

MODEL	BLK
660	\$152
660-LBSM	\$188
660-LBSM-20PK	\$3760
660-LBSM-Preload	\$258
660-Preload	\$226



Accessories

ITEM	DESCRIPTION	PRICE
660-KO	660 Key override	\$84

How to Order *Specify quantity and the following information. Order related products separately.*

SERIES	VOLTAGE	OPTION(S)
660	– 12V	– LBSM – Preload
660 Cabinet Lock	12V 12 Volt 24V 24 Volt	(blank) No preload, no monitoring Preload Up to 15 lbs LBSM Locked state monitoring LBSM-20PK Locked state monitoring 20 pack LBSM-Preload Locked state monitoring with Preload

HES K20 Series Cabinet Lock

MODEL	DESCRIPTION	BLK
K20	Stand-alone 13.56 MHz RFID Cabinet Lock	\$175



HES KP20 Series Cabinet Lock

MODEL	DESCRIPTION	BLK
KP20	Stand-alone Keypad Cabinet Lock	\$155



HES K100 Aperio® Factory Paired Cabinet Lock with AH20 Wiegand Hub

ITEM	DESCRIPTION	PRICE
K100-622H-IPS-BP	Black, Pinch Knob	\$897

HES K100 Demo Mounts

MODEL	DESCRIPTION	BK
K100 Demo Mounts	Mounted Demo, iClass	\$1025

Accessories

ITEM	DESCRIPTION	PRICE
OBS-622	K Series Open Back Strike Plate	\$26



How to Order *Specify quantity and the following information. Order related products separately.*

SERIES	MODEL	CREDENTIAL TECHNOLOGY	COLOR	KNOB TYPE	SHAFT LENGTH (DOOR THICKNESS)
K100	- 622	- IPS	- B	P	2
	622H* Factory Paired* for Doors with AH20 1:1 Wiegand Hub	IPS HID Prox®, Kantech ioProx, HID iCLASS®, HID iCLASS SE® (SIOenabled), HID iCLASS® Seos™, HID MIFARE® SE, HID DESFire® EV1 SE, MIFARE Classic, MIFARE DESFire EV1, NFC-enabled mobile phones	B Black	P Pinch L Lever	_(Blank) 1/16" to 1/2" (standard) 2 ≥ 1/2" to 1-1/2" 3 ≥ 1-1/2" to 2-1/4"

*Kit includes integrated lock paired with Wiegand 1:1 wireless hub.

HES K100: The HES K100 Cabinet Lock is available as either a pre-paired lock and hub kit (no certification required) or as a field configurable component (requires Aperio® Certified Integrator certification). Pre-paired kits support limited features. Field configured devices are required in order to support all options. Visit www.IntelligentOpenings.com to learn more.

HES K200 Series Wiegand Cabinet Lock

ITEM	DESCRIPTION	PRICE
K200-622-B2	Wiegand, MultiCLASS Reader, Black, Pinch	\$625



HES KS200 Series Server Cabinet Lock

ITEM	DESCRIPTION	PRICE
KS200-640	Wiegand, MultiCLASS SE, Black	\$575



Accessories

ITEM	DESCRIPTION	PRICE
OBS-622	K Series Open Back Strike Plate	\$26
CBL6-QC12	Lock Side Interface Cable: 6 Foot, 12 Conductor and Molex both ends	\$50
CBL12-QC12	System Side Interface Cable: 12 Foot, 12 Conductor and Molex one end, pinned one end	\$69
SFIC	MEDECO X4 (2 Keys—1 Control, 1 User)	\$87
SFIC-BC	KS SFIC Blank, Black Plastic Core	\$4
KS-DPS	Surface Mount DPS (external)	\$20
KS-CAM45	CAM: 45MM—5	\$4
KS-CAM38	CAM: 38MM—1	\$4
WT-1	Wiegand Test Box with LED Indicators	\$400
WT-2	Wiegand Test Box with LCD Backlit Display with LED Indicators	\$500

Securitron MCL 180 lbs Cabinet Magnalock

ITEM	DESCRIPTION	PRICE
MCL-24	24 VDC	\$248



Securitron M32-SS 600 lbs Cabinet Magnalock

ITEM	DESCRIPTION	PRICE
M32-SS	No monitoring	\$504
M32B-SS	BondSTAT monitoring	\$612



Specialty Locks

Securiton GL1 Specialty Gate Locks

ITEM	DESCRIPTION	PRICE
GL1-FL	Gate Lock, 12/24 VDC, Standard Fail Locked	\$387
GL1-FLM	Gate Lock, 12/24 VDC, Fail Locked Monitored	\$398
GL1-FS	Gate Lock, 12/24 VDC, Standard Fail Safe	\$387
GL1-FSM	Gate Lock, 12/24 VDC, Fail Safe Monitored	\$398



Accessories

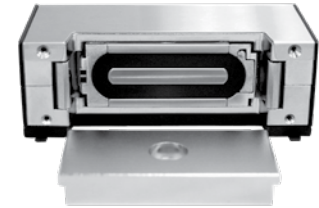
ITEM	DESCRIPTION	PRICE
FMB9-4	Post Shim Kit for Flex Mount Brackets — (Set of 4)	\$26
FMK-SL	Flex Mount Kit for Sliding Gate	\$121
FMK-SW	Flex Mount Kit for Swinging Gate	\$150
GMC	Gate Lock Mortise Cylinder (for use with FL Models only)	\$42

How to Order Specify quantity and the following information. Order related products separately.

MODEL SERIES	LOCK FAIL STATE	MONITORING OPTIONS
GL1	- FS	
GL1	FL Fail Locked (Fail Secure) FS Fail Safe	(blank) No Monitoring M Monitored

Securiton MM15 Specialty Electromechanical Magnalock

ITEM	DESCRIPTION	PRICE
MM15	12/24V, AC/DC	\$495
MM15DT	12/24 V, AC/DC, DPS, Tamper Switch	\$606
MM15G	12/24V, AC/DC, Gate Conduit	\$550
MM15GDT	12/24 V, AC/DC, Gate Conduit, DPS, Tamper Switch	\$637



How to Order Specify quantity and the following information. Order related products separately.

MODEL SERIES	MOUNTING METHOD	MONITORING OPTIONS
MM15	G	DT
MM15	(blank) Direct Mount G Gate Conduit	(blank) No Monitoring DT Door Position Switch and Tamper Switch

Brackets

MODEL	DESCRIPTION	BK	CL
HEB-1xx-MM15	1" Header Extension Bracket	\$54	\$42
HEB-2xx-MM15	2" Header Extension Bracket	\$54	\$42
HEB-3xx-MM15	3" Header Extension Bracket	\$54	\$42
SFP-1/2xxMM15	1/2" Stop Filler Plate	\$46	\$34
SFP-3/8xxMM15	3/8" Stop Filler Plate	\$46	\$34
SFP-5/8xxMM15	5/8" Stop Filler Plate	\$48	\$36
Z-MM15	Z-Bracket	\$130	\$116

Dress Cover

MODEL	BK	BP	BS
DC-MM15	\$44	\$113	\$122

Tamper Shield

ITEM	PRICE
MM15-TS	\$45

How to Orders

Specify quantity and the following information. Order related products separately.

MODEL	SIZE	FINISH
HEB	-1	BK-MM15
HEB Header Extension	1 1" x 1" 2 2" x 2" 3 3" x 3"	BK Black Anodized CL Clear Anodized
MODEL	FINISH	
DC-MM15	BK	
DC-MM15 Dress Cover for MM15	BK Black BP Brass Polished BS Brass Satin	
MODEL	SIZE	FINISH
SFP	-1/2	BK
SFP Stop Filler Plate	1/2" 3/8" 5/8"	BK Black Anodized CL Clear Anodized

Keypads & Card Readers

Securitron DK-12 Stand Alone Keypad

ITEM	DESCRIPTION	PRICE
DK-12	Digital Keypad System with Illuminated keys — Single Gang	\$201



Securitron DK-16 Keypad System

ITEM	DESCRIPTION	PRICE
DK-16	Keypad and Controller — Indoor, Single Gang	\$426
DK-16P	Keypad only — Indoor, Single Gang	\$211



Securitron DK-26 Keypad Systems

MODEL	DESCRIPTION	BK	SS
DK-26	Keypad and Controller — Narrow Stile	\$448	\$437
DK-26P	Keypad only — Narrow Stile	\$233	\$222



Securitron DK-37 Wiegand Keypads

MODEL	DESCRIPTION	BK	SS
DK-37W	Narrow Stile with Wiegand Output	\$240	\$229



How to Order

Specify quantity and the following information. Order related products separately.

MODEL SERIES	SPECIAL FEATURE	FINISH
DK-26	P	BK
DK-26 Keypad	P Keypad only	BK Black Anodized SS Stainless Steel

How to Order

Specify quantity and the following information. Order related products separately.

MODEL SERIES	OUTPUT	FINISH
DK-37	W	BK
DK-37 Keypad	W Wiegand Output	BK Black Anodized SS Stainless Steel

Securitron DK-38 Wiegand Keypads

MODEL	DESCRIPTION	SS
DK-38W	Single Gang with Wiegand Output	\$229



Accessories

ITEM	DESCRIPTION	PRICE
WBB	Wall Mounted, Weatherized, Single Gang Box	\$40
WCC	Wall Mounted, Weather Cover, Single Gang Box	\$55

Securitron R100 Aperio® Card Reader Factory Paired with Wiegand Hub

MODEL	DESCRIPTION	BLK
R100-IPS	Aperio Reader	\$499
R100H-IPS	Aperio Reader with Paired Hub	\$790



Accessories

ITEM	DESCRIPTION	PRICE
R100-DPK	Dress plate kit	\$30

How to Order

Specify quantity and the following information. Order related products separately.

SERIES	MODEL	CARD TECHNOLOGY	COLOR
R100	H	– IPS	– B
	(Blank) Non-Paired H Factory Paired with AH20 1:1 Wiegand Hub	IPS HID Prox®, Kantech ioProx, HID iCLASS®, HID iCLASS SE® (SIO-enabled), HID iCLASS® Seos™, HID MIFARE® SE, HID DESFire® EV1 SE, MIFARE Classic, MIFARE DESFire EV1, NFC-enabled mobile phones	B Black

*Kit includes integrated lock paired with Wiegand 1:1 wireless hub

Push Buttons & Egress Devices

Securitron XMS Request to Exit Motion Sensor

ITEM	DESCRIPTION	PRICE
XMS	Passive Infrared Request to Exit Device	\$241



Securitron EEB Emergency Exit Push Buttons

ITEM	DESCRIPTION	PRICE
EEB2	Momentary, SPST, Single Gang, Green/Red/Blue/Handicap, 30 Sec. Timer	\$152
EEB3N	Momentary, SPST, Narrow, SPST, Green/Red, 30 Sec. Timer	\$152



Accessories

ITEM	DESCRIPTION	PRICE
PB2-LK	2" Button, Illumination Kit for PB2E, PB5E, EEB2 Series Push Button	\$31
PB3-LK	Illumination Kit, Green/Red for PB3E/EEB3N Series	\$31
WBB	Wall Mounted, Weatherized, Single Gang Box	\$40
WCC	Wall Mounted, Weather Cover, Single Gang Box	\$55

How to Order *Specify quantity and the following information. Order related products separately.*

MODEL SERIES	LED LENS COLOR	MOUNTING METHOD
EEB	3	N
EEB Push Buttons	2 Green/ Red/ Handicap 3 Green/Red	(blank) Single Gang N Narrow Stile

NOTE: Not every combination above is possible. Please contact the factory if you need a combination of features not listed on this page.

Securitron PB Exit Push Buttons

ITEM	DESCRIPTION	PRICE
PB	1 1/2" button, Illuminated, Momentary, DPST, Single Gang, Green/Red Lens	\$168
PBA	1 1/2" button, Illuminated, Alternate, DPST, Single Gang, Green/Red Lens	\$168



Accessories

ITEM	DESCRIPTION	PRICE
WBB	Wall Mounted, Weatherized, Single Gang Box	\$40
WCC	Wall Mounted, Weather Cover, Single Gang Box	\$55

How to Order *Specify quantity and the following information. Order related products separately.*

MODEL SERIES	SWITCH TYPE
PB	A
PB Push Button	(blank) Momentary Switch A Alternate Switch

Securitron PB2 Exit Push Buttons

ITEM	DESCRIPTION	PRICE
PB2	2" Button, Illuminated, Momentary, Single Gang, Green/Red/Handicap	\$108
PB22	2" Button, Illuminated, Momentary, DPDT, Single Gang, Green/Red/Handicap	\$168
PB2E	2" Button, Non-Illuminated, Momentary, Single Gang, SPDT, Green/Red/Handicap	\$77

Accessories

ITEM	DESCRIPTION	PRICE
PB2-LK	2" Button, Illumination Kit for PB2E, PB5E, EEB2 Series Push Button	\$31
WBB	Wall Mounted, Weatherized, Single Gang Box	\$40
WCC	Wall Mounted, Weather Cover, Single Gang Box	\$55

How to Order Specify quantity and the following information. Order related products separately.

MODEL SERIES	ILLUMINATION	SWITCH PULL/THROW
PB2		2
PB2 Push Button	(blank) Illuminated E Non-Illuminated	(blank) Single Pole, Double Throw 2 Double Pole, Double Throw

NOTE: Not every combination above is possible. Please contact the factory if you need a combination of features not listed on this page.



Securitron PB3 Push Buttons

ITEM	DESCRIPTION	PRICE
PB3	3/4" Rectangle Button, Illuminated, Momentary, DPST/DPDT, Single Gang, Green/Red Lens	\$116
PB3A	3/4" Rectangle Button, Illuminated, Alternate, DPST/DPDT, Single Gang, Green/Red Lens	\$116
PB3E	3/4" Rectangle Button, Non-Illuminated, Momentary, DPST/DPDT, Single Gang, Green/Red Lens	\$86
PB3EA	3/4" Rectangle Button, Non-Illuminated, Alternate, DPST/DPDT, Single Gang, Green/Red Lens	\$86
PB3AN	3/4" Rectangle Button, Illuminated, Alternate, DPST/DPDT, Narrow, Green/Red Lens	\$116
PB3N	3/4" Rectangle Button, Illuminated, Momentary, DPST/DPDT, Narrow, Green/Red Lens	\$116
PB3EAN	3/4" Rectangle Button, Non-Illuminated, Alternate, DPST/DPDT, Narrow, Green/Red Lens	\$86
PB3EN	3/4" Rectangle Button, Non-Illuminated, Momentary, DPST/DPDT, Narrow, Green/Red Lens	\$86
PB3EAR	3/4" Rectangle Button, Non-Illuminated, Remote, Alternate, DPST/DPDT, Surface Mount Green/Red Lens	\$86
PB3ER	3/4" Rectangle Button, Non-Illuminated, Remote, Momentary, DPST/DPDT, Surface Mount Green/Red Lens	\$86

Accessories

ITEM	DESCRIPTION	PRICE
PB3-LK	Illumination Kit, Green/Red for PB3E/EEB3N Series	\$31
WBB	Wall Mounted, Weatherized, Single Gang Box	\$40
WCC	Wall Mounted, Weather Cover, Single Gang Box	\$55

How to Order Specify quantity and the following information. Order related products separately.

MODEL SERIES	ILLUMINATION	SWITCH TYPE	MOUNTING METHOD
PB3	E	A	N
PB3 Push Button	(blank) Illuminated E Non-Illuminated	(blank) Momentary Switch A Alternate Switch	(blank) Single Gang 2 Double Gang N Narrow Stile R Remote, Surface Mount



Securitron PB4L Push Buttons

ITEM	DESCRIPTION	PRICE
PB4L-2	1/2" Round Button, Green Illuminated Halo, Momentary, DPDT, Single Gang, Green/Red LED	\$144
PB4LA-2	1/2" Round Button, Green Illuminated Halo, Alternate, DPDT, Single Gang, Green/Red LED	\$144
PB4LAN-2	1/2" Round Button, Green Illuminated Halo, Alternate, DPDT, Narrow Stile, Green/Red LED	\$144
PB4LN-2	1/2" Round Button, Green Illuminated Halo, Momentary, DPDT, Narrow Stile, Green/Red LED	\$144



How to Order Specify quantity and the following information. Order related products separately.

MODEL SERIES	SWITCH TYPE	MOUNTING METHOD	SWITCH PULL/THROW
PB4L	A	N	- 2
PB4L Push Button	(blank) Momentary Switch A Alternate Switch	(blank) Single Gang N Narrow Stile	2 Double Pole, Double Throw Switch

Securitron PB5 Push Buttons

ITEM	DESCRIPTION	PRICE
PB5	2" Round Button, Illuminated, Momentary, SPDT, Single Gang, Green/Red/Handicap	\$132
PB5E	2" Round Button, Non-Illuminated, Momentary, SPDT, Single Gang, Green/Red/Handicap	\$101



Accessories

ITEM	DESCRIPTION	PRICE
PB2-LK	2" Button, Illumination Kit for PB2E, PB5E, EEB2, Series Push Button	\$31
WBB	Wall Mounted, Weatherized, Single Gang Box	\$40
WCC	Wall Mounted, Weather Cover, Single Gang Box	\$55

How to Order Specify quantity and the following information. Order related products separately.

MODEL SERIES	ILLUMINATION
PB5	E
PB5 Push Button	(blank) Illuminated E Non-Illuminated

Securitron MK Key Switches

ITEM	DESCRIPTION	PRICE
MK	Momentary, SPDT, Single Gang, Green/Red LED	\$145
MK2	Momentary, DPDT, Single Gang, Green/Red LED	\$170
MKA	Alternate, SPDT, Single Gang, Green/Red LED	\$145
MKA2	Alternate, DPDT, Single Gang, Green/Red LED	\$170
MKAN	Alternate, SPDT, Narrow, Green/Red LED	\$145
MKAN2	Alternate, DPDT, Narrow, Green/Red LED	\$170
MKN	Momentary, SPDT, Narrow, Green/Red LED	\$145
MKN2	Momentary, DPDT, Narrow, Green/Red LED	\$170
MKPZ	Momentary, SPDT, Double Gang, Green/Red LED, Audible	\$219
MKAPZ	Alternate, SPDT, Double Gang, Green/Red LED, Audible	\$219



Accessories

ITEM	DESCRIPTION	PRICE
MKC-KD	Mortise Cylinder for MK Series – Keyed Differently	\$65
MKC-KA	Mortise Cylinder for MK Series – Keyed Alike	\$65
MKS	Momentary, Switch Only	\$37
MKS2	DPDT Momentary, Switch Only	\$62
MKSA	Alternate, Switch Only	\$37
MKSA2	DPDT Alternate, Switch Only	\$62

How to Order

Specify quantity and the following information. Order related products separately.

MODEL SERIES	SWITCH TYPE	MOUNTING METHOD	SPECIAL FEATURE
MK	A	N	2
MK Mortise Key Switch	(blank) Momentary Switch A Alternate Switch	(blank) Switch Gang P Double Gang N Narrow Gang	Z Audible 2 DPDT—Double Pole, Double Throw

Note: Not every combination above is possible. Please contact the factory if you need a combination of features not listed on this page.

Securitron KP-1 Tubular Key Switches

ITEM	DESCRIPTION	PRICE
KP1	Momentary Switch	\$183
KP1A	Alternate Switch	\$183



How to Order *Specify quantity and the following information. Order related products separately.*

MODEL SERIES	SWITCH TYPE
KP1	A
KP1 Tubular Key Switch	(blank) Momentary Switch A Alternate Switch

Securitron WSS Wave Sense Switch

ITEM	DESCRIPTION	PRICE
WSS-W1	White Single Gang Faceplate	\$407
WSS-W2	White Double Gang Faceplate	\$407



Accessories

ITEM	DESCRIPTION	PRICE
WBB	Wall Mounted, Weatherized, Single Gang Box	\$40
WCC	Wall Mounted, Weather Cover, Single Gang Box	\$55

How to Order *Specify quantity and the following information. Order related products separately.*

MODEL SERIES	FINISH	MOUNTING METHOD
WSS	-W	1
WSS Wave Sense Switch	W White	1 Single Gang 2 Double Gang

Securitron SP-1 Capacitive Button

ITEM	DESCRIPTION	PRICE
SP-1	Touch Sense Plate	\$200
SP-1L	Label Touch Plate [SP-1]	\$8
SP-1LH	Label Touch Plate [SP-1] — Handicap Decal	\$8



How to Order *Specify quantity and the following information. Order related products separately.*

MODEL SERIES	LABEL
SP-1	
SP-1 Touch Sense Plate, Clear Anodized	L Touch To Exit LH Handicap

Securitron DSB Dual Sense® Egress Bar

MODEL	DESCRIPTION	BK	CL
DSB	Non-Illuminated, 36" (Standard), 42", or 48"	\$535	\$525
DSB-xxI	Illuminated, 36" (Standard), 42", or 48"	\$709	\$699
EL-DSB	ElectroLynx, Illuminated, 36" Only	\$570	\$564



Accessories

ITEM	DESCRIPTION	PRICE
DSB-TDM	Through Door Mounting Kit for DSB	\$16
TCP-CL	Touch Bar Cover Plates — Set of 2, Clear Anodized	\$95
TCP-BK	Touch Bar Cover Plates — Set of 2, Black Anodized	\$95

How to Order *Specify quantity and the following information. Order related products separately.*

CONNECTOR STYLE	MODEL SERIES	FINISH	ILLUMINATION	BAR LENGTH
EL	– DSB	– CL	I	42
(blank) No Connectors	DSB Dual Sense Bar	BK Black Anodized	(blank) Non Illuminated	(blank) 36" Standard Unit
EL ElectroLynx Connectors		CL Clear Anodized	I Illuminated	42 42" Length
				48 48" Length

Note: Not every combination above is possible. Please contact the factory if you need a combination of features not listed on this page.

Securitron TSB Touch Sense® Egress Bar

MODEL	DESCRIPTION	BK	CL
DTSB	Dummy with End Caps & Fasteners — 36" (Standard), 42", or 48"	\$262	\$238
EL-TSB	ElectroLynx — 36" (Standard), 42", or 48"	\$506	\$484
TSB	36" (Standard), 42", or 48"	\$487	\$464
TSB-xxT	Trailing Edge Timer [3 Sec.] — BK 36" only, CL 36" or 42"	\$487	\$464



Accessories

ITEM	DESCRIPTION	PRICE
TSB-TDM	Through Door Mounting Kit for TSB	\$16
TCP-BK	Touch Bar Cover Plates — Set of 2, Black Anodized	\$95
TCP-CL	Touch Bar Cover Plates — Set of 2, Clear Anodized	\$95

How to Order *Specify quantity and the following information. Order related products separately.*

CONNECTOR STYLE	MODEL SERIES	FINISH	ILLUMINATION	BAR LENGTH
EL	– TSB	– CL	T	– 42
(blank) No Connectors	TSB Touch Sense Bar	BK Black Anodized	T Trailing Edge Timer	(blank) 36" Standard Unit
EL ElectroLynx Connectors		CL Clear Anodized		42"
				48"

Note: Not every combination above is possible. Please contact the factory if you need a combination of features not listed on this page.

Securitron EMB Electromechanical Egress Bar

MODEL	DESCRIPTION	BK	CL
EMB	36" (Standard), 42", or 48"	\$295	\$282
WEMB	Weather Resistant, 36" (Standard), 42", or 48"	\$324	\$312



Accessories

MODEL	DESCRIPTION	BK	CL
TCP	Touch Bar Cover Plates — Set of 2	\$95	\$95

How to Order Specify quantity and the following information. Order related products separately.

MODEL SERIES	FINISH	BAR LENGTH
EMB	- CL	- 48
EMB Electromechanical Bar	BK Black Anodized	(blank) 36" Standard Unit
WEMB Weather Resistant Electromechanical Bar	CL Clear Anodized	42"
		48"

Securitron TSH Touch Sense® Handle

MODEL	DESCRIPTION	BK	CL
EL-TSH	ElectroLynx — Push/Pull	\$506	\$506
TSH	Push/Pull	\$477	\$477

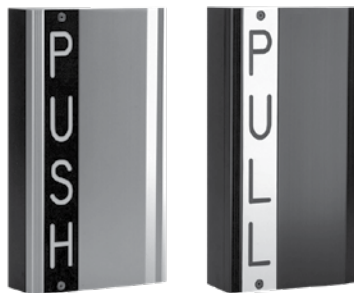


How to Order Specify quantity and the following information. Order related products separately.

CONNECTOR STYLE	MODEL SERIES	FINISH
EL	- TSH	- CL
(blank) No Connectors	TSH Touch Sense Handle	BK Black Anodized
EL ElectroLynx Connectors		CL Clear Anodized

Securitron EMH Electromechanical Handle

MODEL	DESCRIPTION	BK	CL
EL-EMH	ElectroLynx — Push/Pull		\$494
EMH	Push/Pull	\$471	\$471



How to Order

Specify quantity and the following information. Order related products separately.

CONNECTOR STYLE	MODEL SERIES	FINISH
EL	- EMH	- CL
(blank) No Connectors	EMH Electromechanical Handle	BK Black Anodized
EL ElectroLynx Connectors		CL Clear Anodized

Power

Securitron BPS Linear Power Supplies

ITEM	DESCRIPTION	PRICE
BPS-12/24-1	Dual Voltage 12/24 VDC, 1 Amp	\$312
BPS-12-1	12 VDC, 1 Amp	\$252
BPS-12-3	12 VDC, 3 Amp	\$490
BPS-12-45	12 VDC, 4.5 Amp	\$791
BPS-12-6	12 VDC, 6 Amp	\$877
BPS-12-9	12 VDC, 9 Amp	\$1060
BPS-12-15	12 VDC, 15 Amp	\$1305
BPS-24-1	24 VDC, 1 Amp	\$252
BPS-24-2	24 VDC, 2 Amp	\$490
BPS-24-3	24 VDC, 3 Amp	\$740
BPS-24-4	24 VDC, 4 Amp	\$877
BPS-24-6	24 VDC, 6 Amp	\$1060
BPS-24-10	24 VDC, 10 Amp	\$1305
BPSM-12-6	12 VDC, Status Monitor, 6 Amp	\$928
BPSM-12-9	12 VDC, Status Monitor, 9 Amp	\$1111
BPSM-12-15	12 VDC, Status Monitor, 15 Amp	\$1354
BPSM-24-4	24 VDC, Status Monitor, 4 Amp	\$928
BPSM-24-6	24 VDC, Status Monitor, 6 Amp	\$1111
BPSM-24-10	24 VDC, Status Monitor, 10 Amp	\$1354



How to Order

Specify quantity and the following information. Order related products separately.

MODEL SERIES	SWITCH TYPE	VOLTAGE	OUTPUT POWER
BPS	M	-24	-X
BPS	(blank) No Monitoring M PSM Monitoring	12 12 VDC 24 24 VDC	X Output in Amps

Securitron AQL Series Power Supplies with E1 Enclosures

ITEM	DESCRIPTION	PRICE
AQL4-E1	4 Amp at 12 VDC or 3 Amp at 24 VDC Power Supply with E1 Enclosure	\$284
AQL6-E1	6 Amp, Dual Voltage Power Supply with E1 Enclosure	\$347
AQL102-E1	10 Amp at 12 VDC, Single Voltage Power Supply with E1 Enclosure	\$376
AQL104-E1	10 Amp at 24 VDC, Single Voltage Power Supply with E1 Enclosure	\$403

Securitron AQL Series Power Supplies Boards Only

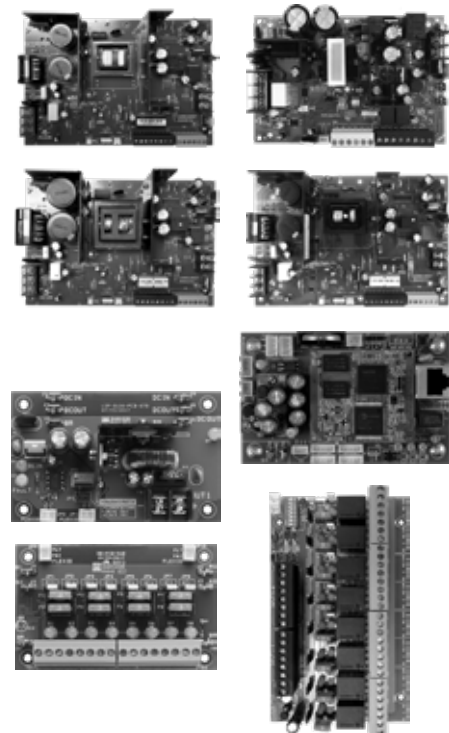
ITEM	DESCRIPTION	PRICE
AQL4	4 Amp at 12 VDC or 3 Amp at 24 VDC, Dual Voltage Power Supply Board Only	\$211
AQL6	6 Amp, Dual Voltage Power Supply Only	\$258
AQL102	10 Amp at 12 VDC, Single Voltage Power Supply Only	\$287
AQL104	10 Amp at 24 VDC, Single Voltage Power Supply Only	\$313

Securitron AQL Series Modules

ITEM	DESCRIPTION	PRICE
B100	Secondary Voltage Module	\$74
D8	3 A ATO Fused Power Distribution Module	\$50
D8P	2.5 A Polyswitch Fused Power Distribution Module	\$50
R8	Power Relay Module	\$103
NL4	Netlink™ Power Monitoring Module	\$411

Securitron AQL Series Common Configurations

ITEM	DESCRIPTION	PRICE
AQL4-R8E1	4 Amp at 12 VDC or 3 Amp at 24 VDC Power Supply, Power Relay Module with E1 Enclosure	\$387
AQL6-B100R8E1	6 Amp, Dual Voltage Power Supply, Secondary Voltage Module, Power Relay Module with E1 Enclosure	\$524
AQL102-2D8E1	10 Amp at 12 VDC, Single Voltage Power Supply, (2) 3 Amp ATO Fused Power Distribution Modules with E1 Enclosure	\$476
AQL104-B1002D8E1	10 Amp at 24 VDC, Single Voltage Power Supply, Secondary Voltage Module, (2) 3 Amp ATO Fused Power Distribution Module with E1 Enclosure	\$576



Models

MODELS	AMPERAGE	RATED VOLTAGE	INPUT VOLTAGE	TYPICAL OUTPUT VOLTAGE	MULTI-VOLTAGE READY	CLASS 2 OUTPUTS
Securitron AQL4*	4	12 VDC	120/230 VAC	12.5 or 25 VDC	Yes	Yes
	3	24 VDC				
Securitron AQL6	6	12 or 24 VDC	120/230 VAC	12.5 or 25 VDC	Yes	with PTC distribution boards
Securitron AQL102	10	12 VDC	120/230 VAC	12.5 VDC	Yes**	with PTC distribution boards
Securitron AQL104	10	24 VDC	120/230 VAC	25 VDC	Yes	with PTC distribution boards

*Securitron AQL4 is field selectable. **Multi-voltage of 5 to 9 VDC only

How to Order Specify quantity and the following information. Order related products separately.

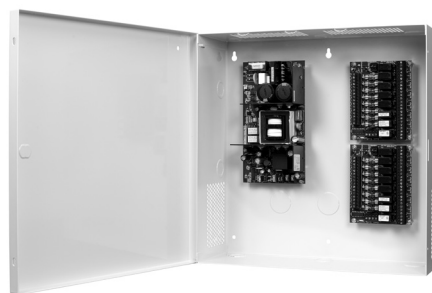
POWER SUPPLY MODULE	SECONDARY VOLTAGE MODULE	DISTRIBUTION MODULE	D8 FUSE STYLE	RELAY MODULE	NETLINK MODULE	ENCLOSURE
AQL4	-B100	2D8	P	R8	NL4	E1
AQL4	(blank)	(blank)	(blank) 3 A ATM Fuse	(blank)	(blank)	(blank) Module Only
AQL6	B100	D8	P 2.5 A PTC Polyswitch	R8	NL4	E1
AQL102		2D8		2R8		
AQL104		3D8		3R8		
		4D8				
		5D8				
		6D8				

AQL4 in an E1 enclosure has six module spaces where B100, NL4 and D8/D8P each take up one module space. R8 takes up two module spaces.

AQL6, AQL102 and AQL104 in an E1 enclosure has four module spaces where B100, NL4 and D8/D8P each take up one module space. R8 takes up two module spaces.

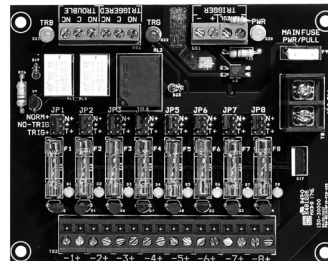
Securitron AQD & AQS Series Power Supplies with Enclosures

ITEM	DESCRIPTION	PRICE
AQD1	1 Amp, Dual Voltage Power Supply with enclosure	\$191
AQD2	2 Amp, Dual Voltage Power Supply with enclosure	\$220
AQD4	4 Amp, Dual Voltage Power Supply with enclosure	\$260
AQD6	6 Amp, Dual Voltage Power Supply with enclosure	\$320
AQS1210	10 Amp, 12 VDC Power Supply with enclosure	\$360
AQS1216	16 Amp, 12 VDC Power Supply with enclosure	\$391
AQS2410	10 Amp, 24 VDC Power Supply with enclosure	\$391



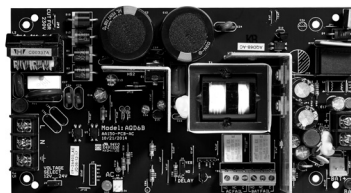
Securitron AQD & AQS Series Distribution Boards

ITEM	DESCRIPTION	PRICE
PDB-1R	Fire Trigger / Relay Interface Board	\$39
PDB-4F1	4 Glass Fused Outputs, 1 Amp each	\$39
PDB-4F2	4 Glass Fused Outputs, 2 Amp each	\$39
PDB-4C1	4 PTC Outputs, 1 Amp each	\$39
PDB-4C2	4 PTC Outputs, 2 Amp each	\$39
PDB-8F1	8 Glass Fused Outputs, 1 Amp each	\$44
PDB-8F2	8 Glass Fused Outputs, 2 Amp each	\$44
PDB-8C1	8 PTC Outputs, 1 Amp each	\$44
PDB-8C2	8 PTC Outputs, 2 Amp each	\$44
PDB-8F8R1	8 Glass Fused Outputs with Relays, Fire Trigger, 1 Amp each	\$110
PDB-8F8R2	8 Glass Fused Outputs with Relays, Fire Trigger, 2 Amp each	\$110
PDB-8C8R1	8 PTC Outputs with Relays, Fire Trigger, 1 Amp each	\$110
PDB-8C8R2	8 PTC Outputs with Relays, Fire Trigger, 2 Amp each	\$110
PDB-8C1R1	8 PTC Outputs, Fire Trigger/Relay, 1 Amp each	\$90
PDB-8C1R2	8 PTC Outputs, Fire Trigger/Relay, 2 Amp each	\$90
PDB-8F1R1	8 Glass Fuse Outputs, Fire Trigger/Relay, 1 Amp each	\$90
PDB-8F1R2	8 Glass Fuse Outputs, Fire Trigger/Relay, 2 Amp each	\$90



Securitron AQD & AQS Series Power Supply Boards Only

ITEM	DESCRIPTION	PRICE
AQD1B	1 Amp, Dual Voltage Power Supply Board Only	\$120
AQD2B	2 Amp, Dual Voltage Power Supply Board Only	\$140
AQD4B	4 Amp, Dual Voltage Power Supply Board Only	\$170
AQD6B	6 Amp, Dual Voltage Power Supply Board Only	\$220
AQS1210B	10 Amp, 12 VDC Power Supply Board Only	\$250
AQS1216B	16 Amp, 12 VDC Power Supply Board Only	\$275
AQS2410B	10 Amp, 24 VDC Power Supply Board Only	\$275



How to Order Specify quantity and the following information. Order related products separately.

MODEL SERIES	OUTPUT TYPE	VOLTAGE	OUTPUT POWER	ENCLOSURE STYLE	NUMBER OF OUTPUTS	FUSE TYPE	NUMBER OF RELAYS	RELAYS	FUSE SIZE
AQ	D		6	-	8	F	8	R	2
AQ	D Dual Voltage*	(blank) Dual Voltage*	1 *	- In Enclosure	(blank) One Output, No Distribution Board				
	S Single Voltage**	12 12 VDC**	2 *	B Circuit Board Only	4	F Glass + Fuses	1	R Relays	1 1 Amp
			4 *		8	C PTC + Polyswitch	2		2 2 Amp
			6 *		12		8		
			10 **		16		9		
			16 **				16		

*Dual Voltage Option Only. **Single Voltage Option Only. † Fuse type and size must be the same for both distribution boards for standard ordering. For custom configurations, please contact the factory at 800.626.7590.

Securitron EcoPower® Sustainable Power Supply

ITEM	DESCRIPTION	PRICE
EPS-05	0.5 Amp, 2 Outputs for Low Power Locks	\$303
EPS-05B	Power Supply Board Only	\$147

Accessories

ITEM	DESCRIPTION	PRICE
B-12-08	Battery — 12 VDC, 0.8 Amp	\$67

How to Order Specify quantity and the following information. Order related products separately.

MODEL SERIES	OUTPUT POWER	OPTION(S)
EPS	- 05	B
EPS	05 0.5 Amps	(blank) PS, enclosure, battery B Circuit Board Only

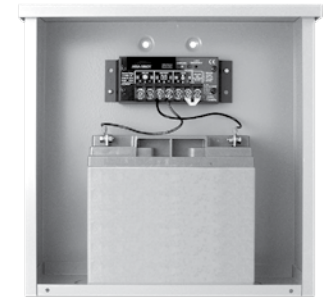


Securitron BPSS Solar Power Supplies

ITEM	DESCRIPTION	PRICE
BPSS-10	12 VDC with 10 W Solar Panel and 9 Ah Battery	\$836
BPSS-20	12 VDC with 20 W Solar Panel and 18 Ah Battery	\$947

BPSS Accessories

ITEM	DESCRIPTION	PRICE
PMK-3	Mounting Kit 3 in Pole for CCM Nema Enclosure	\$124
SPK	Solar Panel Kit — 20 W	\$806
SWK	High Wind Kit for 20 W Solar Panel	\$158
B-12-9	Battery — 12 VDC, 9 Ah	\$159
B-12-18	Battery — 12 VDC, 18 Ah	\$206



How to Order Specify quantity and the following information. Order related products separately.

MODEL SERIES	SOLAR POWER OUTPUT
EPS	- 10
BPSS Solar Power Supply	10 10 Watts 20 20 Watts

Securitron AQE Single Port Injector Single-Port PoE

ITEM	DESCRIPTION	PRICE
AQE15	MidSpan Injector, 1.4 Amp, Dual Voltage	\$110
AQE30	MidSpan Injector, 2.6 Amp, Dual Voltage	\$170
AQE30E	MidSpan Extractor, 0.6 Amp	\$170

How to Order Specify quantity and the following information. Order related products separately.

MODEL SERIES	POWER	FUNCTION	MOUNTING STYLE
AQE	15	(blank)	R
AQE PoE	15 30	(blank) PoE Injector E PoE Extractor	(blank) Single Port R Rack Mount Multi-Port

Items can only be ordered as listed above.



Securitron AQE Multi-Port Rack Mount PoE

ITEM	DESCRIPTION	PRICE
AQE250R	256 W, 16 Port Rack Mount Injector	\$2280
AQE500R	540 W, 16 Port Rack Mount Injector	\$2715



How to Order Specify quantity and the following information. Order related products separately.

MODEL SERIES	POWER	FUNCTION	MOUNTING STYLE
AQE	500		R
AQE PoE	250	(blank) PoE Injector	(blank) Single Port
	500	E PoE Extractor	R Rack Mount Multi-Port

Items can only be ordered as listed above.

Securitron PSP PSP Plug-In Power Supplies

ITEM	DESCRIPTION	PRICE
PSP-12	12 VDC, 700 mA	\$50
PSP-24	24 VDC, 350 mA	\$50
PSP-12-3	12 VDC, 3 Amp	\$99
PSP-24-1.5	24 VDC, 1.5 Amp	\$99



Additional Power Products

ITEM	DESCRIPTION	PRICE
BR-4	Bridge Rectifier — 4 Amp	\$35
B-12-08	Battery — 12 VDC, 0.8 Amp	\$67
B-12-5	Battery — 12 VDC, 5 Amp	\$56
B-24-5	Battery — 24 VDC, 5 Amp	\$115
CKL	Cabinet Key Lock	\$27
CCB-8-12	Central Control Board — 12 VDC, 8 Fused Outputs	\$119
CCB-8-24	Central Control Board — 24 VDC, 8 Fused Outputs	\$119
CFAR-12	Fire Alert Reset Control — Canada — 12 VDC, Board Only	\$86
CFAR-24	Fire Alert Reset Control — Canada — 24 VDC, Board Only	\$87
FAR-12	Fire Alert Reset Control — 12 VDC	\$312
FAR-24	Fire Alert Reset Control — 24 VDC	\$312
PSM-12	Power Supply Monitor — 12 VDC	\$729
PSM-24	Power Supply Monitor — 24 VDC	\$729

Power Transfers

Securitron ICPT Inductive Coupling Power Transfer

ITEM	DESCRIPTION	PRICE
ICPT	Power Jump	\$302



Securitron CEPT Concealed Electrical Power Transfers

MODEL	DESCRIPTION	630	606	612	613
CEPT-10	10 Wire	\$411	\$502	\$502	\$502
EL-CEPT	Electrolynx® Connectors	\$492	\$521	\$521	\$557
CEPT-C5E	CAT-5E	\$459	\$552	\$552	\$552
CEPT-NW	No Wires	\$411			



How to Order *Specify quantity and the following information. Order related products separately.*

WIRE CONNECTORS	MODEL	NUMBER OF WIRES	FINISH
EL	– CEPT	– C5E	– 10B
(blank) No Connectors	CEPT Concealed	(blank) 12 Wires (for EL CEPT only)	(blank) 630 Satin Stainless Steel
EL Electrolynx® Connectors		10 10 Wires	04 606 Satin Brass
		C5E 9 Wires	10 612 Satin Bronze
		NW	10B 613 Bronze Toned

Securitron SEPT Square-Cut Electrical Power Transfers

ITEM	DESCRIPTION	PRICE
SEPT	Cut Standard Version	\$81
SEPT-10	10 Wire	\$115
SEPT-C5E	CAT-5E Compatible	\$110
EL-SEPT	Electrolynx® Connectors	\$106



How to Order *Specify quantity and the following information. Order related products separately.*

WIRE CONNECTORS	MODEL	NUMBER OF WIRES
EL	– SEPT	– C5E
(blank) No Connectors	SEPT Square-Cut	(blank) 12 Wires
EL Electrolynx® Connectors		10 10 Wires
		C5E 9 Wires

Securitron EPT Electrical Power Transfers

ITEM	DESCRIPTION	PRICE
EPT	10" Cord, Standard Swing	\$72
EPTL	18" Cord, Standard Swing	\$96
EPT-SC	10" Cord, Swing Clear	\$108
EL-EPT	ElectroLynx® 10" Cord, Standard Swing	\$111
EL-EPTL	ElectroLynx® 18" Cord, Standard Swing	\$134
EL-EPT-SC	ElectroLynx® 10" Cord, Swing Clear	\$146

How to Order *Specify quantity and the following information. Order related products separately.*

WIRE CONNECTIONS	SHAPE	DOOR SWING
EL	- EPT	- SC
(blank) No Connectors	EPT 10" Cord	(blank) Standard Swing
EL ElectroLynx® Connectors	EPTL 18" Cord	SC Swing Clear / Pivots
		CSE 9 Wires

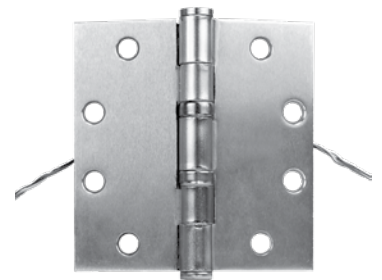


Securitron EH Electric Hinges

ITEM	DESCRIPTION	PRICE
EH-40	6 Wire [4.5" x 4.0"]	\$295
EH-45	6 Wire [4.5" x 4.5"]	\$295

How to Order *Specify quantity and the following information. Order related products separately.*

MODEL SERIES	LENGTH
EH	- 45
EH Electric Hinge	40 4" Length
	45 4.5" Length



Securitron TSB-C Door Cords

ITEM	DESCRIPTION	PRICE
TSB-C	With Caps, Gray/Black, 18"	\$37
TSB-CXL	With Caps, Gray/Black, 36"	\$46

How to Order *Specify quantity and the following information. Order related products separately.*

MODEL SERIES	SIZE
TSB-C	XL
TSB-C Door Cord	(blank) 18"
	XL 36"



Accessories

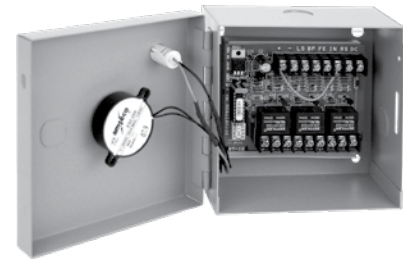
Securitron TM-2, TM-9, DT-7 and PZ1 Timers & Alarms

ITEM	DESCRIPTION	PRICE
TM-2	Multi-Function Timer, 1-255 seconds	\$155
TM-9	Time Mate Timer, 2-36 Seconds	\$79
DT-7	Digital Timer, 7 day	\$250
PZ1	Piezo on Keyplate — Single Gang	\$75



Securitron BA-DPA Drop Prop Alarm Monitoring

ITEM	DESCRIPTION	PRICE
BA-DPA-24	24 VDC With Boxed Alarm	\$273
BA-DPA-12	12 VDC with Boxed Alarm	\$273



How to Order *Specify quantity and the following information. Order related products separately.*

MODEL SERIES	VOLTAGE
BA-DPA	- 24
BA-DPA Door Prop Alarm Timer	12 12 VDC
	24 24 VDC

Securitron DPS Door Position Switches

MODEL	DESCRIPTION	BK	GY	W
DPS-M	For Metal Doors	\$32	\$32	\$32
DPS-W	For Wood Doors	\$24	\$24	\$24



Securitron MSS Magnetic Switch/High Security

ITEM	DESCRIPTION	PRICE
MSS-1	Magnetic High Security Switch	\$236
MSS-1-RT	Remote Test	\$277
MSS-1C	Concealed	\$236
MSS-1C-RT	Concealed, Remote Test	\$277
MSS-1G	Surface Mount	\$236
MSS-1G-RT	Surface Mount, Remote Test	\$277



How to Order *Specify quantity and the following information. Order related products separately.*

MODEL SERIES	MOUNTING METHOD	SPECIAL FEATURE
MSS-1	C	- RT
MSS Magnetic Security Switch	C Concealed G Surface Mount	RT Remote Test

NOTE: No other combinations of model numbers can be ordered other than what is listed.

Securitron LM Latch Monitors

ITEM	DESCRIPTION	PRICE
LML-1	ANSI, 4-7/8, Strike, SPDT, 3 Amp	\$126
LML-2	ANSI, 4-7/8, Strike, SPDT, 3 Amp, Dual Switches	\$173
LMS-1	ANSI, 2-3/4", Strike, SPDT, 3 Amp	\$126

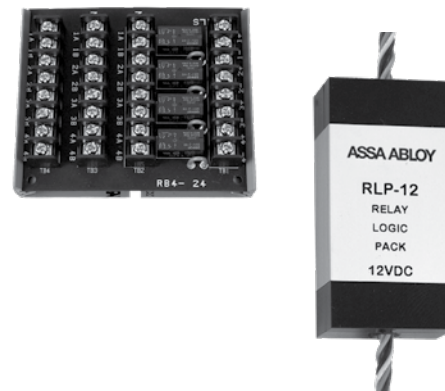


How to Order *Specify quantity and the following information. Order related products separately.*

MODEL SERIES	STRIKE SIZE	NUMBER OF SWITCHES
LM	S	-2
LM Latch Monitor	L ANSI 4-7/8" Strike S ANSI 2-3/4" Strike	1 Single Switch 2 Dual Switches

Securitron RLP, RB-4 Relay Logic Packs & Boards

ITEM	DESCRIPTION	PRICE
RLP-12	Relay Logic Pack — 12 VDC	\$63
RLP-24	Relay Logic Pack — 24 VDC	\$63
RB-4-12	Relay Board — 12 VDC	\$124
RB-4-24	Relay Board — 24 VDC	\$124



How to Order *Specify quantity and the following information. Order related products separately.*

MODEL SERIES	VOLTAGE
RLP	- 12
RLP Relay Logic Pack	12 12 VDC
RB-4 Relay Board	24 24 VDC

ASSA ABLOY

Electronic Security Hardware Warranties

In 1999 Securitron introduced the first no-fault, no questions asked warranty to the industry, MagnaCare®. We believe that the best products in the industry should be supported by our commitment to deliver the highest quality products and services. ASSA ABLOY Electronic Security Hardware proudly extends the most comprehensive no-fault, no questions asked warranty coverage to all of our products and solutions. This is our expectation and commitment to you — our valued customer.



MagnaCare Warranty

MagnaCare Warranty

Duration: Lifetime

Condition: Any reason, including, but not limited to, installation error, vandalism or force majeure.

Replacement: Replacement product or equivalent shipped at ASSA ABLOY Electronic Security Hardware expense via next day air freight in most cases.

Products Covered:

- Electromagnetic and Specialty Locks
- Power Supplies (excluding BPSS) and Power Transfers
- Push Buttons, Keypads, Keyswitches and Egress Devices



SecuriCare Warranty

SecuriCare 10-year Warranty

Duration: Ten years from date of shipment

Condition: Any reason including, but not limited to, installation error, vandalism or force majeure

Replacement: Replacement product or equivalent shipped at ASSA ABLOY Electronic Security Hardware expense via next day air freight in most cases.

Products Covered:

- HES 1500, 1600 Electric Strikes
- When installed with a HES Smart PAC III, the following electric strikes are upgraded to the 10-year warranty:
 - » HES 1006, 4500, 5000, 5200, 7500, 8000, 8300, 8500, 9400, 9500, 9600, 9700, 9800, HES Folger Adam 310, 712, 732, 742 Electric Strikes
 - » Integrated Wiegand Electric Strikes



SecuriCare Warranty

SecuriCare 5-year Warranty

Duration: Five years from date of shipment

Condition: Any reason including, but not limited to, installation error, vandalism or force majeure.

Replacement: Replacement product or equivalent shipped at ASSA ABLOY Electronic Security Hardware's expense via next day air freight in most cases.

Products Covered:

- HES 1006, 4500, 5000, 5200, 7500, 8000, 8300, 8500, 9400, 9500, 9600, 9700, 9800, HES Folger Adam 310, 712, 732, 742 Electric Strikes
- Integrated Wiegand Electric Strikes
- Securitron MUNL, UNL Electric Strikes



SecuriCare Warranty

SecuriCare 3-year Warranty

Duration: Three years from date of shipment

Condition: Any reason, including but not limited to, installation error, vandalism or force majeure

Replacement: Replacement product or equivalent shipped at ASSA ABLOY Electronic Security Hardware's expense via next day air freight in most cases.

Products Covered:

- Aperio® Wireless Products K100, KS100, R100
- HES 610, 660, K20, KP20 Cabinet Locks
- Integrated Wiegand Cabinet Locks HES K200, KS200
- BPSS Solar Power Supplies
- Accessories

ASSA ABLOY Electronic Security Hardware Warranties apply to products shipped on or before January 1, 2018. Check your individual product to determine warranty coverage. Batteries and consumables are not covered by ASSA ABLOY Electronic Security Hardware Warranty programs. Replacement products, at ASSA ABLOY Electronic Security Hardware's sole option, may be the identical item or a unit which serves as a functional replacement. If the customer has an account with ASSA ABLOY Electronic Security Hardware or a valid credit card, the customer may order an advance replacement product, whereby ASSA ABLOY Electronic Security Hardware will charge the customer's account for the price of the product plus next day air freight, and will credit back to the customer the full amount of the charge, including outbound freight, upon ASSA ABLOY Electronic Security Hardware's receipt of the original product from the customer. ASSA ABLOY Electronic Security Hardware's sole and exclusive liability, and customer's sole remedy, is limited to the replacement of the ASSA ABLOY Electronic Security Hardware product when delivered to ASSA ABLOY Electronic Security Hardware's facility (freight and insurance charges prepaid by customer).

ASSA ABLOY

Electronic Security Hardware Terms & Conditions

PRICES: All prices are subject to change without notice. Prices listed on assaabloyesh.com will serve as the most current list price. All shipments will be made at prices in effect at the time of shipment. The customer shall be responsible for payment of all applicable sales and/or use taxes and freight costs.

MINIMUM ORDER: Minimum product charge per invoice is \$150.00 USD.

PAYMENT TERMS: Net thirty (30) days from date of invoice. Interest at the rate of up to 1-1/2% per month may be charged on all past due accounts. An order received on an account which has not been paid within 45 days of the date of invoice may not be processed until the account is current. Custom orders may require a deposit.

DELIVERY TERMS: All prices are Ex-works factory. Purchaser assumes the risk of loss or damage to the goods while in transit from the point of shipment. ASSA ABLOY Electronic Security Hardware reserves the right to make delivery in installments. Installments shall be separately invoiced and paid for when due. Delay in delivery of an installment shall not relieve the purchaser of its obligation to accept remaining deliveries.

SHORTAGE: Any claim for shortages must be made to ASSA ABLOY Electronic Security Hardware in writing within one (1) week of receipt of merchandise.

WARRANTY RETURNS: A Customer Care Form (CCF) for defective product must be obtained from ASSA ABLOY Electronic Security Hardware before any merchandise can be returned. CCF's are valid for sixty (60) days from date of issuance. Goods returned under the terms of MagnaCare® and SecuriCare Warranties may require a copy of the original invoice.

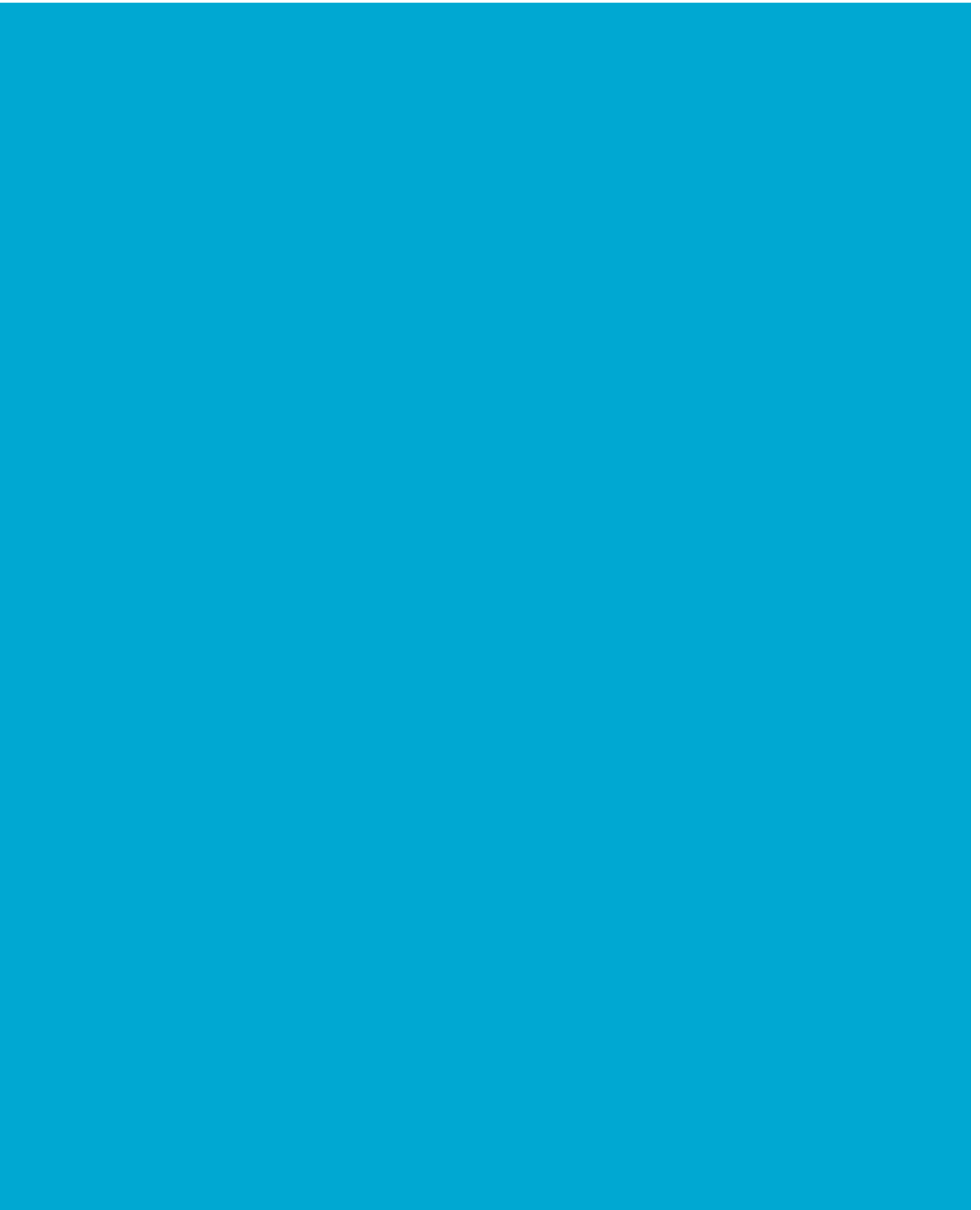
RETURNS: A Customer Care Form (CCF) must be obtained from ASSA ABLOY Electronic Security Hardware before any merchandise can be returned. CCF's are valid for sixty (60) days from date of issuance. Items that are not factory sealed, or that are returned later than ninety (90) days from the date of receipt are subject to a restocking charge plus an additional charge for any damage.

CANCELLATIONS: Any order may be subject to a 5% cancellation charge for catalog items. Cancellation of non-catalog or custom items will be subject to a 20% cancellation charge plus all costs (both direct and indirect) incurred by manufacturing at the point of cancellation that are properly allocated to the cancelled item(s).

LIMITATION OF LIABILITY: Neither party will be liable to the other for any delay or failure in performance arising directly out of war, sabotage, insurrection, riot, and any other act of civil disobedience, act of public enemy, fire, explosion, flood, storm, or other act of God or nature, or similar cause beyond its reasonable control, including shortage or unavailability of labor or materials. If, notwithstanding the foregoing limitations, ASSA ABLOY Electronic Security Hardware has any liability to the purchaser, the purchaser agrees that the total liability to the purchaser for all losses, damages, and causes of action, whether in contract, equity, tort (including without limitation, negligence and gross negligence), or otherwise, will not exceed the amount the purchaser paid to ASSA ABLOY Electronic Security Hardware for the products (including, without limitation, incidental or consequential damages, damages for lost profits or business interruption, and punitive damages).

NO THIRD PARTY LIABILITY: If the purchaser uses the ASSA ABLOY Electronic Security Hardware Products on behalf of others or provides to others any products referenced herein, the ASSA ABLOY Electronic Security Hardware Parties shall have no liability to such persons whatsoever, and the purchaser agree to defend and indemnify the ASSA ABLOY Electronic Security Hardware Parties from any and all claims and demands asserted against them, and from any legal fees, costs and other expenses that the ASSA ABLOY Electronic Security Hardware Parties incur therewith.

Customers purchasing from Door Security Solutions Canada can find Canadian terms and conditions at www.assaabloy.ca/terms



The ASSA ABLOY Group is the global leader in access solutions. Every day, we help billions of people experience a more open world.

ASSA ABLOY Opening Solutions leads the development within door openings and products for access solutions in homes, businesses and institutions. Our offering includes doors, frames, door and window hardware, locks, perimeter fencing, access control and service.

ASSA ABLOY
Opening Solutions

ELECTRONIC SECURITY HARDWARE

HES | Securitron

USA

800 626 7590 | f. 866 582 4641 | assaabloyesh.com
customerservice.esh@assaabloy.com
techsupport.esh@assaabloy.com
orders.esh@assaabloy.com

CANADA

800 461 3007 | f. 800 461 8989 | assaabloydss.ca
sales.dss.ca@assaabloy.com
orders.dss.ca@assaabloy.com

Patent pending and/or patent www.assaabloydss.com/patents

Copyright © 2019, Hanchett Entry Systems, Inc., an ASSA ABLOY Group company. All rights reserved. Reproduction in whole or in part without the express written permission of Hanchett Entry Systems, Inc. is prohibited. ESH-60-1019